

Bowman Plaza I & II

Casi Runnells, CCIM, RPA
+1 501 850 0713
casi.runnells@ar.colliers.com

Justin Bentley, CCIM, SIOR
+1 501 850 0739
justin.bentley@ar.colliers.com

1 Allied Drive, Suite 1500
Little Rock, AR 72202
P: +1 501 372 6161
F: +1 501 372 0671
colliers.com/arkansas

Copyright © 2024 Colliers International.
Information herein has been obtained from
sources deemed reliable, however its accuracy
cannot be guaranteed. The user is required
to conduct their own due diligence and
verification.

4700 S Bowman Road & 12120 Colonel Glenn Road, Little Rock, AR Office & Flex Space for Lease

- Available suites: 2,144 - 11,020 SF
- Lease rate: \$9.00 - \$12.50/SF, NNN
- CAM: \$2.00/SF
- Easy access to I-430
- 24' clear height
- Fully sprinkled
- Rear loading
- Zoning: "POD," Planned Office District
- Desirable west Little Rock location

For Lease

Colliers

Available Suites

Bowman Plaza I Suite 900 (office)	4,300 SF	\$12.50/SF, NNN	Bowman Plaza II Suite 6400 (office)	3,000 SF	\$12.50/SF, NNN
Bowman Plaza I Suite 1000B	11,020 SF	\$9.00/SF, NNN	Bowman Plaza II Suite 6600 (office)	2,144 SF	\$12.50/SF, NNN

Suites may be combined for a total of 5,144 SF

Neighborhood Aerial



CONTACT US

Casi Runnells, CCIM, RPA

+1 501 850 0713

casi.runnells@ar.colliers.com

Justin Bentley, CCIM, SIOR

+1 501 850 0739

justin.bentley@ar.colliers.com

Colliers | AR

1 Allied Drive, Suite 1500

Little Rock, AR 72202

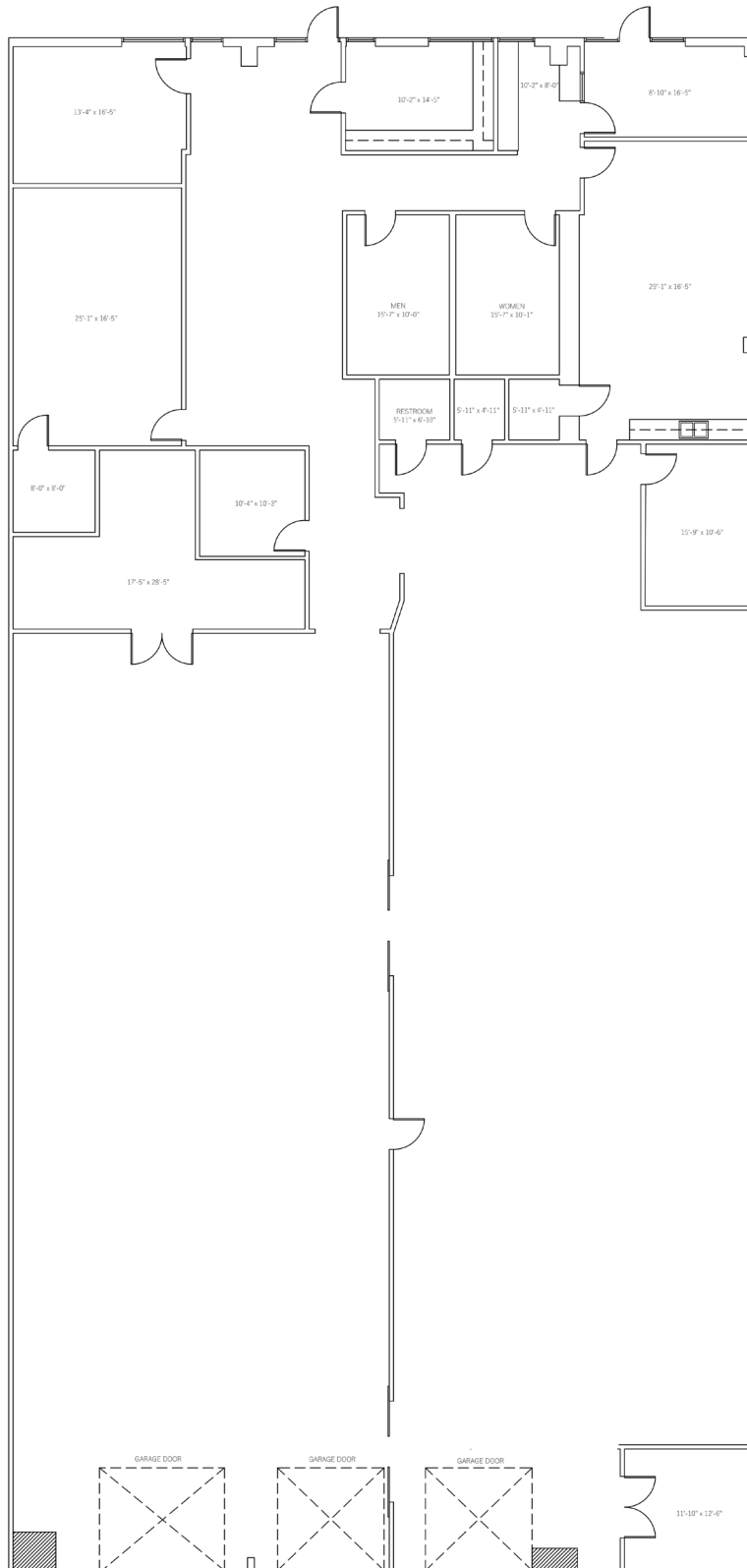
P: +1 501 372 6161

F: +1 501 372 0671

Bowman Plaza | Floor Plans



Suite 1000B: 11,020 SF



CONTACT US

Casi Runnells, CCIM, RPA

+1 501 850 0713

casi.runnells@ar.colliers.com

Justin Bentley, CCIM, SIOR

+1 501 850 0739

justin.bentley@ar.colliers.com

Colliers | AR

1 Allied Drive, Suite 1500

Little Rock, AR 72202

P: +1 501 372 6161

F: +1 501 372 0671

This document/email has been prepared by Colliers for advertising and general information only. Colliers makes no guarantees, representations or warranties of any kind, expressed or implied, regarding the information including, but not limited to, warranties of content, accuracy and reliability. Any interested party should undertake their own inquiries as to the accuracy of the information. Colliers excludes unequivocally all inferred or implied terms, conditions and warranties arising out of this document and excludes all liability for loss and damages arising there from. This publication is the copyrighted property of Colliers and /or its licensor(s). © 2025. All rights reserved. This communication is not intended to cause or induce breach of an existing listing agreement. Colliers International Group Inc.

Bowman Plaza I
Suite 900: 4,300 SF

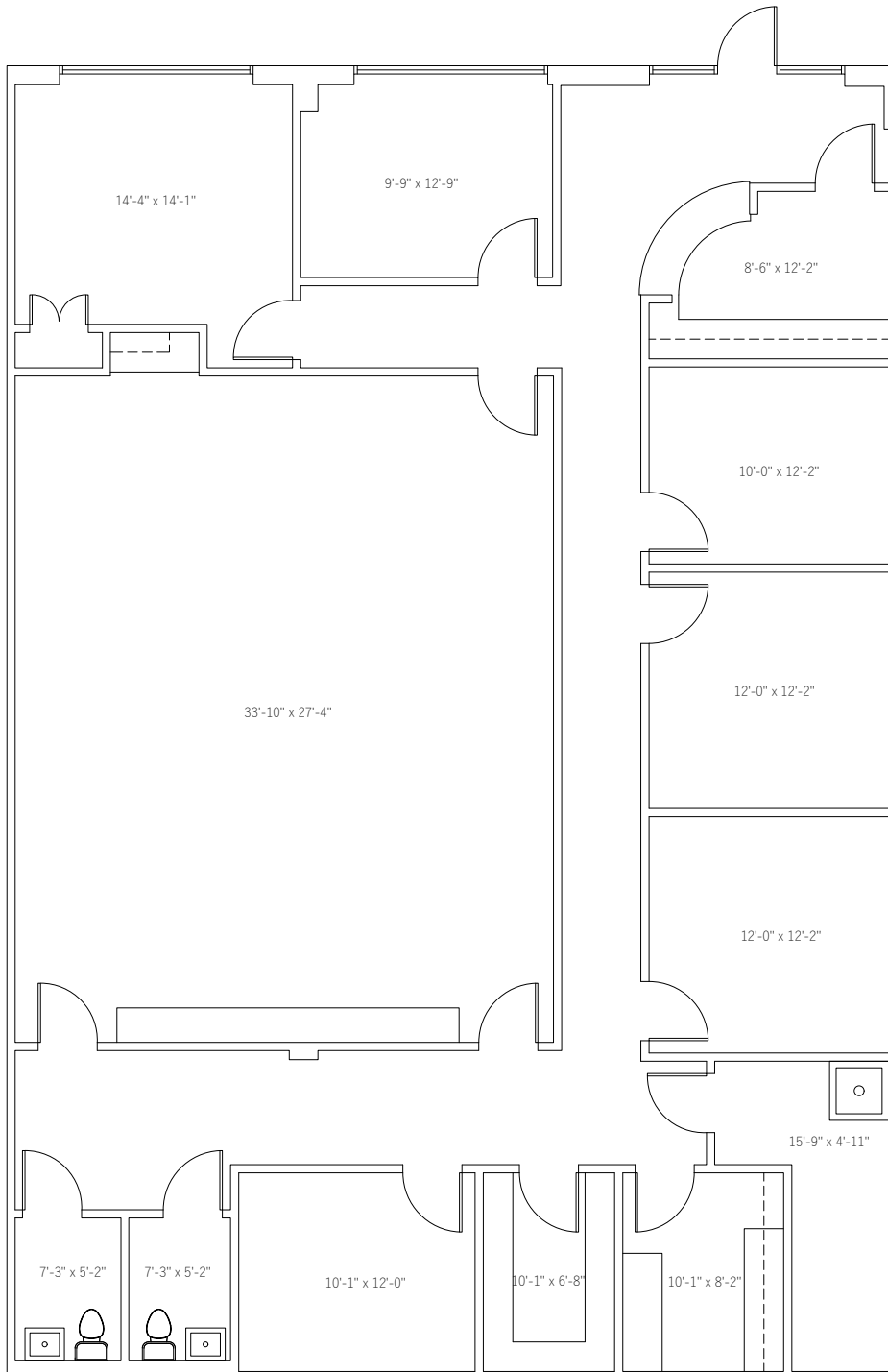


Bowman Plaza II Floor Plans



Suite 6400: 3,000 SF

Suites 6400 & 6600 may be combined for 5,114 SF



CONTACT US

Casi Runnells, CCIM, RPA

+1 501 850 0713

casi.runnells@ar.colliers.com

Justin Bentley, CCIM, SIOR

+1 501 850 0739

justin.bentley@ar.colliers.com

Colliers | AR

1 Allied Drive, Suite 1500

Little Rock, AR 72202

P: +1 501 372 6161

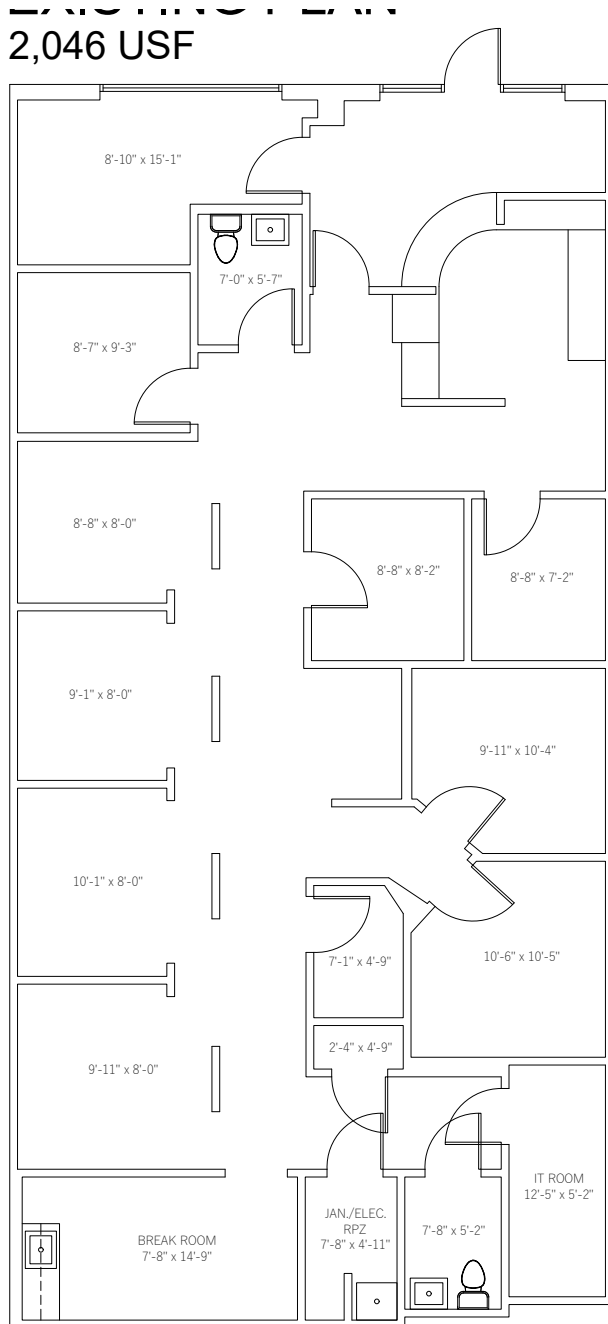
F: +1 501 372 0671

This document/email has been prepared by Colliers for advertising and general information only. Colliers makes no guarantees, representations or warranties of any kind, expressed or implied, regarding the information including, but not limited to, warranties of content, accuracy and reliability. Any interested party should undertake their own inquiries as to the accuracy of the information. Colliers excludes unequivocally all inferred or implied terms, conditions and warranties arising out of this document and excludes all liability for loss and damages arising there from. This publication is the copyrighted property of Colliers and /or its licensor(s). © 2025. All rights reserved. This communication is not intended to cause or induce breach of an existing listing agreement. Colliers International Group Inc.

Bowman Plaza II Floor Plans

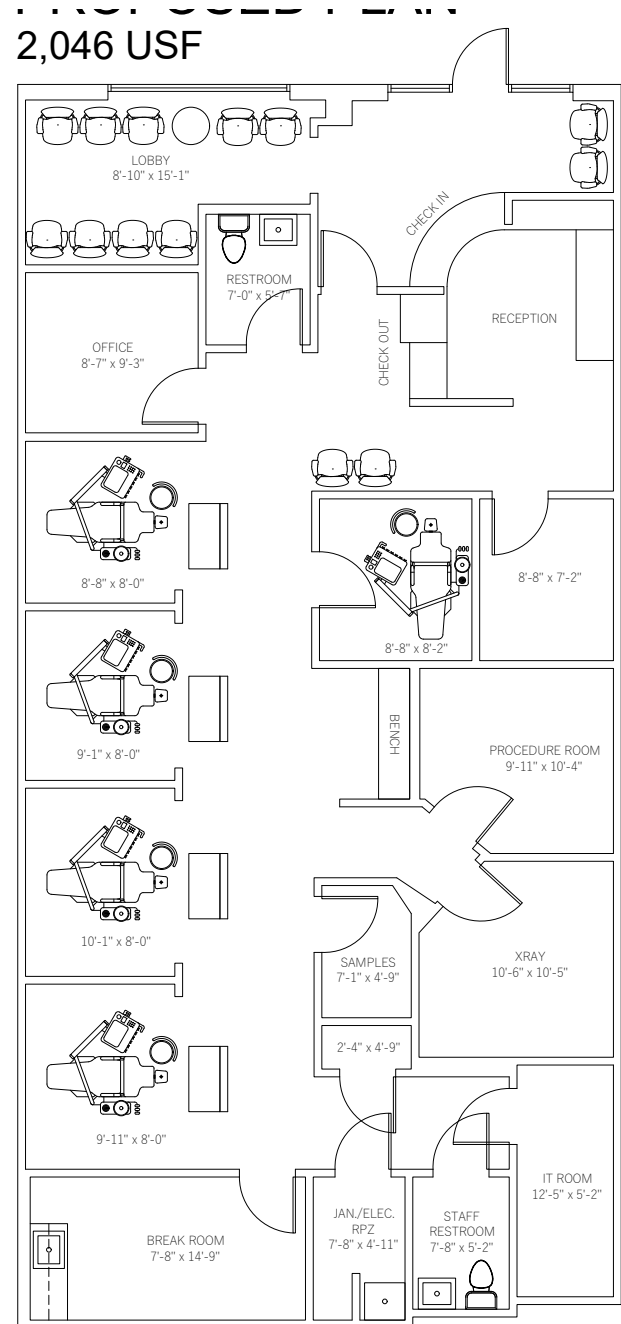
Suite 6600: 2,114 SF

Existing floor plan



Suite 6600: 2,114 SF

Proposed floor plan



CONTACT US

Casi Runnells, CCIM, RPA
+1 501 850 0713
casi.runnells@ar.colliers.com

Justin Bentley, CCIM, SIOR
+1 501 850 0739
justin.bentley@ar.colliers.com

Colliers | AR
1 Allied Drive, Suite 1500
Little Rock, AR 72202
P: +1 501 372 6161
F: +1 501 372 0671