

FOR SALE

8826 WASHINGTON BLVD., JESSUP, MD 20794



Land for Sale

John Sindler

410.260.6538

jsindler@hyattcommercial.com

PROPERTY DESCRIPTION

±6,000 SF office building situated on ±2.03ac of land located on highly traveled Washington Blvd.

HIGHLIGHTS

- Concept Plans In-hand for Hotel development
- (1 mile to National Bus Pk 1.5 to Ft Meade/NSA)
- Ideal Re-development oppty on Busy Rt 1 Corridor
- Visible to Rt 32

OFFERING



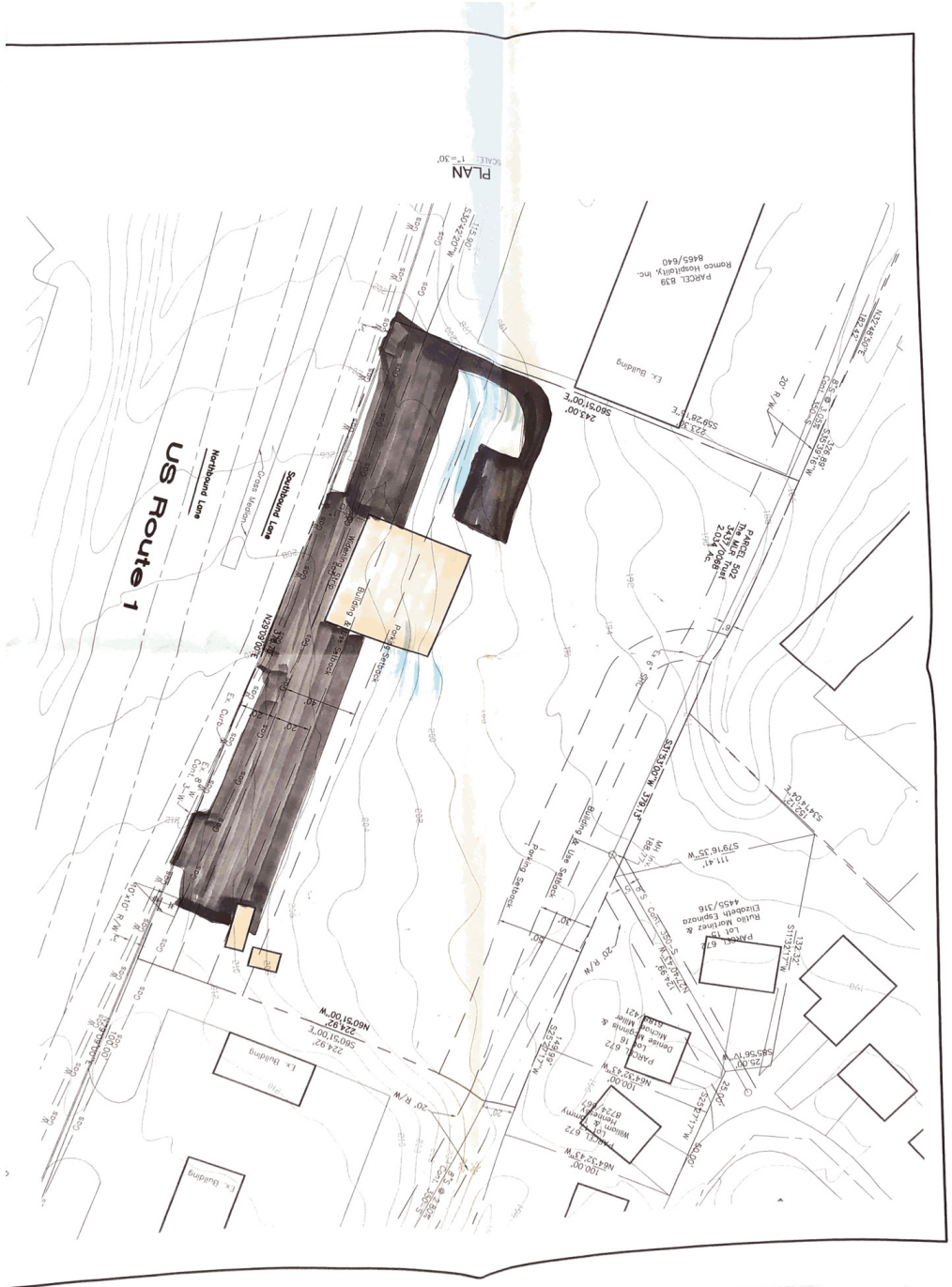
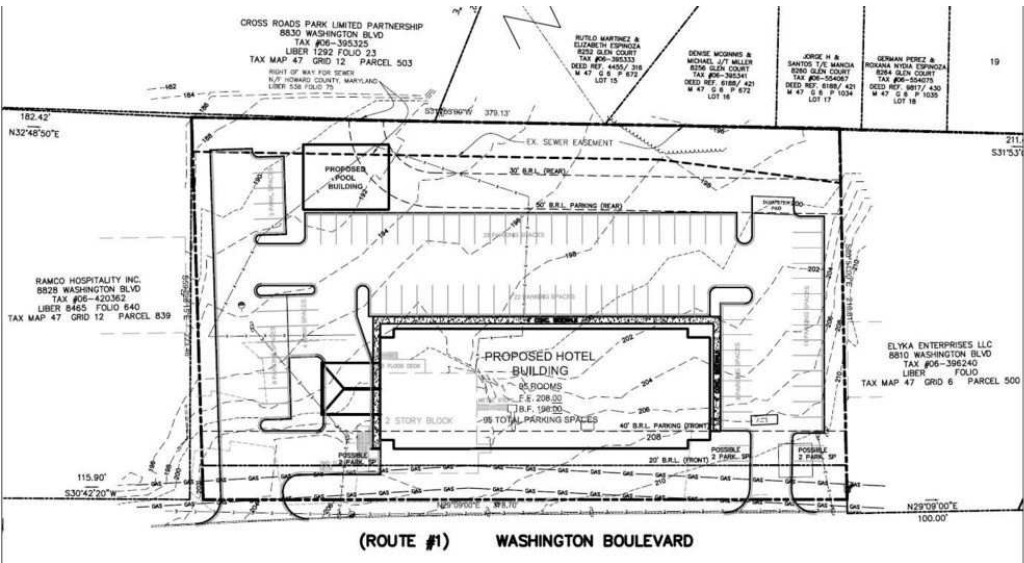
FOR SALE

LAND FOR SALE

Building Size	6,000 SF
Price	Subject To Offer



FLOOR PLANS



DEMOGRAPHICS

2023 SUMMARY

	1 MILE	5 MILES	10 MILES
Population	3,644	175,519	558,747
Households	1,374	63,133	203,489
Average Household Size	2.7	2.8	2.7
Average Age	33.1	33.9	35.9
Average Household Income	\$97,986	\$97,309	\$105,536



558,747

Population



2.7

Average HH Size



35.9

Average Age



\$105,536

Average HH Income



CONTACT

HYATT COMMERCIAL

410.266.8800

2568A Riva Rd, Suite 300, Annapolis, MD 21401

John Sindler

410.260.6538

jsindler@hyattcommercial.com

While we have no reason to doubt the accuracy of any of the information supplied, we cannot, and do not, guarantee its accuracy. All information should be independently verified prior to a purchase or lease of the property. We are not responsible for errors, omissions, misuse, or misinterpretation contained herein and make no warranty of any kind, express or implied, with respect to the property or any other matters. The property is subject to price change or withdrawal without notice.