

SFrealstate.com

SALES · LEASING · CONSULTING · MANAGEMENT

Jay Pon

415.409.8858  
jpon@jps.net

Mark McNee

415.967.2637  
mark@mcnee.net



# For Lease

Van Ness Corridor

Office

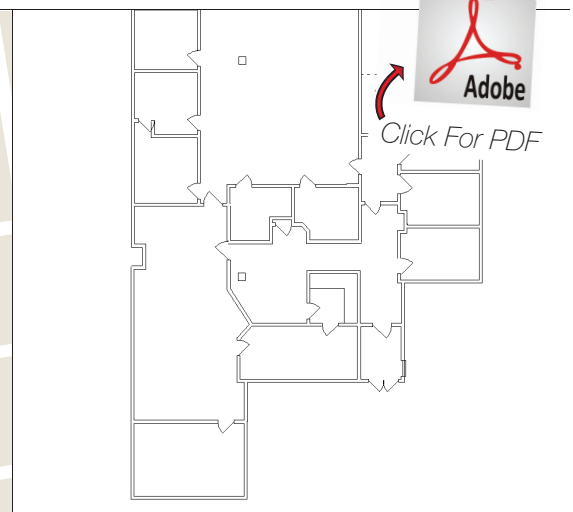
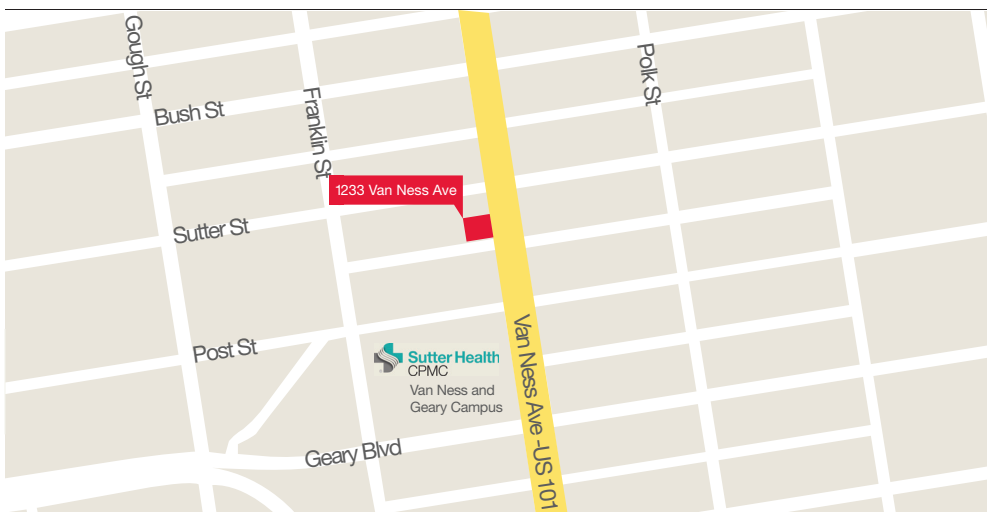
1233 Van Ness Avenue, San Francisco, CA 

Second Floor ± 6,000 ft<sup>2</sup> per owner

- Professional office space with 7 private offices; 2 conference rooms
- Elevator; three bathrooms; Full floor identity; Reception area
- Fronts Van Ness Avenue / US Highway 101
- Walking distance to Civic Center and public transportation
- Excellent opportunity for Van Ness signage presence

Term: 5-10 years

Price: \$14,995 per month, industrial gross



The information contained herein has been obtained from sources we deem reliable but is not guaranteed. Prospective tenants are advised to independently verify accuracy and to review any disclosure information on file with this office. This property statement is dated July 25, 2016 and replaces any previously dated or undated version. Information on this statement changes periodically; Prospective tenants are advised to contact our office to ensure they have the most current property statement. \*Data from San Francisco Planning Department; Square footage references should be verified by tenant using qualified professionals. To be removed from our distribution list call 415.967.2637. CA BRE License Information: Jay Pon #01203843; Mark McNee #01464307; SFrealstate.com #02006673.

SFrealstate.com

SALES · LEASING · CONSULTING · MANAGEMENT