



East End Retail

- 1 Giant Eagle Market District
- 2 Aldi - 2 Locations
- 3 Whole Foods
- 4 Fresh Market
- 5 Walgreens
- 6 Trader Joe's
- 7 Target
- 8 CVS
- 9 The Home Depot
- 10 Palm Palm
- 11 PetSmart
- 12 Panera Bread
- 13 The Village at Eastside
- 14 Bakery Square
- 15 Walnut Street Retail
- 16 The Junction of Bloomfield

East End Residential

- 1 Baumhaus Apartments
132 Residential Units
- 2 Industry Pittsburgh
161 Residential Units
- 3 Eastside III
364 Residential Units
- 4 Albion at Morrow Park
213 Residential Units
- 5 CODA on Centre
175 Residential Units
- 6 Walnut on Highland
194 Residential Units

East End Hospitality

- 1 HYATT House - 128 Rooms
- 2 Hotel Indigo Pittsburgh - 136 Rooms
- 3 The Maverick by Kasa - 63 Rooms

East End Health Care

- 1 UPMC Shadyside Hospital
- 2 Hillman Cancer Center
- 3 West Penn Hospital
- 4 UPMC Children's Hospital

OXFORD
REALTY SERVICES, INC.

2865 Railroad Street, Suite 202
Pittsburgh, PA 15222
www.oxfordrealtyservices.com

For more information please contact:

Arthur J. DiDonato, Jr.
Senior Vice President - Retail Brokerage
Oxford Realty Services, Inc.
412.261.0200, ext 3436
adidonato@oxfordrealtyservices.com

Alec M. Parchinski
Associate
Oxford Realty Services, Inc.
412.261.0200, ext 3485
aparchinski@oxfordrealtyservices.com

Although all information furnished regarding property for sale, rental or financing is from sources deemed reliable, such information has not been verified, and no express representation is made nor is any to be implied as to the accuracy thereof, and it is submitted subject to errors, omissions, change of price, rental or other conditions, prior sale, lease or financing, or withdrawal without notice. Rental terms and all dimensions are approximate and specifications are subject to change without notice. Oxford Realty Services, Inc., an independent real estate services company.

OXFORD
REALTY SERVICES, INC.

Real Estate Brokerage Services

Office | Industrial | Retail | Investing | Consulting

5401 Baum Boulevard
Pittsburgh, PA 15232



Site Size

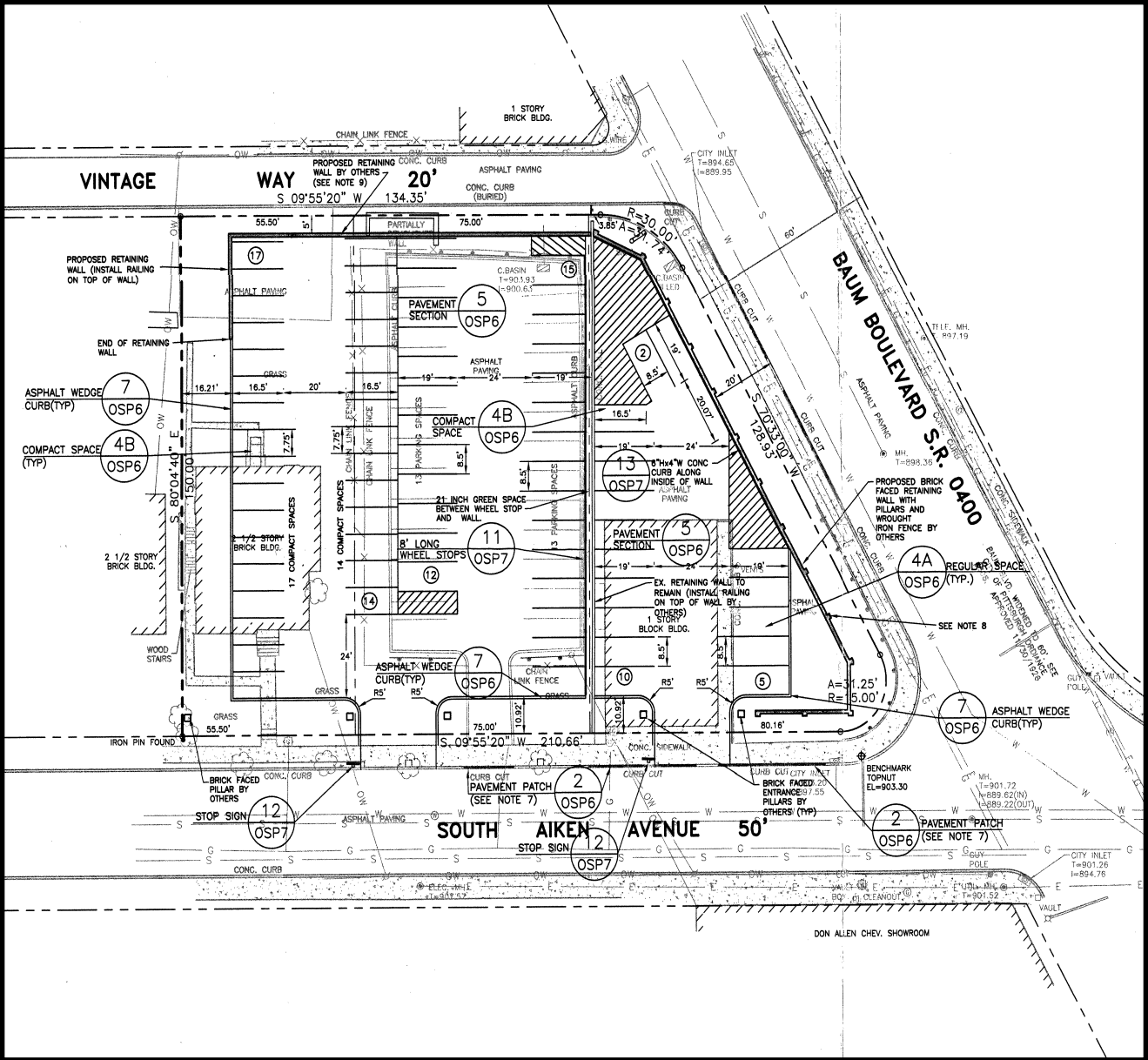
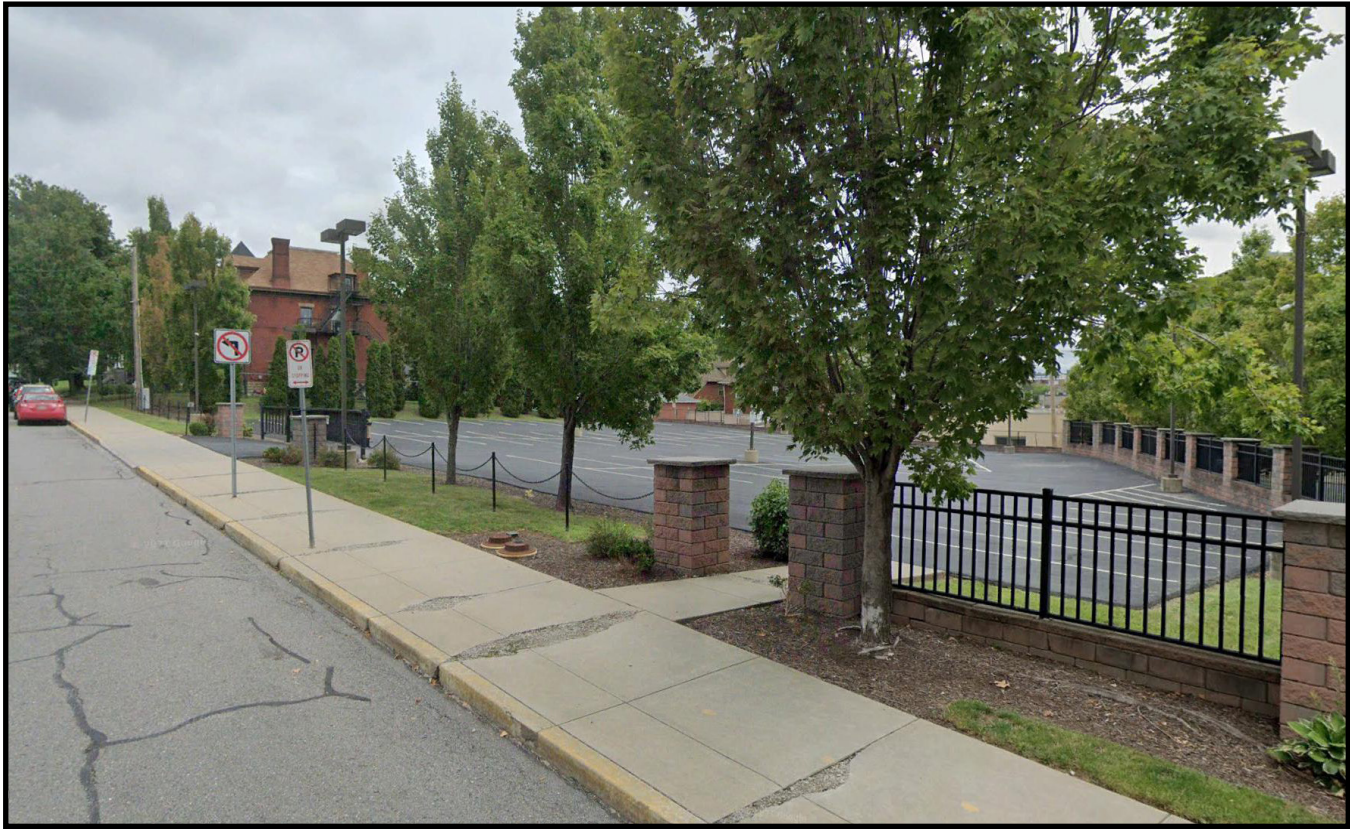
Appox. 27,500 SF or 0.63 Acres

Parcel ID

51-L-190
51-L-194
51-L-198
(Allegheny County)

Property Highlights

- Located at the signalized intersection of Baum Boulevard and South Aiken Avenue, the property is currently operating as a parking lot and is fully improved with utilities and paving, ready for further building improvements and development.
- The area has experienced monumental economic growth over the past decade including the new Junction of Bloomfield retail complex.
- UPMC Shadyside Hospital is located 2 blocks away, along with The Hillman Cancer Center and minutes from the Children's Hospital and West Penn Hospital. Also in close proximity to the hotel is the University of Pittsburgh and Carnegie Mellon University.



	DEMOGRAPHICS		
	1-MILE	3-MILE	5-MILE
Population	39,376	174,876	333,802
Avg HH Income	\$77,125	\$79,594	\$77,929