



**BERKSHIRE HATHAWAY**  
HomeServices  
Hudson Valley Properties  
COMMERCIAL DIVISION

**Walt Finnerman**  
Director, Commercial-Investment Properties

892 Main Street, Fishkill, NY 12524  
o & m: 845.705.0994 | f: 845.896.6337  
wfinnerman@bhhshudsonvalley.com



## **FOR SALE: 4.4 COMMERCIAL ACRES**

### **STRATEGIC RT. 9D & NEAR RT. 9 - DEVELOPMENT SITE**

#### **TRAFFIC SIGNAL ACCESS / SEWER & WATER/ T. OF POUGHKEEPSIE**

**( IDEAL FOR CARWASH-LAUNDROMAT, SELF STORAGE, RESTAURANT, OFFICES, SHOWROOM-WAREHOUSE, RETAIL)**

<b>Location:</b>	<b>Near the strategic intersection of Rt. 9, Rt. 9D &amp; Vassar Road. Town of Poughkeepsie. Located next to Staples, and the side entrance to the Shoppes of South Hills with tenants such as Bob's Furniture, Ashley Furniture, Shoprite, Burlington, Hobby Lobby. Very close to the Village of Wappingers Falls border.</b>
<b>Property Size:</b>	<b>4.4 level acres</b>
<b>Frontage:</b>	<b>Rt. 9D: 350 ft.</b>
<b>Zoned:</b>	<b>BH ( Highway Business)</b>
<b>Permits:</b>	<b>(may be subject to either use permit or site plan or both) banks, retail, offices, material sales, restaurant, hotel, laundromat, motor vehicles sales &amp; service, nurseries-garden center, veterinary office, day care, kennels, warehouse/ storage buildings.</b>
<b>Traffic Signal Access;</b>	<b>Located at the side entrance( 9 Rt. 9D) of the Shoppes at South Hills. Subject property's northern border is directly across the street, in line with signal.</b>
<b>Utilities:</b>	<b>Town water &amp; sewer</b>
<b>Traffic Count:</b>	<b>Rt. 9D: 13,179 cars per day</b>
<b>Pop. Density:</b>	<b>1 mile; 5,917                      3 miles: 29,862</b>
<b>Taxes:</b>	<b>\$8.800</b>
<b>Offering Price;</b>	<b>\$1,150,000</b>

More info:

Contact either: [Walt@ Berkshire Hathaway \(845\) 705-0994](mailto:Walt@BerkshireHathaway.com)  
[wfinnerman@bhhshudsonvalley.com](mailto:wfinnerman@bhhshudsonvalley.com)

Or

[Brian Mossey@ Berkshire Hathaway \(845\) 288-4367](mailto:BrianMossey@BerkshireHathaway.com)  
[bmossey@bhhshudsonvalley.com](mailto:bmossey@bhhshudsonvalley.com)





9D

Site

proposed area  
for development

2-STORY  
OFFICE BUILDING  
4,500 SF/TLR

STAPLES

FAST SIGNS  
Sign & Graphic Solutions Made Simple.

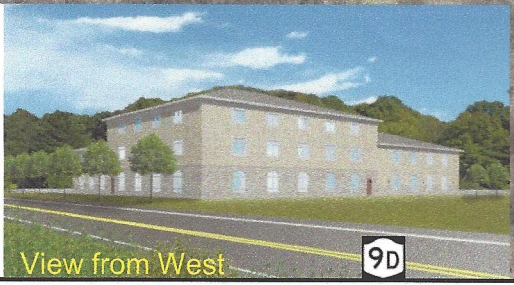
verizon

SHERWIN  
WILLIAMS

enterprise

THE  
**Chazen**  
COMPANIES  
*Proud to be Employee Owned*

Engineers  
Land Surveyors  
Planners  
Environmental Professionals  
Landscape Architects



View from West

9D

Robert Buyakowski  
845-489-5079

Prime 4.4 commercial development site  
Traffic signal corner, just off Rt. 9

Features:

- Prime location on Rt. 9D in the Town of Poughkeepsie, near Wappingers Falls Village
- Level site
- Town water, sewer, natural gas
- Shares traffic signal with Shoppes at South Hills
- High traffic count & high population density
- Many uses allowed in BH zoning



**Socket Spring Park  
Rt. 9D  
Town of Poughkeepsie  
4.4 acres-Zoned BH**



200 ft