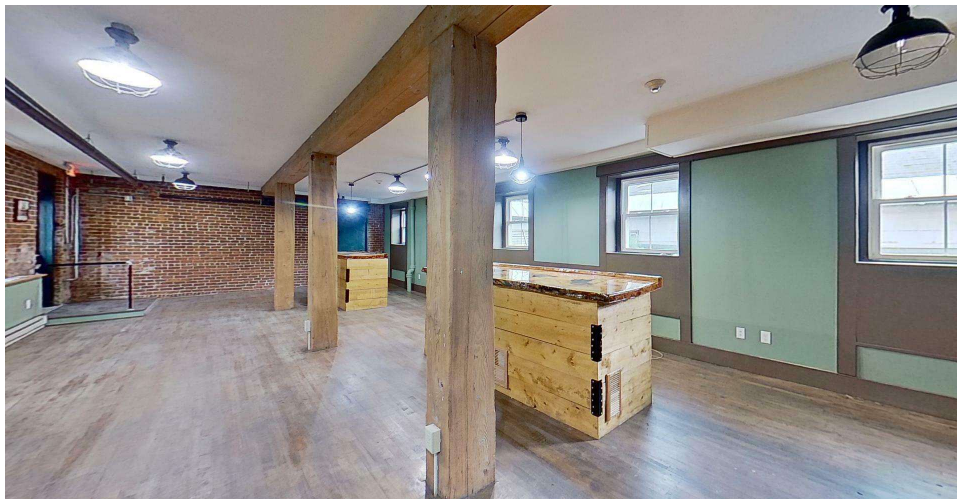


COFFEE SHOP/CAFE SPACE FOR LEASE IN ANTRIM, NH



COFFEE SHOP/CAFE SPACE FOR LEASE IN ANTRIM, NH

42 Main St, Antrim, NH 03440



PROPERTY DESCRIPTION

Located at 42 Main St, Antrim, NH, this 2,300 Sq.ft commercial space offers excellent visibility on the busiest street in town, with ample nearby parking for easy access. This prime location is home to several other businesses, driving more foot traffic to your doorstep—perfect for attracting new customers.

Best suited for a cafe, restaurant, or any retail operation, the space is equipped with water lines and communication setups, ideal for a bar or coffee shop. The layout features two spacious seating areas, two bathrooms, and additional rooms for storage and equipment, providing all the essentials for smooth operations.

Take advantage of the high visibility, bustling street traffic, and the support of neighboring businesses to help your business grow and thrive in Antrim's vibrant community.

PROPERTY HIGHLIGHTS

- TWO BATHROOMS INSIDE THE UNIT
- HIGH VISIBILITY, NUMEROUS BUSINESSES NEARBY
- RECENTLY RENOVATED SPACE

OFFERING SUMMARY

Lease Rate:	\$2,500.00 / Month (Gross)
Number of Units:	1
Available SF:	2,300 SF

We obtained the information above from sources we believe to be reliable. However, we have not verified its accuracy and make no guarantee, warranty or representation about it. It is submitted subject to the possibility of errors, omissions, change of price, rental or other conditions, prior sale, lease or financing, or withdrawal without notice. We include projections, opinions, assumptions or estimates for example only, and they may not represent current or future performance of the property. You and your tax and legal advisors should conduct your own investigation of the property and transaction.

VIKTORIA ALKOVA
Commercial Real Estate Agent, MiCP
O: 603.610.8500
C: 646.577.1194
viktorija@kwclcg.com
NH #074657

DAVE GARVEY
Managing Director
O: 603.610.8523
C: 603.491.2854
davegarvey@kwcommercial.com
NH #004637

ETHAN ASH
Commercial & Investment Specialist, MiCP
O: +16036108500 X1430
C: 603.707.2319
ethan.ash@kw.com
NH #071469

LISA ALKOVA
Commercial Specialist
O: 508.308.5617
C:
lisa@kwclcg.com
NH #081274

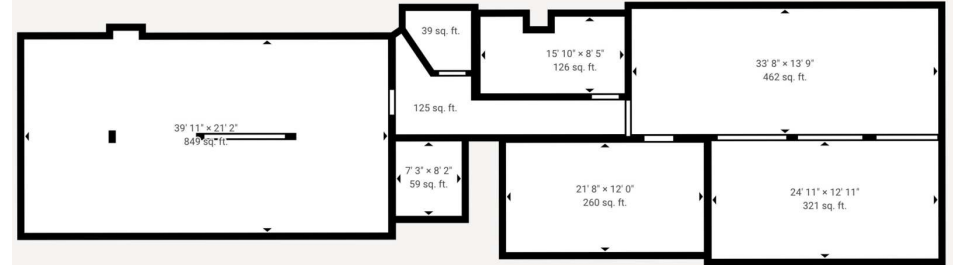
KELLER WILLIAMS COASTAL REALTY
603.610.8500
750 Lafayette Rd.
Suite 201 - Coastal Land & Commercial Group
Portsmouth, NH 03801

Each Office Independently Owned and Operated kwclcg.com

COFFEE SHOP/CAFE SPACE FOR LEASE IN ANTRIM, NH

OPEN LAYOUT - SUITABLE FOR VARIOUS USES

42 Main St, Antrim, NH 03440



We obtained the information above from sources we believe to be reliable. However, we have not verified its accuracy and make no guarantee, warranty or representation about it. It is submitted subject to the possibility of errors, omissions, change of price, rental or other conditions, prior sale, lease or financing, or withdrawal without notice. We include projections, opinions, assumptions or estimates for example only, and they may not represent current or future performance of the property. You and your tax and legal advisors should conduct your own investigation of the property and transaction.

VIKTORIA ALKOVA
Commercial Real Estate Agent, MiCP
O: 603.610.8500
C: 646.577.1194
viktorija@kwclcg.com
NH #074657

DAVE GARVEY
Managing Director
O: 603.610.8523
C: 603.491.2854
davegarvey@kwcommercial.com
NH #004637

ETHAN ASH
Commercial & Investment Specialist, MiCP
O: +16036108500 X1430
C: 603.707.2319
ethan.ash@kw.com
NH #071469

LISA ALKOVA
Commercial Specialist
O: 508.308.5617
C:
lisa@kwclcg.com
NH #081274

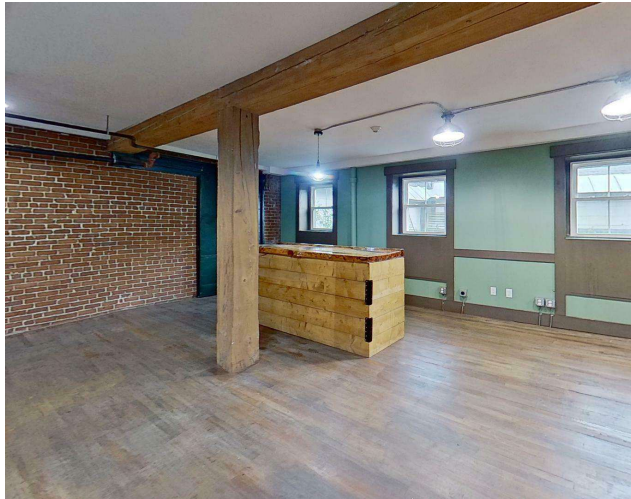
KELLER WILLIAMS COASTAL REALTY
603.610.8500
750 Lafayette Rd.
Suite 201 - Coastal Land & Commercial Group
Portsmouth, NH 03801

Each Office Independently Owned and Operated kwclcg.com

COFFEE SHOP/CAFE SPACE FOR LEASE IN ANTRIM, NH

FINISHED SPACE AND 2 BATHROOMS INSIDE

42 Main St, Antrim, NH 03440



We obtained the information above from sources we believe to be reliable. However, we have not verified its accuracy and make no guarantee, warranty or representation about it. It is submitted subject to the possibility of errors, omissions, change of price, rental or other conditions, prior sale, lease or financing, or withdrawal without notice. We include projections, opinions, assumptions or estimates for example only, and they may not represent current or future performance of the property. You and your tax and legal advisors should conduct your own investigation of the property and transaction.

VIKTORIA ALKOVA
Commercial Real Estate Agent, MiCP
O: 603.610.8500
C: 646.577.1194
viktorija@kwclcg.com
NH #074657

DAVE GARVEY
Managing Director
O: 603.610.8523
C: 603.491.2854
davegarvey@kwcommercial.com
NH #004637

ETHAN ASH
Commercial & Investment Specialist, MiCP
O: +16036108500 X1430
C: 603.707.2319
ethan.ash@kw.com
NH #071469

LISA ALKOVA
Commercial Specialist
O: 508.308.5617
C:
lisa@kwclcg.com
NH #081274

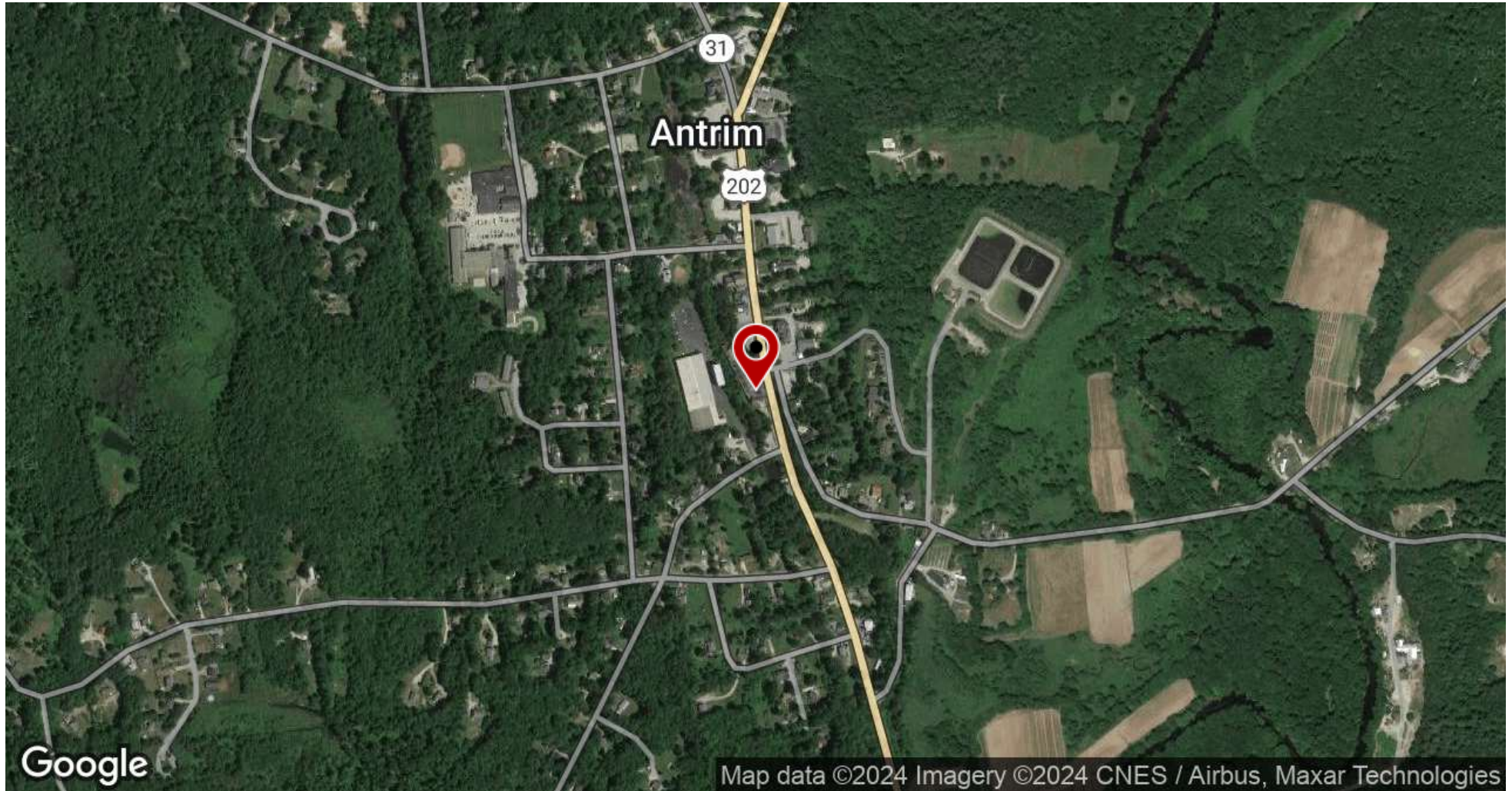
KELLER WILLIAMS COASTAL REALTY
603.610.8500
750 Lafayette Rd.
Suite 201 - Coastal Land & Commercial Group
Portsmouth, NH 03801

Each Office Independently Owned and Operated kwclcg.com

COFFEE SHOP/CAFE SPACE FOR LEASE IN ANTRIM, NH

PROMINENT LOCATION ON A HIGH-TRAFFIC STREET

42 Main St, Antrim, NH 03440



We obtained the information above from sources we believe to be reliable. However, we have not verified its accuracy and make no guarantee, warranty or representation about it. It is submitted subject to the possibility of errors, omissions, change of price, rental or other conditions, prior sale, lease or financing, or withdrawal without notice. We include projections, opinions, assumptions or estimates for example only, and they may not represent current or future performance of the property. You and your tax and legal advisors should conduct your own investigation of the property and transaction.

VIKTORIA ALKOVA
Commercial Real Estate Agent, MiCP
O: 603.610.8500
C: 646.577.1194
viktorija@kwclcg.com
NH #074657

DAVE GARVEY
Managing Director
O: 603.610.8523
C: 603.491.2854
davegarvey@kwcommercial.com
NH #004637

ETHAN ASH
Commercial & Investment Specialist, MiCP
O: +16036108500 X1430
C: 603.707.2319
ethan.ash@kw.com
NH #071469

LISA ALKOVA
Commercial Specialist
O: 508.308.5617
C:
lisa@kwclcg.com
NH #081274

KELLER WILLIAMS COASTAL REALTY
603.610.8500
750 Lafayette Rd.
Suite 201 - Coastal Land & Commercial Group
Portsmouth, NH 03801

Each Office Independently Owned and Operated kwclcg.com

Population Trends

42 Main St, Antrim, New Hampshire, 03440 2 (30 minutes)

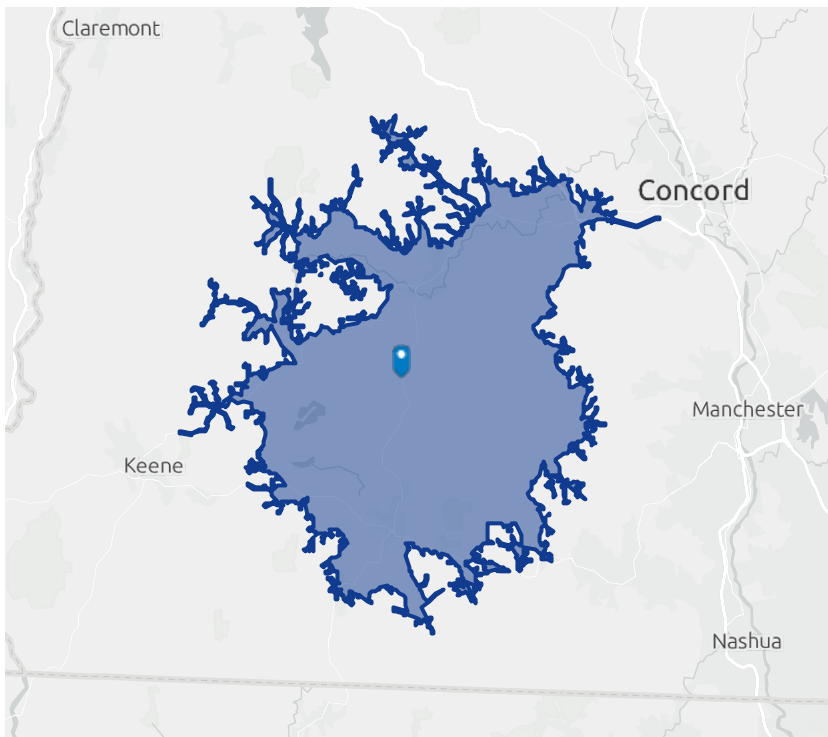
42 Main St, Antrim, New Hampshire, 03440

Drive time of 30 minutes

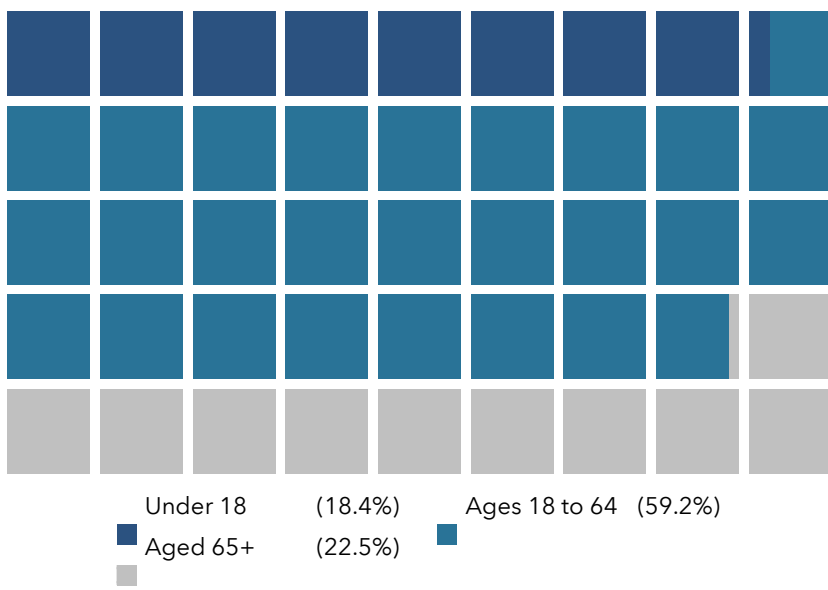
Prepared by Esri and Lisa Alkova

Latitude: 43.02746

Longitude: -71.93813



POPULATION BY AGE

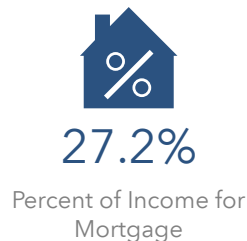


Population Trends and Key Indicators

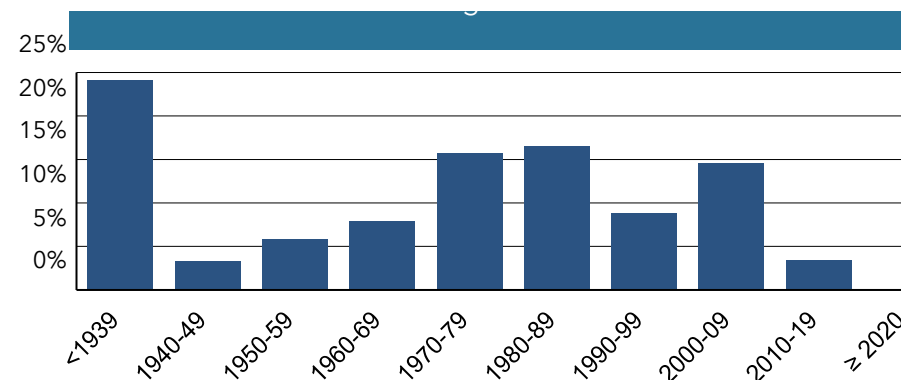
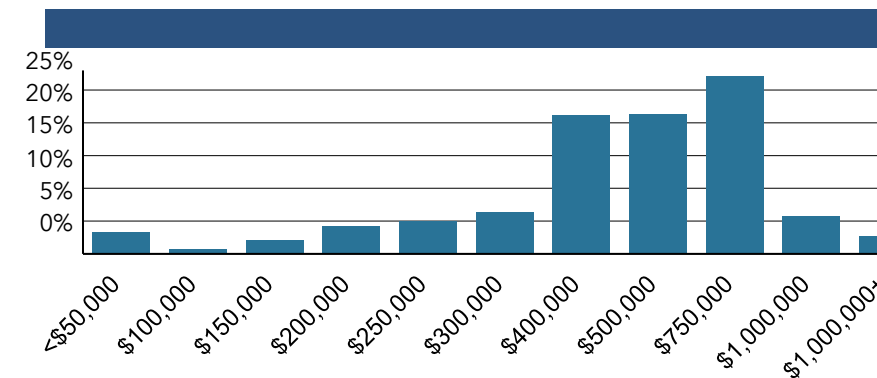
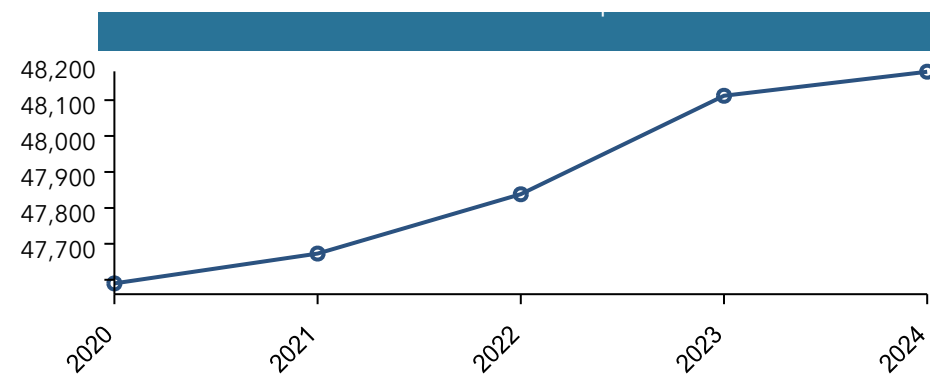
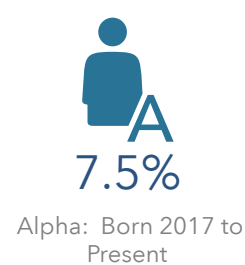
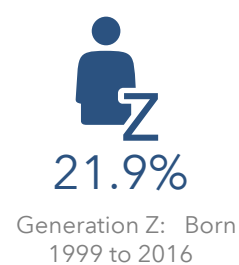
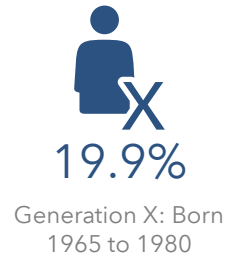
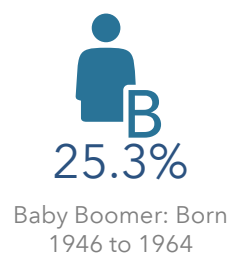
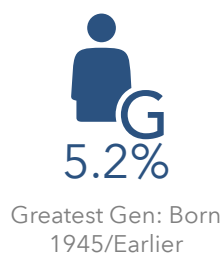
42 Main St, Antrim, New Hampshire, 03440 2
Drive time of 30 minutes

48,279	18,971	2.42	44.3	\$100,209	\$435,541	153	79	22
Population	Households	Avg Size Household	Median Age	Median Household Income	Median Home Value	Wealth Index	Housing Affordability	Diversity Index

MORTGAGE INDICATORS



POPULATION BY GENERATION



Source: This infographic contains data provided by Esri (2024, 2029), Esri-U.S. BLS (2024), ACS (2018-2022). © 2024 Esri



Commute Profile

42 Main St, Antrim, New Hampshire, 03440 (15 minutes)

42 Main St, Antrim, New Hampshire, 03440

Drive time of 15 minutes

Prepared by Esri and Lisa Alkova

Latitude: 43.02746

Longitude: -71.93813

COMMUTE PROFILE

42 Main St, Antrim, New Hampshire, 03440

Drive time of 15 minutes

This infographic provides information about how population age 16+ travels to work. This data comes from the American Community Survey (ACS) from the US Census Bureau. Read an in-depth analysis on the [ACS documentation page](#).

WORKERS



4,694

ACS Workers Age 16+



76.5%

Drove Alone to Work

TRANSPORTATION TO WORK



0.2%

Took Public Transportation



6.8%

Carpooled



2.3%

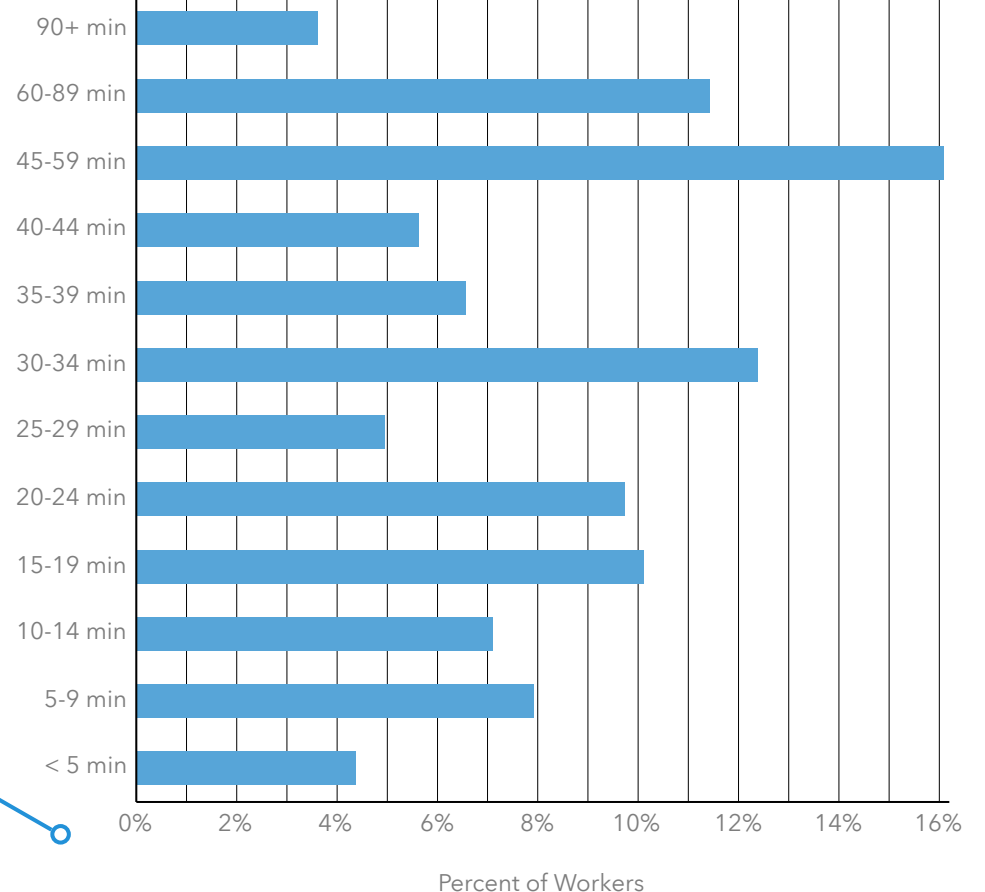
Walked to Work



0.9%

Bike to Work

TRAVEL TIME TO WORK



Eating Places

42 Main St, Antrim, New Hampshire, 03440 (10 minutes)

42 Main St, Antrim, New Hampshire, 03440

Drive time of 10 minutes

Prepared by Esri and Lisa Alkova

Latitude: 43.02746

Longitude: -71.93813

42 Main St, Antrim, New Hampshire, 03440

Drive time of 10 minutes



3

Bakers
(Retail)



1

Bars and
Pubs



3

Coffee
Shops



0

Juice
Bars



3

Doughnut
Shops



0

Ice Cream
Parlors



3

Pizza
Restaurants



15

Other
Restaurants

4,215

Population

1,664

Households

2.52

Avg Size
Household

45.5

Median
Age

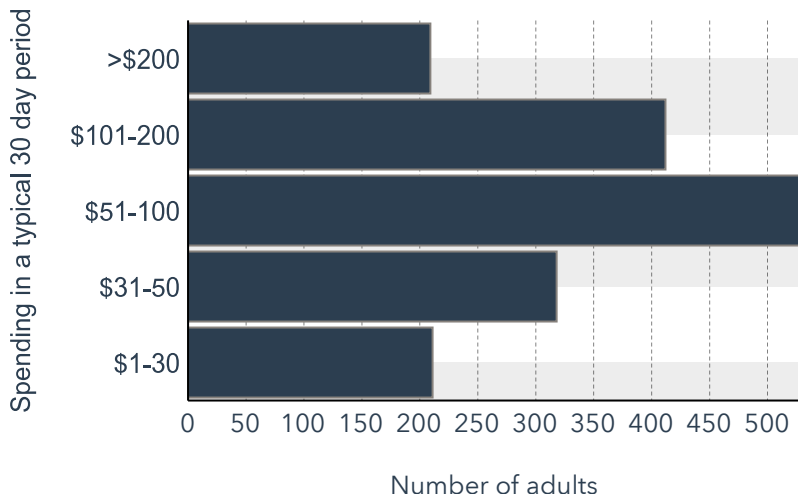
\$78,063

Median Household
Income

\$424,932

Median Home
Value

Family Restaurants Market Potential



Annual Household Spending

\$3,560

Meals at
Restaurants

\$775

Food & Drink
on Trips

Local Business Summary

159

Total
Businesses

1,183

Total
Employees

Source: This infographic contains data provided by Esri (2024, 2029), Esri-MRI-Simmons (2024), Esri-U.S. BLS (2024), Esri-Data Axle (2024). **Data Axle** POI data updated 3 times per year. * Indicates the number of locations has reached the maximum. Note that the BLS has redefined Meals at Restaurants/Other by removing the mealtime distinction: breakfast, lunch, dinner, and snacks. Where food purchases were made has been maintained. © 2024 Esri



Eating Places

42 Main St, Antrim, New Hampshire, 03440 (10 minutes)

42 Main St, Antrim, New Hampshire, 03440

Drive time of 10 minutes

Prepared by Esri and Lisa Alkova

Latitude: 43.02746

Longitude: -71.93813

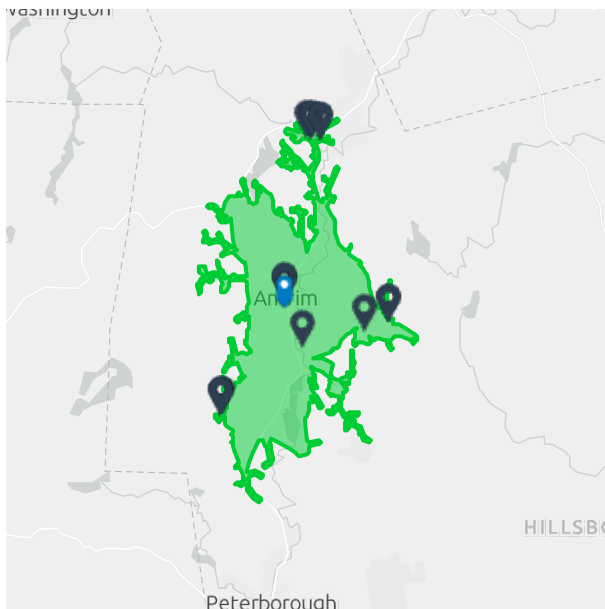
42 Main St, Antrim, New Hampshire, 03440

Drive time of 10 minutes



Company/Business Name	Street	City	State	Employees	Sales	Distance (mi)
Shop By Victoria Inc	St N Lealman	Antrim	NH	6	\$297,000	0.13
Rick & Diane's Brick Oven Pizzeria	Main St	Antrim	NH	6	\$297,000	0.14
Dunkin'	Concord Street # T-birdgas	Antrim	NH	17	\$1,001,000	0.25
Alberto's Italian Restaurant	Antrim Rd	Bennington	NH	30	\$1,483,000	1.60
Dog on the Run	Onset Rd	Bennington	NH	2	\$99,000	2.91
The Gibson Room at Crotched Mountain Golf Club	2nd Nh Tpke N	Francestown	NH	16	\$791,000	3.60
Toll Booth Tavern	2nd Nh Tpke N	Francestown	NH	10	\$495,000	3.60
Common Place Eatery	Main St	Hancock	NH	3	\$149,000	4.30
Hancock Inn	Main St	Hancock	NH	11	\$906,000	4.37
Fiddleheads Cafe and Catering	Main St	Hancock	NH	10	\$495,000	4.39
Subway	Antrim Rd	Hillsborough	NH	9	\$149,000	5.82
Dunkin'	W Main St	Hillsborough	NH	35	\$2,060,000	5.90
Sampan	W Main St	Hillsborough	NH	22	\$1,088,000	5.91
McDonald's	W Main St	Hillsborough	NH	30	\$1,483,000	5.91

Closest locations 1-14, Table 1 of 2



Average Annual Spend per Household on Eating Out



\$3,736

Food Away from Home



\$4,239

Food Services & Drinking Places (NAICS 722)



\$234

Alcoholic Beverages Away from Home

Source: This infographic contains data provided by Esri (2024, 2029), Esri-MRI-Simmons (2024), Esri-U.S. BLS (2024), Esri-Data Axle (2024). **Data Axle** POI data updated 3 times per year. * Indicates the number of locations has reached the maximum. Note that the BLS has redefined Meals at Restaurants/Other by removing the mealtime distinction: breakfast, lunch, dinner, and snacks. Where food purchases were made has been maintained. © 2024 Esri

