

# NEW CONSTRUCTION - KECHI

902 Venture Ct. | Kechi, KS 67067

SALE PRICE Contact Broker  
LEASE RATE Contact Broker



**SITE SIZE**  
15,982.2 SF (0.37 A)

**BUILDING SIZE**  
7,920 ± SF

**AVAILABLE SF**  
7,920 ± SF

**ZONING**  
C-3, HEAVY COMMERCIAL

**YEAR BUILT**  
2023-2024

**CEILING HEIGHT**  
18'

**OVERHEAD DOORS**  
1 (12' X 14')

**POWER**  
TBD

**CONSTRUCTION**  
METAL ON STEEL

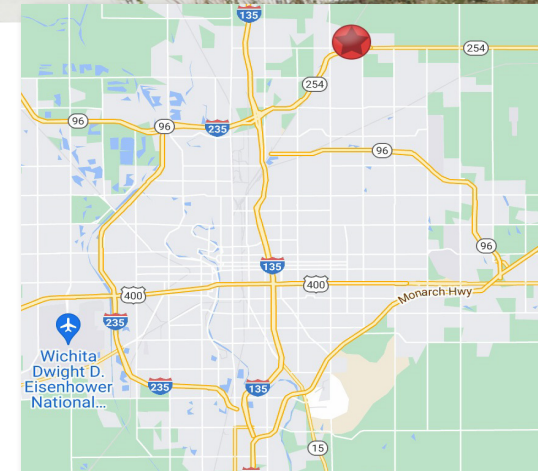
**PRE-CONSTRUCTION TAXES 2023**  
GENERALS: \$540.58

### PROPERTY HIGHLIGHTS

- First generation office/warehouse available for sale or lease.
- Free-standing.
- Office finished to suit.
- Located in close proximity to K-254.

**PARKING**  
DOOR SIDE

**SPECIALS: \$3,093.03**



Offered by: **Grant Tidemann, SIOR**  
316-292-3908 | tidemann@weigand.com

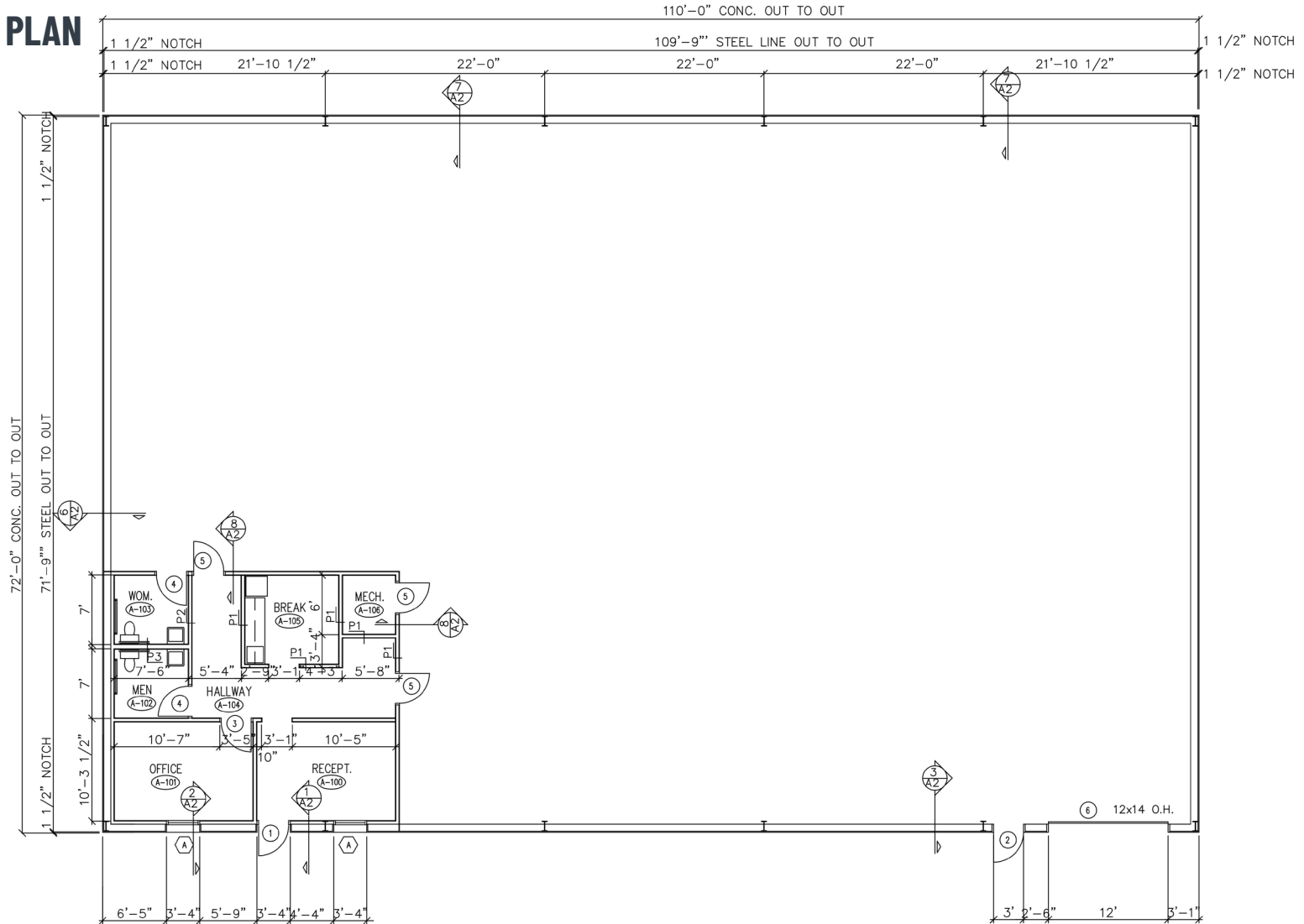
**Bradley Tidemann, SIOR**  
316-650-8853 | btidemann@weigand.com

# NEW CONSTRUCTION - KECHI

902 Venture Ct. | Kechi, KS 67067

SALE PRICE Contact Broker  
LEASE RATE Contact Broker

## FLOOR PLAN



Offered by: **Grant Tidemann, SIOR**

316-292-3908 | tidemann@weigand.com

**Bradley Tidemann, SIOR**

316-650-8853 | btidemann@weigand.com

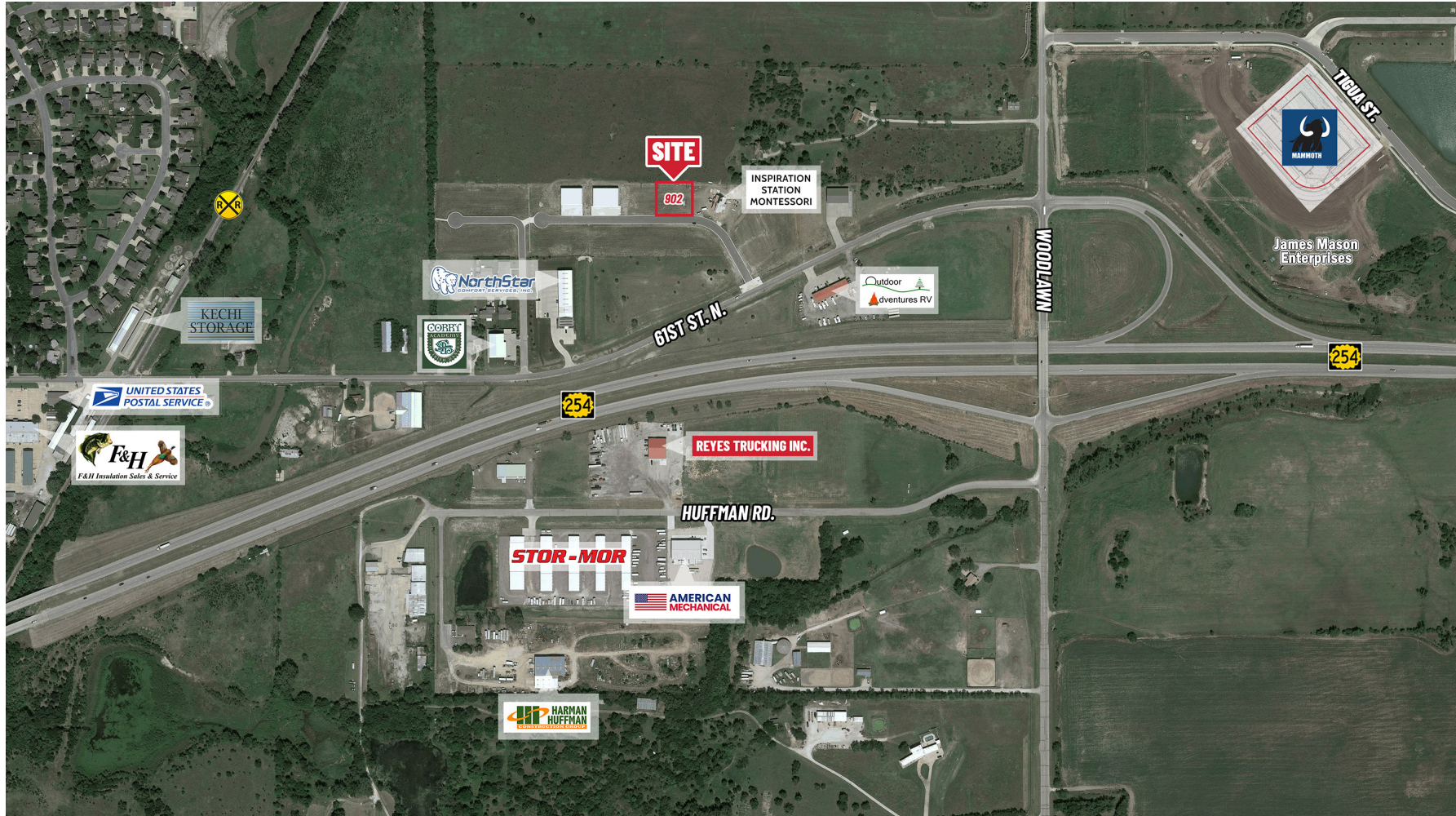


# NEW CONSTRUCTION - KECHI

902 Venture Ct. | Kechi, KS 67067

SALE PRICE Contact Broker  
LEASE RATE Contact Broker

## AERIAL VIEW



All information furnished regarding property for sale, lease, exchange or financing is from sources deemed reliable but no guarantee is made or responsibility assumed as to its accuracy or completeness and you are advised to make your own analysis and verification. Agent hereby notifies prospective buyer/lessee that (a) Agent will be acting as a designated agent of seller/lessor with the duty to represent seller/lessor's interest; and (b) Information given to Agent will be disclosed to seller/lessor.



Offered by: **Grant Tidemann, SIOR**

316-292-3908 | tidemann@weigand.com

**Bradley Tidemann, SIOR**

316-650-8853 | btidemann@weigand.com