

FOR SALE

214

N HORTON PKWY

CHAPEL HILL, TN 37034

**RETAIL/OFFICE
BUILDING**

2,570 SF ON 1.38 ACRES





Overview

Located along Chapel Hill's main commercial corridor, 214 N Horton Pkwy is a highly visible property ideal for an owner-user looking to establish or grow their business. With 1.38 acres of excellent corner lot frontage along Nashville (Horton) Hwy near the entrance to Forrest School, the 2,570 SF standalone building offers strong exposure to daily traffic and convenient access for customers from surrounding neighborhoods. Previously a bank and currently a retail store, the property is dynamic and offers flexibility for a variety of users – whether retail, office, medical, or service-oriented businesses.

Owner-user Retail/Office Opportunity

B2 Zoning - Intermediate Business

1.38 Acres

2,570 SF

Corner Lot with High Visibility

Ample Parking - 21 spaces

Built-in Bank Vault from Prior Bank Use

Owner-User Opportunity

WITH HIGH VISIBILITY
AND AMPLE PARKING



GROWING COMMUNITY OF

Chapel Hill

Chapel Hill is located in Marshall County, TN and has experienced a 2.9% population growth, reaching an estimated 39,169 residents in 2025. This growth exceeds the national average and that of the state of Tennessee during the same period.

This charming community is growing and prime for additional business opportunities.

AREA APPEAL

- Family friendly
- Growing at fast pace
- Only 3 miles from Henry Horton State Park

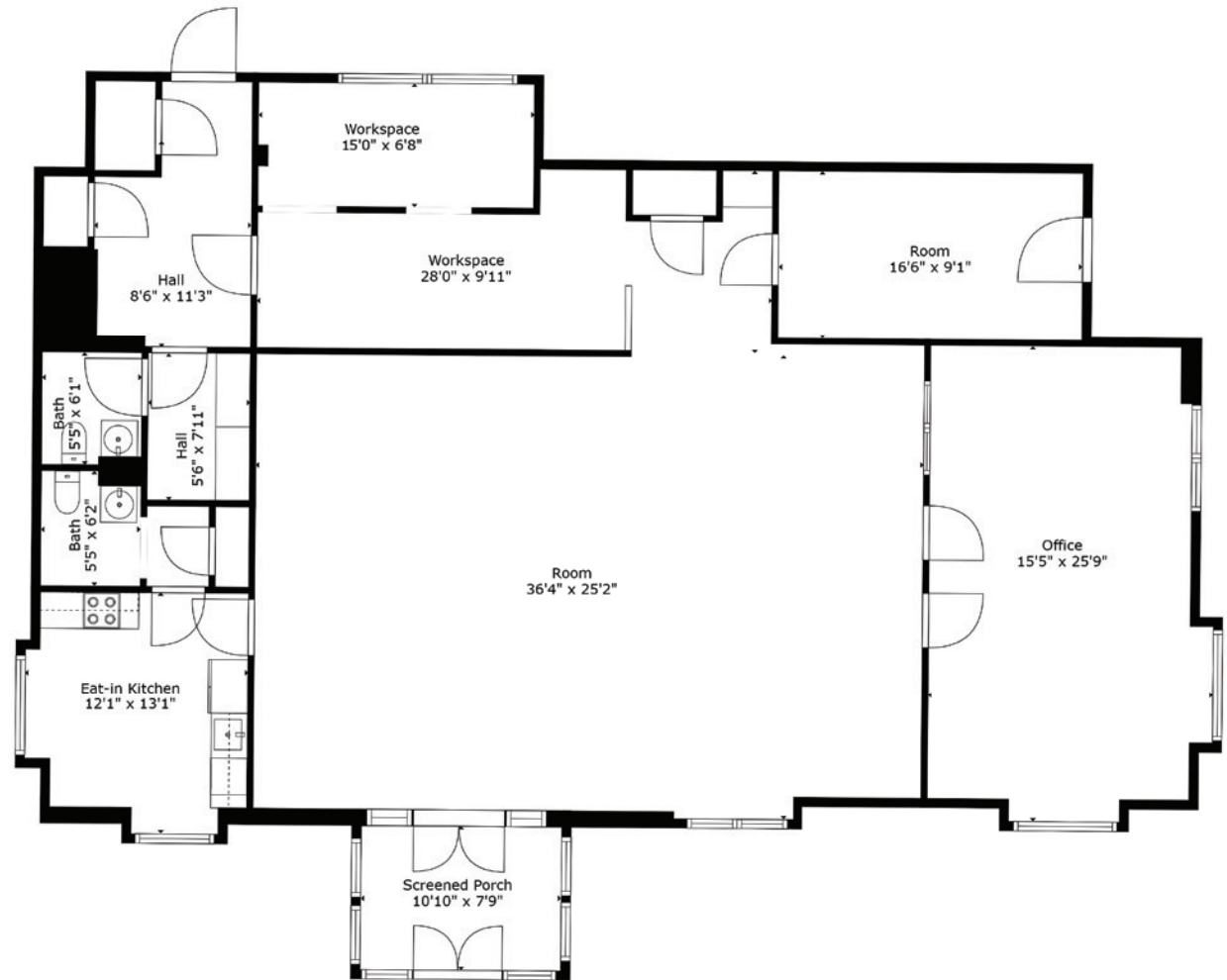
AREA AMENITIES

1. Las Fiestas
2. South Arrow Coffee
3. Amigos
4. Subway
5. Sonic
6. Ace Hardware
7. Timbertown
8. Mac Equipment
9. Sweet and Southern Accents
10. Viking Pizza
11. Pilates of Chapel Hill
12. Chapel Hill Fitness
13. Kees Chiropractic
14. Co Op General Store
15. O'Reillys Auto Parts
16. Holy Smokes BBQ
17. Farm Bureau
18. First Commerce Bank
19. Apex Bank



214

N HORTON PKWY
CHAPEL HILL, TN 37034



For more information, contact:

JAMIE SCOTT

jamie@nashvillerg.com
615.719.1303

PAUL PERONA

paul.perona@streamrealty.com
815.830.7723



357 Riverside Drive
Suite 230B
Franklin, TN 37064
629.356.2253



501 Commerce Street
Suite 1120
Nashville, TN 37203
615.795.0000