

FOR SALE

1130 CONROY LN,
BLDG 100
ROSEVILLE, CA 95661

\$1,300,000



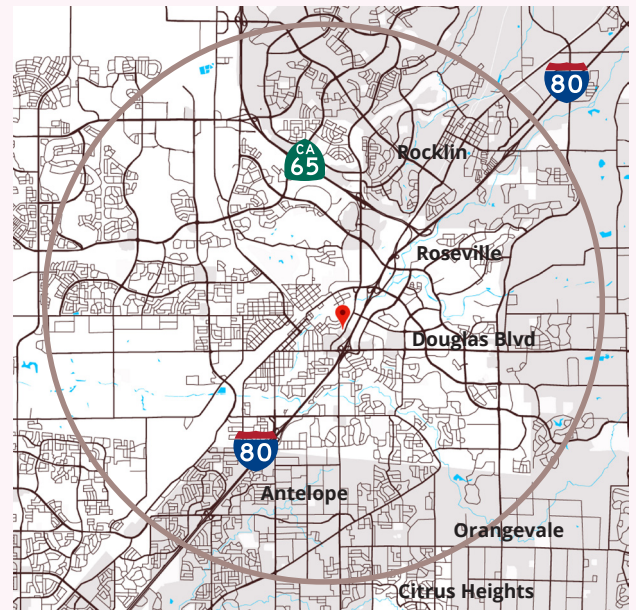
Building 100

Ranga Pathak
Broker Associate
RE/MAX Gold
CA DRE 01364897
916-201-9247

ranga.pathak@norcalgold.com

Property Highlights:

- 5,301 s.f. Medical Office Condominium
- Placer County APN 014-270-055-000
- Remodeled in 2020
- Features multiple exam rooms with plumbing, offices, reception, waiting, large conference room, ADA restrooms and more
- Ideal for a medical office
- Available separately or as part of a portfolio including buildings 100, 200, 300 and 301
- Business Professional Zoning
- Abundant Parking



The information contained herein including square footages has been obtained from sources deemed to be reliable. RE/MAX Gold has not verified and makes no guarantees, warranties or representations regarding the accuracy of the information. You need to conduct a careful, independent evaluation of the property to establish its suitability for your purposes.

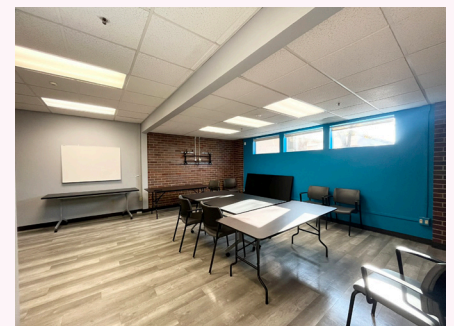
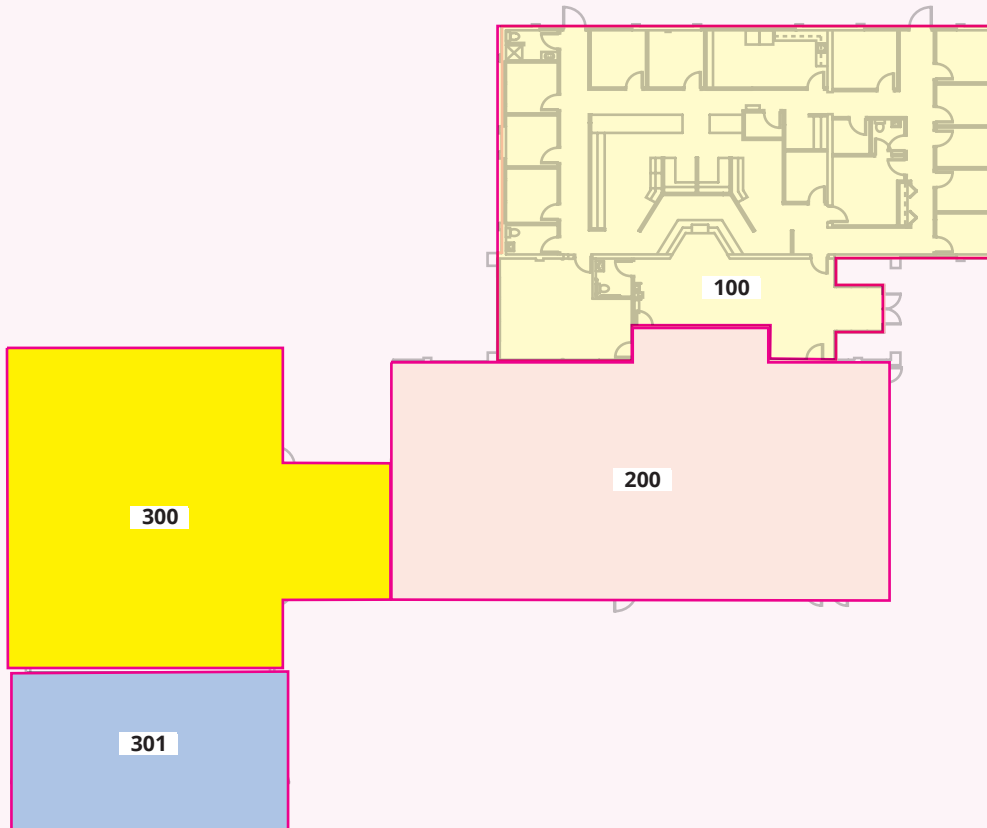
RE/MAX
COMMERCIAL

FOR SALE

1130 CONROY LN,
BLDG 100
ROSEVILLE, CA 95661

Ranga Pathak
Broker Associate
RE/MAX Gold
CA DRE 01364897
916-201-9247

ranga.pathak@norcalgold.com



Bldg 100	
Size	5,301 SF
Sale Price	\$1,300,000
Sale Type	Owner-User
Tenants	Single Tenant
Existing buildout	Medical