

---

FOR LEASE



# THE STOCKDALE TOWERS

---

5060 CALIFORNIA AVENUE  
BAKERSFIELD, CA 93309





# Property Highlights

- Common areas offer rich oak paneling & trim; granite & marble flooring; chandeliers & plush carpeting.
- Full fitness center available to all tenants with flat screen tv's; weight machines; treadmills; stationary bikes; free weights; marble men's & woman's locker/shower areas with oak lockers.
- Basement level truck dock for shipping & receiving
- Improvements Dependent on Term and Rate
- Monument Signage Available and possible building signage
- Ground floor Covenant Coffee Shop
- Credit Union, Bank, and Beauty Salon on Ground Floor

## ASKING RENT

- \$1.85/RSF Modified Gross Excludes Utilities & Janitorial



GROUND FLOOR  
COVENANT  
COFFEE SHOP



ON-SITE FITNESS  
CENTER FOR  
TENANTS (FREE  
MEMBERSHIP  
AVAILABLE TO  
TENANTS AND  
EMPLOYEES)



GROUND FLOOR  
BANK & CREDIT  
UNION



4-LEVEL  
PARKING  
GARAGE  
LOCATED  
ADJACENT  
TO THE  
BUILDING FOR  
TENANTS USE



NICHE BEAUTY  
LOUNGE

CITY VIEW  
SALON

JOSIE WHEELER  
WAX STUDIO

DYE VIVID A CDB  
CONCIERGE  
SALON CONCEPT

THE STRAND





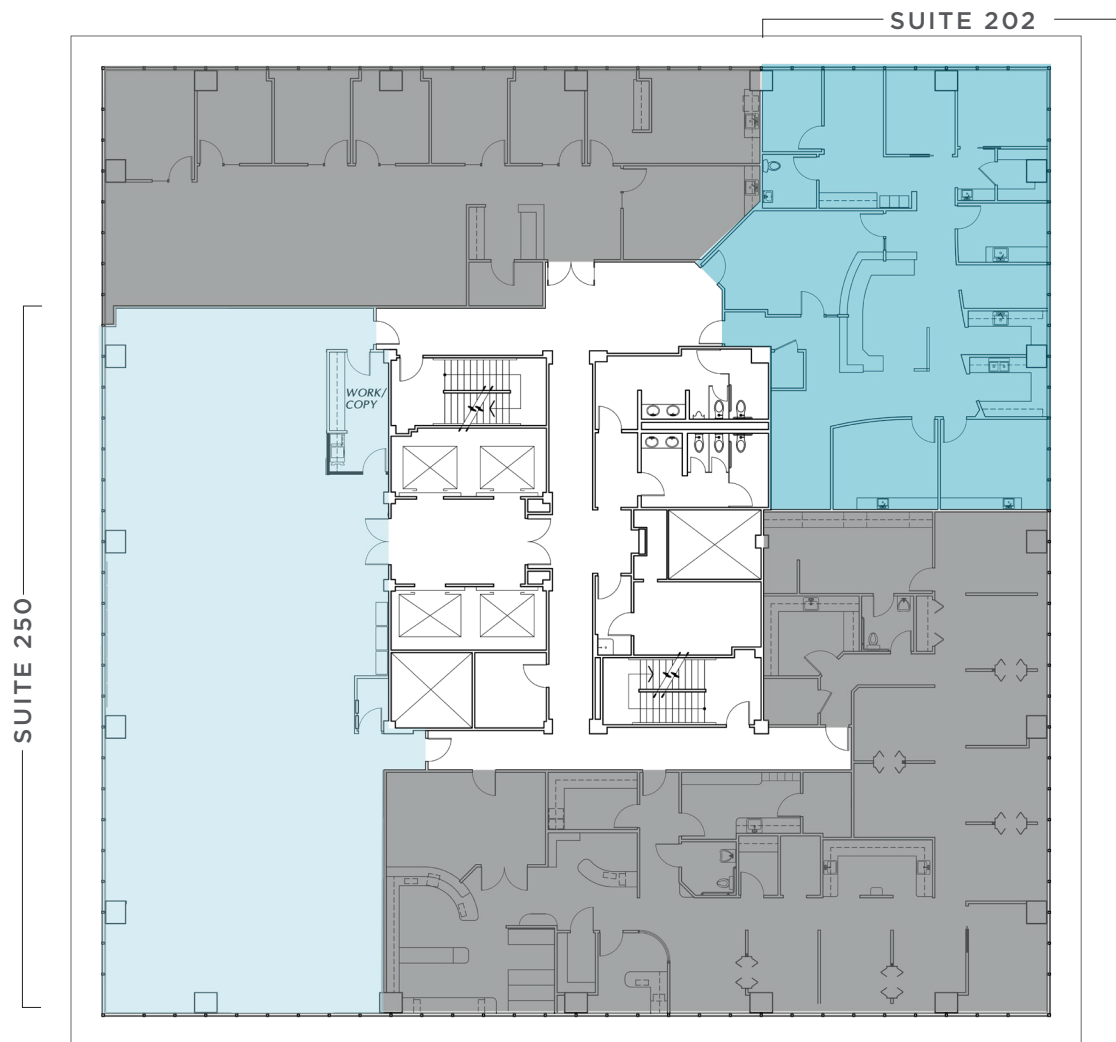
STOCKDALE TOWER I  
5060 CALIFORNIA AVENUE  
AVAILABLE SUITES

Second Floor	Suite 202	±2,564 RSF - Oral Surgery Office
	Suite 250	±3,871 RSF
Third Floor	Suite 300	±4,691 RSF
	Suite 325	±6,750 RSF
Fourth Floor	Suite 400	±4,767 RSF (Divisible from 1,750 RSF to 2,000 RSF)
Fifth Floor	Suite 550	±3,489 RSF
Seventh Floor	Suite 700	±5,000 RSF
Ninth Floor	Suite 950	±815 RSF
Twelfth Floor	Suite 1200	±15,073 RSF



15,073 RSF

## 2nd Floor



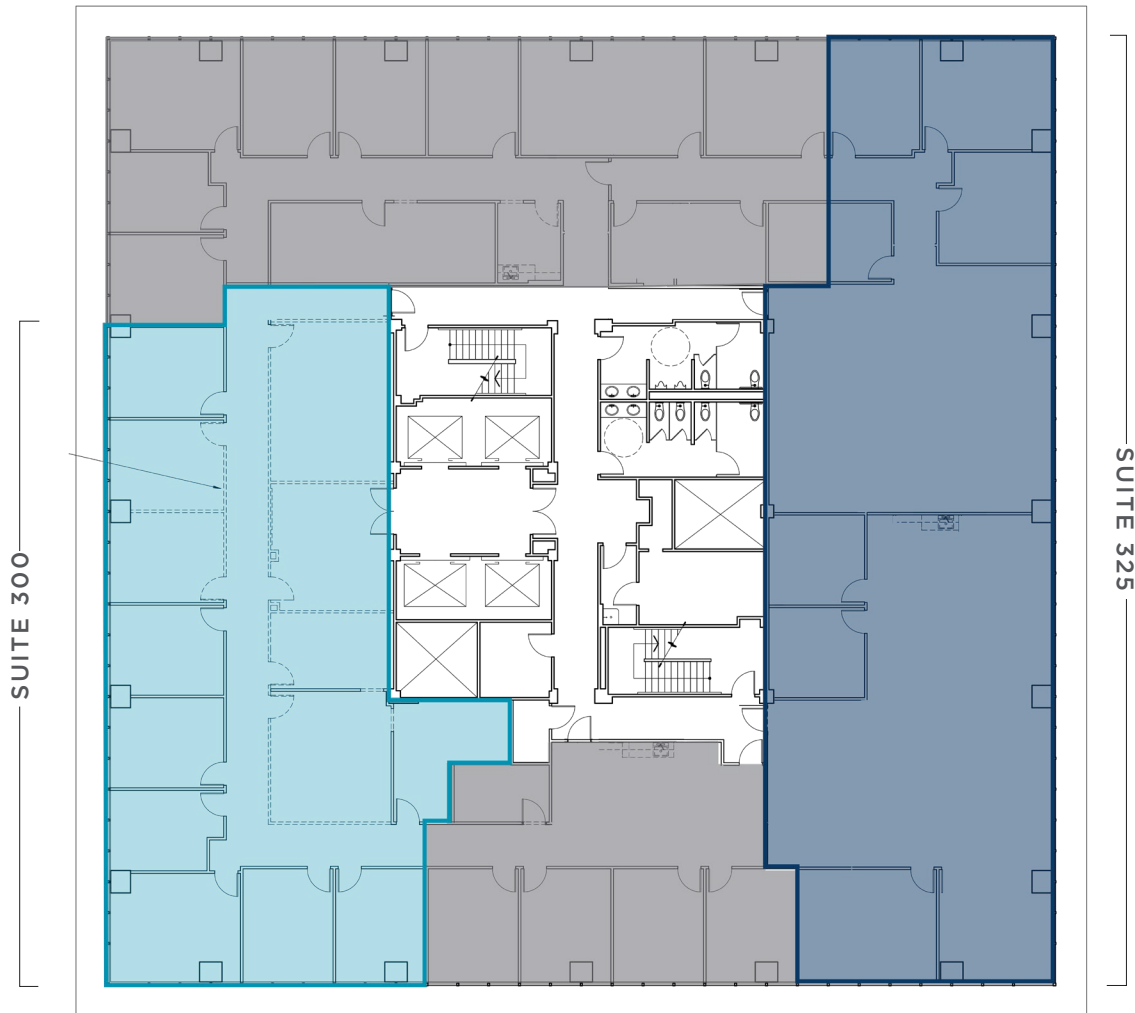
### 2ND FLOOR AVAILABLE SUITES:

- Suite 202 : ±2,564 RSF - Oral Surgery Office
- Suite 250 : ±3,871 RSF



15,073 RSF

# 3rd Floor



## 3RD FLOOR AVAILABLE SUITES:

- **Suite 300** : ±4,691 RSF
- **Suite 325**: ±6,750 RSF  
(Divisible to 2,604 RSF and 4,146 RSF)

15,073 RSF

# 4th Floor



## 4TH FLOOR AVAILABLE SUITES:

- **Suite 400** : ±4,767 RSF  
(Divisible from 1,750 RSF to 2,000 RSF)



15,073 RSF

# 5th Floor



## 5TH FLOOR AVAILABLE SUITES:

- Suite 550 : ±3,489 RSF

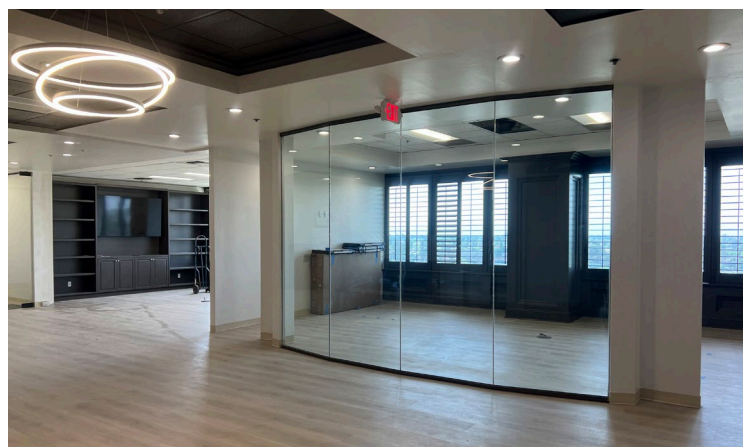
15,073 RSF

# 7th Floor



## 7TH FLOOR AVAILABLE SUITES:

- **Suite 700** : ±5,000 RSF  
(Divisible from 1,500 RSF to 3,726 RSF)





15,073 RSF

# 9th Floor

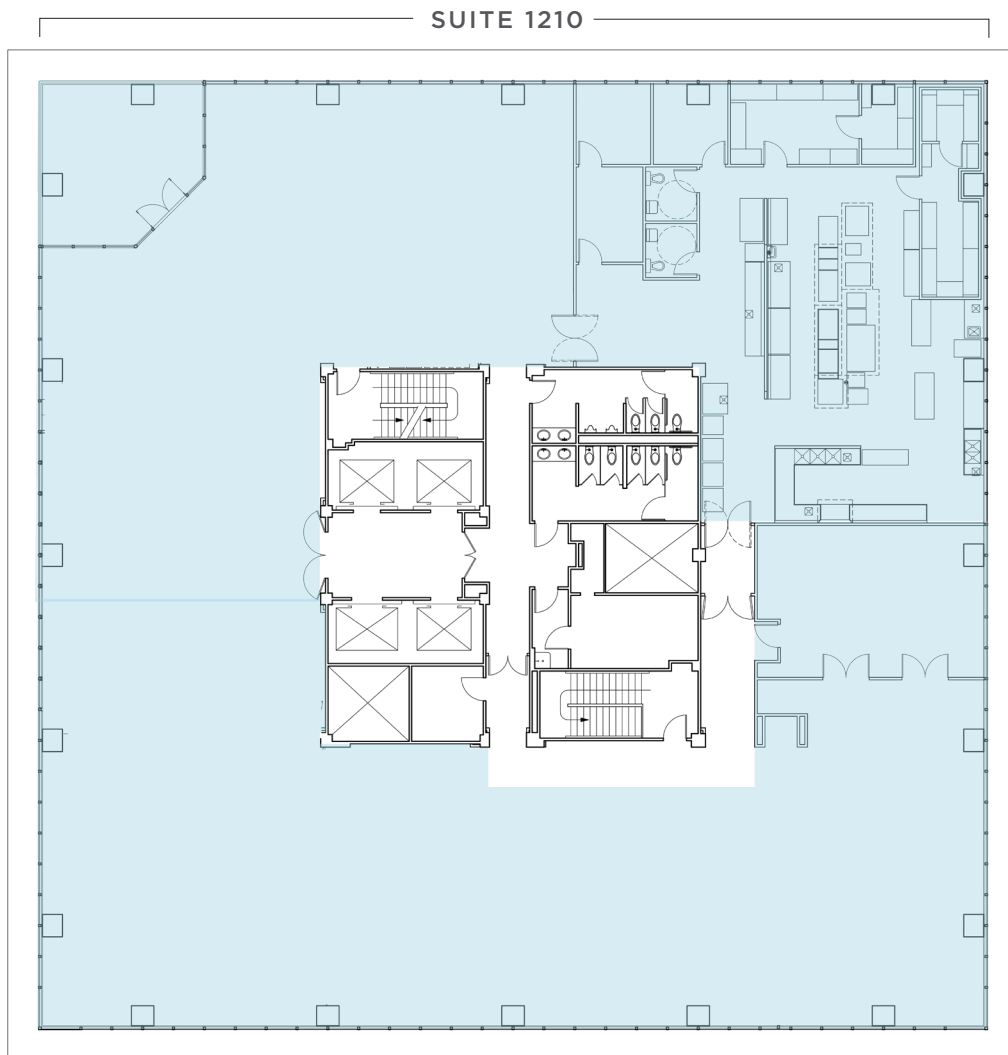


## 9TH FLOOR AVAILABLE SUITES:

- Suite 950 : ±815 RSF

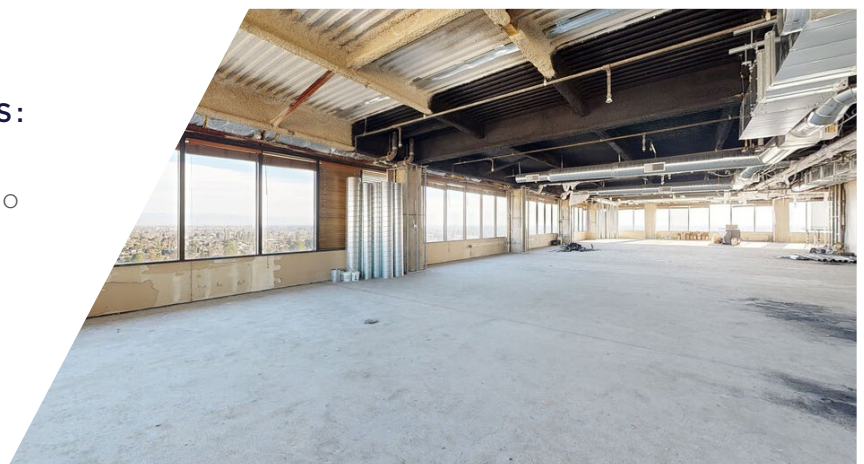
15,073 RSF

# 12th Floor



## 12TH FLOOR AVAILABLE SUITES:

- **Suite 1200** : ±15,073 RSF
- Full Built-Out Kitchen, Outdoor Patio
- Can also be used as office







## CONTACT INFORMATION

### SCOTT SALTERS

Senior Director

+1 661 204 6725

[scott.salters@cushwake.com](mailto:scott.salters@cushwake.com)

### ALEX BALFOUR

Executive Director

+1 661 304 2521

[alex.balfour@cushwake.com](mailto:alex.balfour@cushwake.com)

### KRISTIN FRICKEL

Associate

+1 661 912 6005

[kristin.frickel@cushwake.com](mailto:kristin.frickel@cushwake.com)



©2025 Cushman & Wakefield. All rights reserved. The information contained in this communication is strictly confidential. This information has been obtained from sources believed to be reliable but has not been verified. NO WARRANTY OR REPRESENTATION, EXPRESS OR IMPLIED, IS MADE AS TO THE CONDITION OF THE PROPERTY (OR PROPERTIES) REFERENCED HEREIN OR AS TO THE ACCURACY OR COMPLETENESS OF THE INFORMATION CONTAINED HEREIN, AND SAME IS SUBMITTED SUBJECT TO ERRORS, OMISSIONS, CHANGE OF PRICE, RENTAL OR OTHER CONDITIONS, WITHDRAWAL WITHOUT NOTICE, AND TO ANY SPECIAL LISTING CONDITIONS IMPOSED BY THE PROPERTY OWNER(S). ANY PROJECTIONS, OPINIONS OR ESTIMATES ARE SUBJECT TO UNCERTAINTY AND DO NOT SIGNIFY CURRENT OR FUTURE PROPERTY PERFORMANCE.