

PRIME NEW HYDE PARK INDUSTRIAL PROPERTY FOR SALE OR LEASE:



**110 Denton Avenue
New Hyde Park, NY**

Property Description

- Building Size: 12,500 SF
- Lot Size : 15,699 SF
- Ceiling Height: 16.5 ' Clear
- 1 Loading Dock / 1 Drive-in
- Ground Floor Office: 2,000 SF
- Stories: 2 (Mezzanine)
- Gas/Sewers: Yes/Yes
- Power: 600 Amps (3-Phase)
- Sprinklers: Yes
- Parking: Rear Of Building & Street
- Taxes: \$52,689

For Information Contact Exclusive Broker:

L u k e A n d e r s o n

Licensed Real Estate Salesperson

📞 Cell: 631.219.4599

📞 Office: 631.694.3500 Ext 308

✉️ Landerson@industryone.com

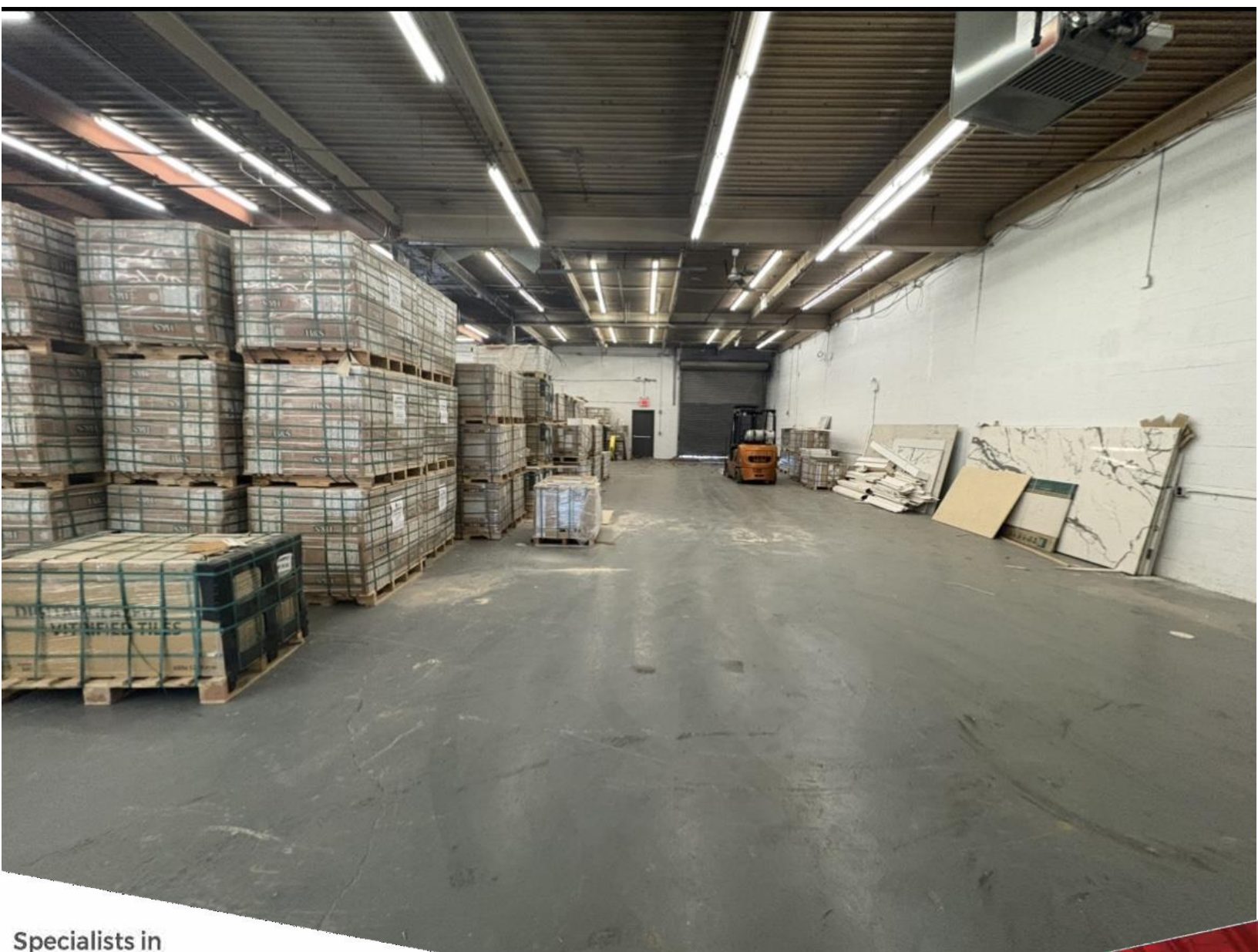


**For Sale: \$4,500,000
For Lease: \$15,000/Month NNN**

**Specialists in
Office, Industrial, Retail &
Investment Real Estate Since 1985**

All information is from sources deemed reliable, and is submitted subject to errors, omissions, change of price, rental, prior sale and withdrawal without notice.

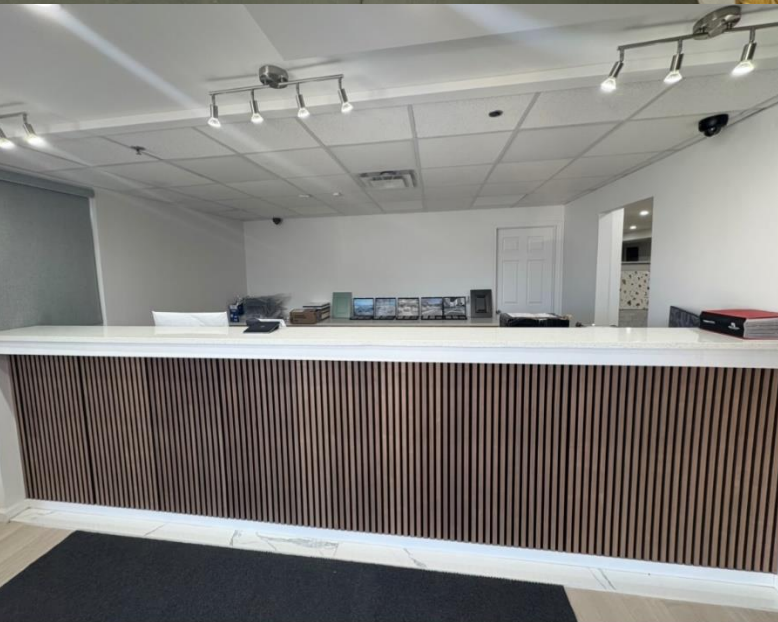
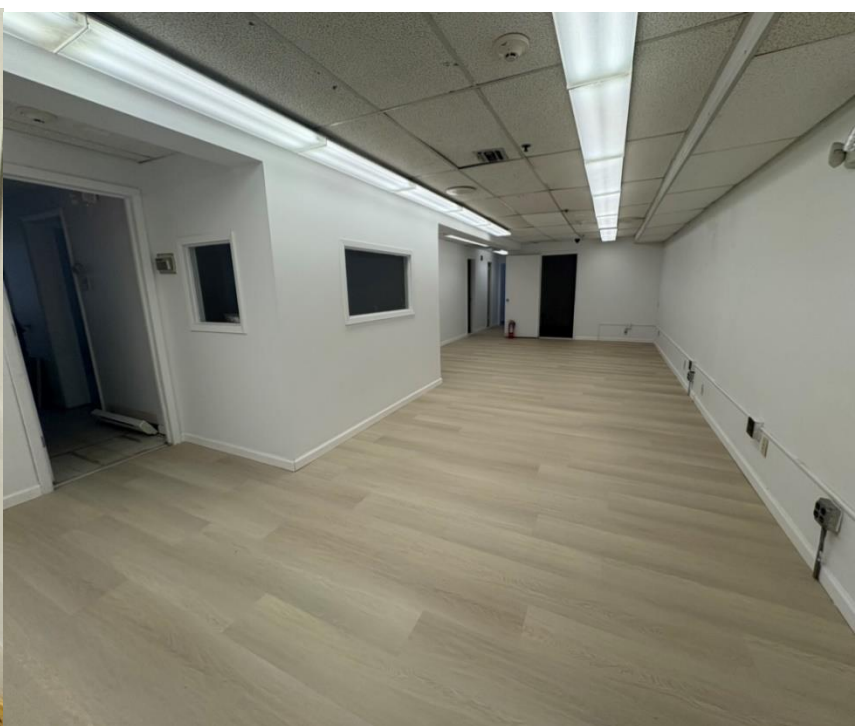
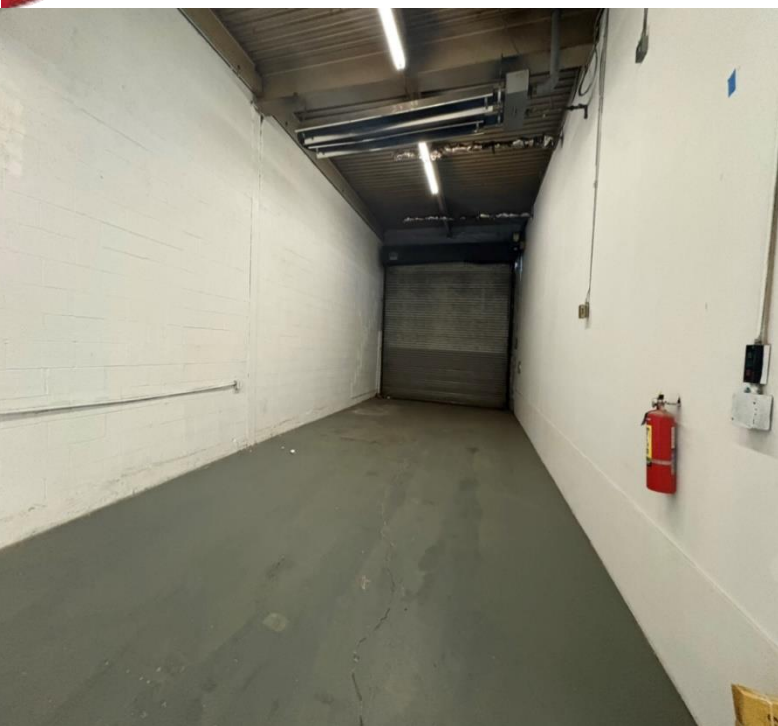
**631-694-3500
www.industryone.com**



**Specialists in
Office, Industrial, Retail &
Investment Real Estate Since 1985**

All information is from sources deemed reliable, and is submitted subject to errors, omissions, change of price, rental, prior sale and withdrawal without notice.

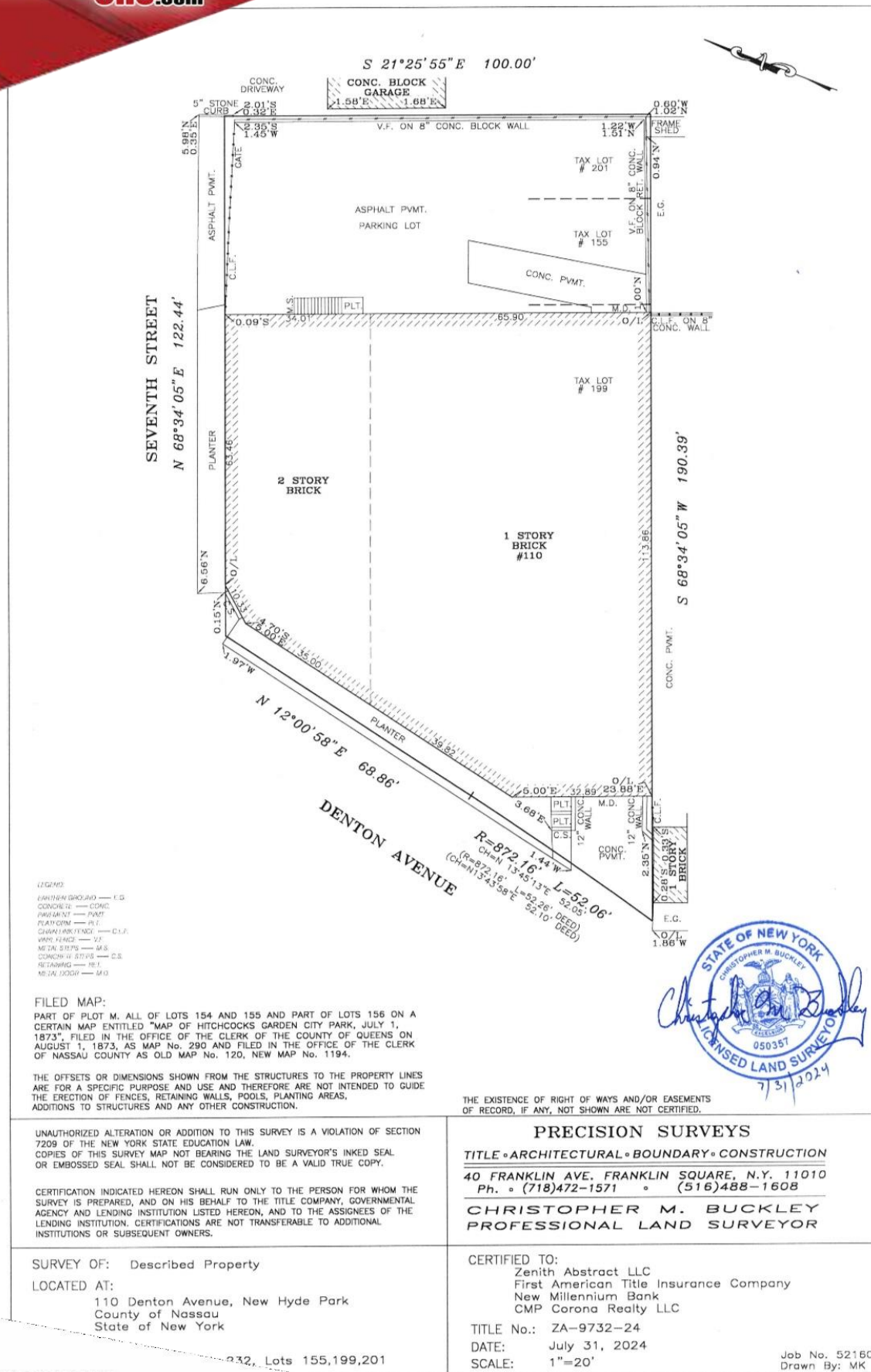
631-694-3500
www.industryone.com



**Specialists in
Office, Industrial, Retail &
Investment Real Estate Since 1985**

All information is from sources deemed reliable, and is submitted subject to errors, omissions, change of price, rental, prior sale and withdrawal without notice.

631-694-3500
www.industryone.com



Specialists in
Office, Industrial, Retail &
Investment Real Estate Since 1985

All information is from sources deemed reliable, and is submitted subject to errors, omissions, change of price, rental, prior sale and withdrawal without notice.

631-694-3500
www.industryone.com