



Immediately available office space for sublease

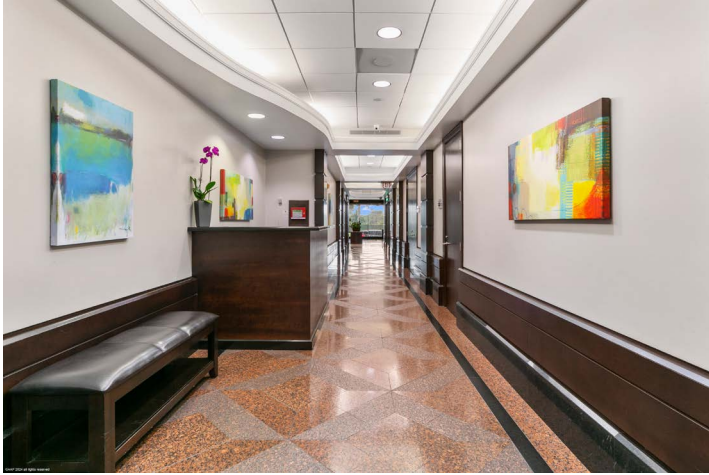
- Suite 450 - 1,609 sf
- Available immediately
- Lease expiration: 2/28/2027
- Rental rate: negotiable
- Conveniently located near I-95
- 10 minutes to Palm Beach International Airport
- Furniture can be provided

Get more information

Greg Martin, Principal
+1 903 1815
greg.martin@avisonyoung.com

Justin Cope, Principal
+1 954 903 3701
justin.cope@avisonyoung.com

Lisa Blumer, Principal
+1 954 903 3703
lisa.blumer@avisonyoung.com



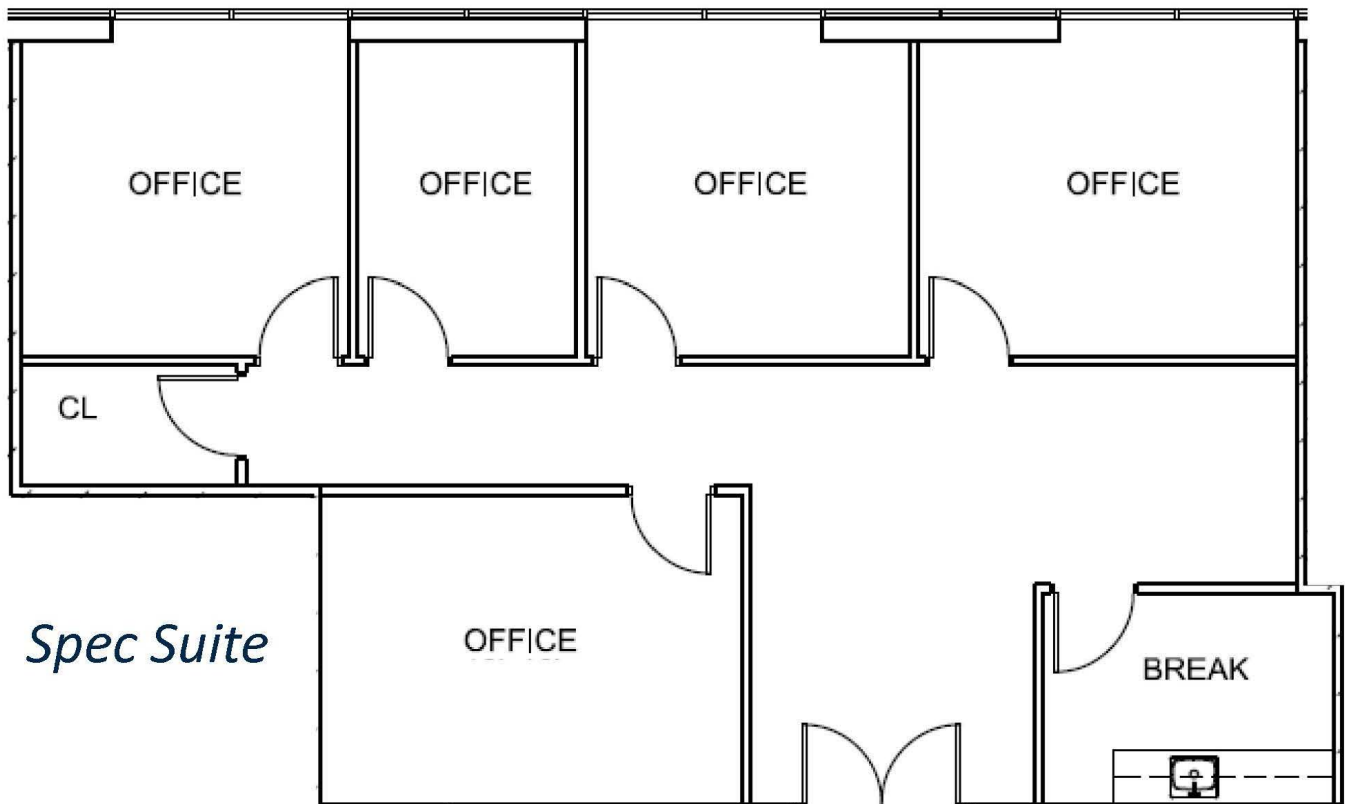
**Get more
information**

Greg Martin
Principal
+1 954 903 1815

Justin Cope, SIOR
Principal
+1 954 903 3701

Lisa Blumer, CCIM
Principal
+1 954 903 3703

Suite 450 1,609 sf



**Get more
information**

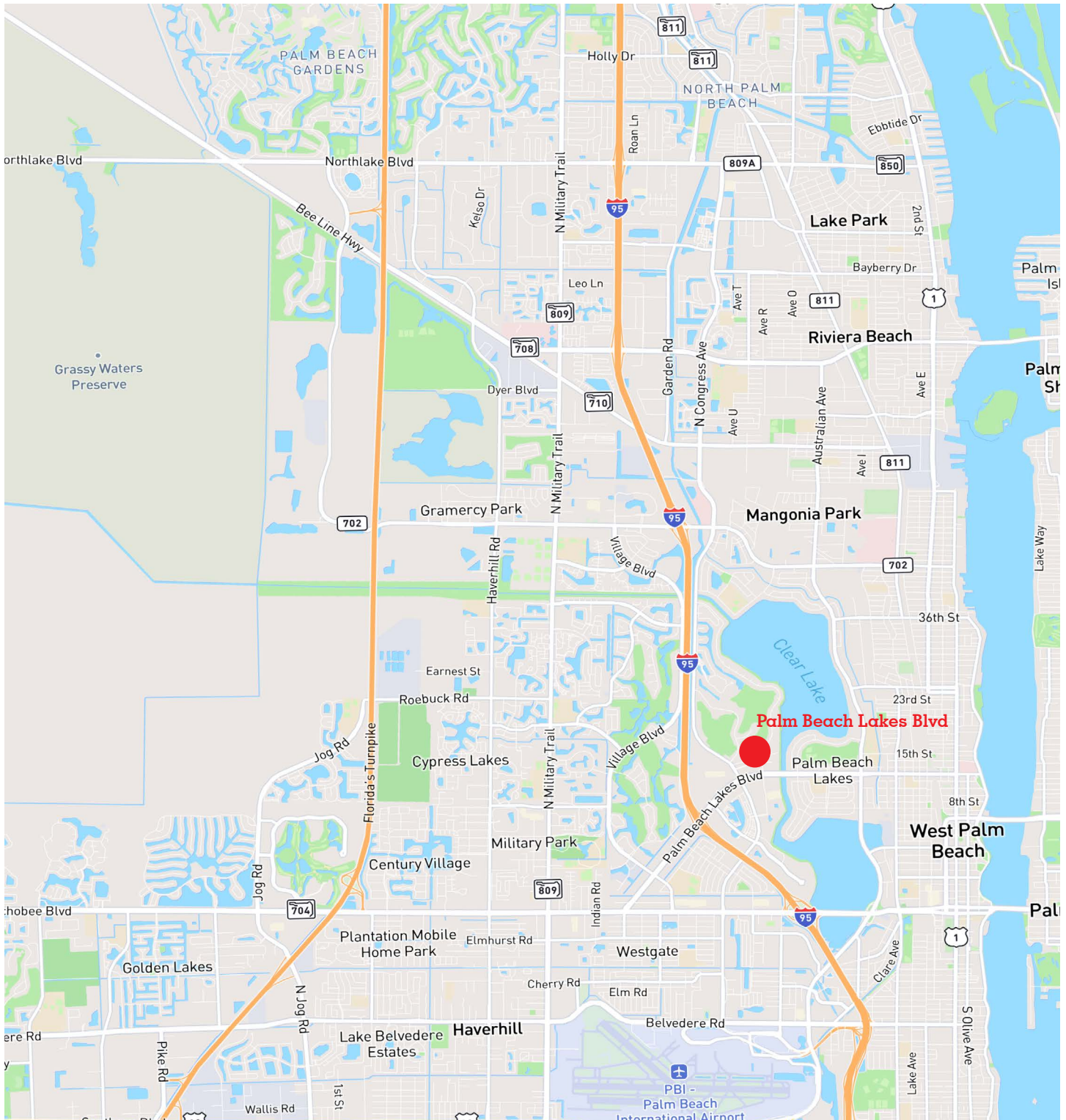
Greg Martin
Principal
+1 954 903 1815

Justin Cope, SIOR
Principal
+1 954 903 3701

Lisa Blumer, CCIM
Principal
+1 954 903 3703

Location map

1645 Palm Beach Lakes Blvd
West Palm Beach, FL 33401



**Get more
information**

Greg Martin
Principal
+1 954 903 1815

Justin Cope, SIOR
Principal
+1 954 903 3701

Lisa Blumer, CCIM
Principal
+1 954 903 3703

**AVISON
YOUNG**