

WING OFFICE PARK FOR LEASE

3950- 3960
PARAMOUNT BLVD
LAKEWOOD, CA 90712

Local Expertise. International Reach. World Class.



Garrett Massaro

Principal | DRE 01774171

PH: 562.354.2516 | E: gmassaro@leelalb.com

Brandon Carrillo

Principal | DRE 01745362

PH: 562.354.2510 | E: bcarrillo@leelalb.com



PROPERTY HIGHLIGHTS

- » Available: $\pm 1,969$ SF at \$2.30 / SF FSG
 $\pm 2,644$ SF at \$2.50 / SF FSG
- » Wing Office Park is strategically located on the border of Long Beach and Lakewood and offers a 30-minute solution to major markets, airports, and ports.
- » Building was recently refurbished with new roofs, New HVAC System, New Digital Controls, New Parking Lot Asphalt, New exterior Paint, and more improvements planned
- » Adjacent to Douglas Park Master Planned Development & Long Beach Airport
- » Local Amenities - Long Beach Airport, Lakewood Country Club, Restaurants, Entertainment
- » Golf Course Views, Garden Rise / Walk Up Business Park, & Elevator Served
- » Excellent 405 Freeway Access
- » Frontier Fios Available
- » **Recently Completed:** Covered Parking with Solar Panels and Lobby / Restroom Refurbishment



Up to $\pm 1,969$ SF
Of Office Space
Available



Abundant
Surface Parking
4:1,000



Easy Access
to 405
Freeway





Copyright © Lee & Associates. All rights reserved. No part of this work may be reproduced or distributed without written permission of the copyright owner. The information contained in this report was gathered by Lee & Associates from sources believed to be reliable. Lee & Associates, however, makes no representation concerning the accuracy or completeness of such information and expressly disclaims any responsibility for any inaccuracy contained herein

AVAILABLE SPACES

AVAILABLE SUITES AT 3960 PARAMOUNT BLVD:

SUITE	SQ FT	RATE	DESCRIPTION	MATTERPORT VIDEO TOUR
105	±2,644 SF	\$2.50 / SF FSG	Available 1/1/2025. Fully Refurbished suite with Extensive Glass Line and Golf Course Views. 2 Private offices, Large Kitchen with Sink / Break Room and Storage / IT Room. Double Door Entry opens to Luxurious Lobby.	
110	±1,969 SF	\$2.30 / SF FSG	Available Now. 3 Private Offices, Large Conference Room, Open area for Cubicles	CLICK HERE



Copyright © Lee & Associates. All rights reserved. No part of this work may be reproduced or distributed without written permission of the copyright owner. The information contained in this report was gathered by Lee & Associates from sources believed to be reliable. Lee & Associates, however, makes no representation concerning the accuracy or completeness of such information and expressly disclaims any responsibility for any inaccuracy contained herein



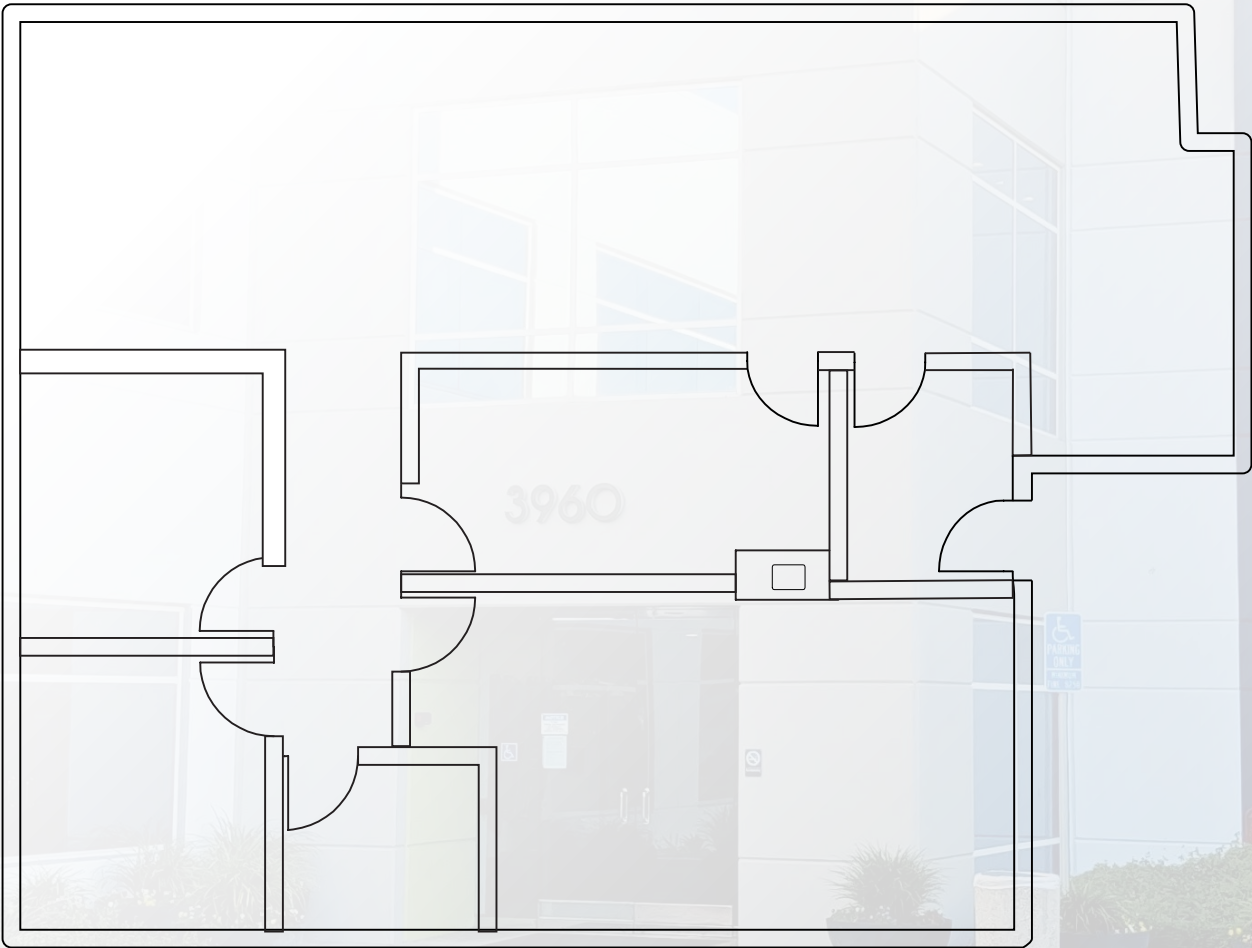
FLOOR PLAN - 3960 PARAMOUNT BLVD #105

**Not To Scale*



FLOOR PLAN - 3960 PARAMOUNT BLVD #110

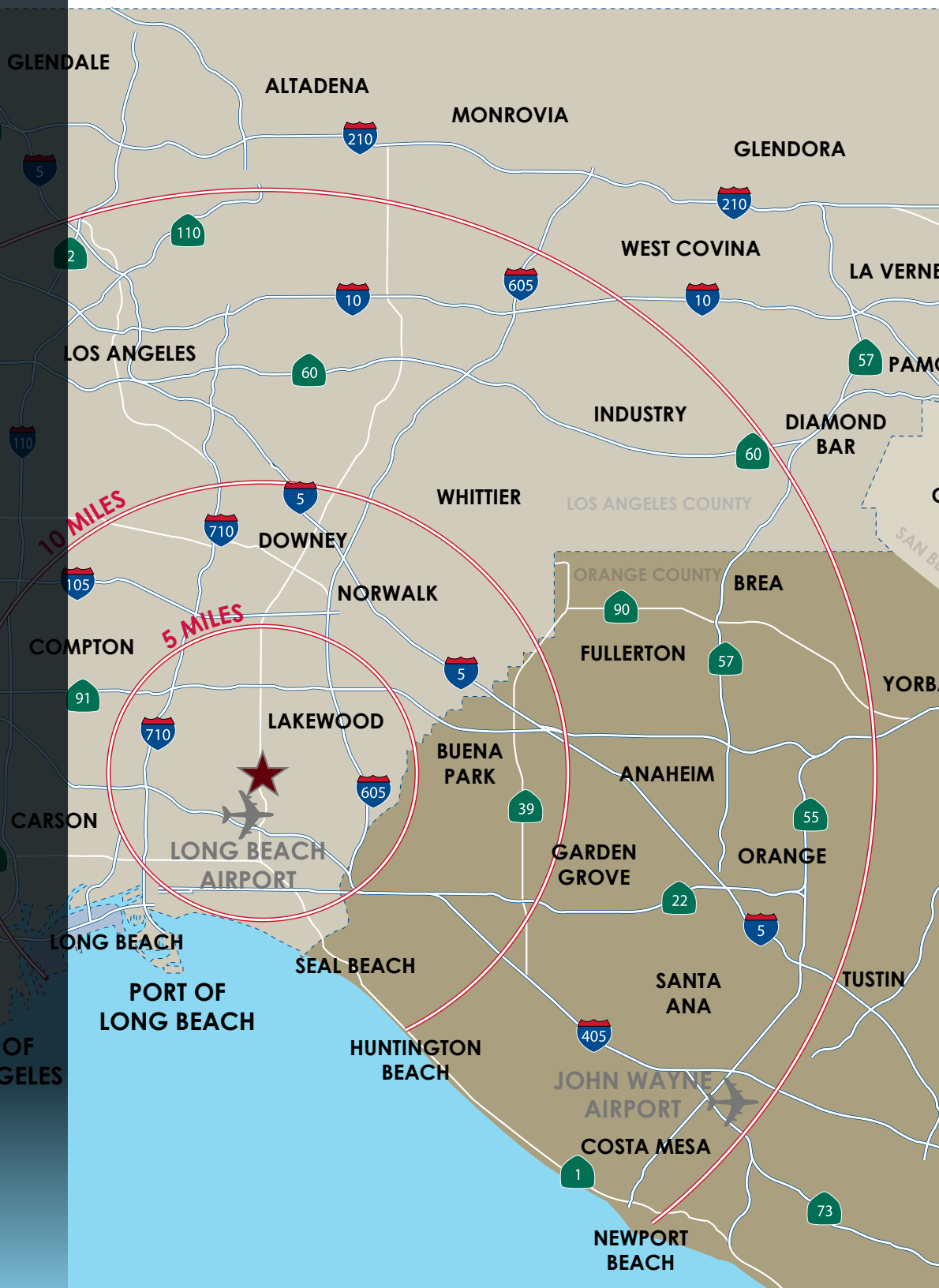
**Not To Scale*



ABOUT DOUGLAS PARK

- » “The 220-acre Douglas Park, an office, industrial and retail business park adjacent to the Long Beach Airport, is a bustling center of commerce for the City of Long Beach. Companies representing a diverse array of industries call the campus home, from automotive parts suppliers to health care providers, engineering firms and more. But one of the sectors with the largest presence in the park has deep roots in the history of the land itself: the aerospace and aviation industry.” - Long Beach Business Journal
- » Walking Distance To Restaurants, Shopping, and Public Transportation
- » Close Proximity to the Ports of Los Angeles and Long Beach
- » 405, 710, 605, and 91 Freeway Access
- » Centrally Located Between Los Angeles and Orange County
- » Located Between Two Major Airports: Los Angeles International Airport & John Wayne Airport

16 MILES TO LAX
0.3 MILES TO LGB
20 MILES TO SNA





OFFICE

- 1. THE TERMINAL
 - APPRAISAL PACIFIC
 - POSTCITY FINANCIAL CREDIT UNION
 - THE CORE GROUP
 - MOUNTAIN-BISHOP PRIVATE WEALTH MANAGEMENT
 - CALCOM FCU
 - THE SULLIVAN GROUP OF COURT REPORTERS
- 9.
 - SCIENCE CARE
 - IQA SOLUTIONS
 - ARIGAS BUSINESS SUPPORT CENTER
 - DOUGLAS PARK MEDICAL SPECIALIST
 - STANTEC
 - INSIGHT EXAMINATION SERVICES
 - OVERLAND PACIFIC & CUTLER
 - INTERFACE SECURITY SYSTEMS
 - LOMCO
 - JDA
 - FELAHY LAW GROUP
 - GUNN | JERKENS
 - AMERICAN WORLDWIDE AGENCIES
 - MHP STRUCTURAL ENGINEERS
 - LIN MANUFACTURING
- 10. UNITED OIL
- 16. DOUGLAS PARK MEDICAL
 - LONG BEACH GASTROENTEROLOGY
 - COLUMBIA PEDIATRICS
 - LASER SKIN CARE DERMATOLOGY ASSOCIATES
- 17. NAUTILUS INTERNATIONAL HOLDING CORP
- 27. BOEING

INDUSTRIAL / FLEX

- 2. SHIMADZU AIRCRAFT EQUIPMENT USA
- 3. TURBO AIR
- 5. VIRGIN GALACTIC
- 6. UNITED PACIFIC
- 7. UNIVERSAL TECHNICAL INSTITUTE
- 8. RUBBERCRAFT
- 12. LD PRODUCTS
- 13. BOEING
- 14. PROVIDENCE INDUSTRIES / MY DYER
- 15. THE KONG COMPANY
- 19. MERCEDES BENZ
- 20. MC²
- 21. FOOD PHARMA
- 22. INDUSTRIAL BUILDINGS FOR LEASE
- 24. PACIFIC POINTE WEST - FUTURE INDUSTRIAL DEVELOPMENT
- 25. PACIFIC POINTE WEST - FUTURE INDUSTRIAL DEVELOPMENT
- 30. PACIFIC POINTE EAST
 - HUMAN TOUCH
 - SIMPLE HUMAN
- 31. FUTURE FLEX INDUSTRIAL BUILDING

RETAIL / HOSPITALITY

- 11. HAMPTON INN / HOMEWOOD SUITES
- 18.
 - COURTYARD MARRIOTT
 - THE HABIT BURGER
 - CALIFORNIA FISH GRILL
 - JERSEY MIKE'S SUBS
 - THE FLAME BROILER
 - STARBUCKS
- 26. LONG BEACH EXCHANGE (LBX)
 - ORCHARD SUPPLY HARDWARE
 - NORDSTROM RACK
 - 365 BY WHOLE FOODS
 - IN & OUT BURGER
 - ULTA
 - TJ MAXX
 - PETSMART
 - GRITCYCLE
 - RA YOGA
 - ORANGETHEORY FITNESS

MISC

- 4. LONG BEACH AIRPORT
- 22. PARK
- 28. LAKEWOOD COUNTRY CLUB
- 29. LONG BEACH CITY COLLEGE

ABOUT LAKEWOOD, CA

- » The City of Lakewood is located in southern Los Angeles County, about 23 miles southeast of Los Angeles. The area of the city is 9.5 square miles. Lakewood's population was estimated by the State Department of Finance to be 79,919 as of January 2020.
- » Lakewood has about 150 miles of streets and 300 miles of sidewalks. More than 36,000 trees line city streets and shade city parks. About 150 acres of the city are devoted to parks and other landscaped open space.
- » The economic base of the city is primarily commercial/retail. Almost 3,000 businesses are located in Lakewood.
- » Lakewood is predominantly a single-family community with 85 percent of its housing units being single-family detached structures.

For more information, please visit:

<https://www.lakewoodcity.org/about/default.asp>



Encompasses
±9.46 Square
Miles



Population
±79,919
(in 2020)



Median Annual
Household
Income \$37,459



LOCAL MAP





**LEE &
ASSOCIATES**

COMMERCIAL REAL ESTATE SERVICES

**3950- 3960
PARAMOUNT BLVD**

LAKEWOOD, CA 90712

Local Expertise. International Reach. World Class.

Garrett Massaro

Principal | DRE 01774171

PH: 562.354.2516 | E: gmassaro@leelalb.com

Brandon Carrillo

Principal | DRE 01745362

PH: 562.354.2510 | E: bcarrillo@leelalb.com