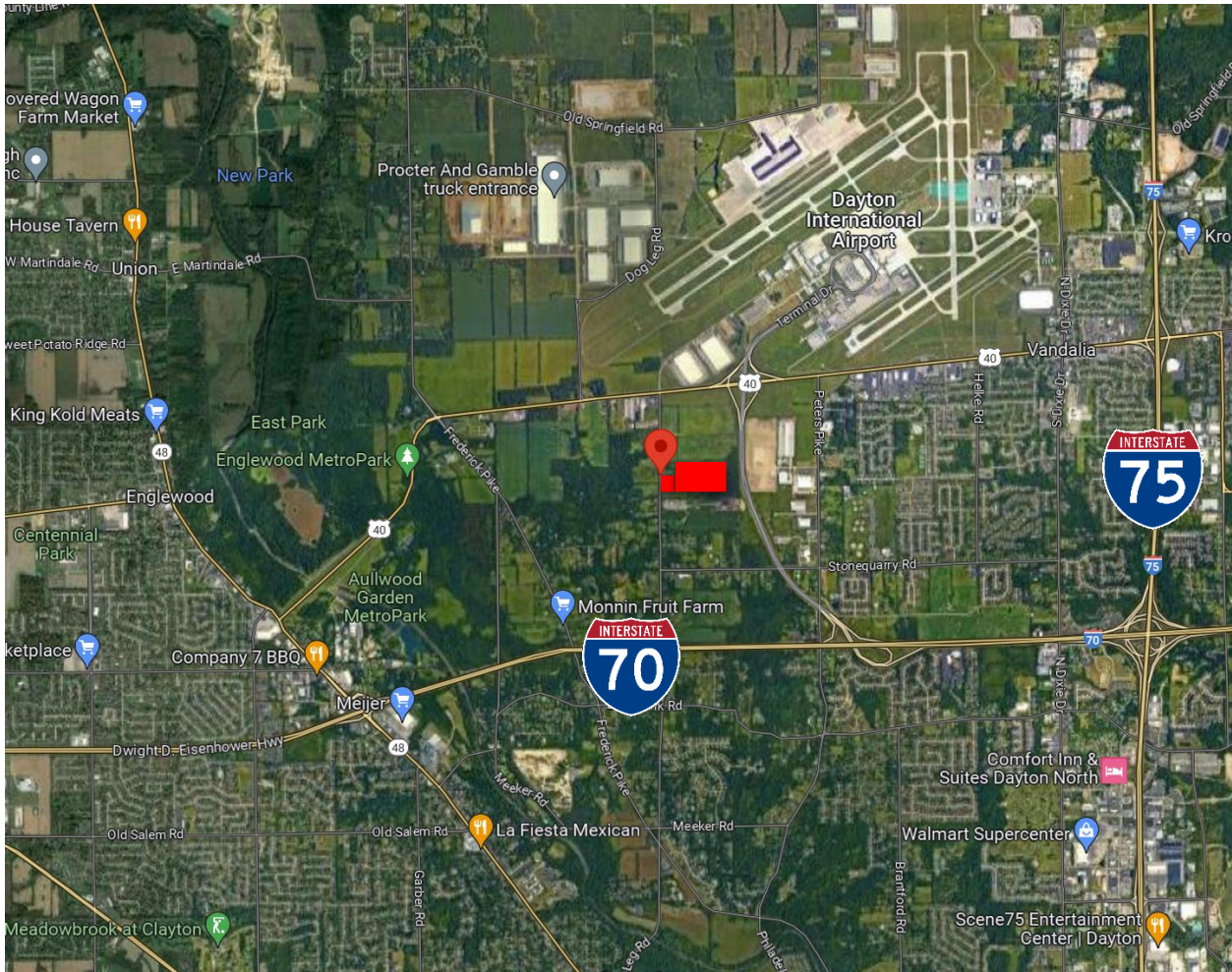




9100 Dog Leg Road Dayton, Ohio 45414



Property & Location Highlights:

- 60 acres available with utility extension complete for development
- Industrial/Commercial Zoning
- Minutes from I-75, I-70 & Dayton International Airport
- Located in the Miami Valley's most distribution sites
- 15-year 100% Tax Abatement Available

Ben Redick

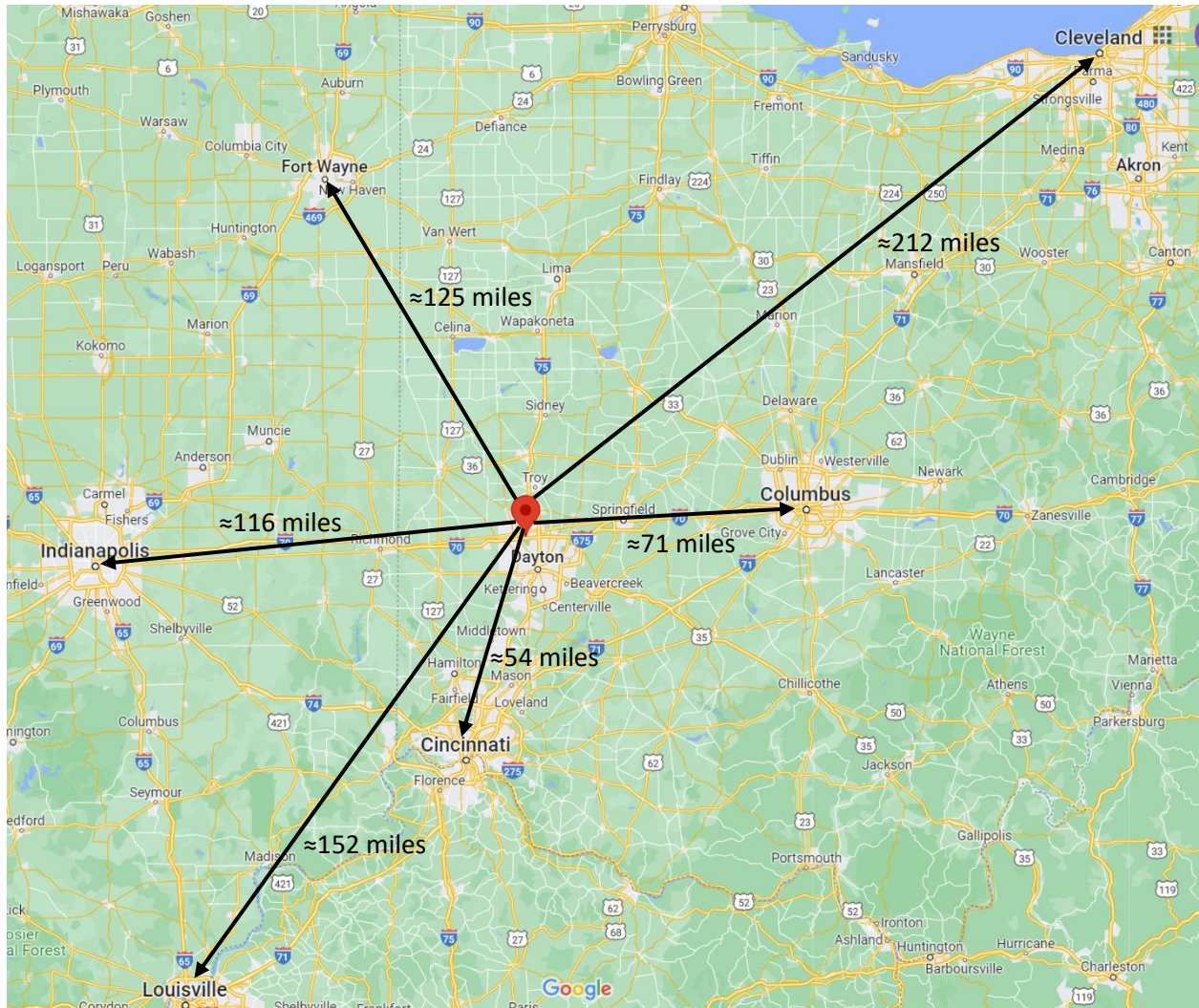
937-216-4511

bredick@brunsrealty.com



9100 Dog Leg Road Dayton, Ohio 45414

Drive Time & Demographics



WITHIN 15 MINUTES DRIVING TIME:

- ❖ 161,550 Population
- ❖ 76,184 Employed
Population Aged 16+
- ❖ 7,787 Transportation
Workers

Ben Redick

WITHIN 30 MINUTES DRIVING TIME:

- ❖ 707,808 Population
- ❖ 328,297 Employed
Population Aged 16+
- ❖ 31,809 Transportation
Workers

937-216-4511

WITHIN 45 MINUTES DRIVING TIME:

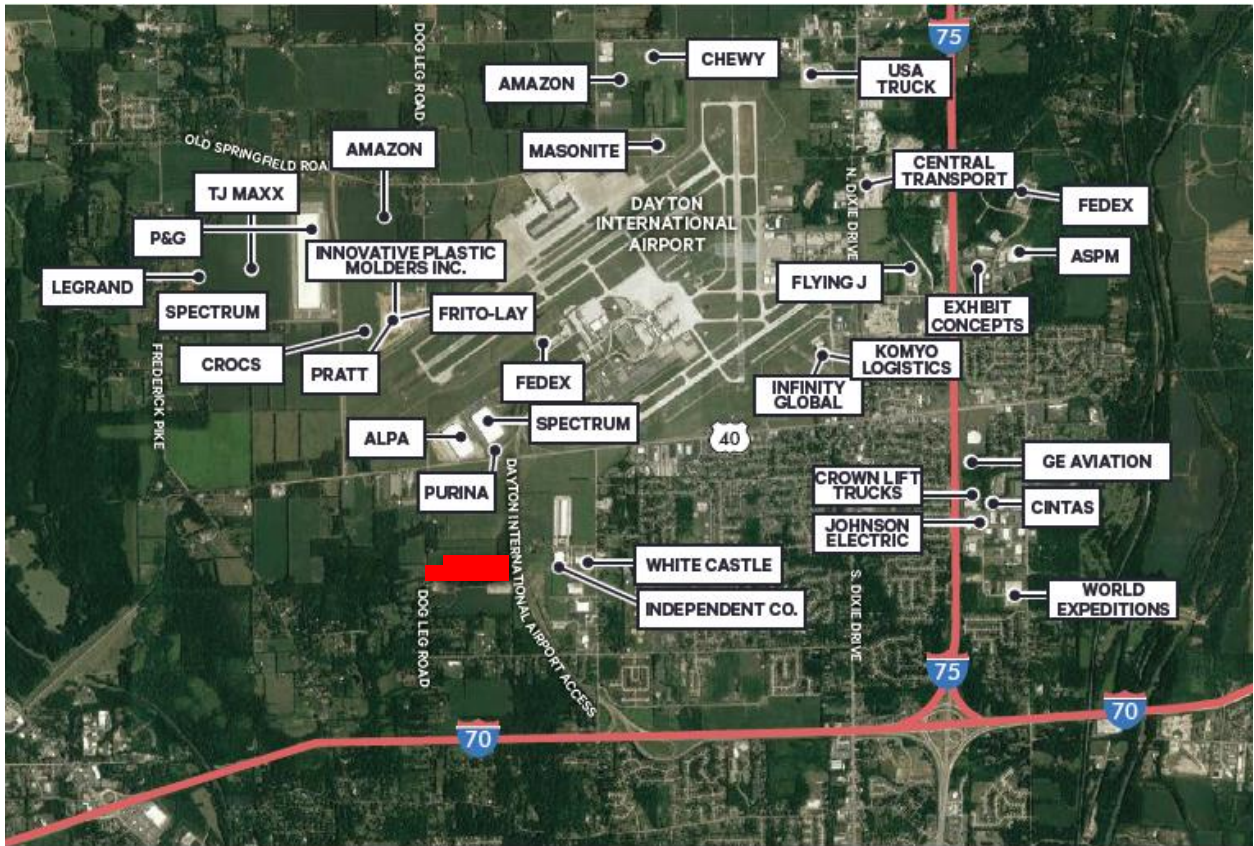
- ❖ 1,286,889 Population
- ❖ 600,901 Employed
Population Aged 16+
- ❖ 52,011 Transportation
Workers

bredick@brunsrealty.com



**9100 Dog Leg Road
Dayton, Ohio 45414**

Location



Versatile Property in the Miami Valley that is an open canvas for all your commercial needs in a prime real estate location!

Ben Redick

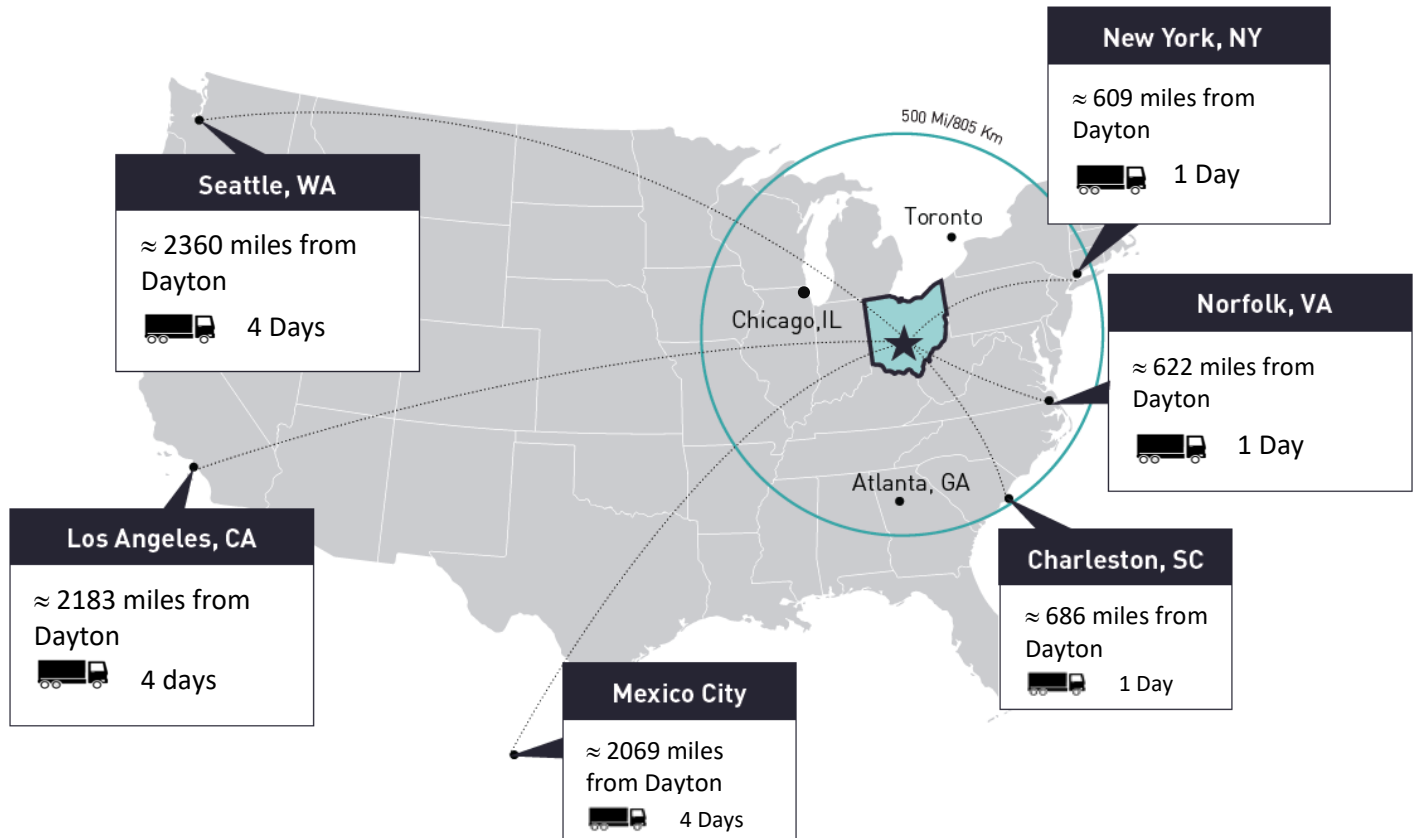
937-216-4511

bredick@brunsrealty.com



**9100 Dog Leg Road
Dayton, Ohio 45414**

Market Access



**For more detailed information about this property visit
www.brunsrealty.com or call Ben at 937-216-4511**

Ben Redick

937-216-4511

bredick@brunsrealty.com