

For Lease

Medical Office

303 Jungermann Rd., Ste. B
Saint Peters, MO 63376



- 1,166 SF Available for Lease
- Former Dental Office
- Reception area and waiting room
- One dry office
- One storage room
- Three (3) operatory rooms with water and airlines in the floor that can easily be capped for dry offices
- Lease Rate: \$20.00 PSF, MG

Danny Wapelhorst

Vice President

Phone: (636) 970-0330

dannyw@cissellmueller.com

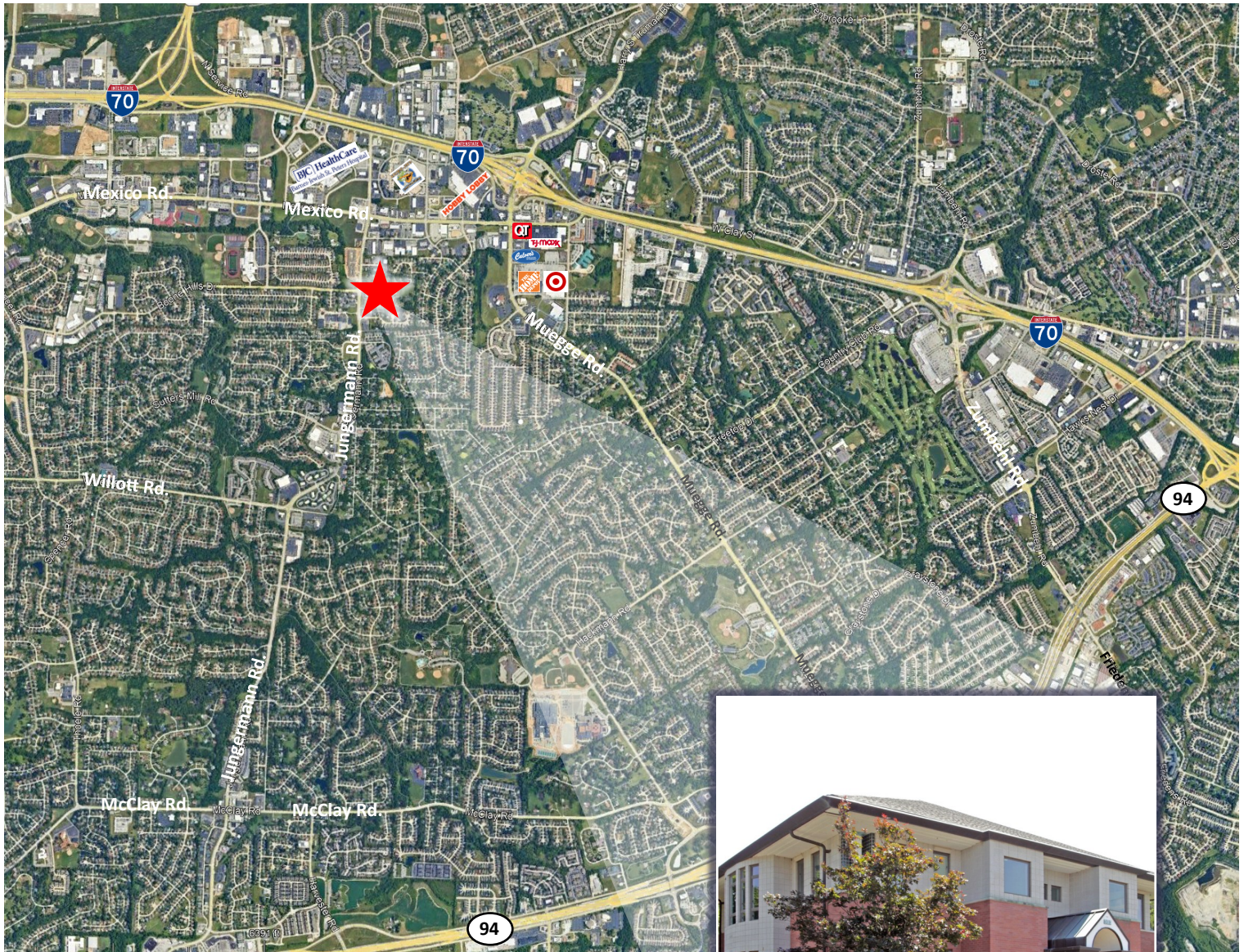


CISSELL MUELLER
COMPANY, L.L.C.

For Lease

Medical Office

303 Jungermann Rd., Ste. B
Saint Peters, MO 63376



Danny Wapelhorst

Vice President

Phone: (636) 970-0330

dannyw@cissellmueller.com



CISSELL MUELLER
COMPANY, L.L.C.