

2712 SOUTH 3600 WEST SUITES G, H & I

West Valley City, UT 84119



FLEX SUBLEASE | AVAILABLE NOW

4,410 RSF

HUGHESMARINO

BUILDING INFORMATION



ADDRESS

2712 South 3600 West
Suites G, H & I
West Valley City, UT 84119

AVAILABLE

Vacant

ASKING RATE

\$0.90/NNN

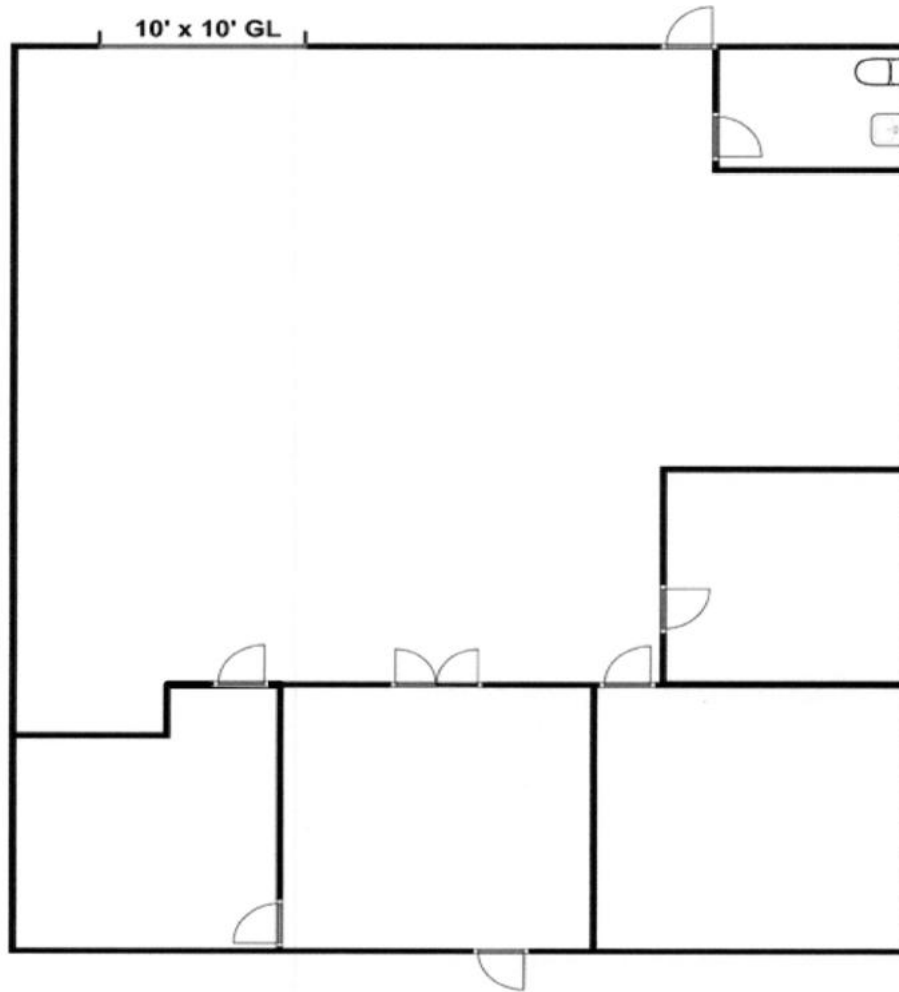
AVAILABLE THROUGH

February 28, 2027

KEY HIGHLIGHTS

- Located between I-215 and Bangerter Highway
- Less than 15 minutes to Downtown Salt Lake City
- Minutes away from Salt Lake City International Airport
- Close proximity to restaurants, shopping centers, and hotels

FLOOR PLAN



SPACE HIGHLIGHTS

- Multiple Private Offices
- Open Office Area
- 10' x 10' Grade-Level Door
- 100 Amps, 208 Volts Single Phase Power
- C-3 Zoning

2712 SOUTH 3600 WEST, SUITES G, H & I



2712 SOUTH 3600 WEST, SUITES G, H & I



CONTACT INFORMATION



JACOB CURTIS

jacob.curtis@hughesmarino.com

702.394.8989

Lic. #13863395-SA00

6985 UNION PARK CENTER, SUITE 650
COTTONWOOD HEIGHTS, UT 84047
801.981.2111 | hughesmarino.com

HUGHESMARINO
SLC, INC.