

2133 ARCH STREET

CENTER CITY PHILADELPHIA

IDEAL FOR
CREATIVE LAYOUT OR
TRADITIONAL OFFICE SPACE



EXCLUSIVELY
REPRESENTED BY
THE FLYNN COMPANY

MICHAEL GALLAGHER
MGALLAGHER@FLYNNCO.COM
215-561-6565 X 151

BRENDAN FLYNN, SIOR
BFLYNN@FLYNNCO.COM
215-561-6565 X 152

RYAN WREATH
RWREATH@FLYNNCO.COM
215-561-6565 X 156

The
Flynn
Company

13,522 SF TOTAL AVAILABLE - TURNKEY AVAILABILITY AVAILABLE FOR LEASE

PROPERTY HIGHLIGHTS



Well-capitalized ownership can build space per tenant's specifications



Recently renovated and expanded Building lobby



Minutes away from 30th Street Station and Suburban Station providing access to Amtrak and SEPTA's regional rail



Ideal for creative layout or traditional office space



Atrium and exterior windows allow for ample natural light in each suite

THE FLYNN COMPANY

WWW.FLYNNCO.COM | 1621 WOOD STREET, PHILADELPHIA, PA 19103 | 215.561.6565



FLOOR SPACE AVAILABLE

2nd (FRONT) 2,478 RSF*

2nd (REAR) 3,195 RSF*

Can be leased together for total of 5,673 RSF

4TH (ENTIRE FLOOR) 7,849 RSF

HIGHLY ACCESSIBLE LOCATION IN LOGAN SQUARE

2133 ARCH STREET (marked with a yellow star)

Riverwalk: 2 high-rise towers featuring 711 luxury apartment residences, a 65,000 SF Giant Supermarket - Completed

Schuylkill Yards Development Project: featuring 6 million square feet of commercial, residential, retail and laboratory spaces - Approved

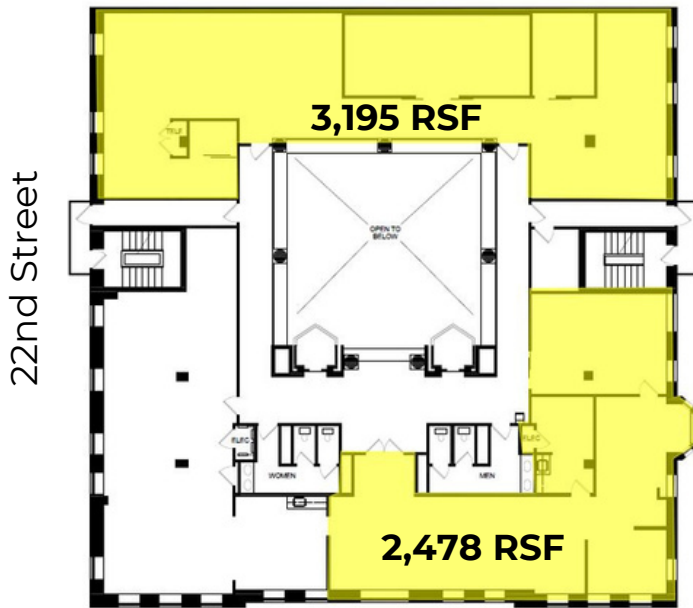
30th St Station: SEPTA, AMTRAK

305,000 SF Morgan Lewis Headquarters Building: Completed

2400 Market St: New Aramark Headquarters Building

Businesses and Services: Indego, The Franklin Institute, Moore College of Art & Design, The Academy of Natural Sciences, chima, CVS pharmacy, Starbucks, Dunkin', BB&T, Santander, Wells Fargo, Citizens Bank, FedEx Office, Trader Joe's, PECO, Schuylkill Banks, Fillet Club, Dunkin', Starbucks, Wawa.

2ND FLOOR - 5,673 SF

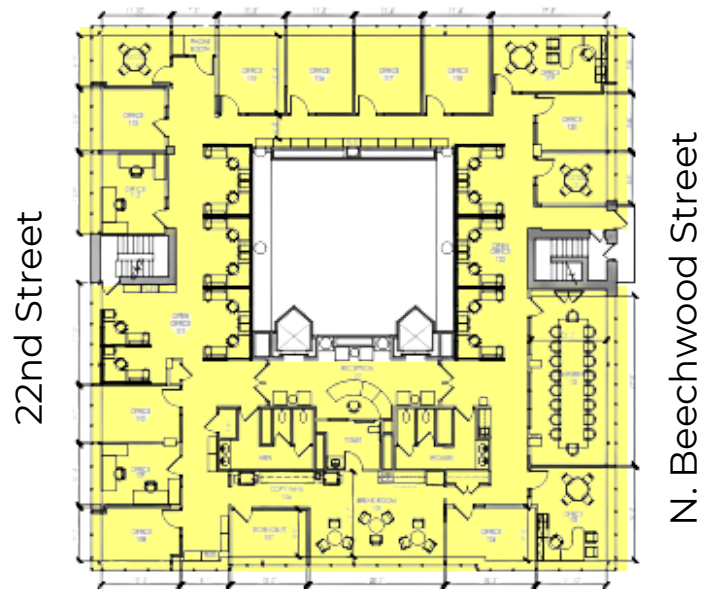


22nd Street

N. Beechwood Street

Arch Street

4TH FLOOR - 7,849 SF



22nd Street

N. Beechwood Street

Arch Street

For More Information Please Contact:

MICHAEL GALLAGHER
MGALLAGHER@FLYNNCO.COM
215-561-6565 X 151

BRENDAN FLYNN, SIOR
BFLYNN@FLYNNCO.COM
215-561-6565 X 152

RYAN WREATH
RWREATH@FLYNNCO.COM
215-561-6565 X 156