

ROSE PAWN HISTORIC RENOVATION



316 E 2nd St, Tulsa, OK 74120

Property Description

Historic renovation of the Rose Pawn Building. Landlord is permitting the building core/shell improvements and will coordinate tenant improvements in conjunction with core/shell work. Entire building is available for lease, first floor offers +/- 5,230 SF and second floor offers +/-5,334 SF.

Property Highlights

- Owner initiating full historic renovation of the Rose Pawn building. Owner will manage core/shell improvements and tenant build-out at the same time.
- Intent is to pass on the benefit of the historic tax credits to the new tenants.
- Asking rate is \$36.50/SF (Full-Service), includes cleaning. \$75.00/SF in TI allowance. Parking costs are outside of base rental rate.
- Parking solutions (for additional fee/cost) include American Parking managed lot to the west, parking at KC Auto Hotel, and parking in the Santa Fe Office parking garage.

Offering Summary

LEASE RATE:	\$36.50 SF/yr (Full Service)
NUMBER OF UNITS:	2
AVAILABLE SF:	5,230 to 5,334 SF

Demographics	1 Mile	3 Miles	5 Miles
TOTAL HOUSEHOLDS	3,390	30,814	68,906
TOTAL POPULATION	7,849	72,106	159,151
AVERAGE HH INCOME	\$85,440	\$77,924	\$77,097

Spaces	Lease Rate	Space Size
SUITE 101	\$36.50/SF	+/- 5,230 RSF
SUITE 201	\$36.50/SF	+/- 5,334 RSF

Jonathan Cowan, MBA, CCIM
PRINCIPAL
 918.728.9672
 jonathan@legacypadvisors.com

Jordan Helmerich, JD
VICE PRESIDENT - RETAIL & SPECIALTY USES
 918.688.0746
 jordan@legacypadvisors.com

Kase Anderson
ASSOCIATE
 580.761.6002
 kase@legacypadvisors.com



ROSE PAWN HISTORIC RENOVATION



Jonathan Cowan, MBA, CCIM
PRINCIPAL
 918.728.9672
 jonathan@legacypadvisors.com

Jordan Helmerich, JD
VICE PRESIDENT - RETAIL & SPECIALTY USES
 918.688.0746
 jordan@legacypadvisors.com

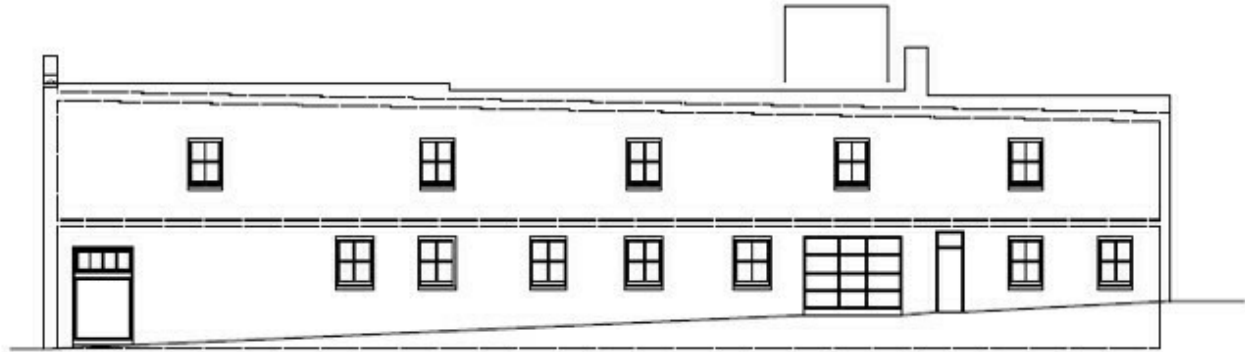
Kase Anderson
ASSOCIATE
 580.761.6002
 kase@legacypadvisors.com



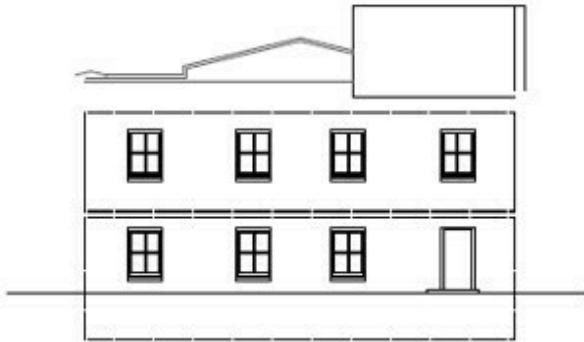
ROSE PAWN HISTORIC RENOVATION



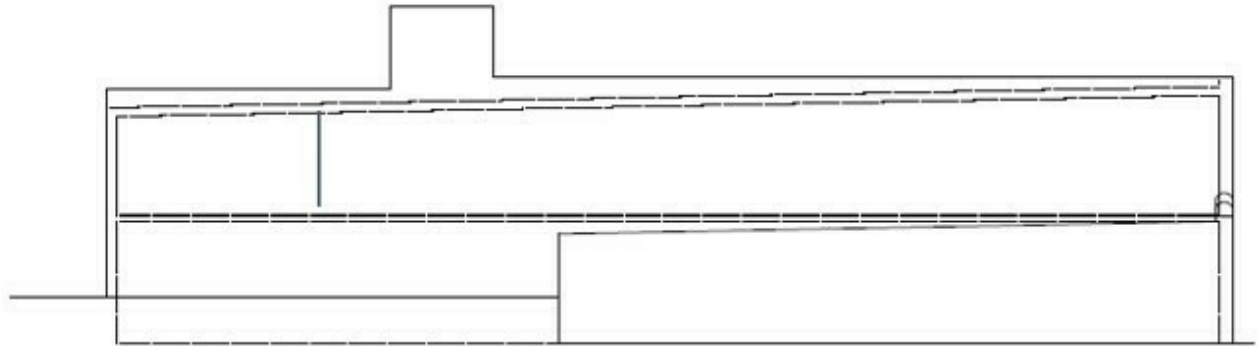
1 NORTH ELEVATION
ASB SCALE: 1/8"=1'-0"



2 WEST ELEVATION
ASB SCALE: 1/8"=1'-0"



3 SOUTH ELEVATION
ASB SCALE: 1/8"=1'-0"



4 EAST ELEVATION
ASB SCALE: 1/8"=1'-0"

FULL SCALE AT 22x34 | HALF SIZE REDUCTION

Jonathan Cowan, MBA, CCIM
PRINCIPAL
918.728.9672
jonathan@legacypadvisors.com

Jordan Helmerich, JD
VICE PRESIDENT - RETAIL & SPECIALTY USES
918.688.0746
jordan@legacypadvisors.com

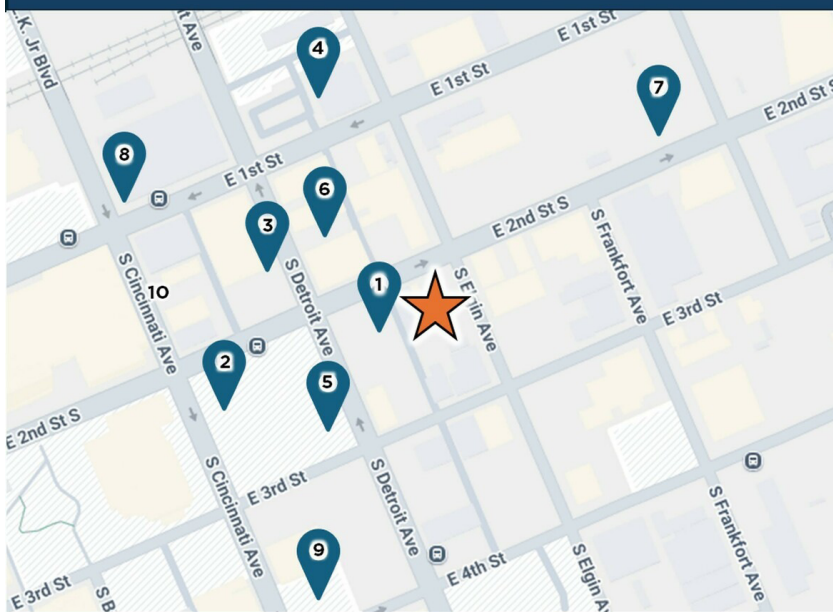
Kase Anderson
ASSOCIATE
580.761.6002
kase@legacypadvisors.com



ROSE PAWN HISTORIC RENOVATION



PARKING MAP - ROSE PAWN HISTORIC RENOVATION



1. American Parking - 304 E 2nd St
2. American Parking - 268 E 2nd St
3. American Parking - 114 S Detroit Ave
4. American Parking - 50 S Elgin Ave
5. American Parking - 260 S Detroit Ave
6. American Parking - 115 S Detroit Ave
7. Santa Fe Square Office Parking Garage - 414 E 2nd St (Covered)
8. City Hall Parking Garage - 223 E 1st St (Covered)
9. KC Auto Hotel Parking Garage - 313 S Cincinnati Ave (Covered)

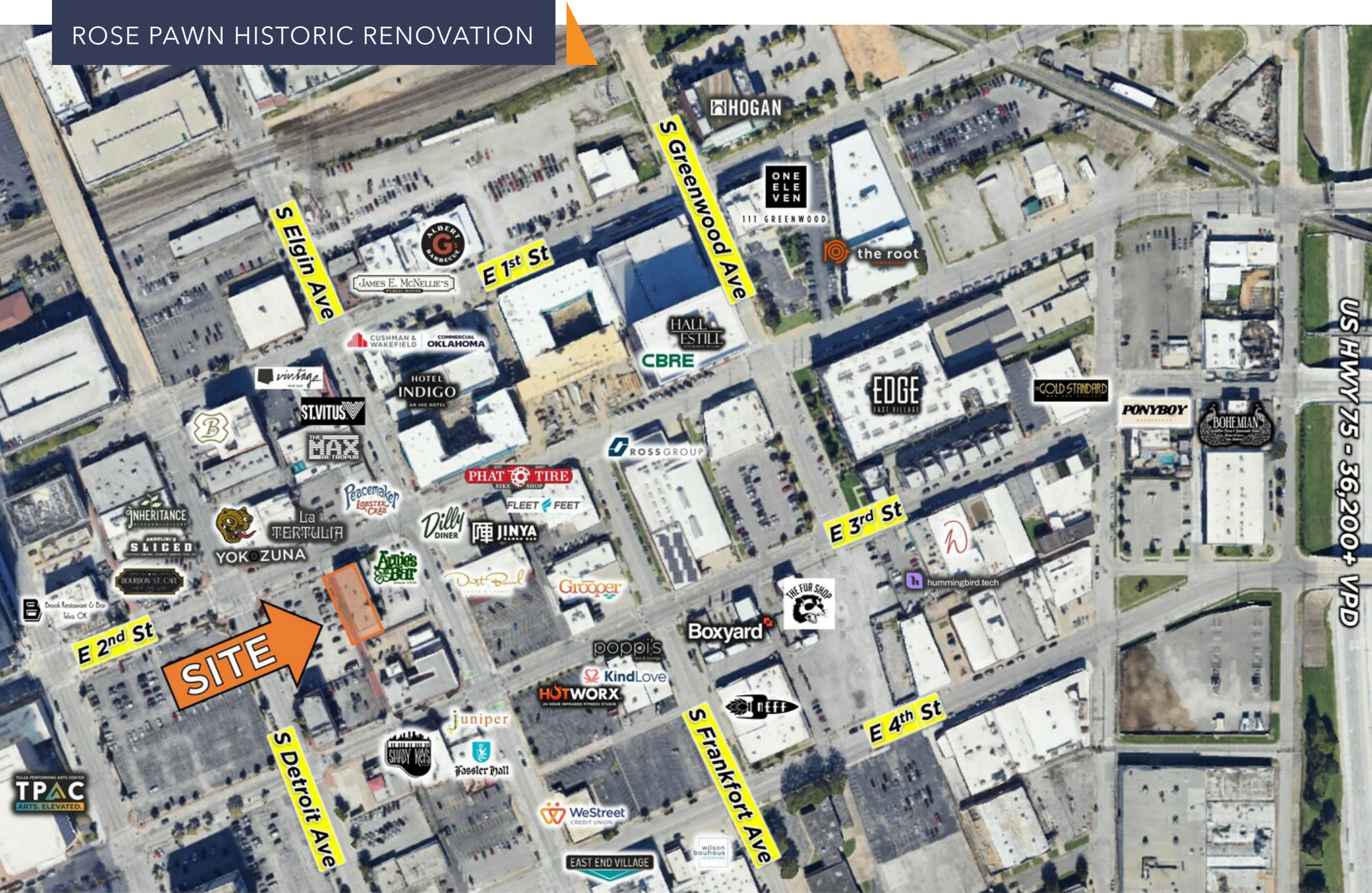
Jonathan Cowan, MBA, CCIM
PRINCIPAL
 918.728.9672
 jonathan@legacypadvisors.com

Jordan Helmerich, JD
VICE PRESIDENT - RETAIL & SPECIALTY USES
 918.688.0746
 jordan@legacypadvisors.com

Kase Anderson
ASSOCIATE
 580.761.6002
 kase@legacypadvisors.com



ROSE PAWN HISTORIC RENOVATION



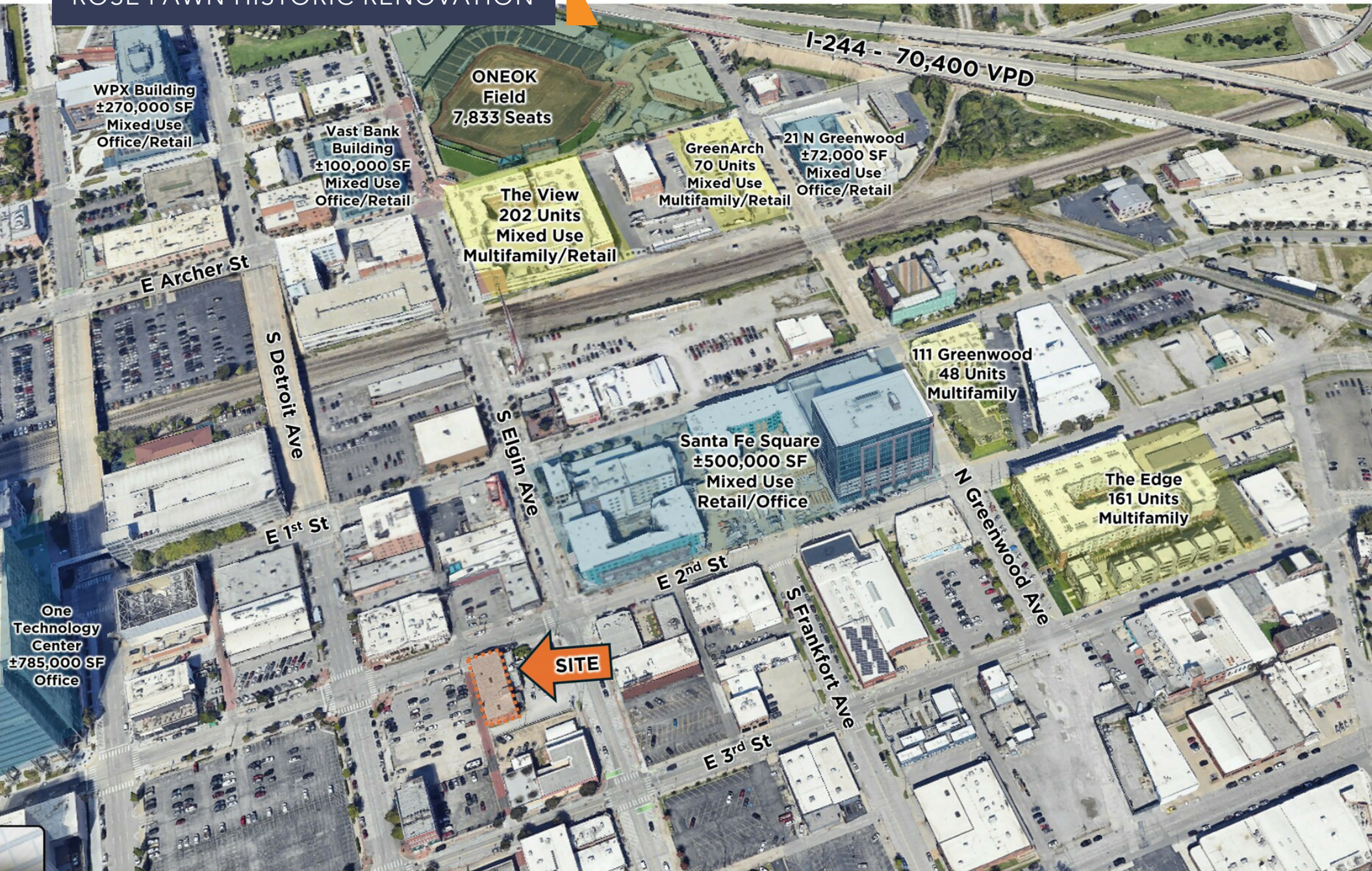
Jonathan Cowan, MBA, CCIM
PRINCIPAL
 918.728.9672
 jonathan@legacypadvisors.com

Jordan Helmerich, JD
VICE PRESIDENT - RETAIL & SPECIALTY USES
 918.688.0746
 jordan@legacypadvisors.com

Kase Anderson
ASSOCIATE
 580.761.6002
 kase@legacypadvisors.com



ROSE PAWN HISTORIC RENOVATION



Jonathan Cowan, MBA, CCIM
PRINCIPAL
 918.728.9672
 jonathan@legacypadvisors.com

Jordan Helmerich, JD
VICE PRESIDENT - RETAIL & SPECIALTY USES
 918.688.0746
 jordan@legacypadvisors.com

Kase Anderson
ASSOCIATE
 580.761.6002
 kase@legacypadvisors.com



ROSE PAWN HISTORIC RENOVATION *Urban Development Map*



Projects Completed from 2020-Current:

1. Reunion Building
2. Vast Bank Building
3. Holberton School
4. 111 Greenwood
5. Greenwood Rising
6. Cox Building Convention Center Expansion
7. OKPOP Museum
8. The View
9. 222 N Detroit
10. BMX HQ
11. Santa Fe Square Office Building
12. Bob Dylan Center
13. 21 N Greenwood
14. Santa Fe Square Apartments
15. Davenport Lofts
16. Veteran Affairs Hospital
17. Oklahoma Psychiatric Care



The View

Under Construction/Proposed:

18. OSU Medical Research Facility
19. The Annex
20. Western Supply
21. Arco Building
22. WPA Mixed Use Development
23. 36 Degrees North HQ
24. Sinclair Building



Santa Fe Square Conceptual Rendering



The Annex Conceptual Rendering

\$200+ MILLION
New Projects Completed in 2022

\$600+ MILLION
Pipelined Investment

\$1.56B
Invested Since 2010

Source: Downtown Tulsa Partnership - State of Downtown Tulsa 2023

Jonathan Cowan, MBA, CCIM
PRINCIPAL
918.728.9672
jonathan@legacypadvisors.com

Jordan Helmerich, JD
VICE PRESIDENT - RETAIL & SPECIALTY USES
918.688.0746
jordan@legacypadvisors.com

Kase Anderson
ASSOCIATE
580.761.6002
kase@legacypadvisors.com



©2025 Legacy Commercial Property Advisors. All rights reserved. This information has been obtained from sources believed reliable, but has not been verified for accuracy or completeness. You should conduct a careful, independent investigation of the property and verify all information. Any reliance on this information is solely at your own risk. Photos herein are the property of their respective owners. Use of these images without the express written consent of the owner are prohibited.

TULSA

QUALITY OF LIFE

PARKS & REC

6,553 acres

of maintained parkland in Tulsa

135 parks

in the City of Tulsa

57 miles

of walking trails, two skate parks, three dog parks, and five public swimming pools

227 sports fields

99 playgrounds, 94 tennis courts, 8 outdoor pickleball courts, 13 water playgrounds, 18 splash pads, 96 picnic shelters, 4 golf courses and 8 disc golf courses

Source: Parks, Culture and Recreation, City of Tulsa, 2023

FESTIVALS

Tulsa Mayfest

Over 125,000 annual attendees to the annual festival

Tokyo, OK

Over 300 hours of family-friendly anime entertainment

Tulsa Linde Oktoberfest

Named a Top Five Oktoberfest with over 200 taps of German and local beer and 140,000 SF of tents, stages and more

Harvest Beer Festival

Beers produced by over 20 breweries

Source: Oklahoma Tourism & Recreation, 2023

Source: Tulsa Oktoberfest, Inc., 2023

Source: USA Today, Conde Nast Traveler Magazine, Orbitz

SPORTS

Tulsa Oilers FC

Tulsa Tulsa

Drillers

University of Tulsa

Golden Hurricane

2022 PGA Championship

hosted at Southern Hills

Source: Parks, Culture and Recreation, City of Tulsa, 2023

FOOD & DRINK

16+ breweries

95+ food trucks

Home to

James Beard

nominated restaurants

Source: Tulsa Regional Tourism, 2023

Source: Tulsa Food Trucks, 2023



Jonathan Cowan, MBA, CCIM

PRINCIPAL

918.728.9672

jonathan@legacypadvisors.com

Jordan Helmerich, JD

VICE PRESIDENT - RETAIL & SPECIALTY USES

918.688.0746

jordan@legacypadvisors.com

Kase Anderson

ASSOCIATE

580.761.6002

kase@legacypadvisors.com



ROSE PAWN HISTORIC RENOVATION

#1 State with the Lowest Tax Burden
(Anderson Economic Group)

#1 Most Affordable Housing in the U.S.
(Rocket Homes, 2021)

MSA POPULATION:
1,010,000+ PEOPLE

#1 U.S. City Where Incomes are Growing the Fastest
(gobankingrates.com)

#2 Most Affordable Big City in the U.S.
(Rocket Homes 2021)

#1 Best Place for Women to Start a Business
(Thumbtack.com)

TULSA

#4 Most Affordable City in the U.S.
(American Home Shield, 2022)

#1 City for Growth and Inclusion
(Brookings Institute 2018)

#1 GDP for mid-sized MSA's
(Business Facilities, 2021)

The Best Destination to Visit
(CNN.com/travel, 2022)

#3 Best City for Remote Workers
(Forbes, 2021)

Top 15 Emerging Tech-Talent Cities in North America
(CBRE, 2021)

Jonathan Cowan, MBA, CCIM
PRINCIPAL
918.728.9672
jonathan@legacypadvisors.com

Jordan Helmerich, JD
VICE PRESIDENT - RETAIL & SPECIALTY USES
918.688.0746
jordan@legacypadvisors.com

Kase Anderson
ASSOCIATE
580.761.6002
kase@legacypadvisors.com

 **LEGACY**
COMMERCIAL PROPERTY ADVISORS