

WAREHOUSE + YARD FOR LEASE



 DRONE AERIALS OF PROPERTY

8540-8580 ELDER CREEK RD
SACRAMENTO, CA



CUSHMAN &
WAKEFIELD

8540-8580 ELDER CREEK RD SACRAMENTO, CA

PROPERTY FEATURES

Individual warehouse and yard spaces available for lease in South Sacramento. There are currently 2 non-contiguous vacant warehouse units with an additional $\pm 17,250$ SF of paved yard.

BUILDING 2	
Building Size:	10,343 SF
	SUITE G
Available SF:	2,108 SF
Loading Doors:	3 GL
Clear Height:	20'
Lease Rate:	\$2,530/mo MG

BUILDING 3	
Building Size:	11,413 SF
	SUITE K
Available SF:	1,947 SF
Loading Doors:	1 GL
Clear Height:	20'
Lease Rate:	\$2,335/mo MG

YARD SPACE 4	
Site Size:	17,250 SF
Lease Rate:	\$3,450/mo MG



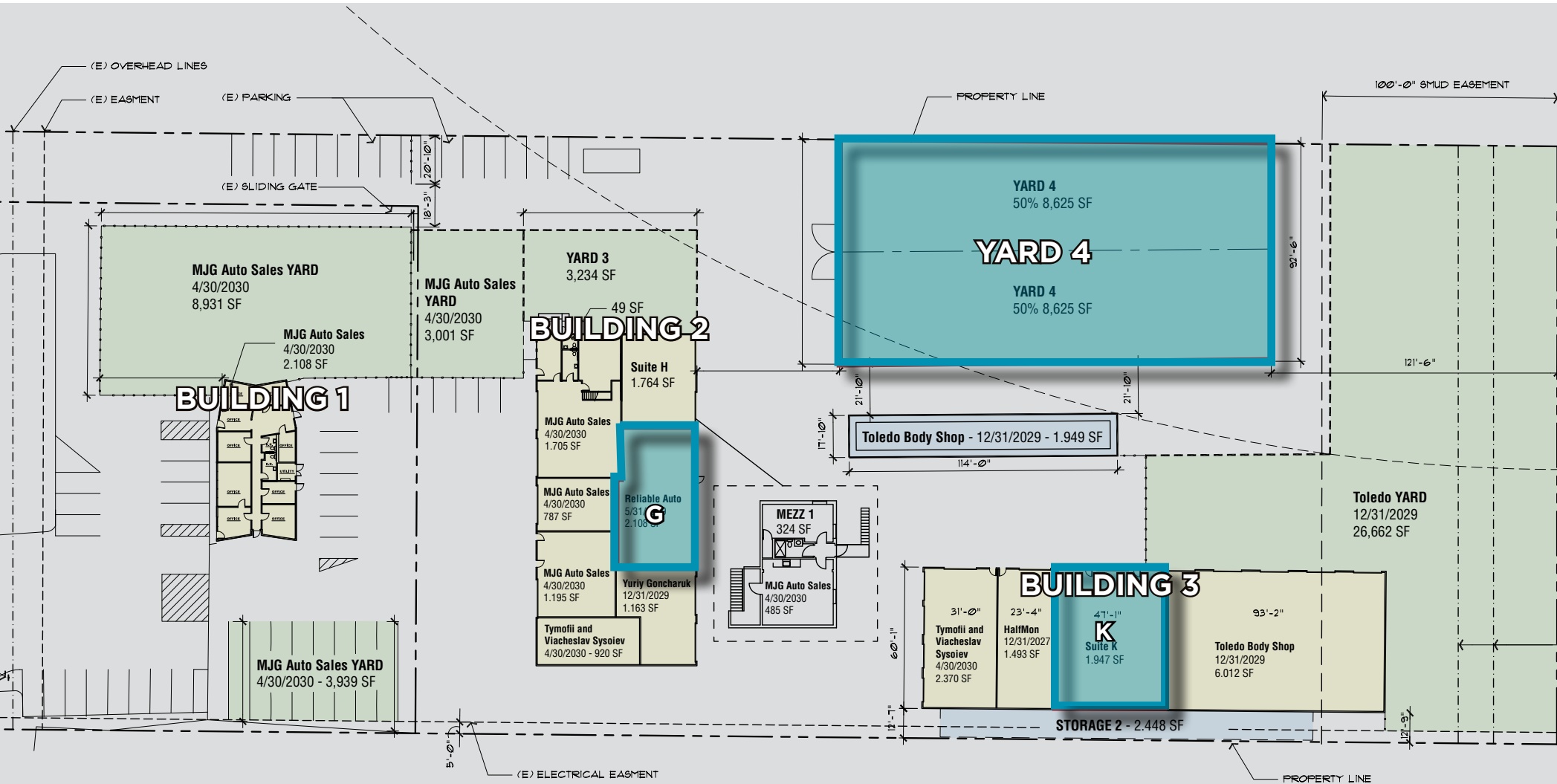
BUILDING 2



BUILDING 3

8540-8580 ELDER CREEK RD SACRAMENTO, CA

SITE PLAN

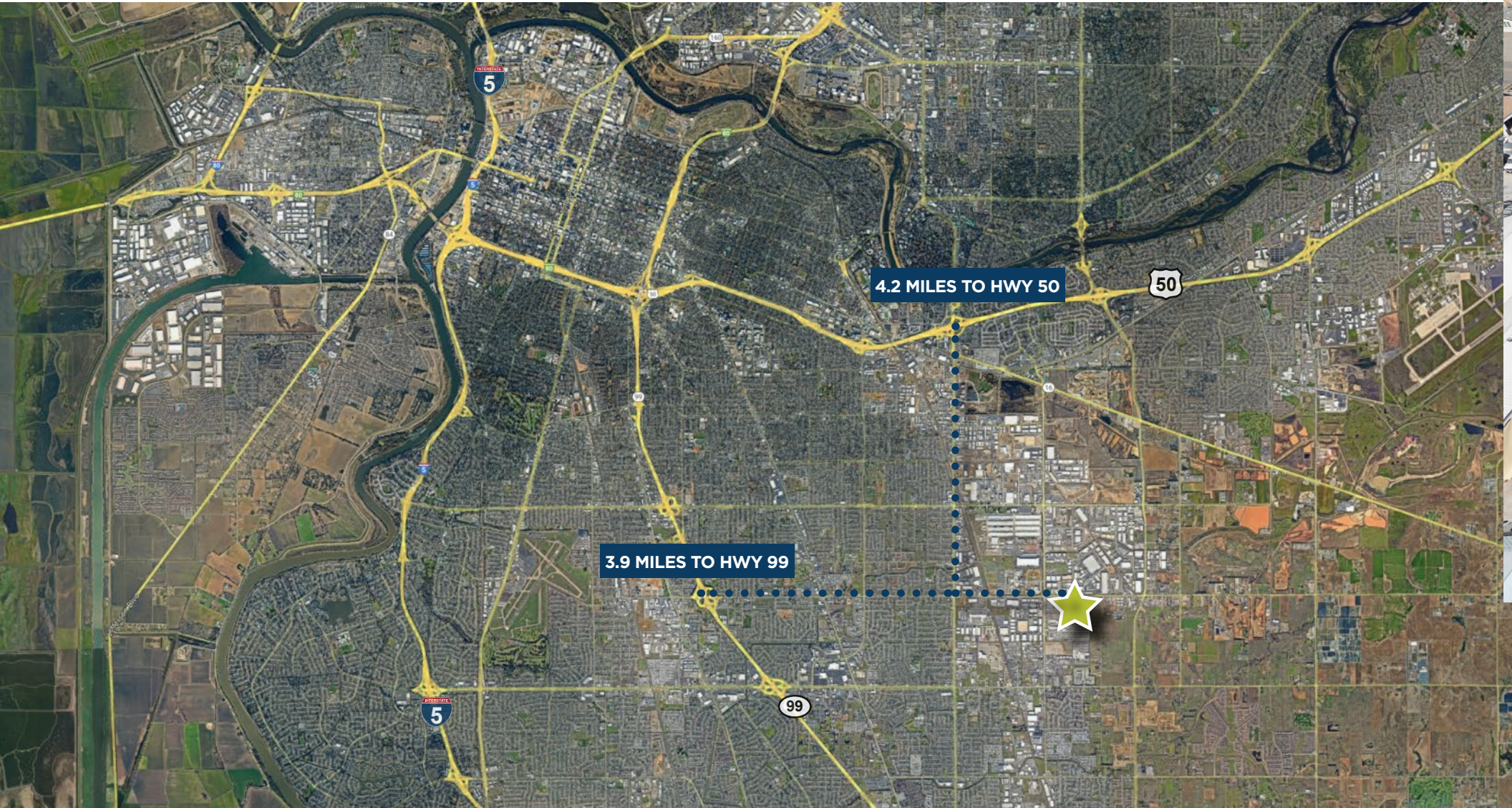


NOT TO SCALE. ALL DIMENSIONS ARE APPROXIMATE

8540-8580 ELDER CREEK RD

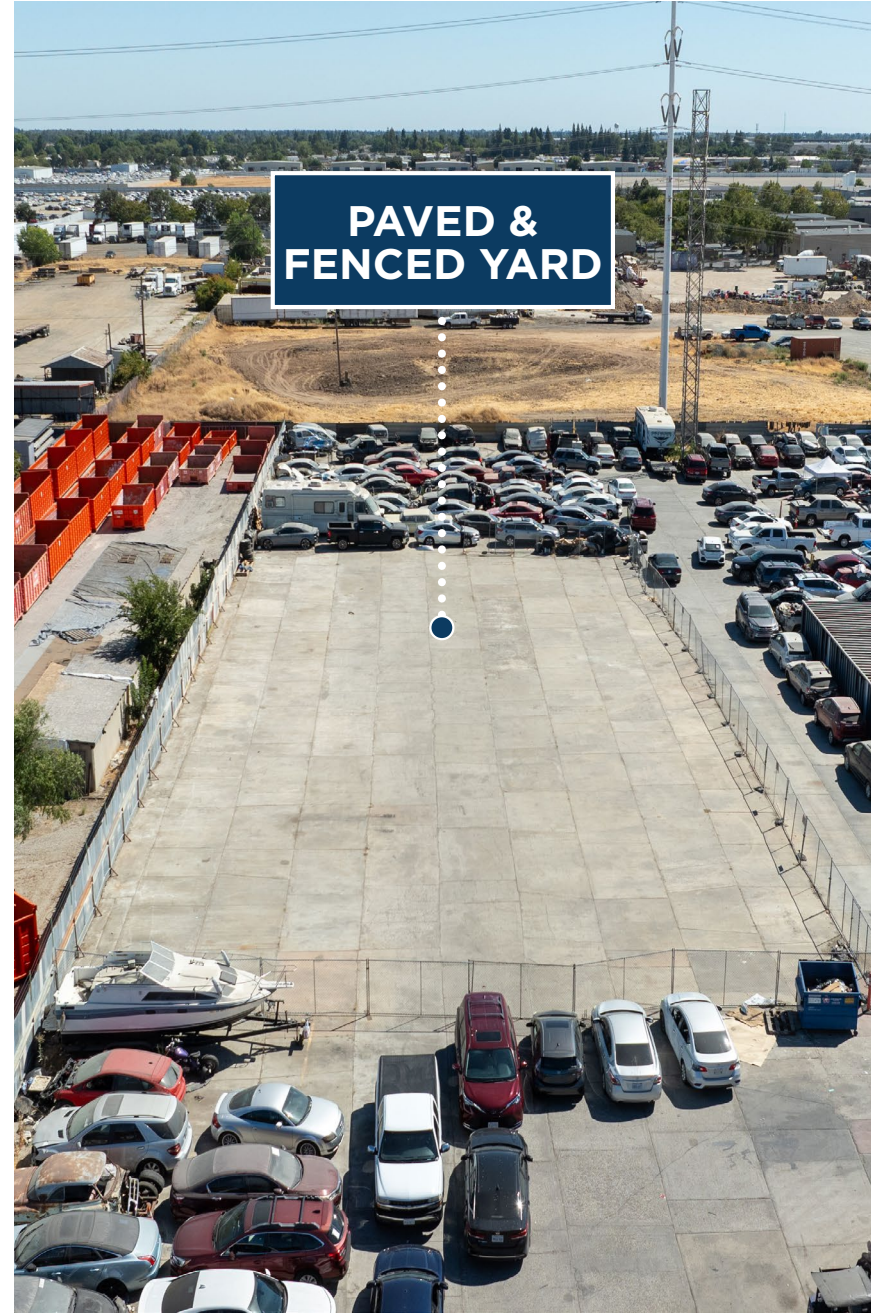
SACRAMENTO, CA

LOCATION MAP



8540-8580 ELDER CREEK RD
SACRAMENTO, CA

PROPERTY PHOTOS



PAVED & FENCED YARD



FOR MORE INFORMATION, CONTACT:

LENNY GOLD

Director
+1 916 288 4443
lenny.gold@cushwake.com
CA LIC# 02055534

CONNOR BELL

Senior Associate
+1 916 890 3615
connor.bell@cushwake.com
CA LIC# 02155224

©2024 Cushman & Wakefield. All rights reserved. The material in this presentation has been prepared solely for information purposes, and is strictly confidential. Any disclosure, use, copying or circulation of this presentation (or the information contained within it) is strictly prohibited, unless you have obtained Cushman & Wakefield's prior written consent. The views expressed in this presentation are the views of the author and do not necessarily reflect the views of Cushman & Wakefield. Neither this presentation nor any part of it shall form the basis of, or be relied upon in connection with any offer, or act as an inducement to enter into any contract or commitment whatsoever. NO REPRESENTATION OR WARRANTY IS GIVEN, EXPRESS OR IMPLIED, AS TO THE ACCURACY OF THE INFORMATION CONTAINED WITHIN THIS PRESENTATION, AND CUSHMAN & WAKEFIELD IS UNDER NO OBLIGATION TO SUBSEQUENTLY CORRECT IT IN THE EVENT OF ERRORS.

