

For Lease

# Medical Office in Downtown Reno



855 W. 7th St.  
Reno, NV 89503

**Michael Keating, SIOR**  
Partner  
775.386.9727  
mkeating@logicCRE.com  
S.0174942

**Chase Houston, SIOR**  
Senior Vice President  
775.848.6007  
chouston@logicCRE.com  
S.0174274

**Michael Dorn**  
Senior Associate  
775.453.4436  
mdorn@logicCRE.com  
S.0189635

# Listing Snapshot



**\$1.85 PSF**  
Lease Rate



**± 1,049 - 3,445 SF**  
Available Square Footage



**Full Service**  
Lease Type

## Property Highlights

- Multi-tenant medical office near Downtown Reno
- Hwy 80 visibility, ± 132,000 CPD
- Remodeled outdoor seating areas
- Parking: 4.8/1,000 SF
- PO zoning
- 1st floor space available
- Monument signage available

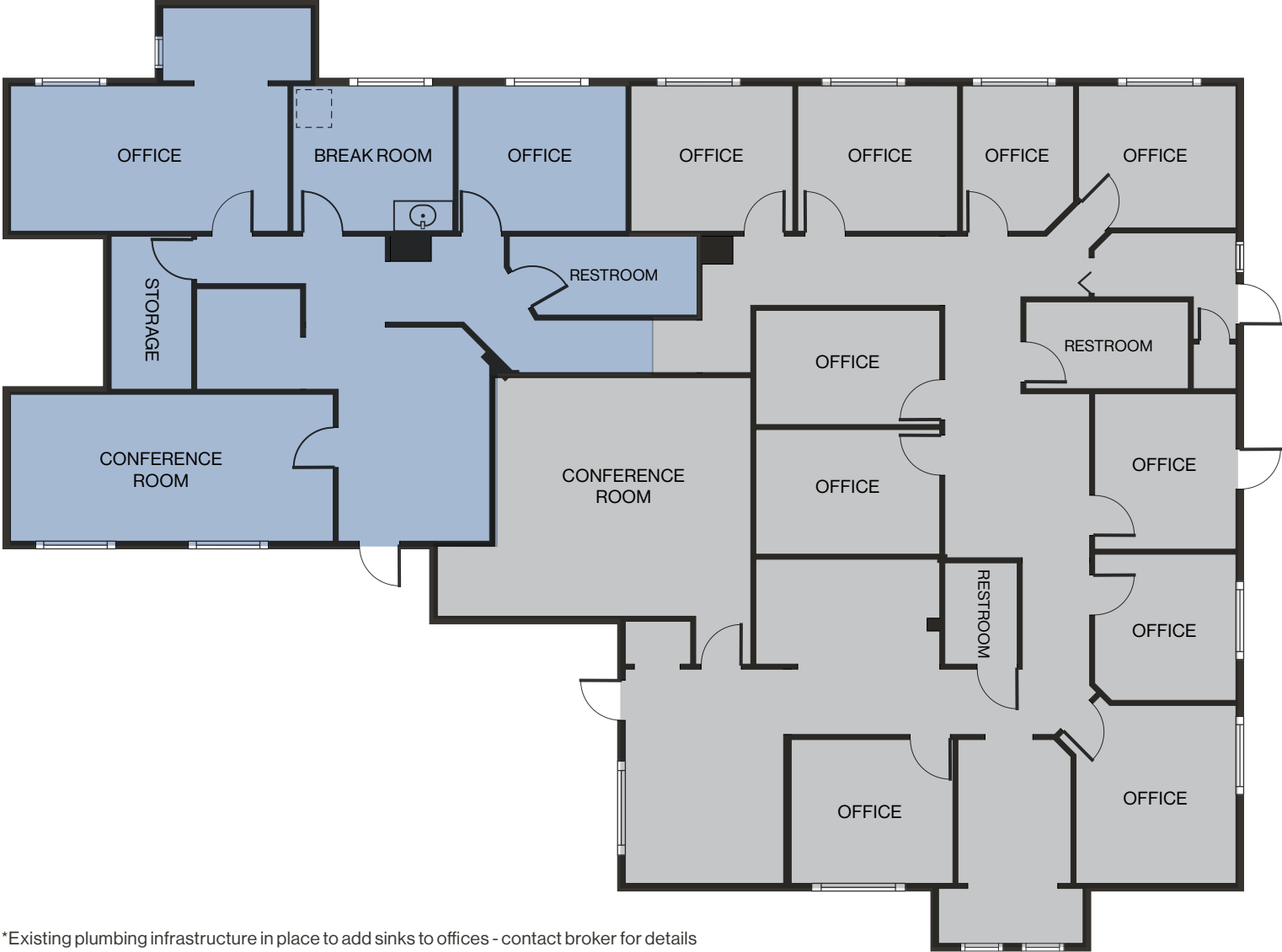
## Demographics

	1-mile	3-mile	5-mile
2023 Population	19,971	130,235	232,868
2023 Average Household Income	\$82,319	\$82,998	\$91,465
2023 Total Households	9,406	56,515	96,606



Floor Plan | Suite 160

Demising Option 1 ±1,049 SF    Demising Option 2 ±2,396 SF



\*Existing plumbing infrastructure in place to add sinks to offices - contact broker for details



Property Photos



# LOGIC Commercial Real Estate

## Specializing in Brokerage and Receivership Services



Join our email list and  
connect with us on LinkedIn

The information herein was obtained from sources deemed reliable; however LOGIC Commercial Real Estate makes no guarantees, warranties or representation as to the completeness or accuracy thereof.

For inquiries please reach out to our team.

**Michael Keating, SIOR**

Partner  
775.386.9727  
mkeating@logicCRE.com  
S.0174942

**Chase Houston, SIOR**

Senior Vice President  
775.848.6007  
chouston@logicCRE.com  
S.0174274

**Michael Dorn**

Senior Associate  
775.453.4436  
mdorn@logicCRE.com  
S.0189635