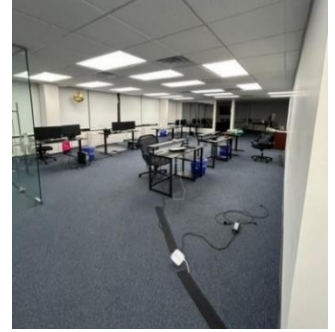
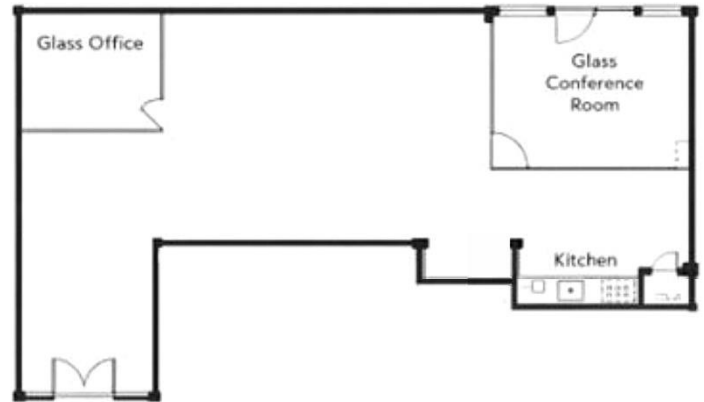


NOW SUB-LEASING

98 Cuttermill Rd, Suite 332, Great Neck, NY 11021



Suite 332 Available (2,000 SF) Immediate Occupancy

A turnkey third-floor sublet is now available in the highly sought-after office building THE ATRIUM, located at 98 Cutter Mill Road in the heart of Great Neck. This bright, efficient space is ideal for a wide range of professional users—such as law firms, accountants, financial services, tech, creative agencies, and other office tenants—though it is not suitable for medical use. The building features four elevators, ample on-site parking with several dedicated spaces, a kosher restaurant and separate snack bar on the first level, full-time 24/7 security, and a weekday doorman from 9 a.m. to 5 p.m. The Great Neck LIRR station is less than a mile away, and the neighborhood offers exceptional dining and amenities, including nearby favorites like Peter Luger, Gino's, and Colbeh, plus the many shops and services Great Neck is known for, along with its strong reputation for safety. Dime Bank is conveniently located on the main level, and the doorman oversees a designated UPS/FedEx pickup and drop-off area, making daily business operations seamless. Call today to arrange a tour of this outstanding office opportunity

Rental Rate: Upon Request

FOR FURTHER INFORMATION & INSPECTION, CONTACT

DIANA HAKIMI

Lic. RE Salesperson
S Sharf Realty Inc
516.417.4370
dianahakimi@sharfrealty.com

MICHAEL AZIZI

Lic. RE Salesperson
Brown Harris Stevens
516.244.5350
mazizi@bhsusa.com

Brown Harris Stevens Commercial Real Estate, LLC

585 Stewart Avenue, Suite 790, Garden City, New York 11530

Tel 516.203.8100 Fax 516.203.8199 Website www.BHScommercial.com

The foregoing is based on information obtained by BHS and believed to be reliable but no guarantee is made to its accuracy. No guarantee whatsoever is made as to the timing, amount or certainty of any sales projections or investor returns, which will depend on market conditions, project expenses, sales prices and other variables not presently ascertainable.