

# POLLOCK

Commercial Real Estate

# CARRIAGE WORKS

512, 530 & 590 MEANS STREET

# Carriage Works

Current Property Availability

[carriageworksatlanta.com](http://carriageworksatlanta.com)





# Industrial Character, Innovative History

Carriage Works blends history and modern functionality in the heart of West Midtown. Originally built in 1900, this revitalized property maintains its industrial charm with raw material finishes, high ceilings, and abundant natural light. Listed on the National Register of Historic Places, it sits within a dynamic creative district, offering seamless access to dining, transit, and cultural landmarks.

## **This property boasts:**

- 5.61-acre site with multiple buildings
- 3 spaces per 1,000 SF, plus bike and scooter parking
- Less than 1.5 miles from I-75
- Bus stop nearby
- Steps from top restaurants, galleries, and Georgia Tech





# A Legacy of Innovation

The original place for makers and doers, Carriage Works has consistently remained home to Atlanta's creative workforce for over a century.

**1869**

## **Means Street Established**

Means Street was platted in 1869 by W. B. Bass as part of the McMillan Subdivision, and is named after Alexander Means.

**1900**

## **First Tenant in Operation**

512 Means Street was constructed for William R. Ware, an Atlanta furniture manufacturer, and the man behind Atlanta Spring and Bed Company. They remained the original 'tenant' of [the now] Carriage Works, in business from 1900-09.

**1903-13**

## **Atlanta Buggy Co. is Born**

Who Carriage Works is originally coined from, the Atlanta Buggy Co. manufactured buggies in the 530 building from 1903-13.

**1913-26**

## **A Place for Manufacturing**

Carriage Works has long stood as a place for makers. Between 1913-26, it served as home to Ware-Hatcher, Southern, and Fox Manufacturing Company. All fizzled out during the depression.

**1928-36**

## **Block Candy Co. Moves In**

Occupied from 1928-36 by the Block Candy Co., Atlanta's first confectionery manufacturer, started by the post-Civil War entrepreneur, Frank E. Block.

**1940**

## **590 Building Added**

Developed for Dux Mixture Hardware, 590 Means Street debuts in 1940. The Dux Mixture Hardware Company was a major mill supply house for Atlanta manufacturers.

**1951-85**

## **Mouchet Textiles Takes Over**

The project is purchased by the Mouchet Corporation, dealers in textile salvage, who occupy and manufacture here until the mid-1980s.

**1992**

## **The Official Namesake**

In 1992, the project was converted to commercial loft office space and placed on the National Register of Historic Places (512 + 530 buildings). Carriage Works is named.





# Property Overview

## Amenities

Fitness center (530 building)

Rooftop deck (512 building) with unobstructed 360° views of Midtown and Downtown.

## Neighborhood

West Midtown submarket of Atlanta

Convenient walkable access to surrounding residential units in the West Midtown district

Surrounded by an abundance of burgeoning art galleries and related creative venues

Adjacent to the Atlanta Contemporary Art Center

## Accessibility

3 per 1,000 square feet of parking for cars

Bicycle and scooter parking

Walking/biking distance to Georgia Tech

I-75 access less than 1.5 miles away

Bus stop connecting to North Station at the corner of Means Street and Marietta Street.





Carriage Works has long attracted an array of creative tenants due to its exposed brick and timber beams that create a nostalgic, industrial atmosphere.

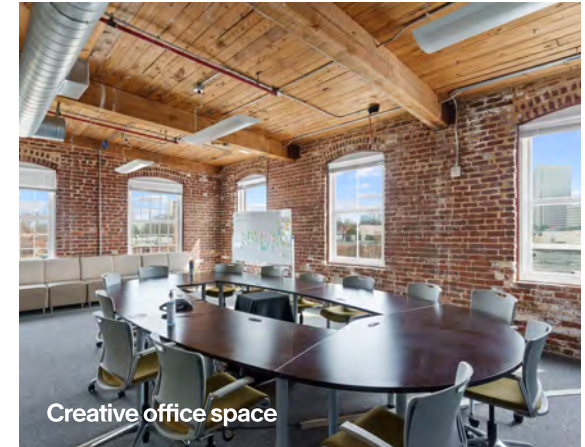
This prime West Midtown destination offers unmatched walkability to Atlanta's top dining, retail, and cultural hotspots, all while placing your business at the heart of a thriving community alongside innovators like Georgia Tech and other leading creative enterprises.



Exposed wood beams and brick interior



Beautiful natural light

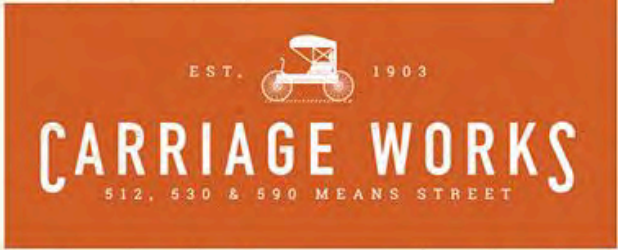


Creative office space



Shared gym with modern equipment





>2.0 MILES TO **M**

**M NORTH AVENUE OR MIDTOWN STATION**



**POLLOCK**

BUILT FOR INNOVATION  
EST. 1903  
**CARRIAGE WORKS**  
512, 530 & 590 MEANS STREET  
ATLANTA GEORGIA



# Contact Us

Carriage Works is a perfect place for businesses looking for a building with rich history to call home.

**JEFF POLLOCK**

CCIM, SIOR

JP@POLLOCKCOMMERCIAL.COM

404.662.2182

**KATIE SENTELL**

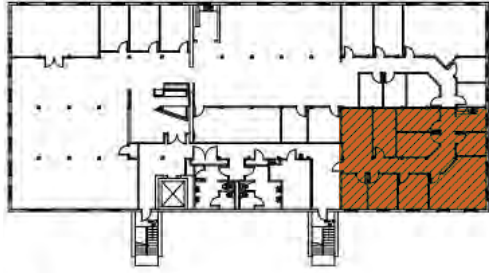
CCIM

KATIE@POLLOCKCOMMERCIAL.COM

404.596.8419

**CORFAC**  
INTERNATIONAL



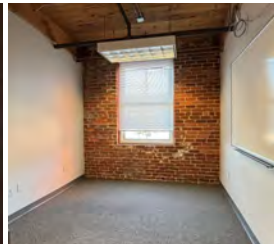
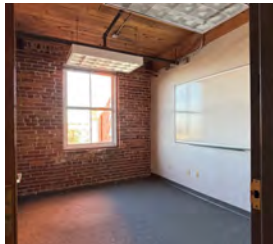
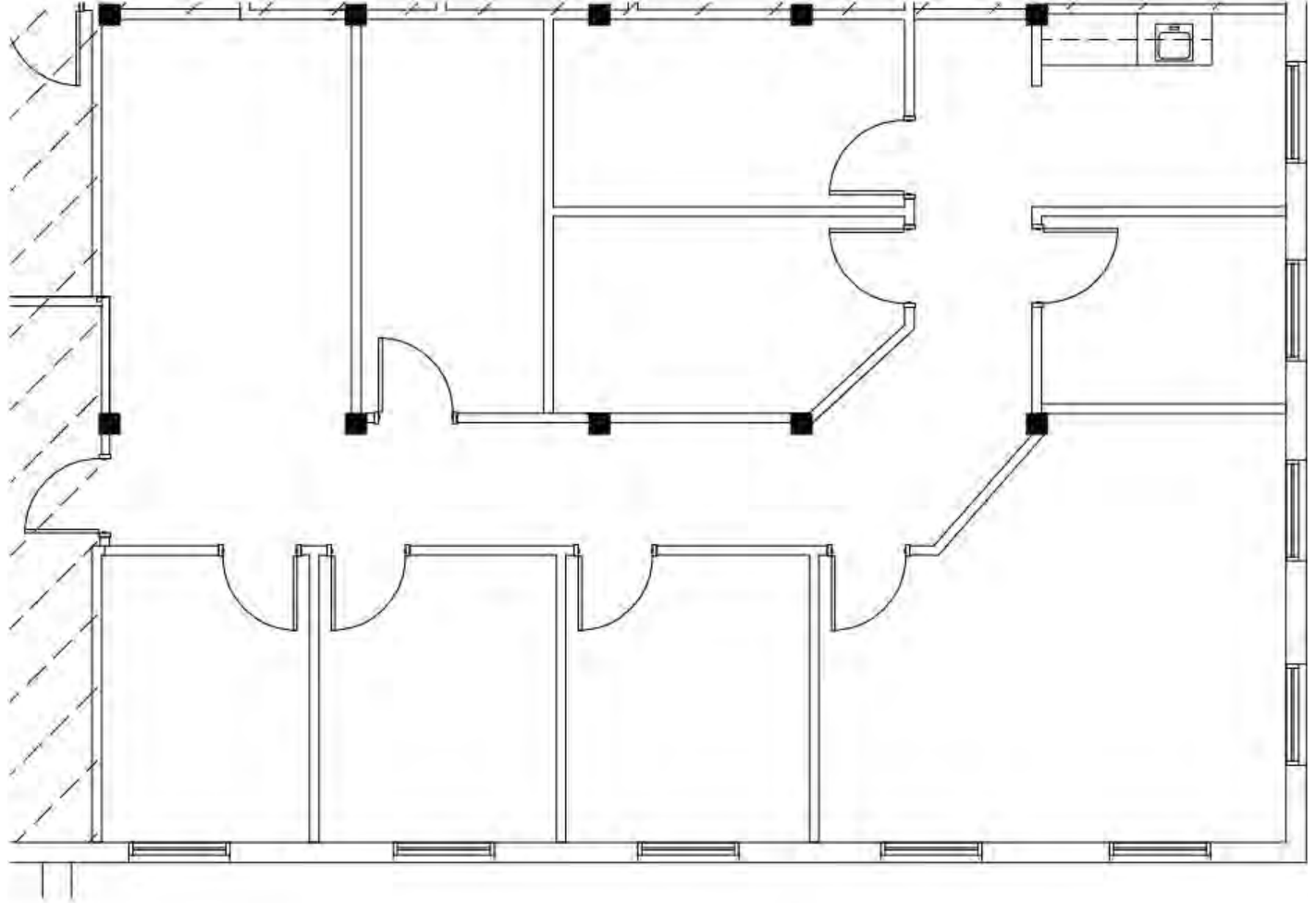


## Suite 402

±1,888 RSF

[VIEW DETAILED INFO](#)

[VIRTUAL TOUR](#)





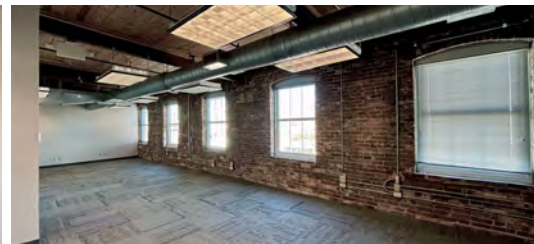
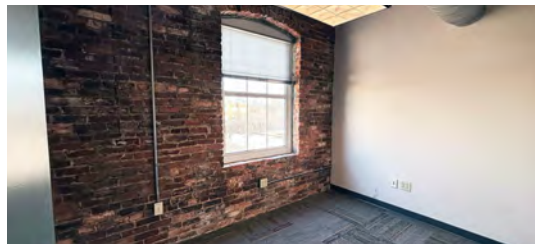
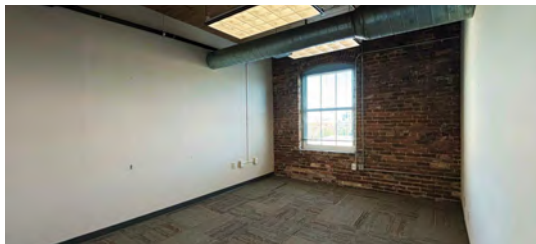
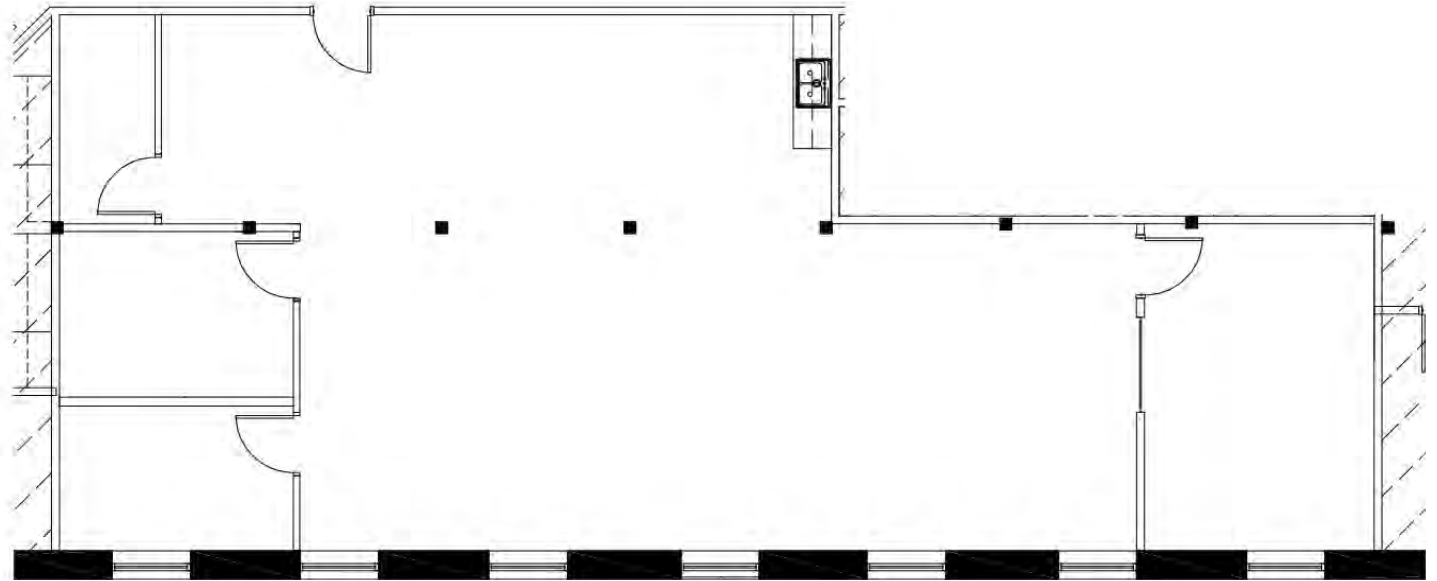


## Suite 410

±1,958 RSF

[VIEW DETAILED INFO](#)

[VIRTUAL TOUR](#)





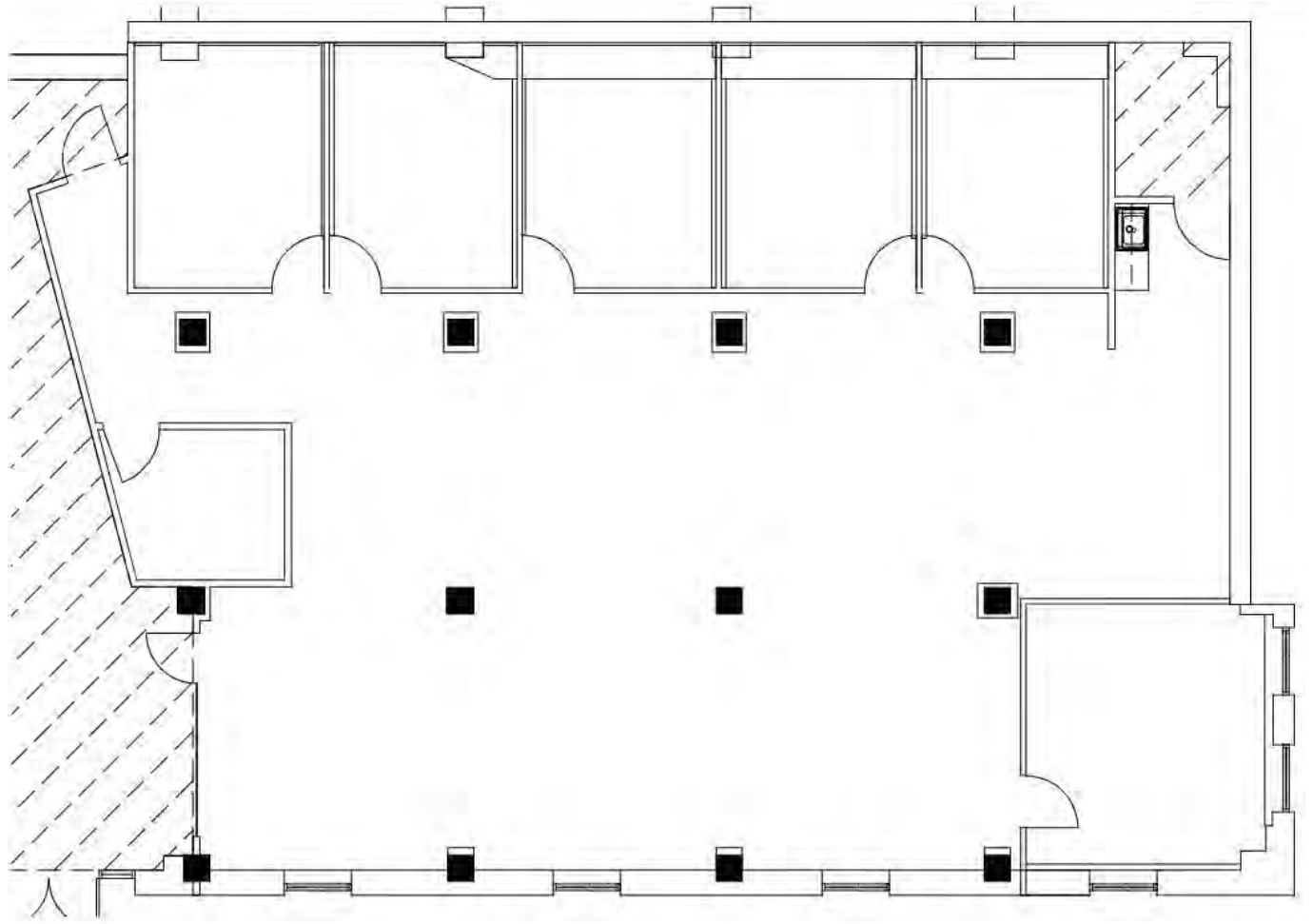


## Suite 100

±3,698 RSF

[VIEW DETAILED INFO](#)

[VIRTUAL TOUR](#)







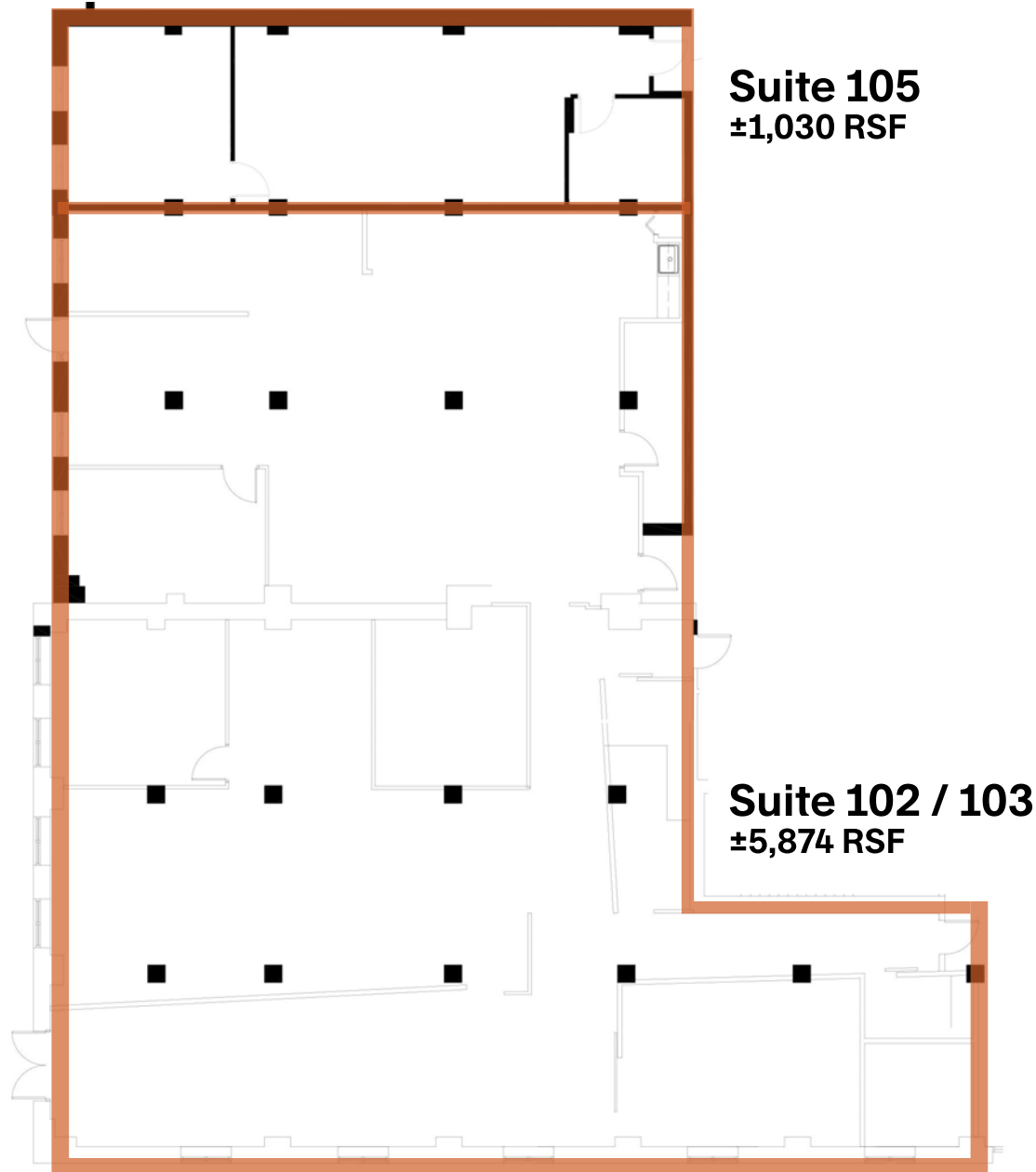
## Combined Suite 102 / 103 + 105

±6,904 RSF

\*Suites 102 / 103 + 105  
may be subdivided

[VIEW DETAILED INFO](#)

[VIRTUAL TOUR](#)







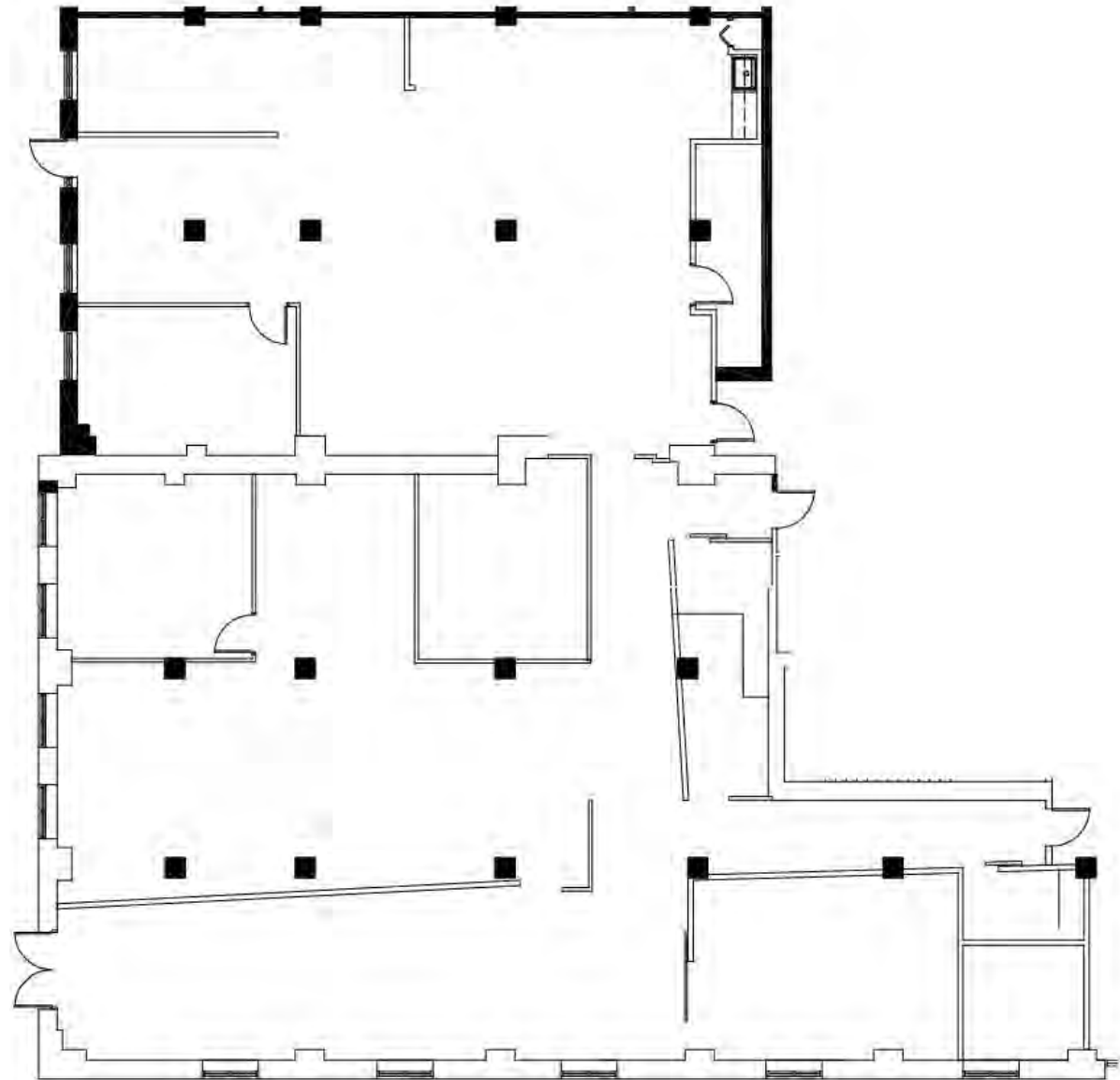
## Suite 102 / 103

**±5,874 RSF**

\*Suites 102 / 103 + 105  
may be combined for  
single-tenant use

[VIEW DETAILED INFO](#)

[VIRTUAL TOUR](#)







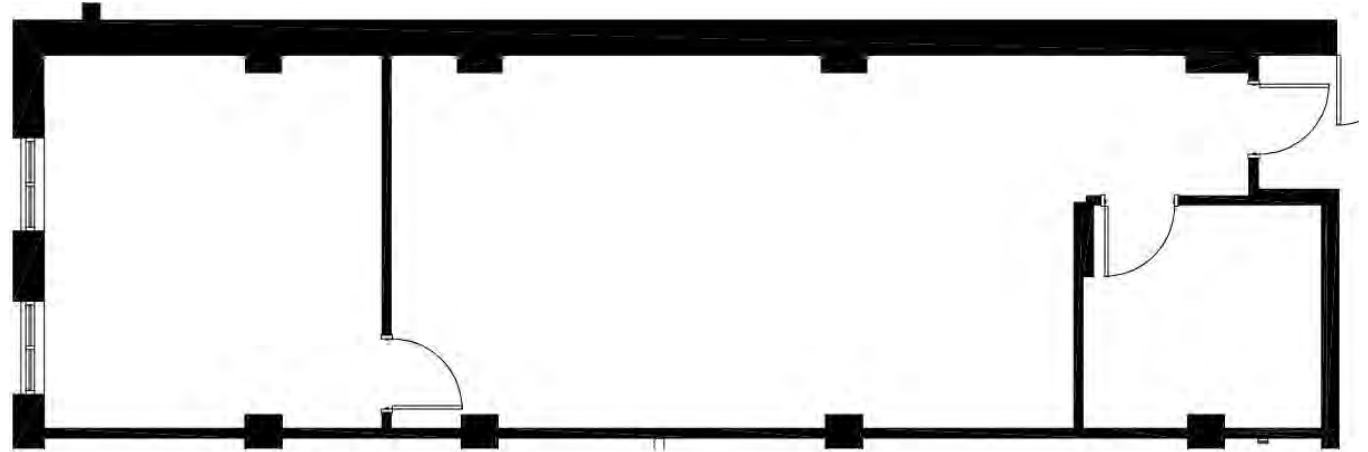
## Suite 105

**±1,030 RSF**

\*Suites 102 / 103 + 105  
may be combined for  
single-tenant use

[VIEW DETAILED INFO](#)

[VIRTUAL TOUR](#)







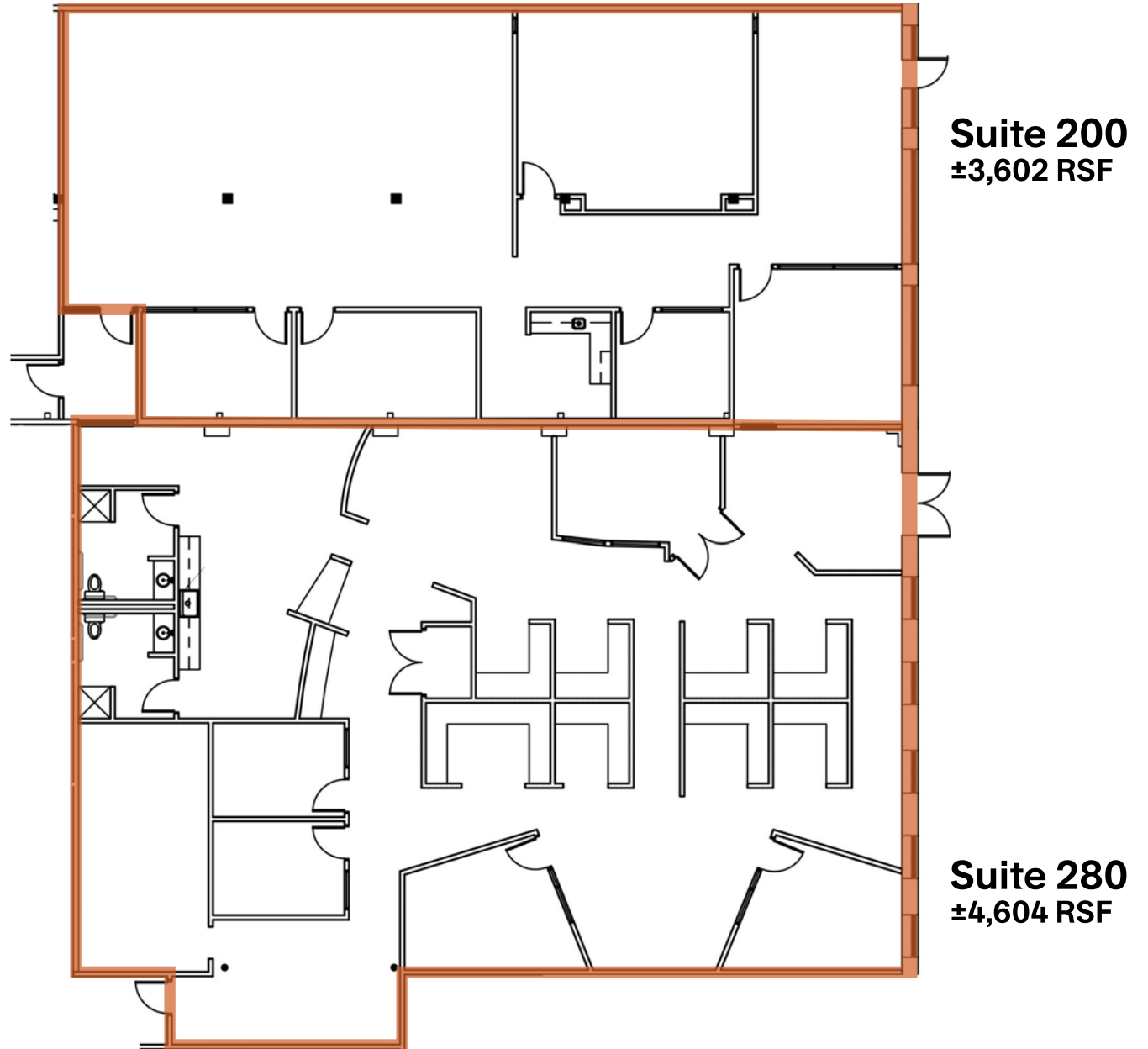
## Combined Suites 200 + 280

**±8,206 RSF**

*\*Suites 200 + 280 may  
be subdivided*

[VIEW DETAILED INFO](#)

[VIRTUAL TOUR](#)







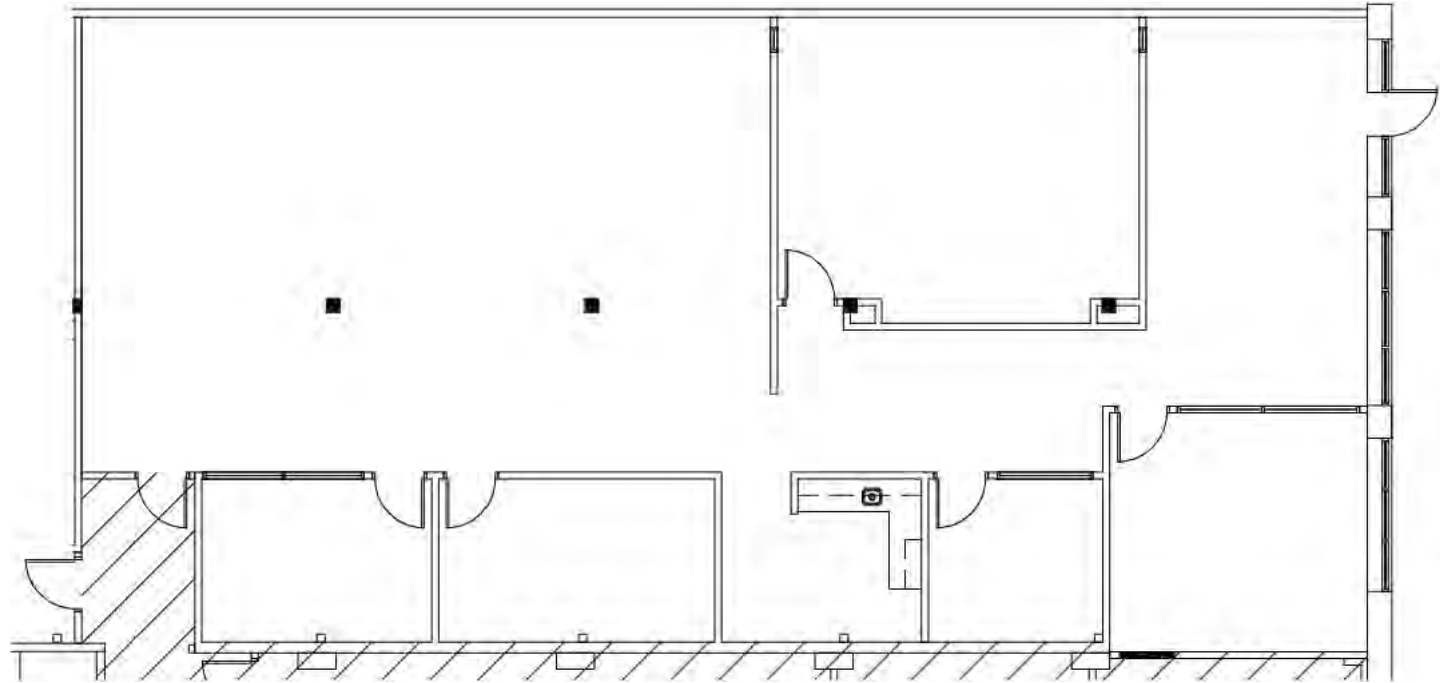
## Suite 200

±3,602 RSF

\*Suites 200 and 280 may be combined for single-tenant use

[VIEW DETAILED INFO](#)

[VIRTUAL TOUR](#)







## Suite 280

±4,604 RSF

\*Suites 200 and 280 may be combined for single-tenant use

[VIEW DETAILED INFO](#)

[VIRTUAL TOUR](#)

