

555 Flinthill Road

King of Prussia, PA

Key Facts

Property type	Industrial
Building size	112,500 SF
Space available	112,500 SF



Contact Us

Learn more about this property or schedule a tour by reaching out to our local investment and leasing officer.

Eli Gurwitz

+1 (267) 431-2495
eli.gurwitz@eqtpartners.com

555 Flinthill Road

King of Prussia, PA

BUILDING SPECIFICATIONS

Building Type: Industrial

112,500 SF Warehouse

+/-2,300 SF Office Space

32' Clear Height

6" Thick Unreinforced Warehouse Floor Slab

Solar Ready Roof

17 Dock Positions Equipped with 40,000 lb. Levelers

2 (12'x14') Drive-In Doors

TPO Roofing System

2,400 Amp Electrical Service

LED Lighting to Maintain 30 Average Footcandles

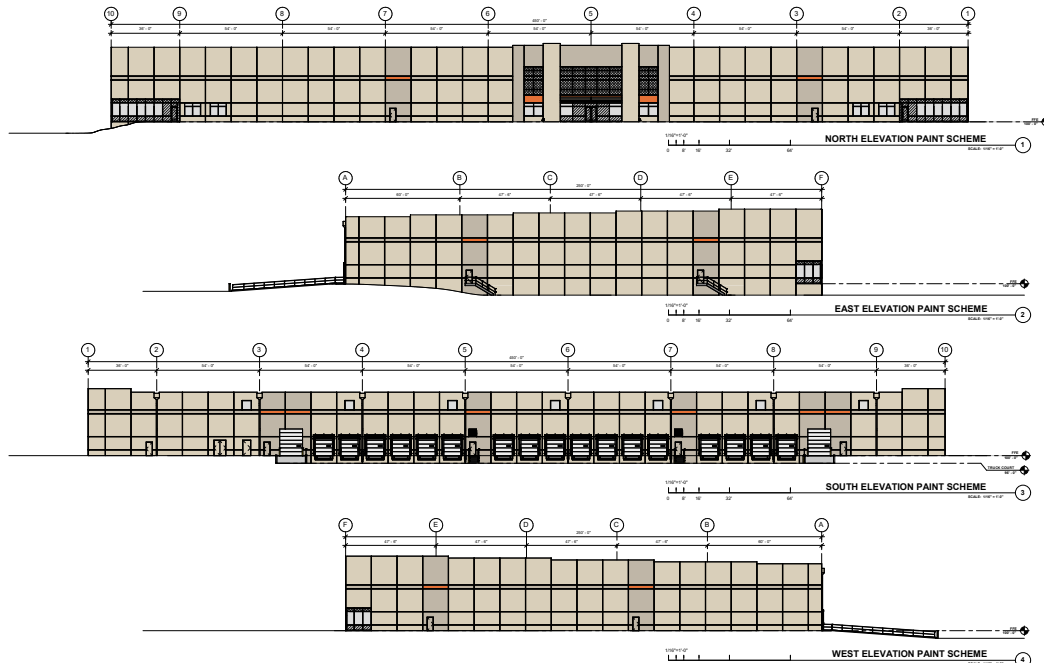
ESFR Sprinkler System

68 Auto Spaces

17 Trailer Parking Spaces

Current Zoning: Limited Industrial (Light)

Permitted Uses: Warehousing, Distribution,
Manufacturing, Processing, Cold Storage



Contact Us

Learn more about this property or schedule a tour by reaching out to our local investment and leasing officer.

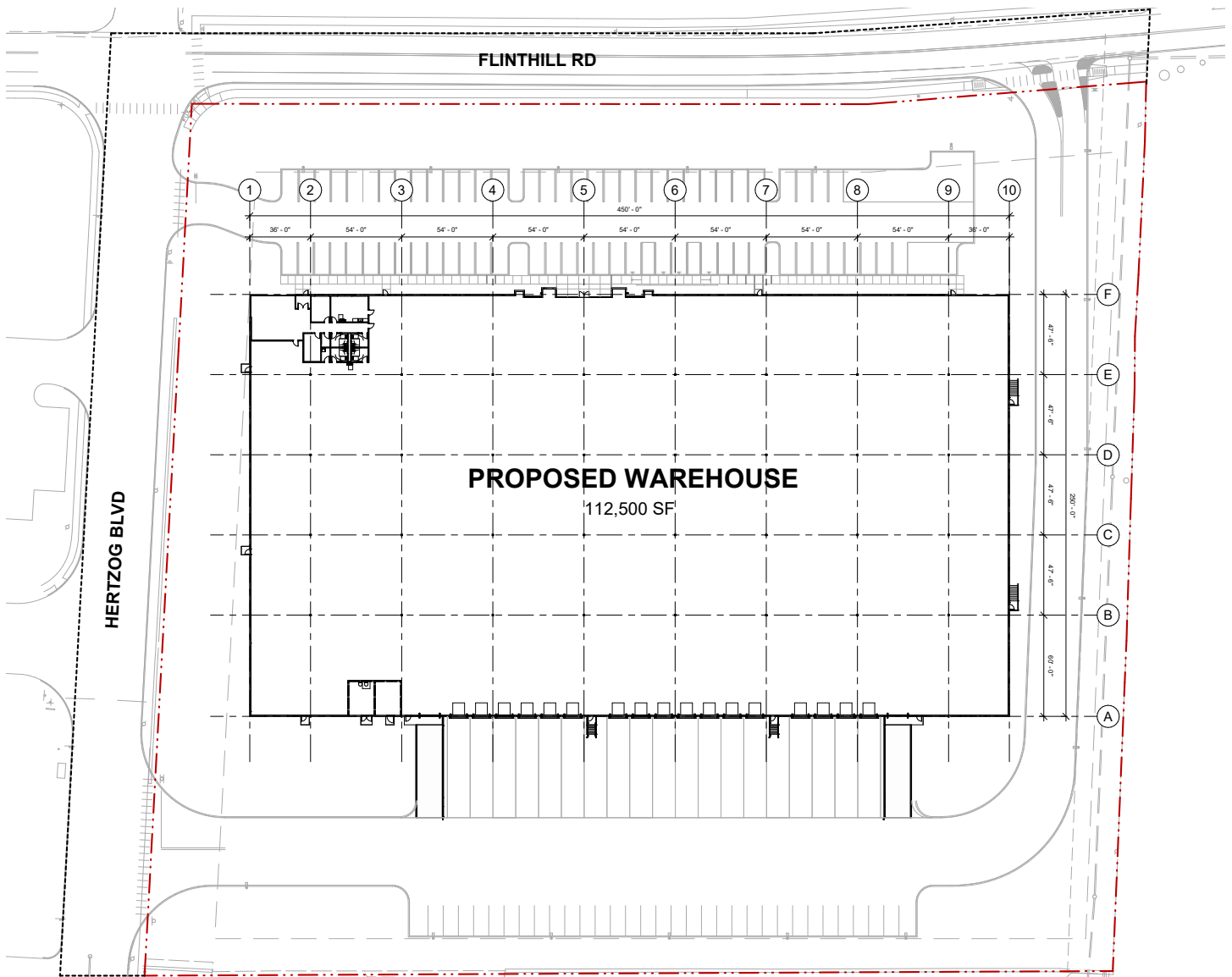
Eli Gurwitz

+1 (267) 431-2495
eli.gurwitz@eqtpartners.com

555 Flinthill Road

King of Prussia, PA

FLOOR PLAN



Contact Us

Learn more about this property or schedule a tour by reaching out to our local investment and leasing officer.

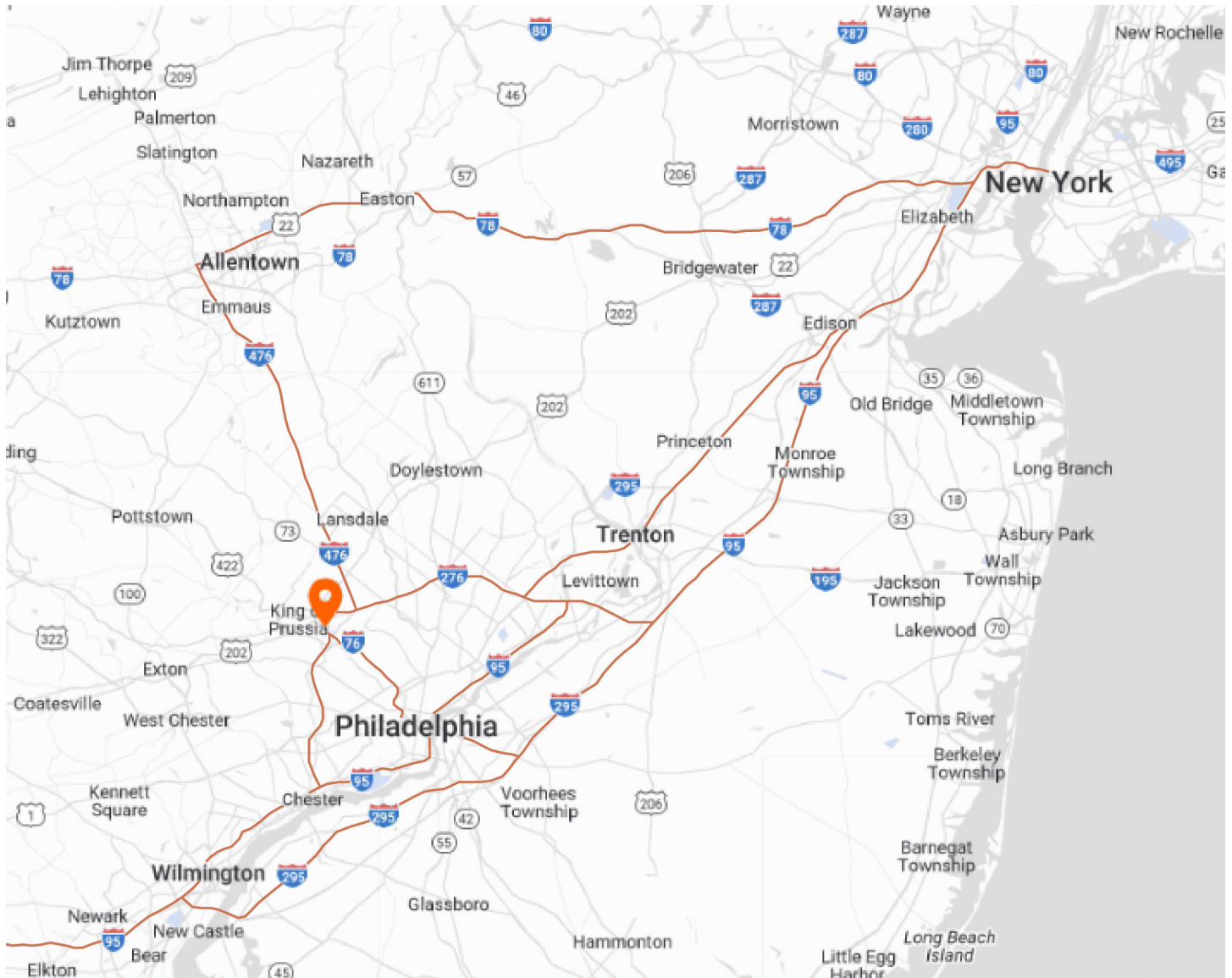
Eli Gurwitz

+1 (267) 431-2495
eli.gurwitz@eqtpartners.com

555 Flinthill Road

King of Prussia, PA

LOCATION



Contact Us

Learn more about this property or schedule a tour by reaching out to our local investment and leasing officer.

Eli Gurwitz

+1 (267) 431-2495
eli.gurwitz@eqtpartners.com