

OFFICE SPACE FOR LEASE

9250 CYPRESS GREEN DR



PRIME LOCATION

Position your business for success in this spacious and professional office space located in the heart of Jacksonville. Enjoy easy access to major highways, public transit, and popular local amenities.

FEATURES

- Spacious layout
- High traffic count area
- Easy access to major roadways
- Close proximity to restaurants and shops
- Secure building access

PROPERTY DETAILS

SIZE

5,259 SQ. FT

TYPE

Commercial Office

AVAILABLE

Immediately

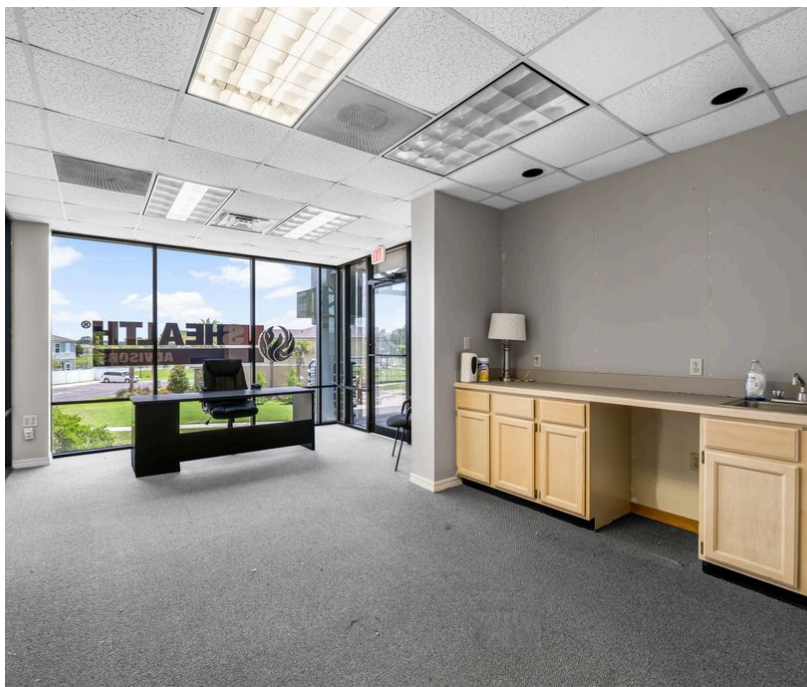
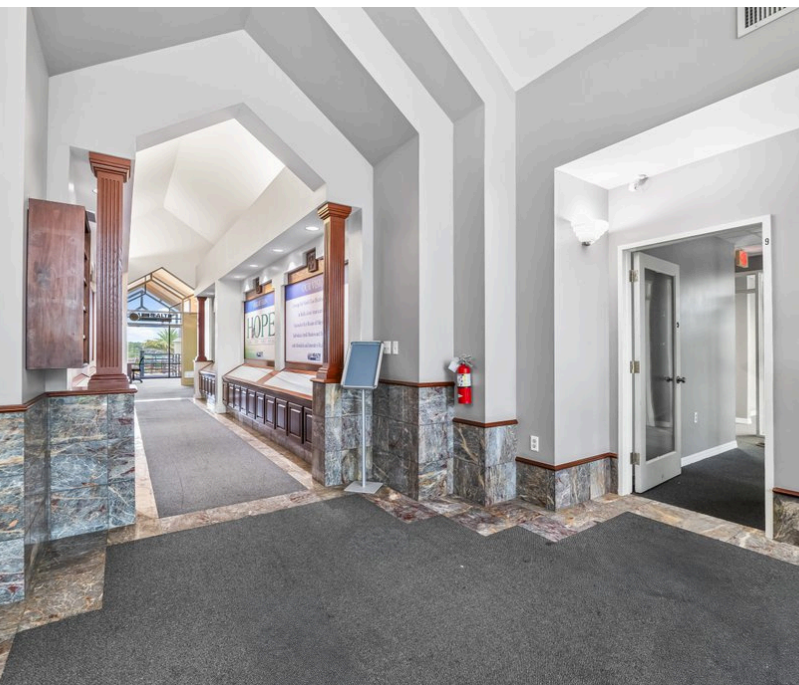
INTERNET ACCESS

High-Speed

PARKING

Dedicated Lot

Jordan Hooten, REALTOR® (904) 207-3456
jordanhooten321@gmail.com | www.kstrealestate.com



FLOOR PLAN LAYOUT

