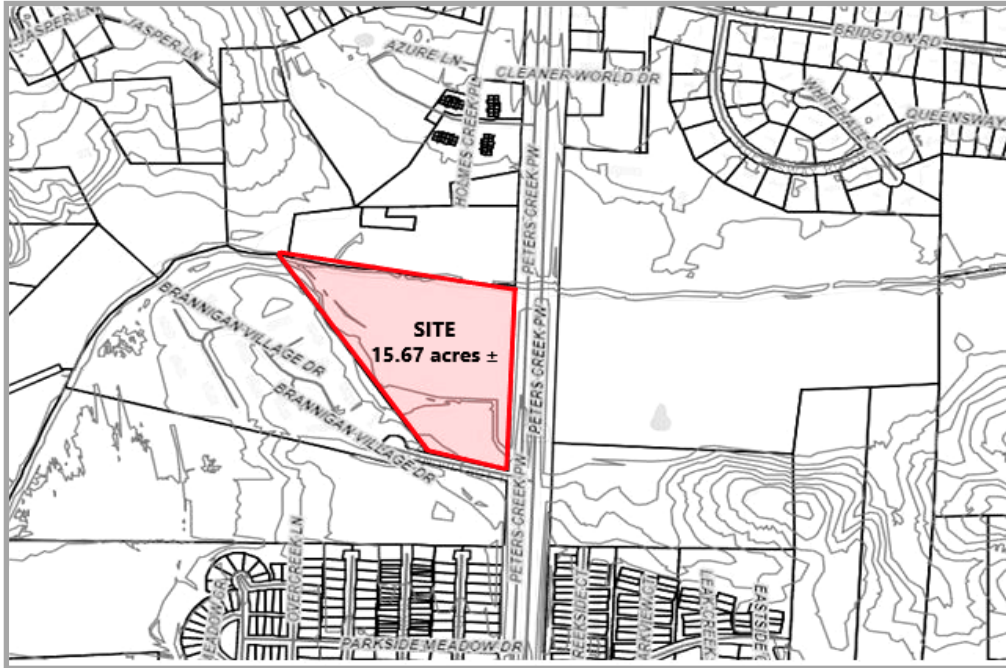


Peters Creek Parkway, Winston-Salem NC

15.67 ACRES ± OF LAND AVAILABLE



ADDRESS:

Peters Creek Parkway, Winston-Salem, NC 27127

South on Peters Creek Parkway (HWY 150 S) to intersection of Brannigan Village Drive– located across the street from Wilshire Golf Course

SUMMARY:

Potential commercial property (subject to rezoning) that contains 15.67 ± acres with excellent visibility along Peters Creek Parkway in Winston-Salem. Corner site on Peters Creek Parkway with median crossover.

LIST PRICE:

\$1,900,000.00

ACRES:

15.67 ±

ZONING:

RS-9 (Residential Single-Family District)

LOCATION HIGHLIGHTS

- Excellent visibility along Peters Creek Parkway
- Vacant, undeveloped land
- Approximately 13 acres ± is located in a flood plain. This additional land provides potential benefit to minimize or eliminate storm water retention.
- Approximately 2.4 acres ± graded corner site
- Tax Parcel: PIN 6822-66-5974 (Forsyth County)



HUBBARD COMMERCIAL, LLC

1598 WESTBROOK PLAZA DR, SUITE 200
WINSTON-SALEM, NC 27103
www.hubbardcommercial.com

BRUCE HUBBARD

336.733.1515 Office
bhubbard@hubbardcommercial.com

No warranty or representation is made to the accuracy of the information contained herein.
All Information is subject to change or withdrawal without notice No liability is assumed for any inaccuracy of any information.