

# PLYMOUTH COMMONS

2615-2643 EASTERN AVENUE, PLYMOUTH, WI 53073

RETAIL FOR LEASE



## OFFERING SUMMARY

**AVAILABLE:** 8,450 SF up to 89,199 SF

**LEASE RATE:** Negotiable

**TAX/CAM:** \$1.65 PSF/Yr

**BUILDING SIZE:** 164,036 SF

**LOT SIZE:** 16.53 Acres

## PROPERTY OVERVIEW

This retail center is anchored by the market-leading grocer Pick 'n Save and sees a high volume of traffic along Eastern Avenue and Hwy 57. Eastern Avenue is a major artery that runs through Plymouth. Average Household Income w/in 1-mile radius is over \$68,500.

Plymouth, WI is the second largest community in Sheboygan County with several of the county's major employers within 15 miles of Plymouth Commons such as Nemak, Kohler Co., Bemis Manufacturing, Sargento Foods, Aurora Surgery Center, and Sartori Cheese.

## PROPERTY HIGHLIGHTS

- Great visibility along Eastern Avenue and Hwy 57
- Flexible space options from 1,490 to 75,474 SF
- Potential development of out-lots



**AMK PROPERTIES TEAM**  
Suntide Commercial Realty  
2550 University Avenue W. #305-S  
St. Paul, MN 55114  
651-603-0321

**MATTHEW KLEIN, CCIM**  
Senior Vice President, Principal  
(612) 382-3403  
mklein@suntide.com  
20186454, Minnesota

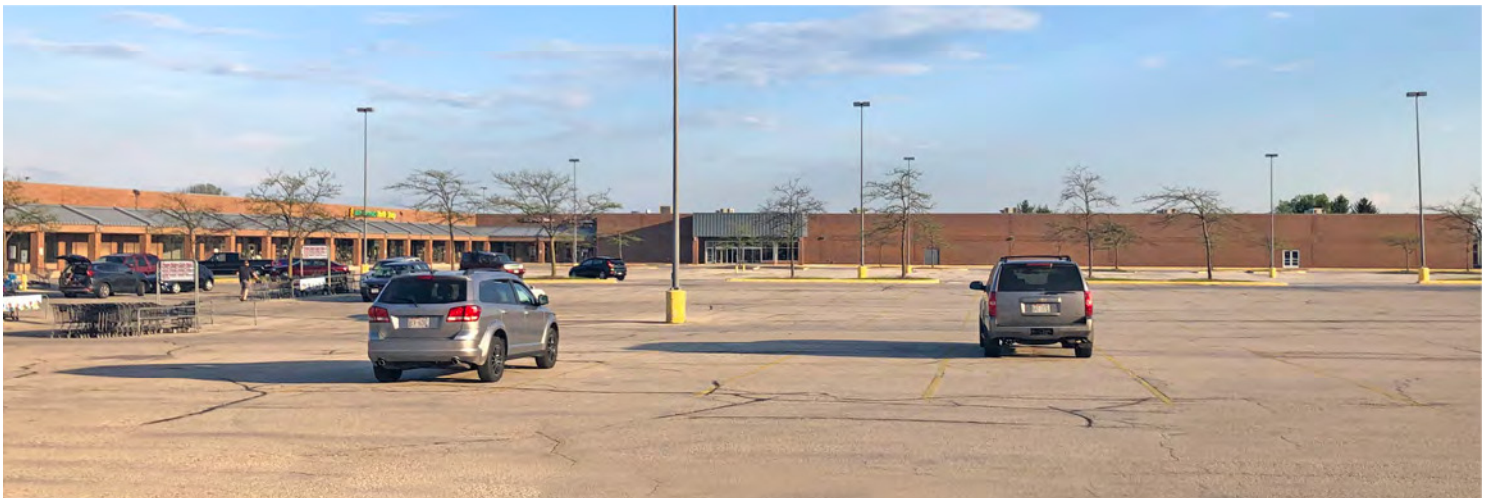




# PHOTOS

2615-2643 EASTERN AVENUE, PLYMOUTH, WI 53073

RETAIL FOR LEASE



**AMK PROPERTIES TEAM**  
Suntide Commercial Realty  
2550 University Avenue W. #305-S  
St. Paul, MN 55114  
651-603-0321

**MATTHEW KLEIN, CCIM**  
Senior Vice President, Principal  
(612) 382-3403  
mklein@suntide.com  
20186454, Minnesota



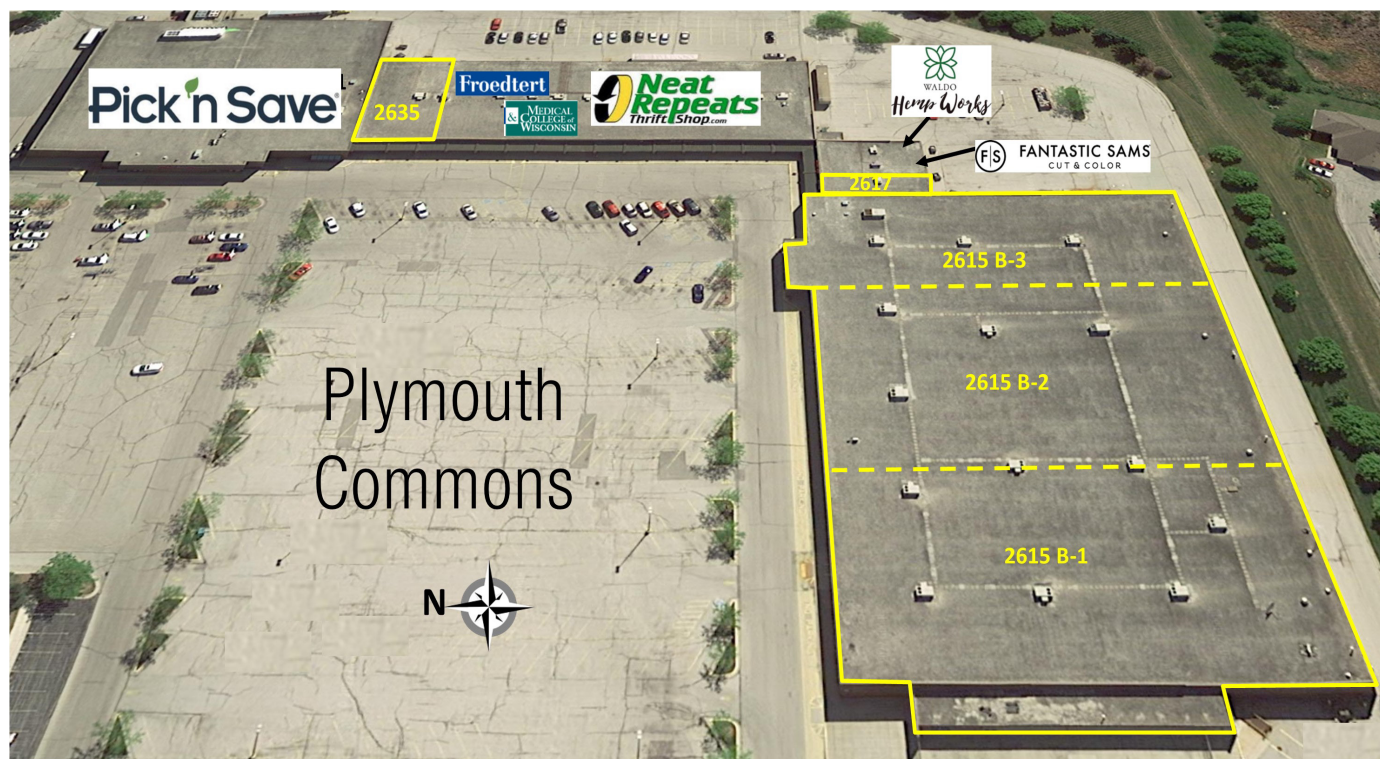


# AVAILABLE:

2615-2643 EASTERN AVENUE, PLYMOUTH, WI 53073

RETAIL FOR LEASE

2615-2643 Eastern Avenue, Plymouth, WI 53073



## AVAILABLE SUITES

2615 - B1	46,760 SF (41,130 SF + 5,630 SF Mezz)	Negotiable / Net Lease	Can combine for up to 89,199 SF contiguous
2615 - B2	28,714 SF	Negotiable / Net Lease	Can combine for up to 89,199 SF contiguous
2615 - B3	19,355 SF	Negotiable / Net Lease	Can combine for up to 89,199 SF contiguous
2635	8,450 SF	Negotiable / Net Lease	



**AMK PROPERTIES TEAM**  
Suntide Commercial Realty  
2550 University Avenue W. #305-S  
St. Paul, MN 55114  
651-603-0321

**MATTHEW KLEIN, CCIM**  
Senior Vice President, Principal  
(612) 382-3403  
mklein@suntide.com  
20186454, Minnesota

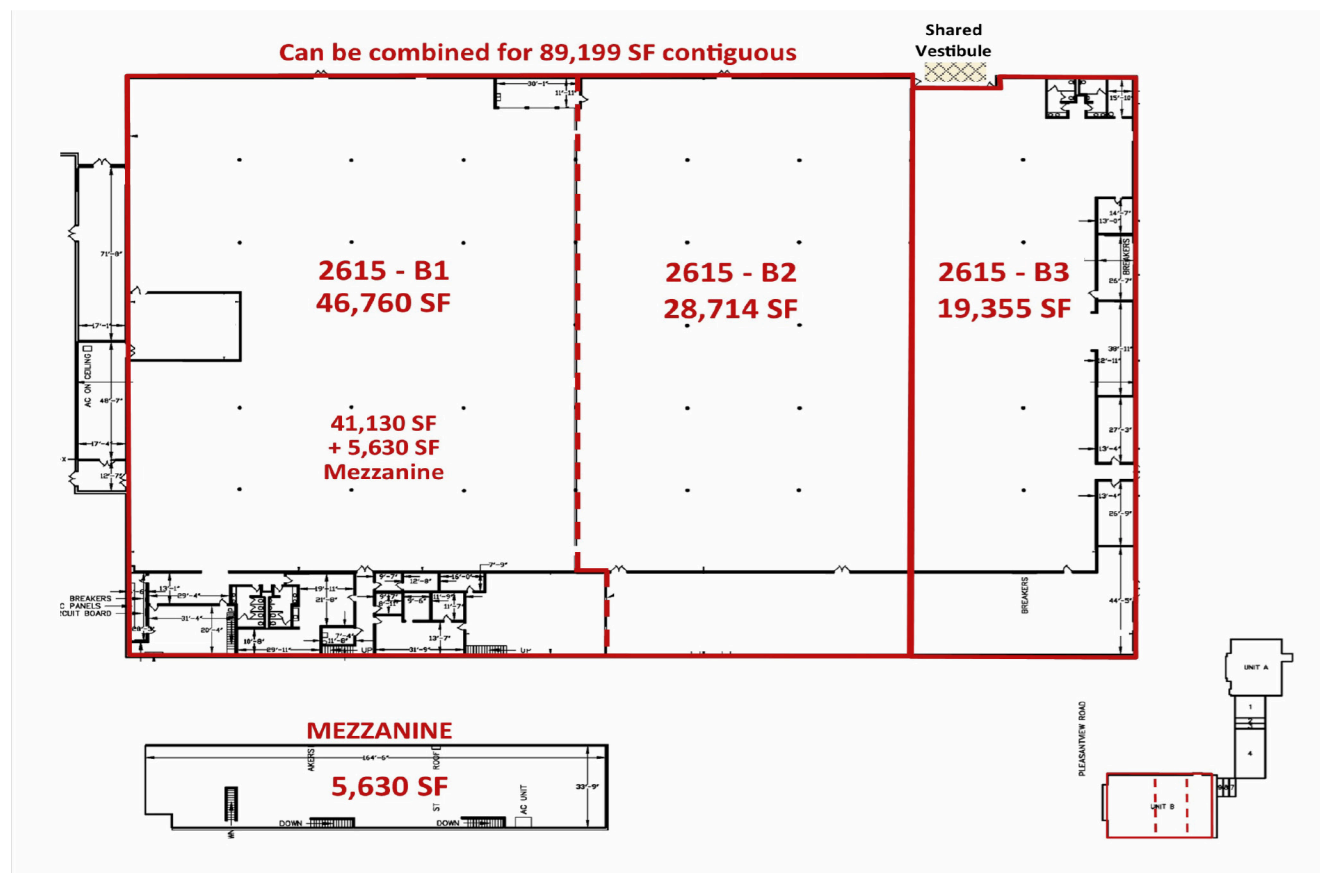


# SUITE 2615:

2615-2643 EASTERN AVENUE, PLYMOUTH, WI 53073

UP TO 89,199 SF

## 2615 - Potential Space Size Options Up to 89,199 SF



SUITE	SIZE	LEASE RATE / TYPE	NOTES
2615 - B1	46,760 SF (41,130 SF + 5,630 SF Mezz)	Negotiable / Net Lease	Can combine for up to 89,199 SF contiguous
2615 - B2	28,714 SF	Negotiable / Net Lease	Can combine for up to 89,199 SF contiguous
2615 - B3	19,355 SF	Negotiable / Net Lease	Can combine for up to 89,199 SF contiguous



**AMK PROPERTIES TEAM**  
Suntide Commercial Realty  
2550 University Avenue W. #305-S  
St. Paul, MN 55114  
651-603-0321

**MATTHEW KLEIN, CCIM**  
Senior Vice President, Principal  
(612) 382-3403  
mklein@suntide.com  
20186454, Minnesota

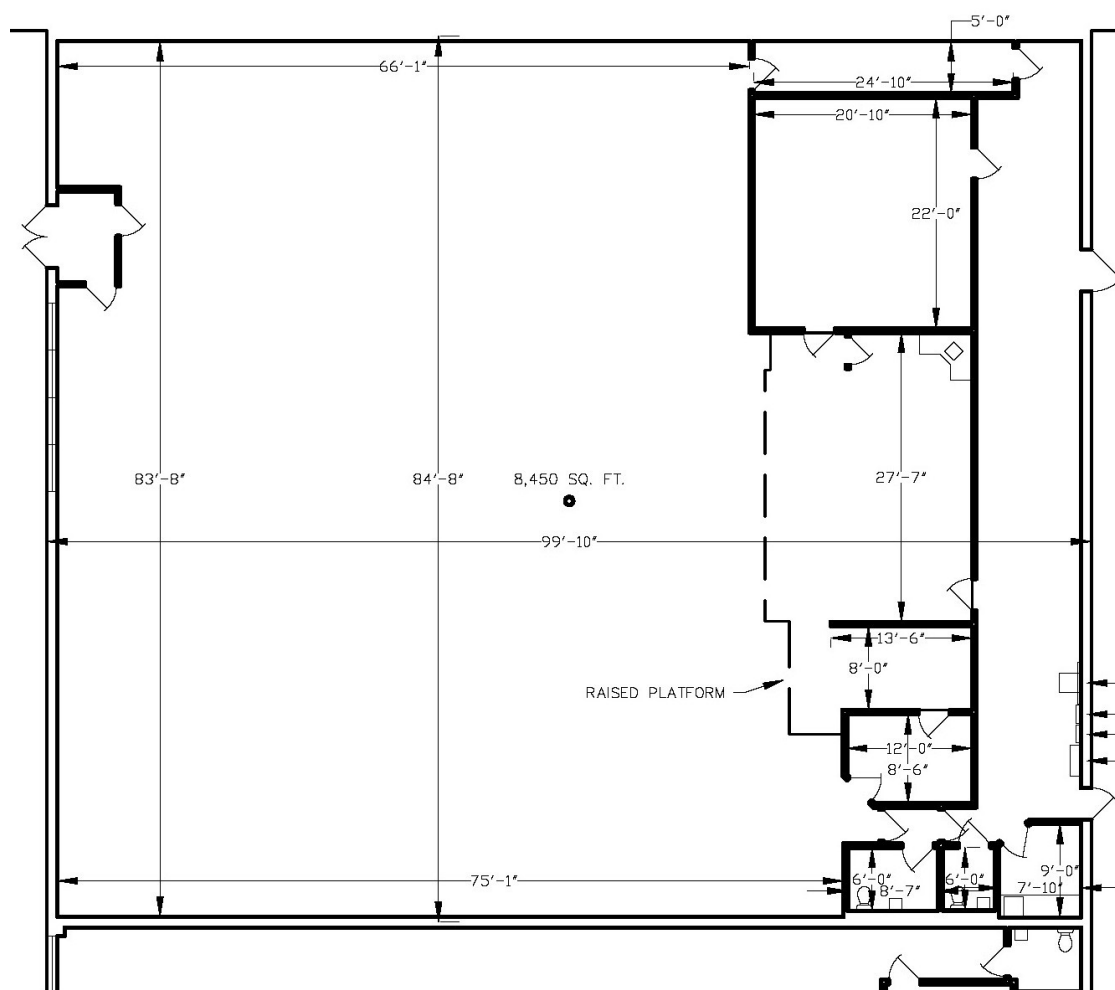


# SUITE 2635:

2615-2643 EASTERN AVENUE, PLYMOUTH, WI 53073

8,450 SF

## Suite 2635 - 8,450 SF



SUITE	SIZE	LEASE RATE / TYPE	NOTES
2635	8,450	Negotiable / Net Lease	In-line Retail



**AMK PROPERTIES TEAM**  
Suntide Commercial Realty  
2550 University Avenue W. #305-S  
St. Paul, MN 55114  
651-603-0321

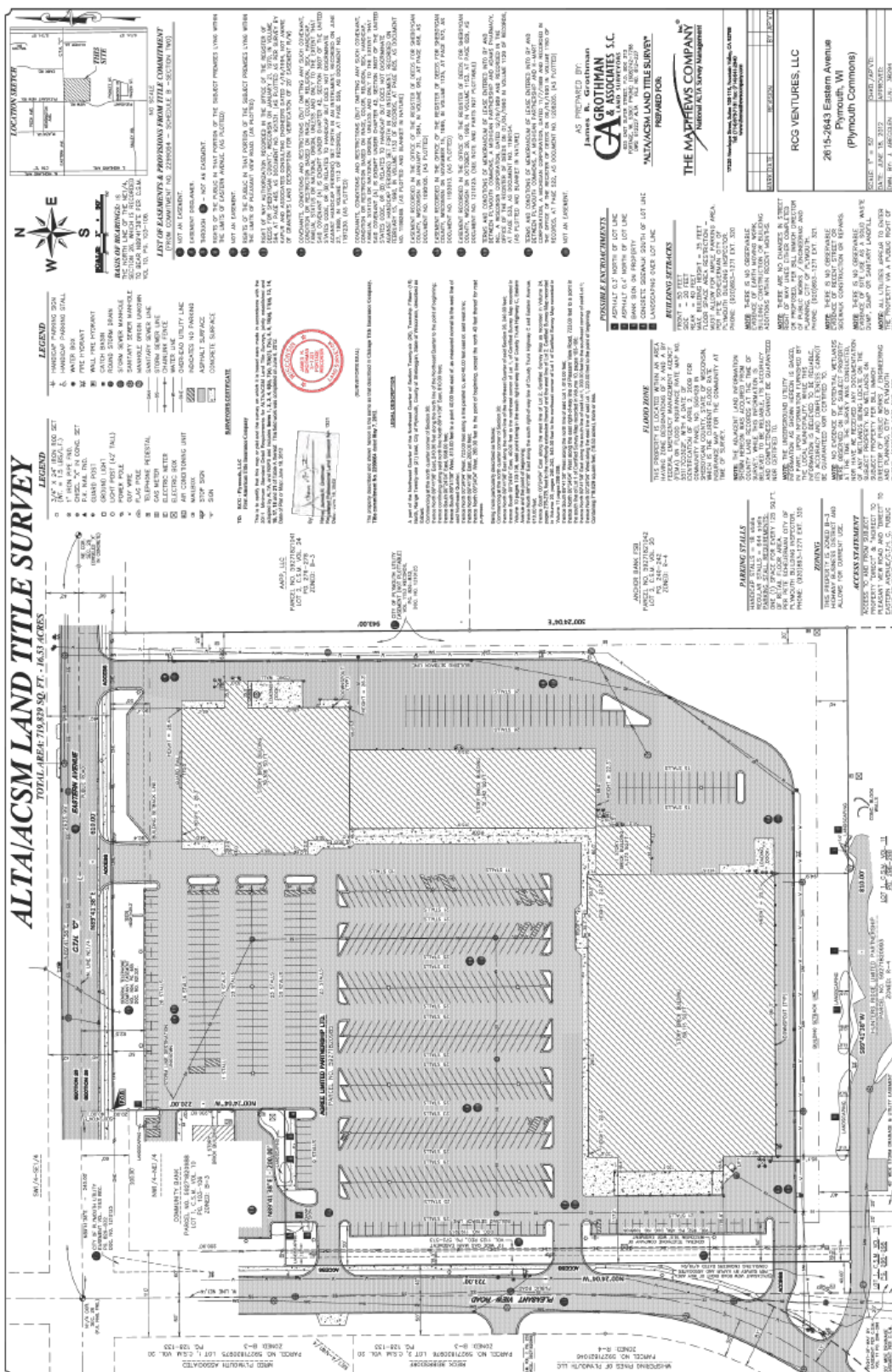
**MATTHEW KLEIN, CCIM**  
Senior Vice President, Principal  
(612) 382-3403  
mklein@suntide.com  
20186454, Minnesota





2615-2643 EASTERN AVENUE, PLYMOUTH, WI 53073

# PLYMOUTH COMMONS



**AMK PROPERTIES TEAM**  
Suntide Commercial Realty  
2550 University Avenue W. #305-S  
St. Paul, MN 55114  
651-603-0321

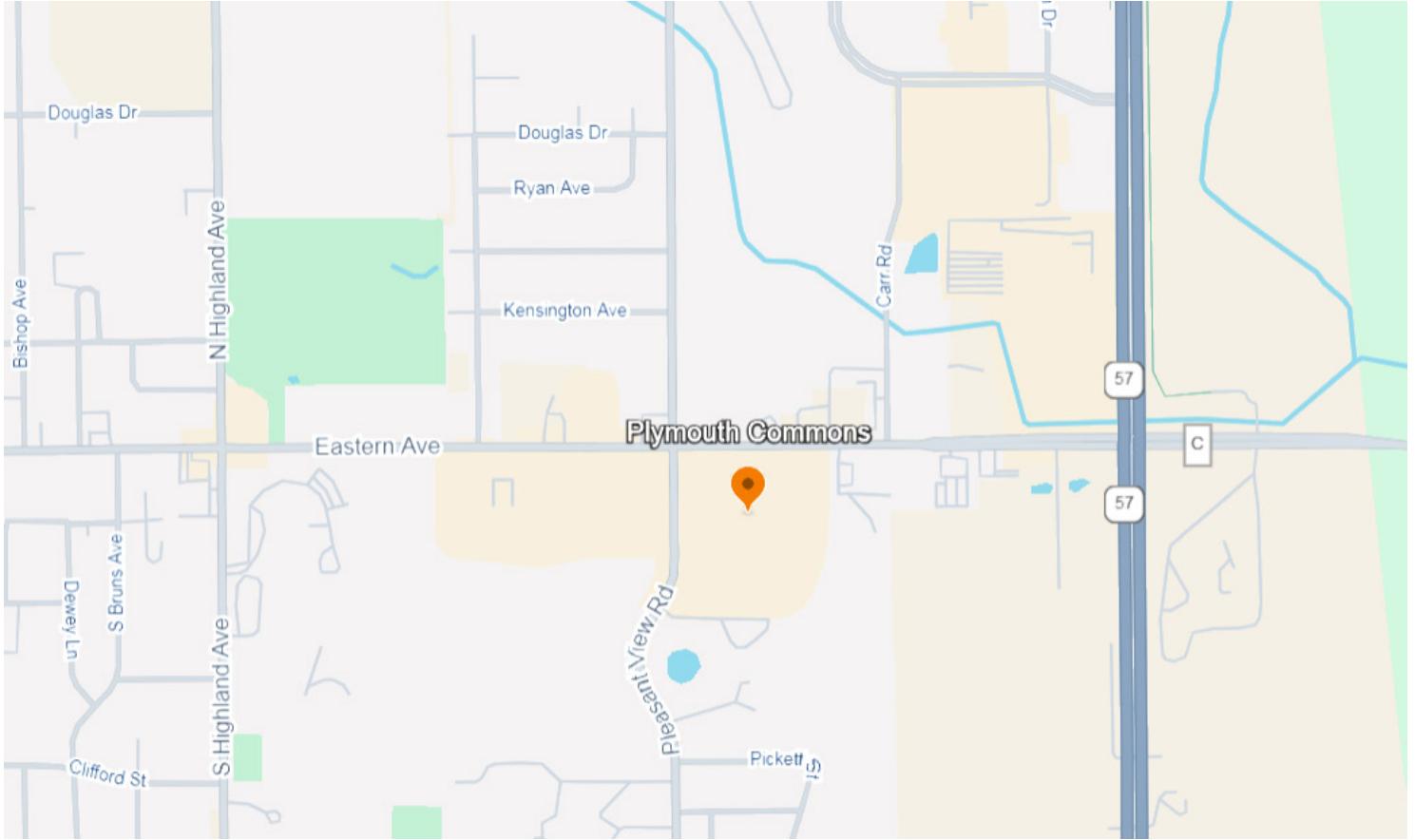
**MATTHEW KLEIN, CCIM**  
Senior Vice President, Principal  
(612) 382-3403  
mklein@suntide.com  
20186454, Minnesota



# LOCATION MAPS

2615-2643 EASTERN AVENUE, PLYMOUTH, WI 53073

PLYMOUTH COMMONS



**AMK PROPERTIES TEAM**  
Suntide Commercial Realty  
2550 University Avenue W. #305-C  
St. Paul, MN 55114  
651-603-0321

**MATTHEW KLEIN, CCIM**  
Senior Vice President, Principal  
(612) 382-3403  
mklein@suntide.com  
20186454, Minnesota

