

Fully Equipped Restaurant

Retail
Property for
Lease

21 S Beneva Rd, Sarasota, FL 34232



Property Description

4,100 SF fully equipped restaurant with a large open dining room and a fully equipped commercial kitchen with all appliances and a walk-in cooler. Comes with literally everything you would need to run a successful restaurant!

Located between downtown Sarasota and I-75 at the major shopping hub of Beneva & Fruitville. Across the street from the newly renovated Bobby Jones Golf Club and City Park.

OFFERING SUMMARY

Lease Rate:	\$10,000 per month (NNN)
Available SF:	4,100 SF
Building Size:	6,800 SF

DEMOGRAPHICS	1 MILE	3 MILES	5 MILES
Total Households	5,711	42,053	80,910
Total Population	13,261	93,681	180,507
Average HH Income	\$89,452	\$102,267	\$113,922



Loyd Robbins

Principal Broker
(941)-356-9659
loyd@rerobbins.com



3580 S. Tuttle Ave
Sarasota FL 34239

www.rerobbins.com

Turnkey Opportunity

Retail
Property for
Lease

21 S Beneva Rd, Sarasota, FL 34232



Loyd Robbins
Principal Broker
(941)-356-9659
loyd@rerobbins.com



3580 S. Tuttle Ave
Sarasota FL 34239
www.rerobbins.com

Ready for Your Concept

Retail
Property
For Lease

21 S Beneva Rd, Sarasota, FL 34232



Loyd Robbins
Principal Broker
(941)-356-9659
loyd@rerobbins.com

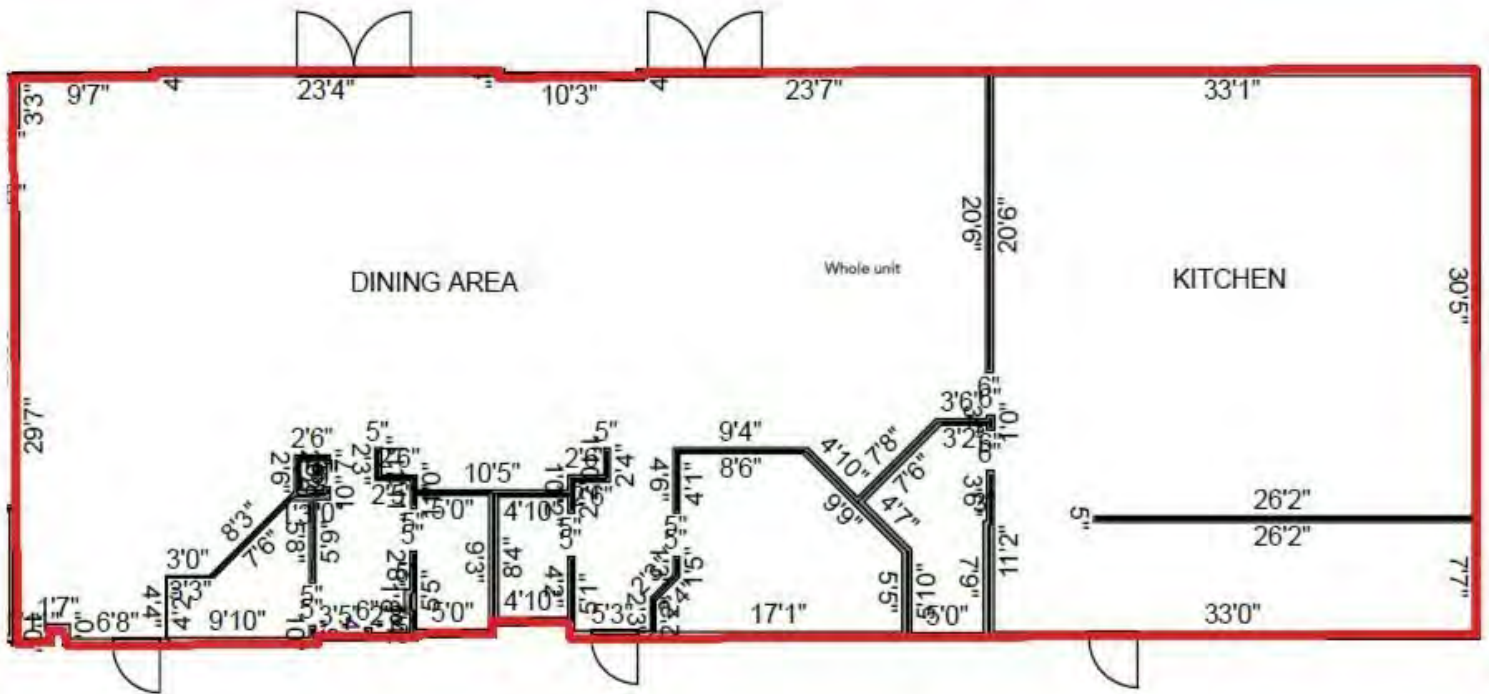


3580 S. Tuttle Ave
Sarasota FL 34239
www.rerobbins.com

Walk In & Start Cooking

Retail
Property
For Lease

21 S Beneva Rd, Sarasota, FL 34232



Loyd Robbins

Principal Broker
(941)-356-9659
loyd@rerobbins.com



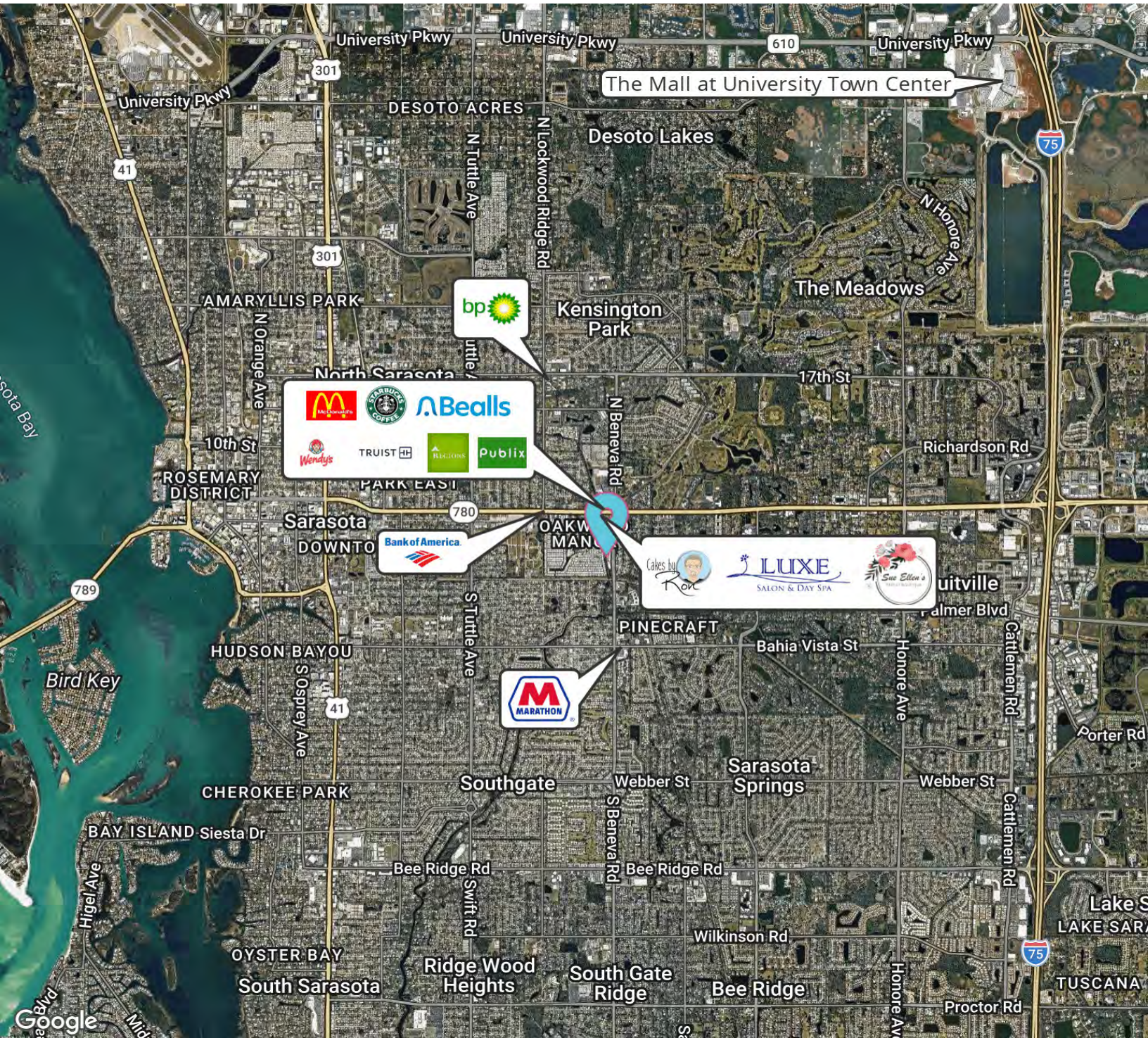
3580 S. Tuttle Ave
Sarasota FL 34239

www.rerobbins.com

Centrally Located

Retail
Property for
Lease

21 S Beneva Rd, Sarasota, FL 34232



Loyd Robbins

Principal Broker
(941)-356-9659
loyd@rerobbins.com



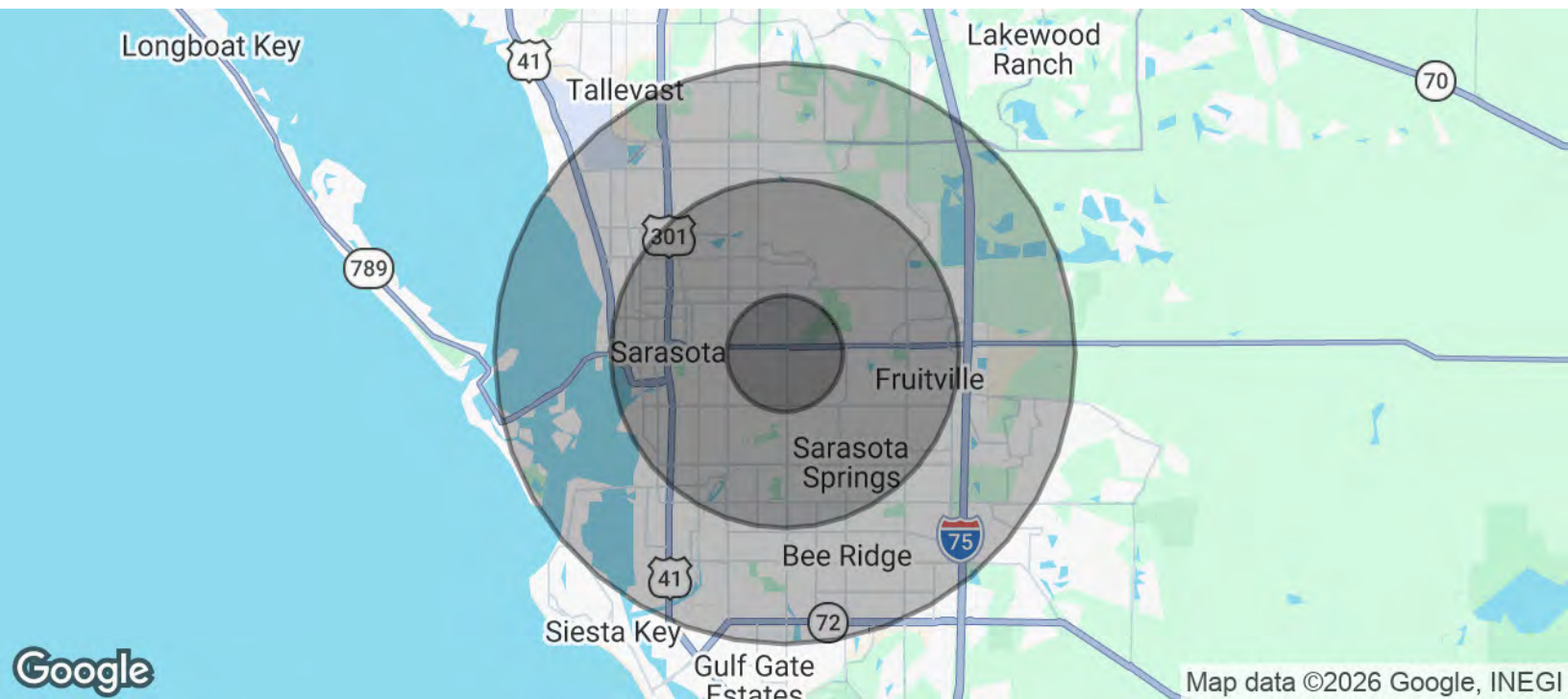
3580 S. Tuttle Ave
Sarasota FL 34239

www.rerobbins.com

Steadily Growing Market

Retail
Property for
Lease

21 S Beneva Rd, Sarasota, FL 34232



POPULATION	1 MILE	3 MILES	5 MILES
Total Population	13,261	93,681	180,507
Average Age	44.2	48.8	49.8
Average Age (Male)	41.3	45.8	47.2
Average Age (Female)	47.2	50.7	51.6
HOUSEHOLDS & INCOME	1 MILE	3 MILES	5 MILES
Total Households	5,711	42,053	80,910
# of Persons per HH	2.3	2.2	2.2
Average HH Income	\$89,452	\$102,267	\$113,922
Average House Value	\$280,142	\$397,599	\$497,672

2023 American Community Survey (ACS)



Loyd Robbins

Principal Broker
(941)-356-9659
loyd@rerobbins.com



3580 S. Tuttle Ave
Sarasota FL 34239

www.rerobbins.com