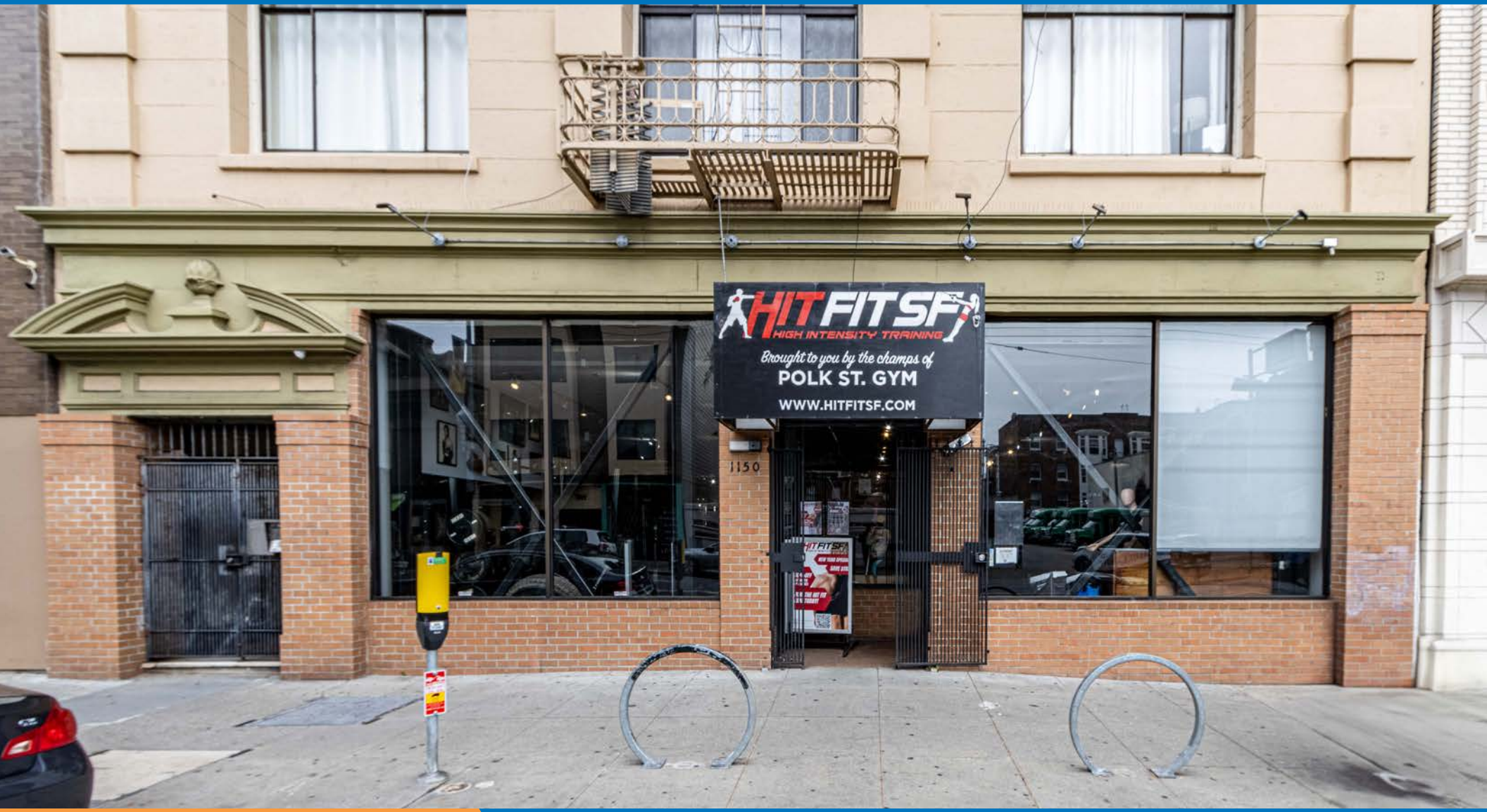


1150 SUTTER STREET

FOR LEASE | LARGE FORMAT RETAIL / SERVICES SPACE | LOWER NOB HILL

TCP
TOUCHSTONE
COMMERCIAL PARTNERS



1150 SUTTER STREET

PROPERTY SUMMARY

ADDRESS

1150 Sutter Street, San Francisco, CA 94109

AVAILABLE SPACE

Ground Level: +/- 5,000 Square Feet

Lower Level: +/- 4,500 Square Feet

RENTAL RATE

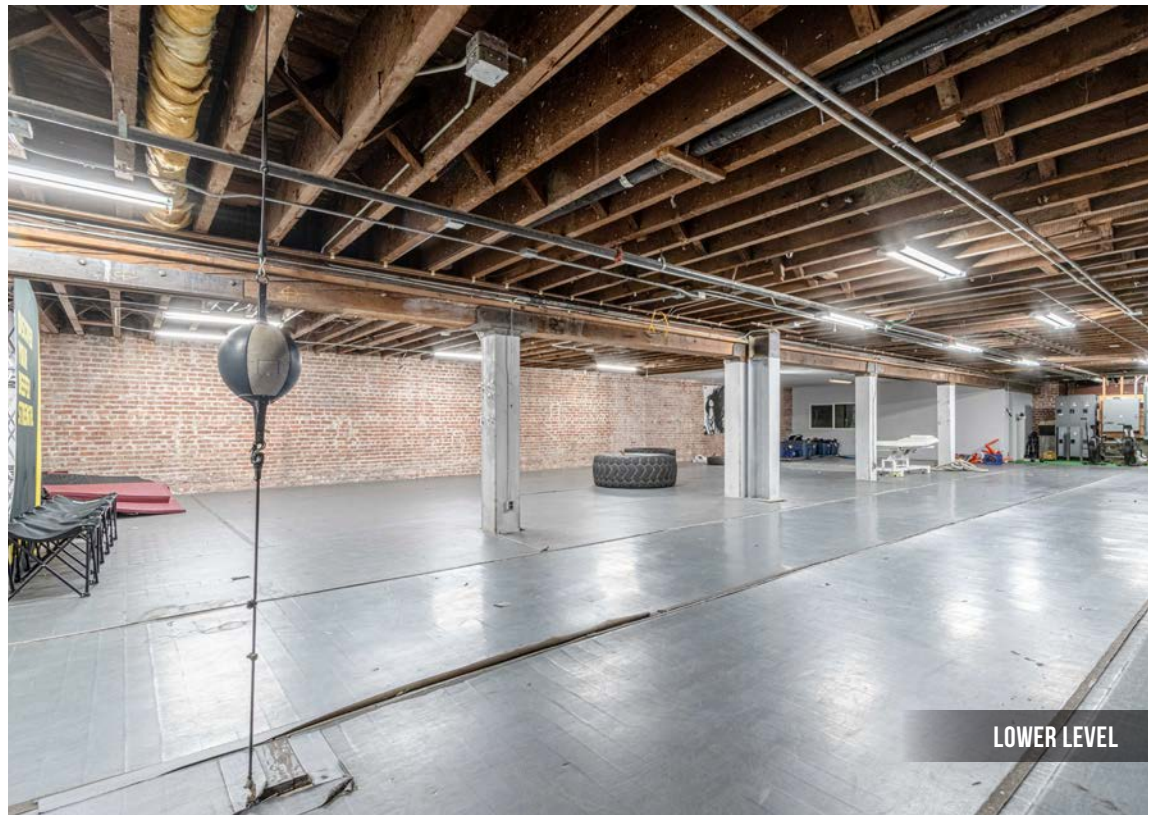
Call For Pricing

AVAILABLE

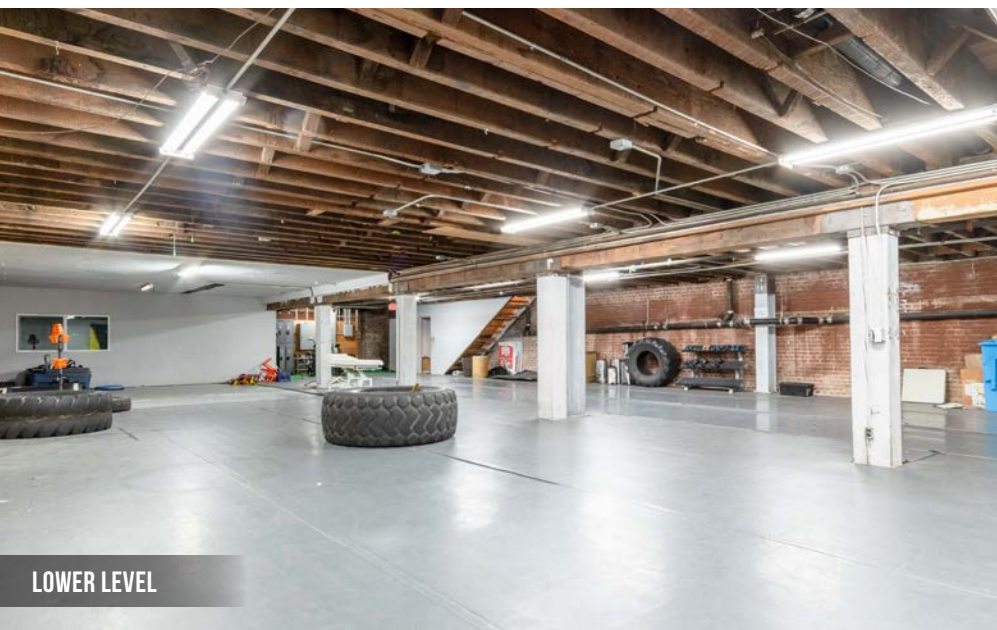
Immediately

BUILDING ATTRIBUTES

- + Double Wide Storefront
- + High Ceilings
- + Sound Proofing In Ceilings
- + Large Sign
- + Entrance at Grade
- + Multi Stall ADA Restrooms
- + Many Uses Considered
- + Second Means Of Egress To Fern Street



1150 SUTTER STREET



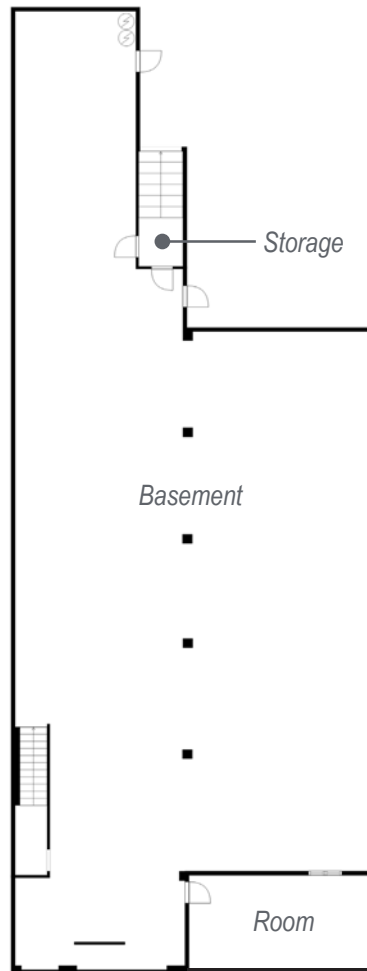
1150 SUTTER STREET

FLOOR PLAN

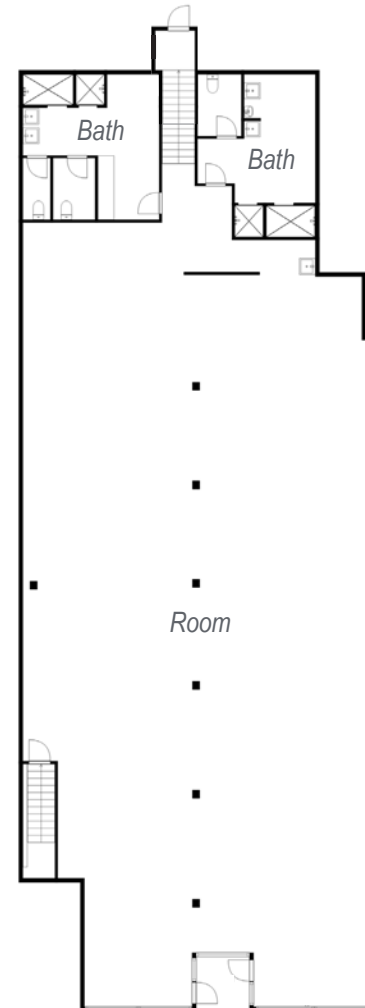
Ground Level: +/- 5,000 Square Feet

Lower Level: +/- 4,500 Square Feet

LOWER LEVEL



GROUND FLOOR



Sutter Street

1150 SUTTER STREET

LOCATION OVERVIEW

High traffic Lower Nob Hill Location, walkable to many amenities and surrounding neighborhoods.



02 MIN to Polk St MUNI
13 MIN to Lafayette Park
18 MIN to Civic Center BART



04 MIN to Union Square
05 MIN to Pacific Heights
08 MIN to Financial District



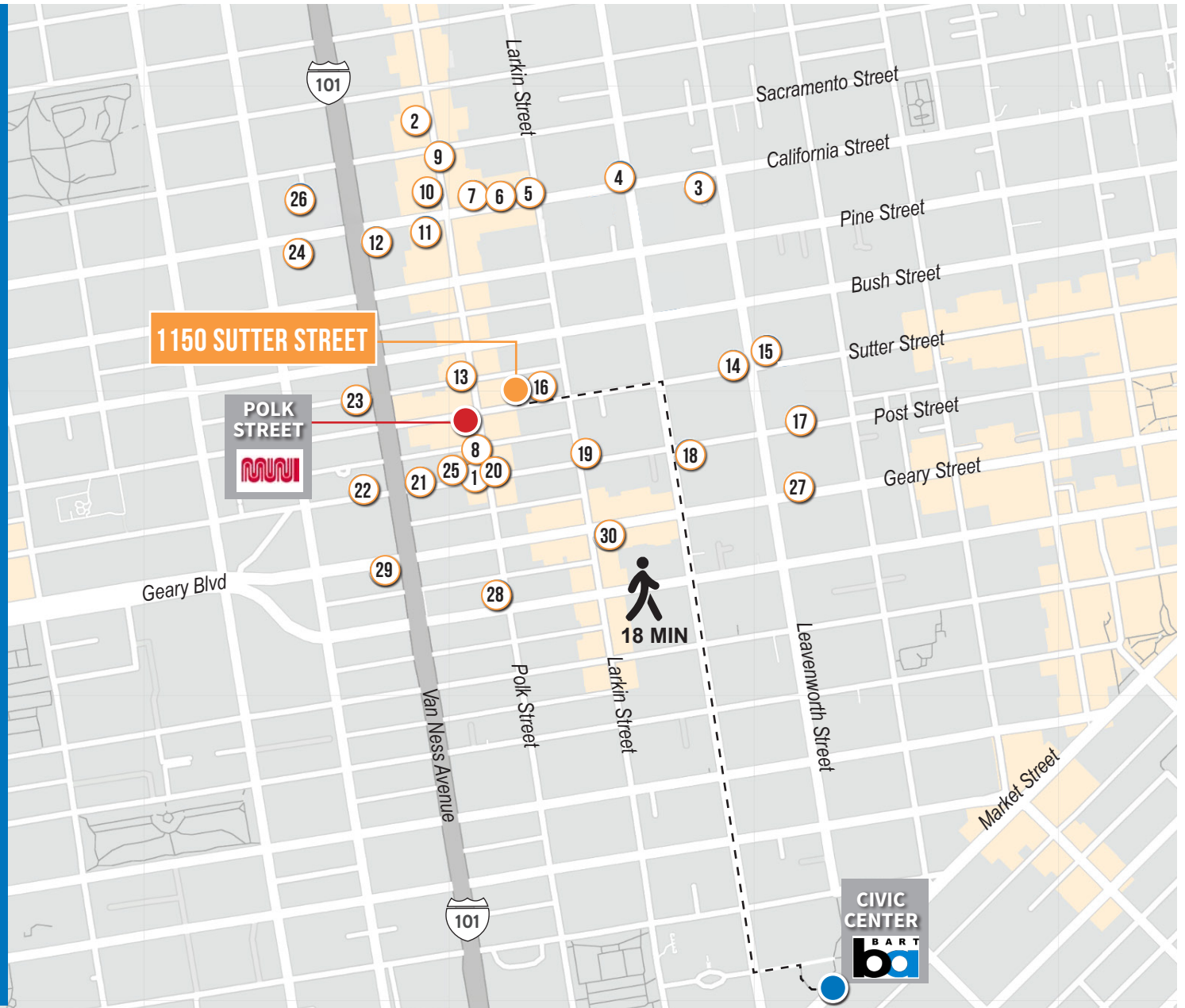
05 MIN to 101 On-Ramp
08 MIN to 280 On-Ramp
09 MIN to 80 On-Ramp



1150 SUTTER STREET

NEARBY AMENITIES

- 1.....BlindPig Speakeasy Lounge
- 2.....Bob's Donut's
- 3.....Zeki's Bar
- 4.....Ciccino
- 5.....Mymy
- 6.....Nobhill Pizza & Shawarma
- 7.....Cordon Bleu Vietnamese
- 8.....Beso Mae Cocktail Lounge
- 9.....Ora Wine Bar
- 10.....Swan Oyster Depot
- 11.....Crustacean Restaurant
- 12.....Teaspoon
- 13.....Mayes Oyster House
- 14.....Bite
- 15.....Chisme Cantina
- 16.....Le Marais Bakery
- 17.....Farm : Table
- 18.....Propagation
- 19.....DACHA Kitchen and Bar
- 20.....Jackalope
- 21.....24 Hour Fitness
- 22.....Fedex Print & Ship Center
- 23.....Bevmo!
- 24.....Whole Foods Market
- 25.....Sushi Sato
- 26.....Guitar Center
- 27.....Mensho Tokyo Sf
- 28.....Ike's Sandwiches
- 29.....Tommy's Joynt
- 30.....Lers Ros



1150 SUTTER STREET



1150 SUTTER STREET



JARON ELIOPOULOS DRE # 01975155
415.608.6336 | jaron@tcpre.com

CAMERON TU DRE # 02100436
510.919.8193 | cameron@tcpre.com

VISIT ELIOPOULOSGROUP.COM

Corp. Lic. 01112906
www.tcpre.com

The information presented has been secured from sources we believe to be reliable but we make no representations or warranties, expressed or implied, as to the accuracy of the information. Lessee must verify the information and bears all risk for any inaccuracies.