

# Land For Sale

6900 E Front Street, Kansas City, Missouri 64120



**FOR SALE: \$550,000**

## Property Highlights:

- Lot size is 1.278+/- Acres, 55,670+/- SF
- Exceptional development opportunity
- Zoned M1-5
- Excellent access to northbound and southbound I-435
- Frontage on Front Street with more than 25,700 vehicles per day

**Opes Commercial Real Estate**

Office: (816) 384-2900

1804 Swift St. Ste. 101 North Kansas City, MO 64116

**For More Information:**

Nate Prather | Office: (816) 268-4483

[ntprather@opescre.com](mailto:ntprather@opescre.com)

# Land For Sale

6900 E Front Street, Kansas City, Missouri 64120

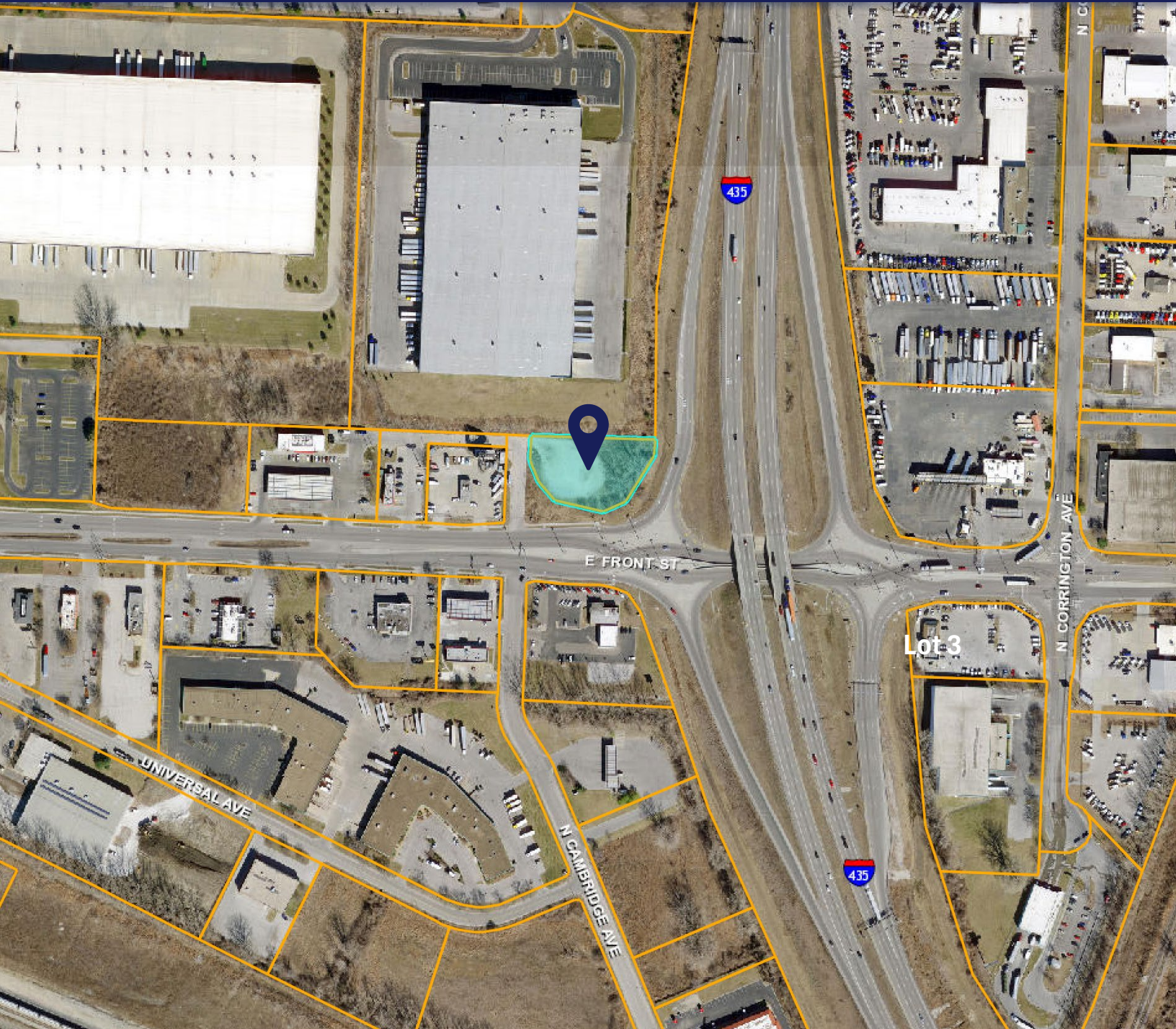


**Opes Commercial Real Estate**  
Office: (816) 384-2900  
1804 Swift St. Ste. 101 North Kansas City, MO 64116

**For More Information:**  
Nate Prather | Office: (816) 268-4483  
[ntprather@opescre.com](mailto:ntprather@opescre.com)

# Land For Sale

6900 E Front Street, Kansas City, Missouri 64120



**Disclaimer:** Information is believed to be accurate but is not guaranteed. Opes Commercial Real Estate makes no representations or warranties as to its accuracy or completeness.

**Opes Commercial Real Estate**  
Office: (816) 384-2900  
1804 Swift St. Ste. 101 North Kansas City, MO 64116

**For More Information:**  
Nate Prather | Office: (816) 268-4483  
ntrprather@opescre.com