

ELIZABETH ON SEVENTH

1942 East 7th Street Suite 350, Charlotte, NC 28204

SUBLEASE OPPORTUNITY



ELENA JI

Senior Associate
704.317.1944
Elena@firstearlypartners.com

KATIE CORRIE

Vice President
704.317.1948
Katie@firstearlypartners.com

JUBAL EARLY

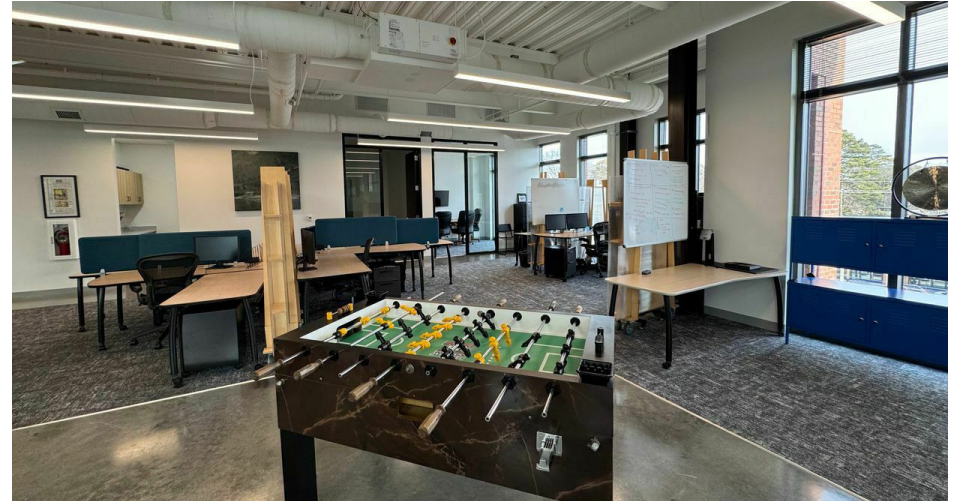
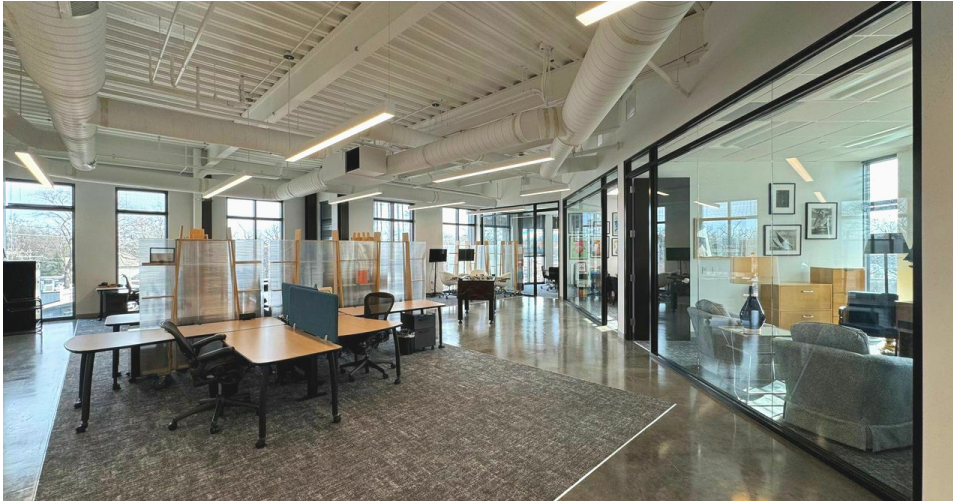
Founding Partner
704.317.1945
jubal@firstearlypartners.com

FIRST & EARLY
— PARTNERS —

COMMERCIAL REAL ESTATE ADVISORS

1942 EAST 7TH STREET SUITE 350, CHARLOTTE, NC 28204

PROPERTY SUMMARY



PROPERTY DESCRIPTION

Elizabeth on Seventh is a premier Class A mixed-use office and retail development totaling ±103,500 square feet located in one of Charlotte's most walkable and character-rich submarkets. The building delivers modern Class A office space above activated ground-floor retail, designed to support today's workplace needs while enhancing the surrounding neighborhood fabric. Thoughtful architecture, outdoor connectivity, and visibility along East 7th Street position the property as a destination for both tenants and visitors.

SUBLEASE DETAILS

Lease Rate:	Contact Broker
Available SF:	±4,052 SF
Furniture:	Available
Lease Expiration Date:	12/31/2029

ELENA JI

Senior Associate
704.317.1944
Elena@firstearlypartners.com

KATIE CORRIE

Vice President
704.317.1948
Katie@firstearlypartners.com

JUBAL EARLY

Founding Partner
704.317.1945
jubal@firstearlypartners.com

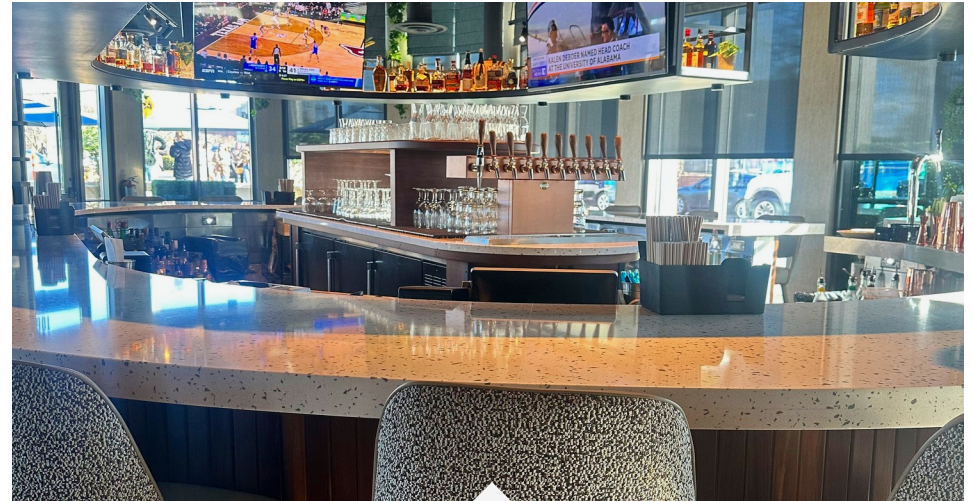
FIRST & EARLY
— PARTNERS —
COMMERCIAL REAL ESTATE ADVISORS

1942 EAST 7TH STREET SUITE 350, CHARLOTTE, NC 28204

PROPERTY HIGHLIGHTS



Building Name:	Elizabeth on Seventh
Property Type:	Office
Parking:	3.29/1,000 SF
Floors:	4
Class:	A
Year Built:	2022



- Office building with 22,000 square feet of dedicated ground floor retail space.
- First floor tenant lounge and outdoor courtyard.
- Highly walkable neighborhood surrounded by numerous high-end retailers.
- Direct access to office from each parking floor.
- Close proximity to Charlotte's premier neighborhoods, Uptown, I-77, and I-74.
- LEED Silver, Fitwel, and WiredScore Platinum Certified.

ELENA JI

Senior Associate
704.317.1944
Elena@firstearlypartners.com

KATIE CORRIE

Vice President
704.317.1948
Katie@firstearlypartners.com

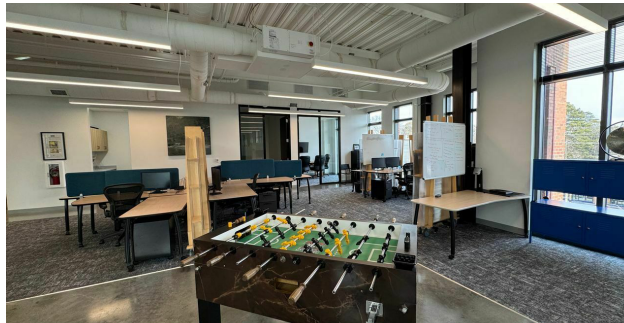
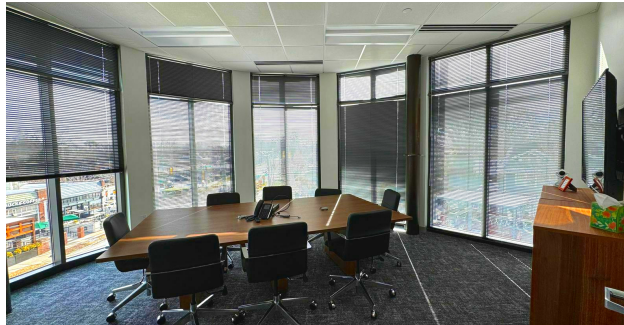
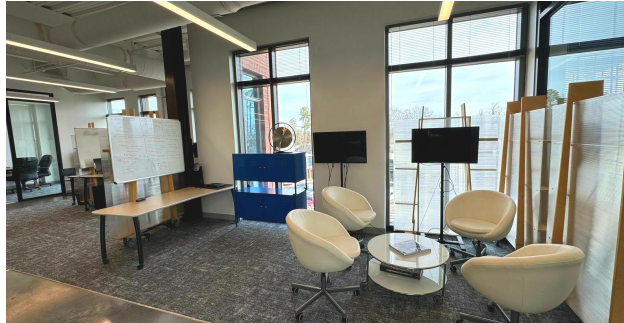
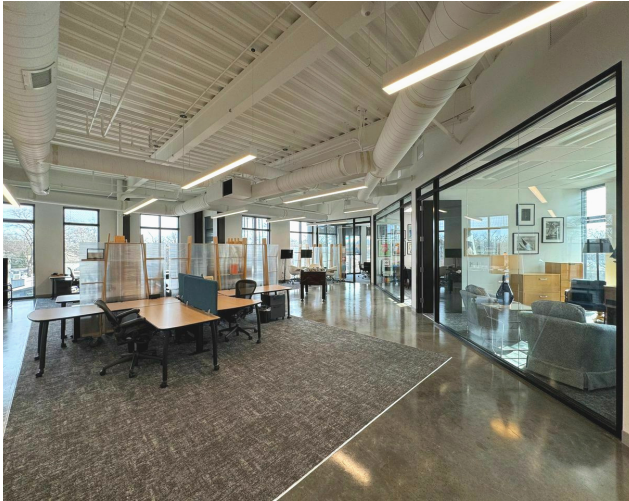
JUBAL EARLY

Founding Partner
704.317.1945
jugal@firstearlypartners.com

FIRST & EARLY
— PARTNERS —
COMMERCIAL REAL ESTATE ADVISORS

1942 EAST 7TH STREET SUITE 350, CHARLOTTE, NC 28204

ADDITIONAL PHOTOS



ELENA JI

Senior Associate
704.317.1944
Elena@firstearlypartners.com

KATIE CORRIE

Vice President
704.317.1948
Katie@firstearlypartners.com

JUBAL EARLY

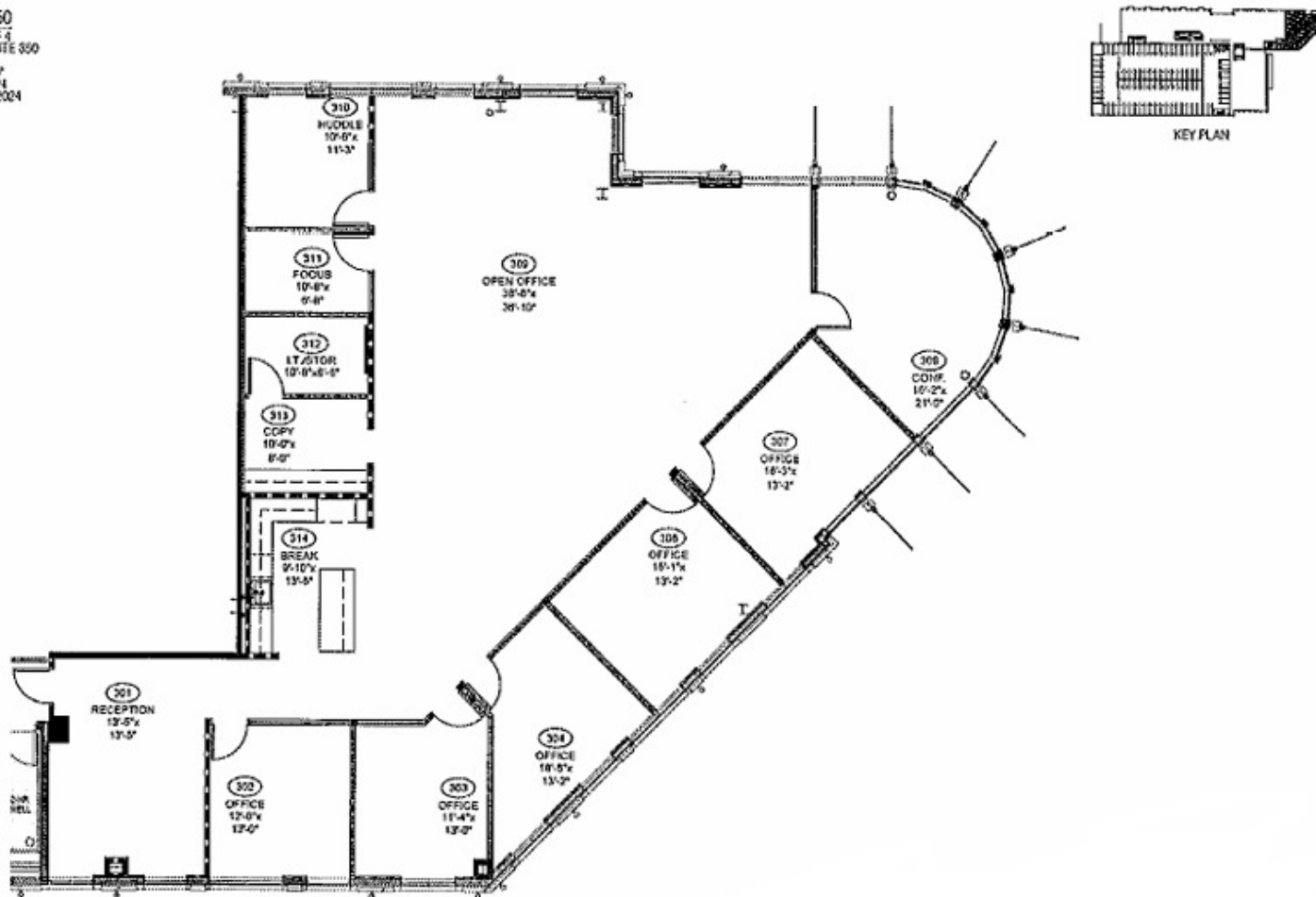
Founding Partner
704.317.1945
jubal@firstearlypartners.com

FIRST & EARLY
— PARTNERS —
COMMERCIAL REAL ESTATE ADVISORS

1942 EAST 7TH STREET SUITE 350, CHARLOTTE, NC 28204

FLOOR PLAN

SPEC SUITE 350
SPACE PLAN - 1 OF 1
ELIZABETH ON 7TH - SUITE 350
4,062 RSF
SCALE: 1/8" = 1'-0"
DATE: JUNE 4, 2024
REV DATE: JULY 11, 2024



ELENA JI

Senior Associate
704.317.1944
Elena@firstearlypartners.com

KATIE CORRIE

Vice President
704.317.1948
Katie@firstearlypartners.com

JUBAL EARLY

Founding Partner
704.317.1945
jubal@firstearlypartners.com

FIRST & EARLY
— PARTNERS —

COMMERCIAL REAL ESTATE ADVISORS

1942 EAST 7TH STREET SUITE 350, CHARLOTTE, NC 28204

RETAIL MAP



ELENA JI

Senior Associate
704.317.1944
Elena@firstearlypartners.com

KATIE CORRIE

Vice President
704.317.1948
Katie@firstearlypartners.com

JUBAL EARLY

Founding Partner
704.317.1945
jubal@firstearlypartners.com

FIRST & EARLY
— PARTNERS —
COMMERCIAL REAL ESTATE ADVISORS