

WAREHOUSE OPPORTUNITY

1 Wesley Street, Malden, MA 02148



- 25,095 SF Urban Warehouse Space For Lease
- 25' Clear Heights
- Large Pylon Signage Available
- Visibility From Route 1
- Large Dedicated Parking Field
- Conveniently Accessible From Multiple Route 1 Exits
- Rte. 1 0.6 Miles / 2 Minutes
- I-93 4.6 Miles / 17 Minutes
- I-95 7.5 Miles / 10 Minutes

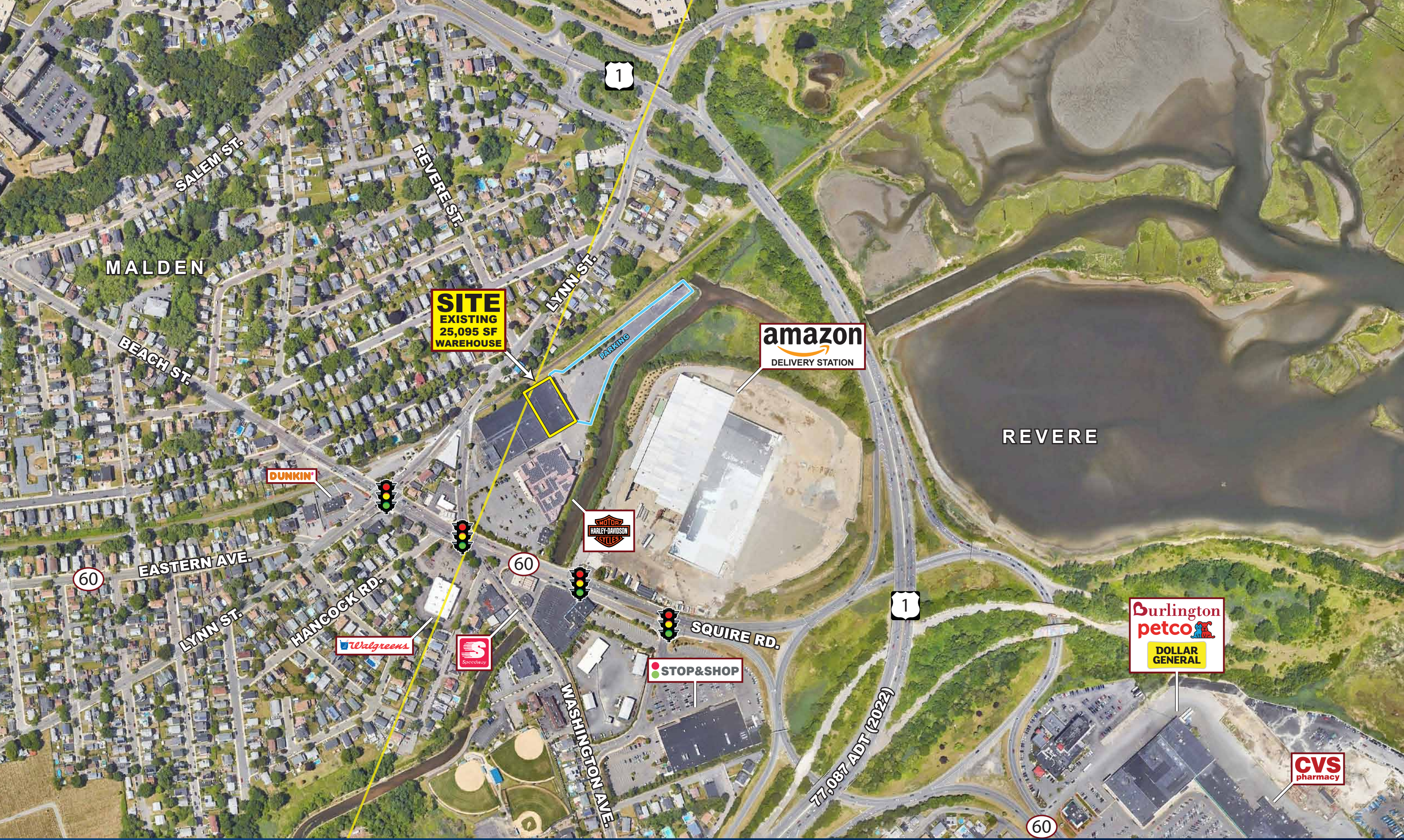
- Available: 25,095 SF
- Loading Configuration: Up To 3 Loading Docks Proposed
- Building: 101,803 SF
- Parking: 1.5 Acre Parking Field
- Drive-in Doors: One
- Lighting: LED
- Clear Height: 25'
- Fire Protection: New Fire Protection System
- Zoning: Revere: IP (Industrial Park)
Malden: I-1 (Industrial 1)

Mike Hotarek
mhotarek@easternretail.com
Direct: 781-849-9017

Sam Peterson
speterson@easternretail.com
Direct: 781-849-9016

Tommy Landry
tlandry@easternretail.com
Direct: 781-849-9015





SITE
EXISTING
25,095 SF
WAREHOUSE

amazon
DELIVERY STATION

DUNKIN'

MOTOR HARLEY-DAVIDSON CYCLES

Walgreens

Speedway

STOP & SHOP

Burlington petco
DOLLAR GENERAL

CVS pharmacy

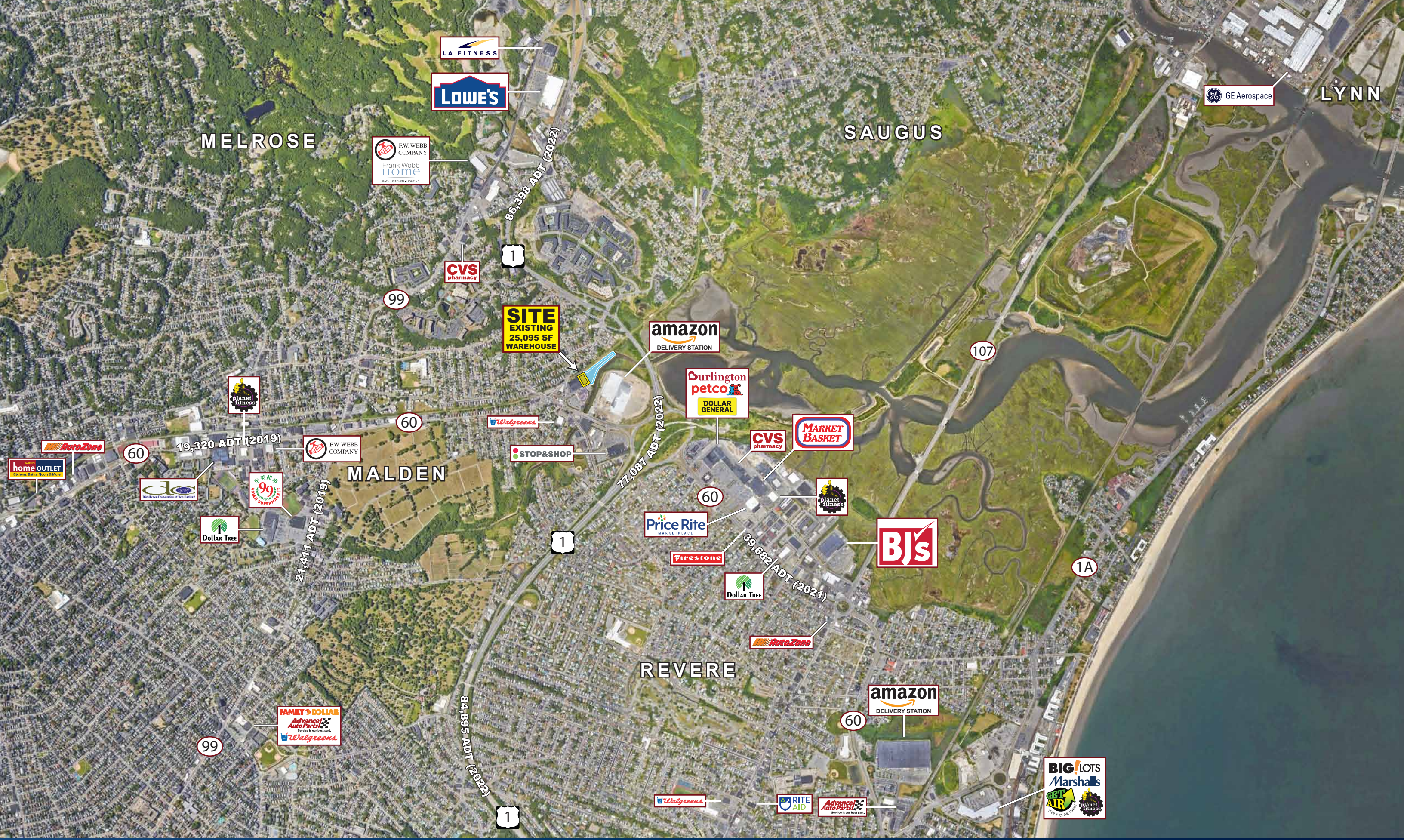
Mike Hotarek
mhotarek@easternretail.com
Direct: 781-849-9017

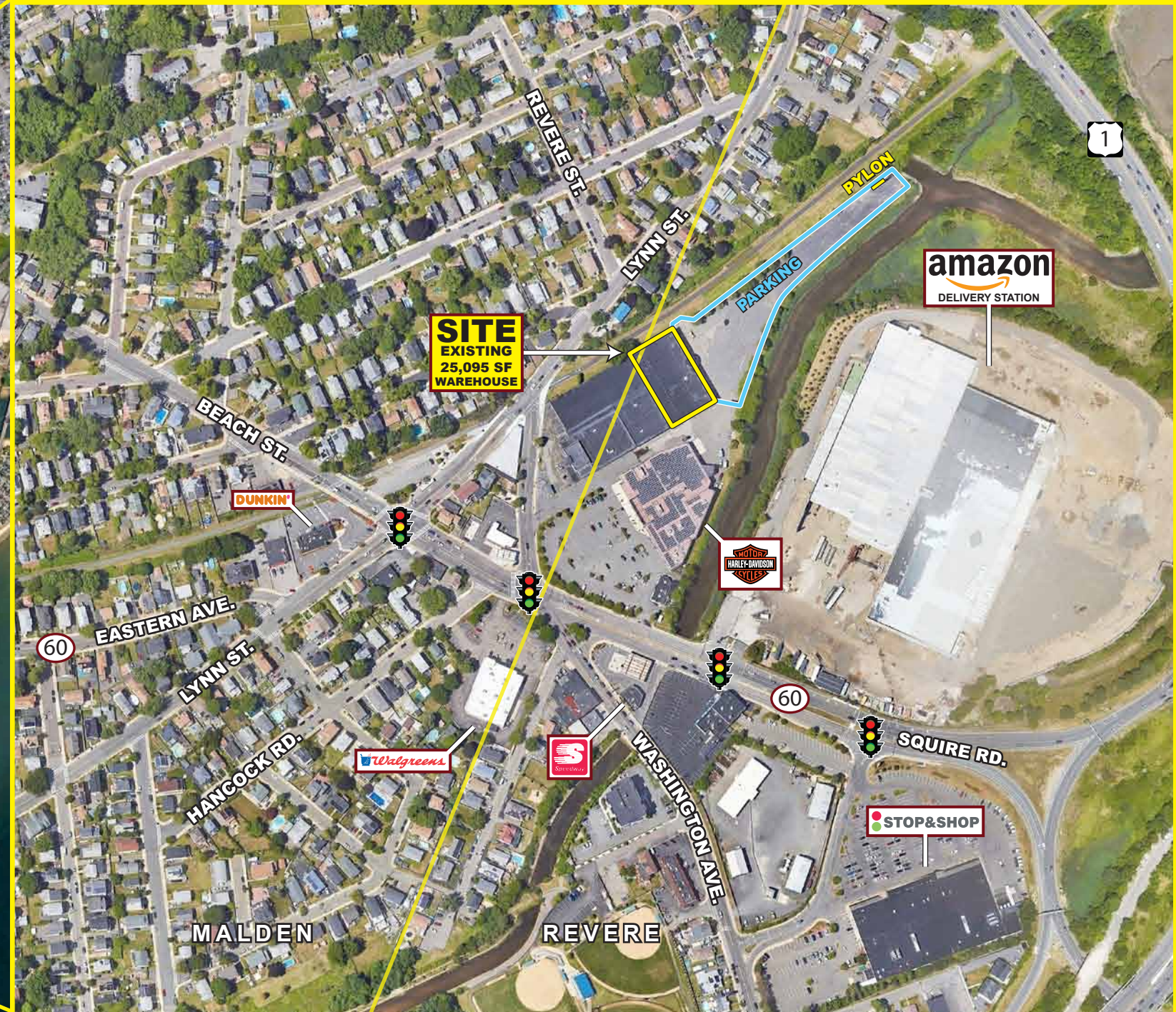
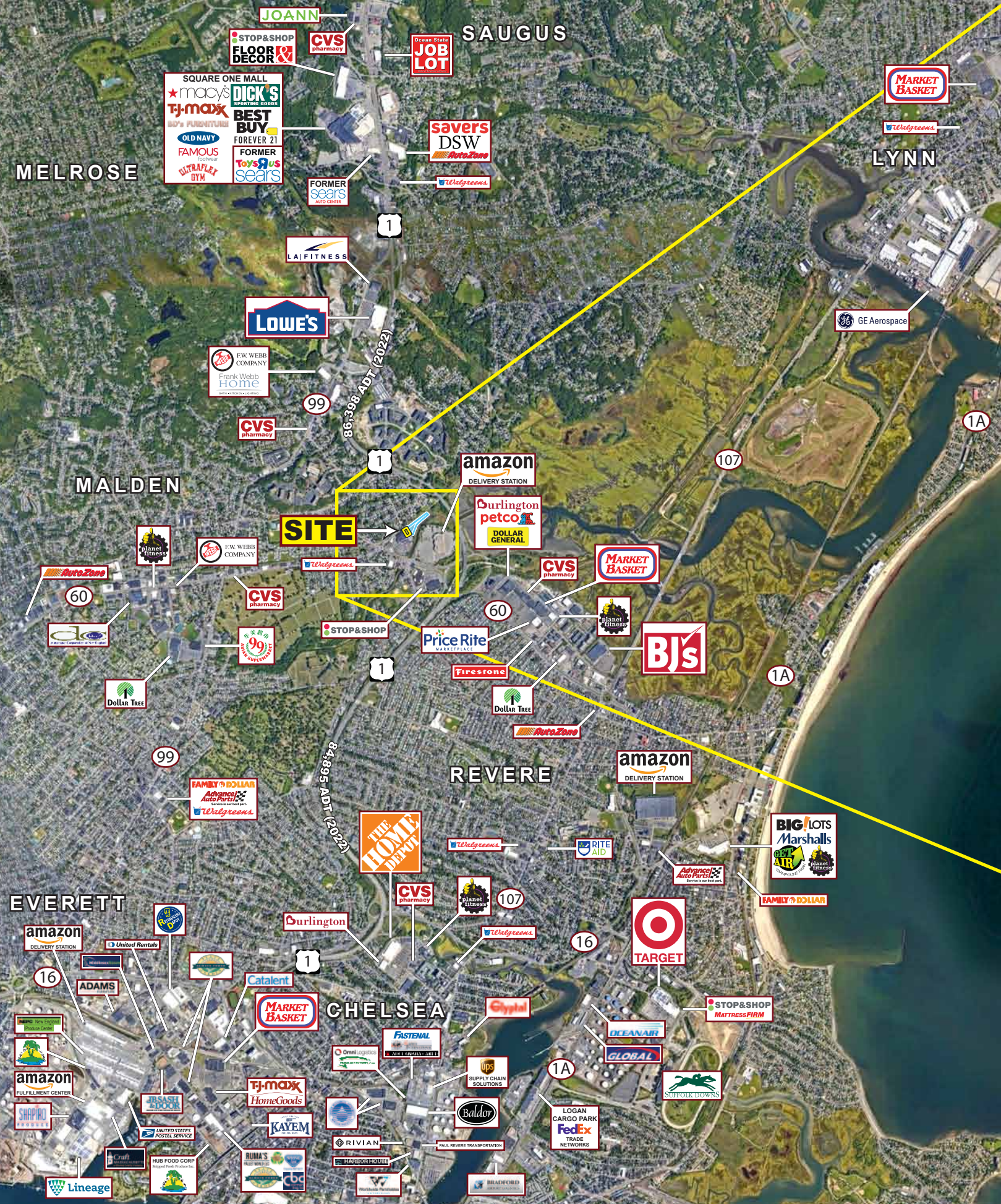
Sam Peterson
speterson@easternretail.com
Direct: 781-849-9016

Tommy Landry
tlandry@easternretail.com
Direct: 781-849-9015

The information above has been obtained from sources believed reliable. While we do not doubt its accuracy, we have not verified it and make no guarantee, warranty or representation about it. It is your responsibility to independently confirm its accuracy and completeness. Any projections, opinions, assumptions or estimates used are for example only and do not represent the current or future performance of the property. The value of this transaction to you depends on tax and other factors, which should be evaluated by your tax and financial advisors. You and your advisors should conduct a careful, independent investigation of the property to determine to your satisfaction, the suitability of the property for your needs.







Mike Hotarek
mhotarek@easternretail.com
Direct: 781-849-9017

Sam Peterson
speterson@easternretail.com
Direct: 781-849-9016

Tommy Landry
tlandry@easternretail.com
Direct: 781-849-9015

The information above has been obtained from sources believed reliable. While we do not doubt its accuracy, we have not verified it and make no guarantee, warranty or representation about it. It is your responsibility to independently confirm its accuracy and completeness. Any projections, opinions, assumptions or estimates used are for example only and do not represent the current or future performance of the property. The value of this transaction to you depends on tax and other factors, which should be evaluated by your tax and financial advisors. You and your advisors should conduct a careful, independent investigation of the property to determine to your satisfaction, the suitability of the property for your needs.





amazon
DELIVERY STATION

SITE
EXISTING
25,095 SF
WAREHOUSE

STOP & SHOP

Speedway

Walgreens

DUNKIN'

HARLEY-DAVIDSON
MOTOR CYCLES

84,895 ADT
(2022)

77,087 ADT
(2022)

WASHINGTON AVE.

SQUIRE RD.

BEACH ST.

LYNN ST.

PARKING

PYLON

60

1

1

Mike Hotarek
mhotarek@easternretail.com
Direct: 781-849-9017

Sam Peterson
speterson@easternretail.com
Direct: 781-849-9016

Tommy Landry
tlandry@easternretail.com
Direct: 781-849-9015

The information above has been obtained from sources believed reliable. While we do not doubt its accuracy, we have not verified it and make no guarantee, warranty or representation about it. It is your responsibility to independently confirm its accuracy and completeness. Any projections, opinions, assumptions or estimates used are for example only and do not represent the current or future performance of the property. The value of this transaction to you depends on tax and other factors, which should be evaluated by your tax and financial advisors. You and your advisors should conduct a careful, independent investigation of the property to determine to your satisfaction, the suitability of the property for your needs.





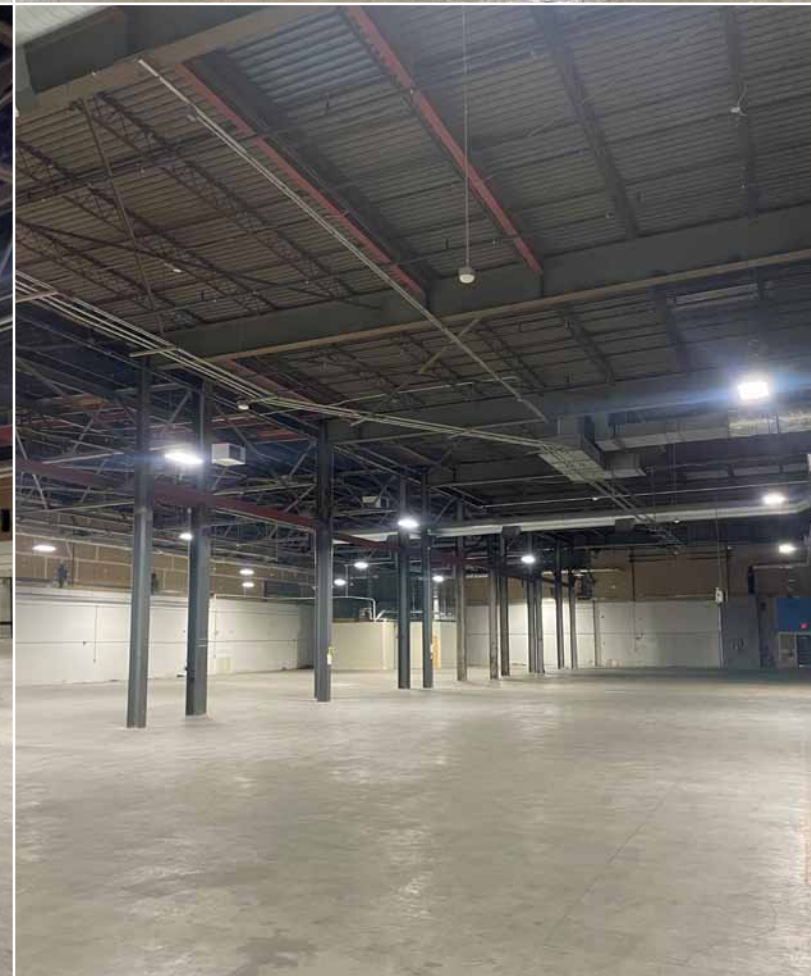
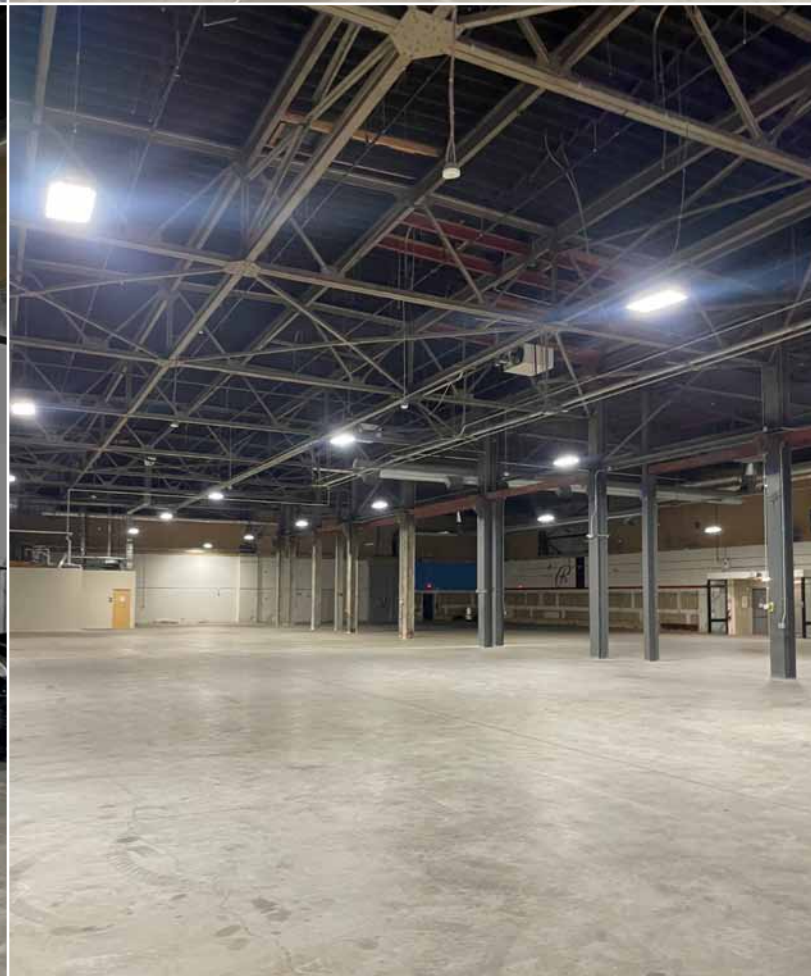
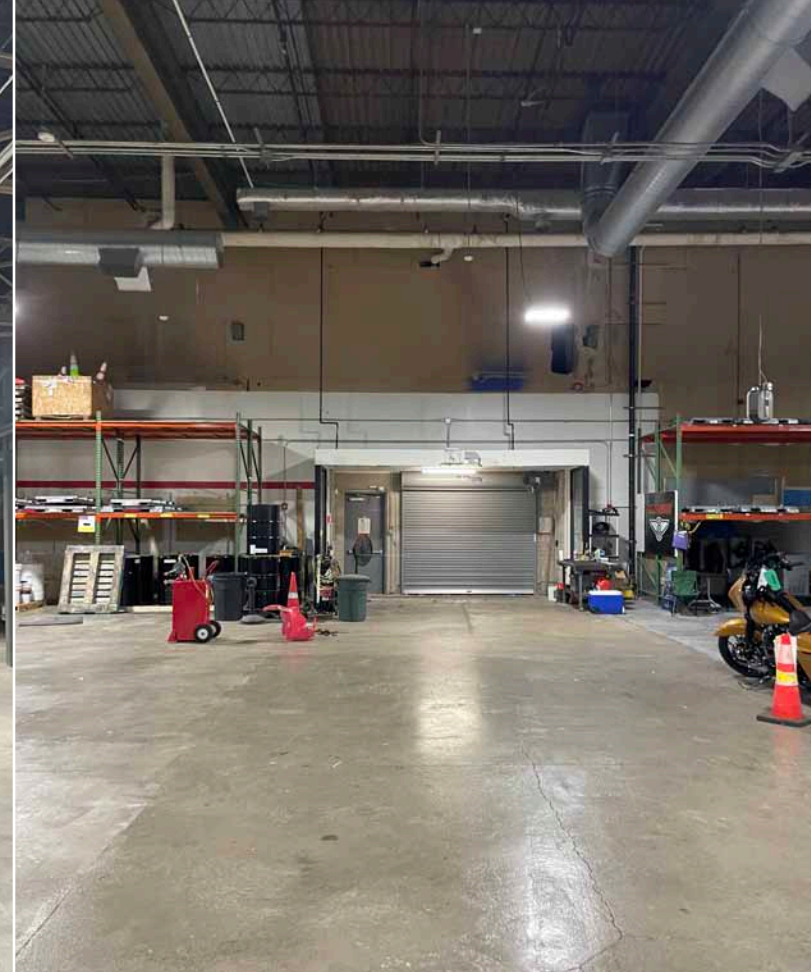
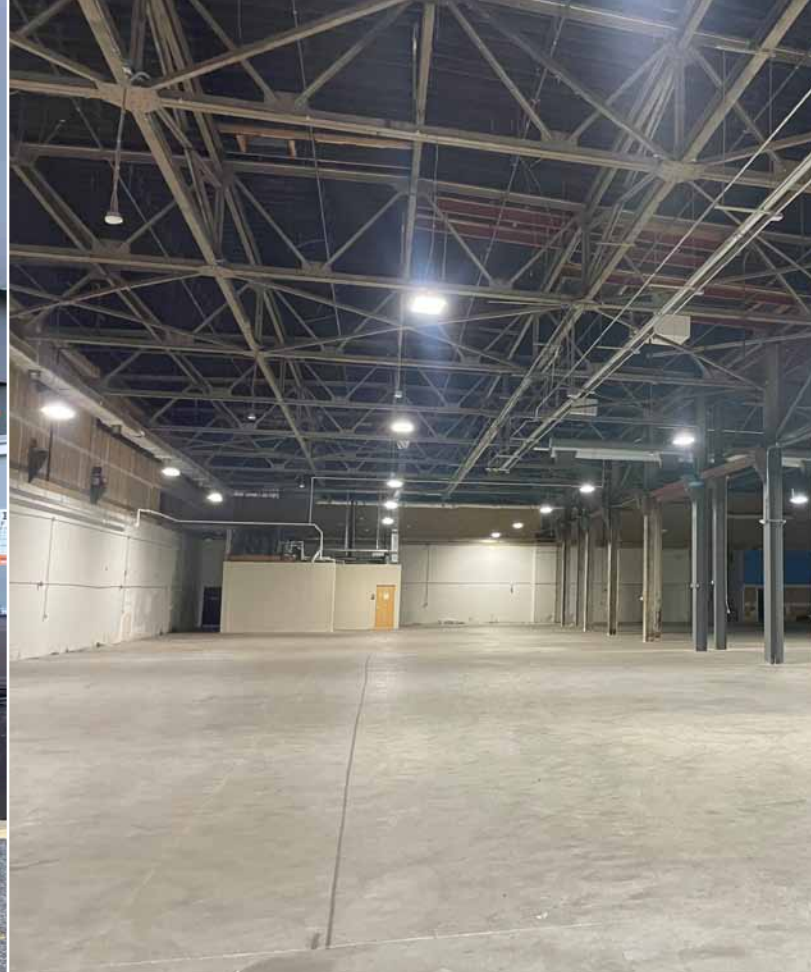
Mike Hotarek
mhotarek@easternretail.com
Direct: 781-849-9017

Sam Peterson
speterson@easternretail.com
Direct: 781-849-9016

Tommy Landry
tlandry@easternretail.com
Direct: 781-849-9015

The information above has been obtained from sources believed reliable. While we do not doubt its accuracy, we have not verified it and make no guarantee, warranty or representation about it. It is your responsibility to independently confirm its accuracy and completeness. Any projections, opinions, assumptions or estimates used are for example only and do not represent the current or future performance of the property. The value of this transaction to you depends on tax and other factors, which should be evaluated by your tax and financial advisors. You and your advisors should conduct a careful, independent investigation of the property to determine to your satisfaction, the suitability of the property for your needs.





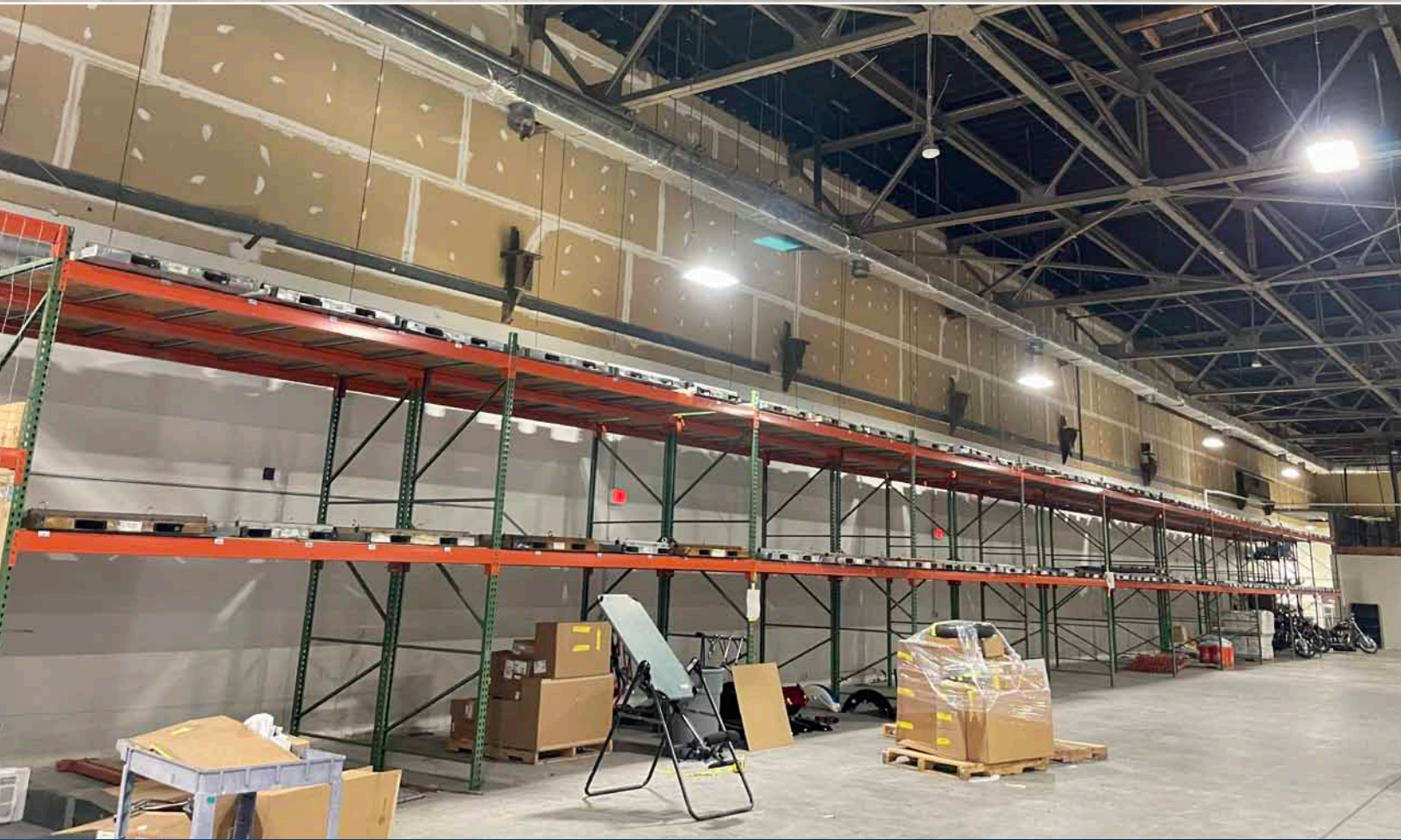
Mike Hotarek
mhotarek@easternretail.com
Direct: 781-849-9017

Sam Peterson
speterson@easternretail.com
Direct: 781-849-9016

Tommy Landry
tlandry@easternretail.com
Direct: 781-849-9015

The information above has been obtained from sources believed reliable. While we do not doubt its accuracy, we have not verified it and make no guarantee, warranty or representation about it. It is your responsibility to independently confirm its accuracy and completeness. Any projections, opinions, assumptions or estimates used are for example only and do not represent the current or future performance of the property. The value of this transaction to you depends on tax and other factors, which should be evaluated by your tax and financial advisors. You and your advisors should conduct a careful, independent investigation of the property to determine to your satisfaction, the suitability of the property for your needs.



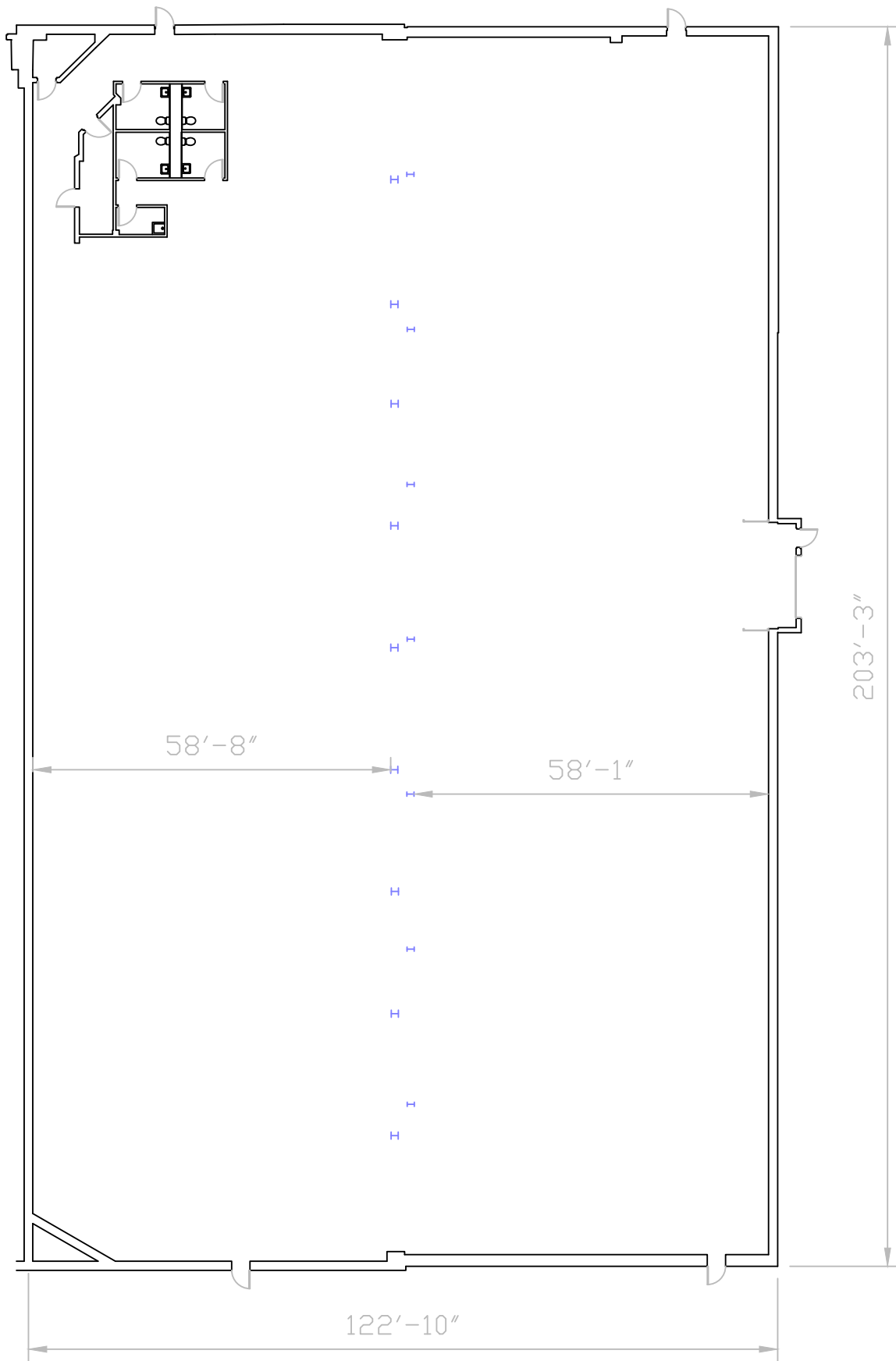


Mike Hotarek
mhotarek@easternretail.com
Direct: 781-849-9017

Sam Peterson
speterson@easternretail.com
Direct: 781-849-9016

Tommy Landry
tlandry@easternretail.com
Direct: 781-849-9015





1 WESLEY ST, MALDEN, MA
 WAREHOUSE - 25,095 SF

Mike Hotarek
 mhotarek@easternretail.com
 Direct: 781-849-9017

Sam Peterson
 speterson@easternretail.com
 Direct: 781-849-9016

Tommy Landry
 tlandry@easternretail.com
 Direct: 781-849-9015





EASTERN
RETAIL PROPERTIES

Mike Hotarek

mhotarek@easternretail.com

Direct: 781-849-9017

Sam Peterson

speterson@easternretail.com

Direct: 781-849-9016

Tommy Landry

tlandry@easternretail.com

Direct: 781-849-9015

Phone 781.849.9010 • Fax 781.849.9050 • www.easternretail.com • 25 Braintree Hill Office Park, Suite 404 • Braintree, MA 02184

The information above has been obtained from sources believed reliable. While we do not doubt its accuracy, we have not verified it and make no guarantee, warranty or representation about it. It is your responsibility to independently confirm its accuracy and completeness. Any projections, opinions, assumptions or estimates used are for example only and do not represent the current or future performance of the property. The value of this transaction to you depends on tax and other factors, which should be evaluated by your tax and financial advisors. You and your advisors should conduct a careful, independent investigation of the property to determine to your satisfaction, the suitability of the property for your needs.