

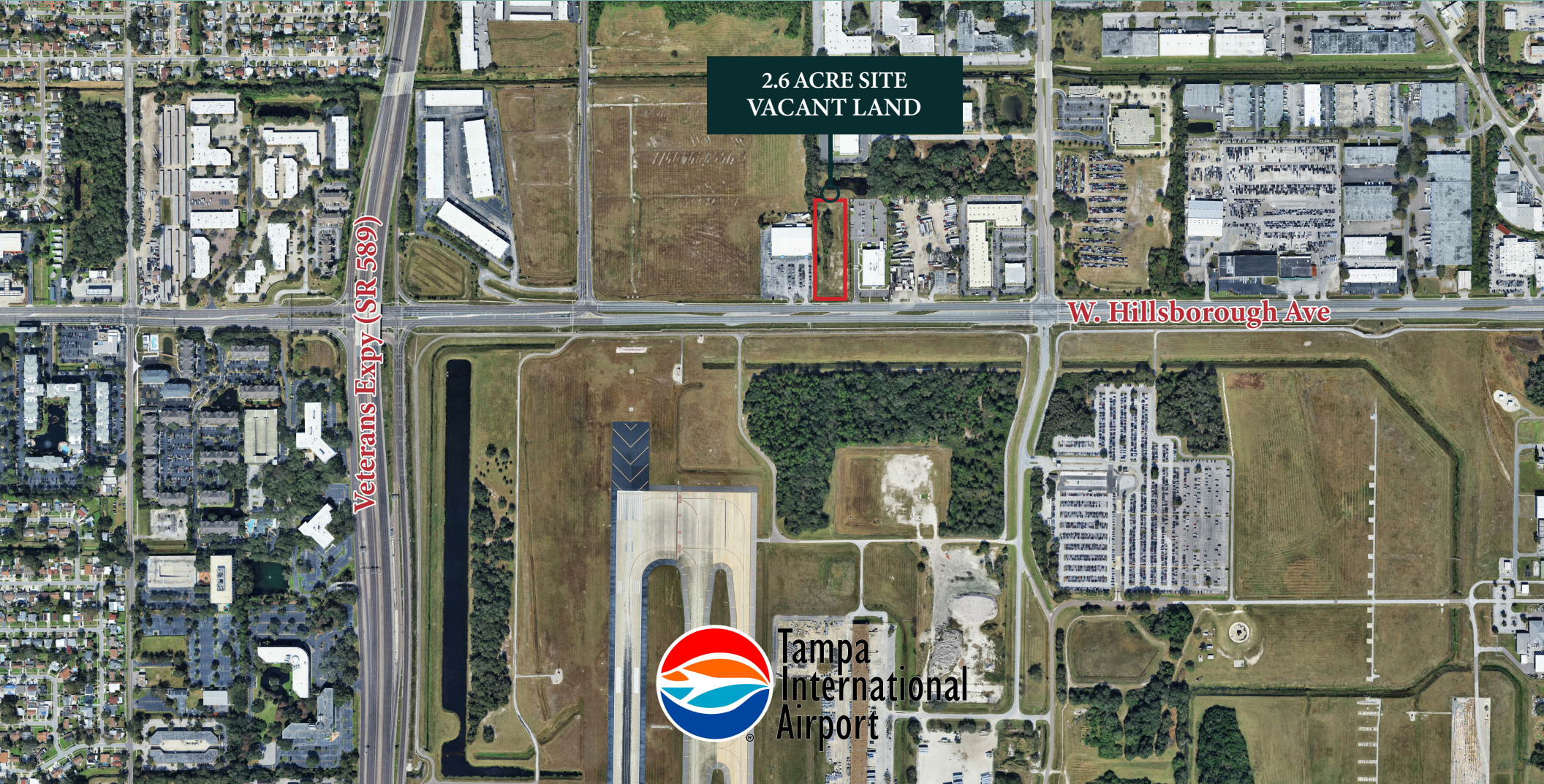
Prime 2.6 Acre Site



West Tampa Airport Infill Location
Many Allowed Uses

W. Hillsborough Ave
Tampa, FL 33634
www.wssallc.com

Sale or Lease Build to Suit

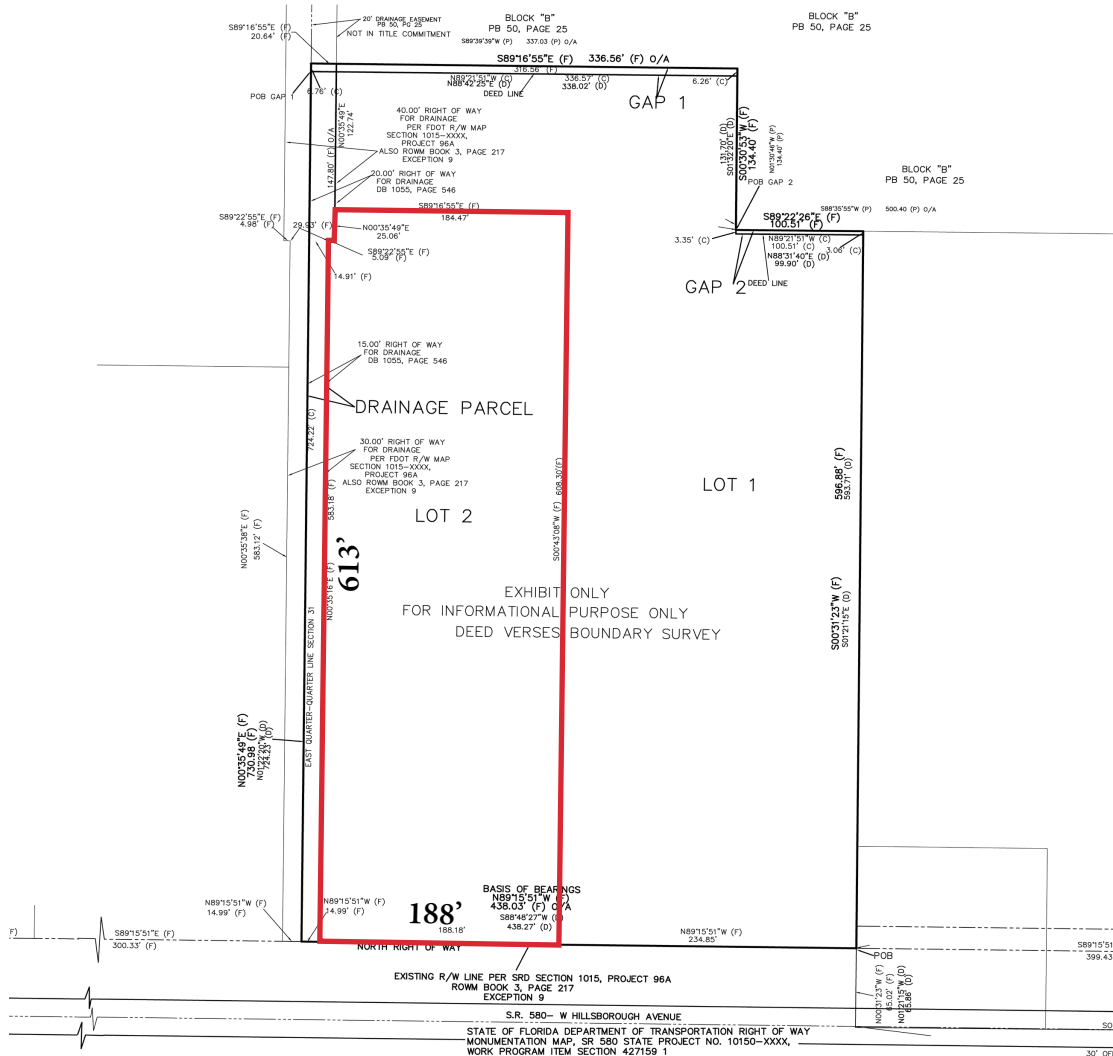




Executive Summary

The property is located on W. Hillsborough Ave, offering excellent access to the Tampa International Airport (TIA), SR 589 Veterans Expressway, I-4, I-75, and I-275, ensuring seamless connectivity to the state's key transportation networks. Its proximity to the Port of Tampa, nearby logistic hub, and the area's population center makes it an ideal location for manufacturing, e-commerce, and distribution operations.

Property Information	
Price:	Unpriced
Address:	W. Hillsborough Ave
City, State:	Tampa, FL
County:	Hillsborough
Parcel ID:	027651-0055
Site Size (Acres):	2.6
Current Zoning:	SPI-AP-4
Future Land Use:	LI
Utilities:	Water, Sewer, Electric
Daily Traffic Count:	61,586 on W. Hillsborough 102,130 on Veterans Expy (SR 589)
Frontage:	188' on W. Hillsborough Ave





Contact



TROY FARAH
Principal
(810) 691-9041
tfarah@wssallc.com

VICTOR ALAM
Executive Assistant
(810) 869-6293
valam@wssallc.com

Disclaimer

The information contained in the Offering Memorandum has been prepared to provide a summary of unverified information to prospective buyers or tenants and to establish only a preliminary level of interest in the subject property. The information contained herein is not a substitute for a thorough due diligence investigation.

503 S. Saginaw St. Suite 600
Flint, Michigan 48502
Main (810) 239-1551
wssallc.com