



# *TUSCAN VILLAGE*

*WINTER HAVEN, FLORIDA*

GOLDENHOLZ & ASSOCIATES ARCHITECTS & PLANNERS P.A.

3122 NORTH PINE ISLAND ROAD, SUNRISE, FLORIDA 33351 TEL. (954) 742-0797 FAX (954) 742-3093

Email: [ltamar@goldenholz.com](mailto:ltamar@goldenholz.com)

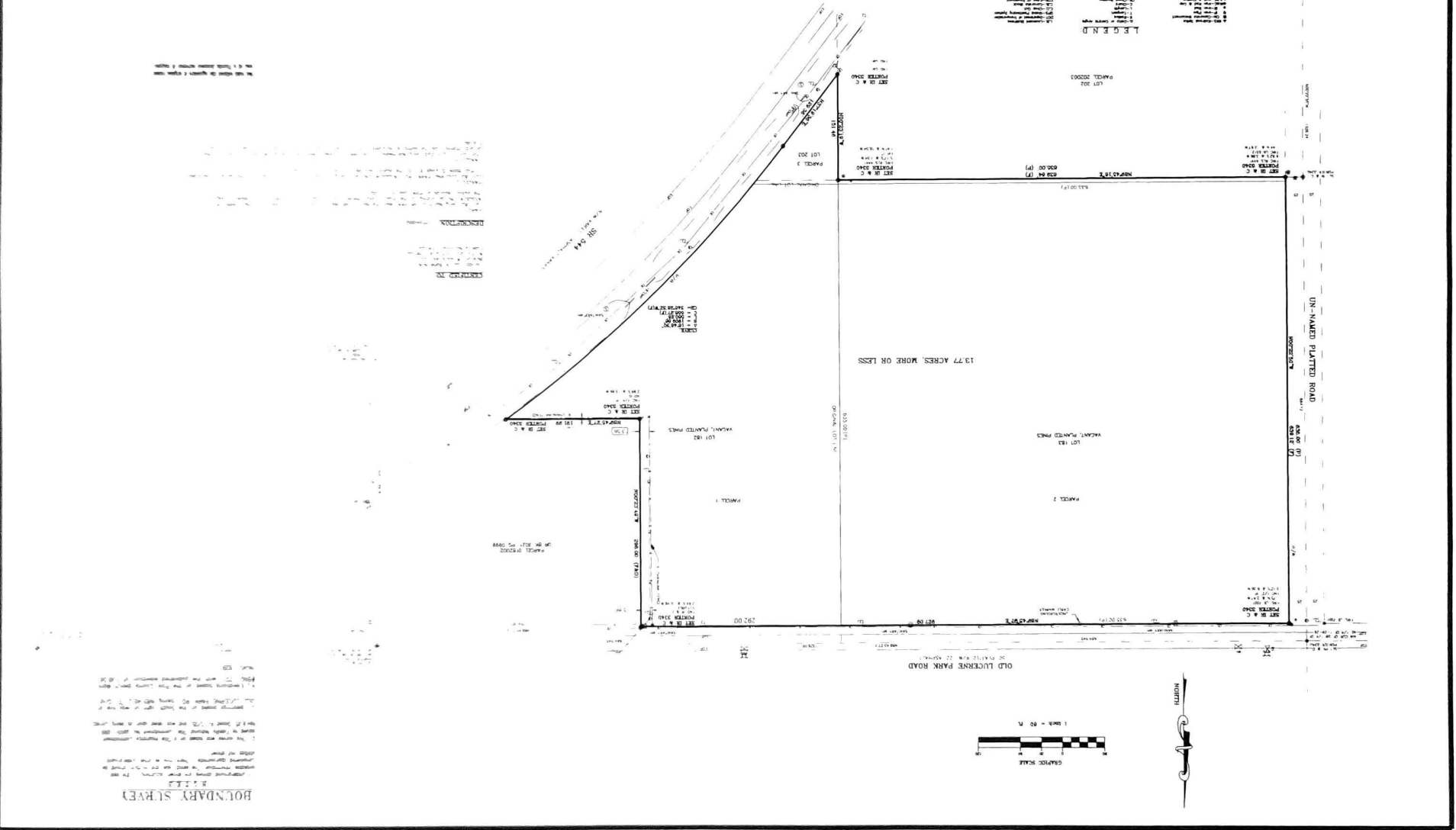


**PORTER GEOGRAPHICAL POSITIONING & SURVEYING**  
 21 NORTH ALBANY ST. SUITE 200  
 ALBANY, N.Y. 12207  
 TEL: 518/486-1111  
 FAX: 518/486-1112  
 WWW: WWW.PGASURVEYING.COM

**HARPORT ASSOCIATES, LLC**  
 3000 W. BURGESS ST. SUITE 100  
 ALBANY, N.Y. 12206  
 TEL: 518/486-1111  
 FAX: 518/486-1112

NO.	REVISION DATE	DESCRIPTION
1	01/10/05	REV NOTE 2 CHANGED FROM PROVISION

- LEGEND**
- 1.00' Contour Interval
  - 2.00' Contour Interval
  - 3.00' Contour Interval
  - 4.00' Contour Interval
  - 5.00' Contour Interval
  - 6.00' Contour Interval
  - 7.00' Contour Interval
  - 8.00' Contour Interval
  - 9.00' Contour Interval
  - 10.00' Contour Interval
  - 11.00' Contour Interval
  - 12.00' Contour Interval
  - 13.00' Contour Interval
  - 14.00' Contour Interval
  - 15.00' Contour Interval
  - 16.00' Contour Interval
  - 17.00' Contour Interval
  - 18.00' Contour Interval
  - 19.00' Contour Interval
  - 20.00' Contour Interval
  - 21.00' Contour Interval
  - 22.00' Contour Interval
  - 23.00' Contour Interval
  - 24.00' Contour Interval
  - 25.00' Contour Interval
  - 26.00' Contour Interval
  - 27.00' Contour Interval
  - 28.00' Contour Interval
  - 29.00' Contour Interval
  - 30.00' Contour Interval
  - 31.00' Contour Interval
  - 32.00' Contour Interval
  - 33.00' Contour Interval
  - 34.00' Contour Interval
  - 35.00' Contour Interval
  - 36.00' Contour Interval
  - 37.00' Contour Interval
  - 38.00' Contour Interval
  - 39.00' Contour Interval
  - 40.00' Contour Interval
  - 41.00' Contour Interval
  - 42.00' Contour Interval
  - 43.00' Contour Interval
  - 44.00' Contour Interval
  - 45.00' Contour Interval
  - 46.00' Contour Interval
  - 47.00' Contour Interval
  - 48.00' Contour Interval
  - 49.00' Contour Interval
  - 50.00' Contour Interval



**BOUNDARY SURVEY**  
 This plat shows the boundary between the parcels shown here and the parcels shown on the adjacent plat of the same date. The boundary is shown by a solid line. The survey was conducted on 01/10/05. The survey was conducted by Porter Geographical Positioning & Surveying, Inc. The survey was conducted in accordance with the standards of the International Geomatics Association. The survey was conducted in accordance with the standards of the International Geomatics Association. The survey was conducted in accordance with the standards of the International Geomatics Association.

