

# Office/Warehouse

8213 N Glade Ave  
Oklahoma City, OK 73172

**Lease Rate: \$7.00/SF NNN**



## Highlights

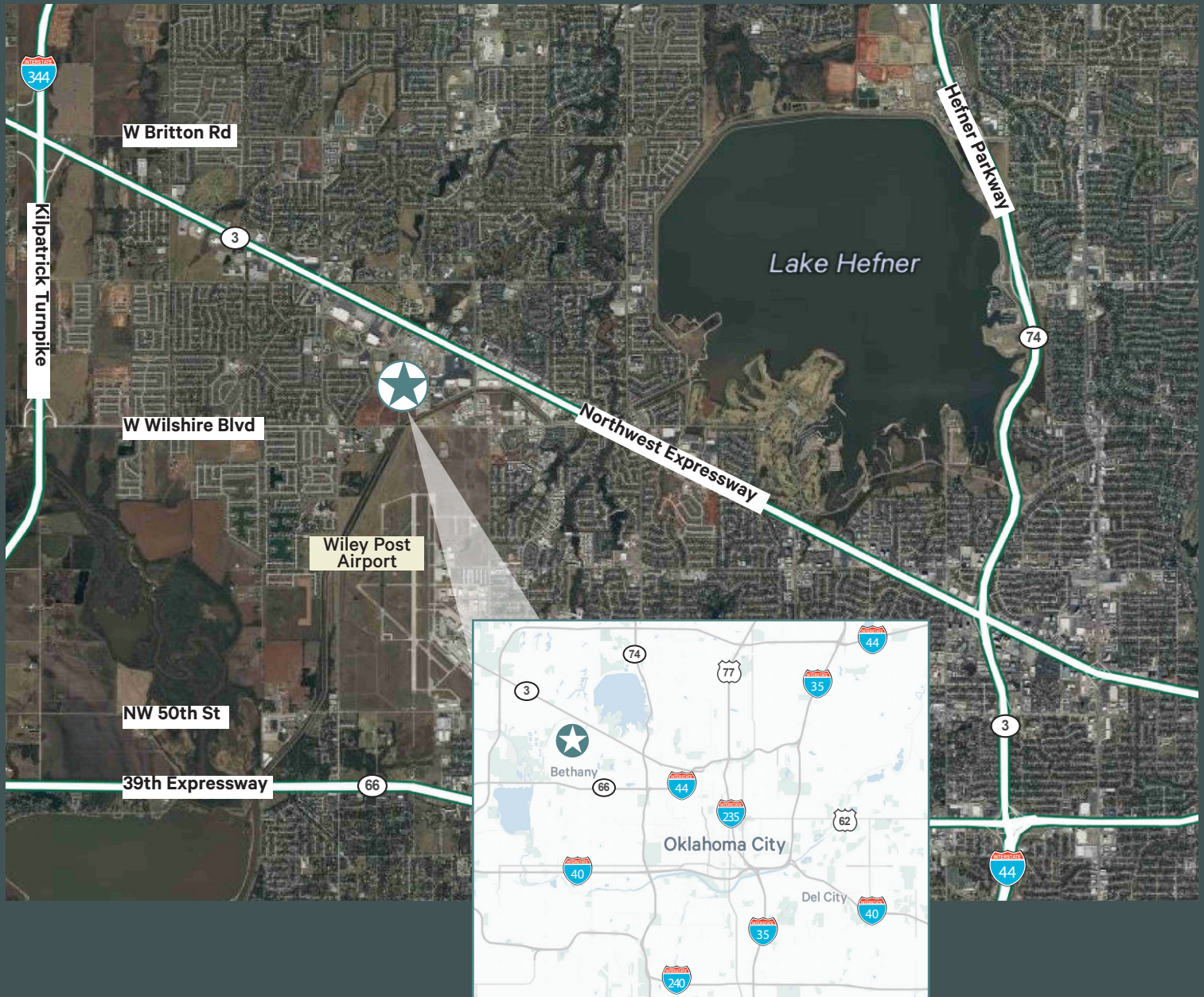
- + 5,625± SF Total
- + 1,850± SF Office
- + .79± Acres
- + I-2 Zoning
- + (4) 12' x 12' Grade Level Doors with Power-Lift
- + 12' Clear Height; Clear Span
- + 200 Amps, 220/120/240 Volts, 3 Phase
- + 8' Metal Wall Liner Panels
- + LED Lighting
- + Gas Space Heating; Radiant heating
- + Security System with Cameras
- + Fenced Storage Area behind Building
- + External Security Lighting
- + Located in Rockwell Industrial Park, near Northwest Expressway/Hwy 3, 39th Expressway/Hwy 66, and Kilpatrick Turnpike/I-344







## Vicinity Map



## Contact Us

**Randy Lacey, SIOR**  
Senior Vice President  
+1 405 607 6062  
randy.lacey@cbre.com

**Chris Zach, SIOR, CPA**  
Vice President  
+1 405 607 6313  
chris.zach@cbre.com