

## Land For Sale

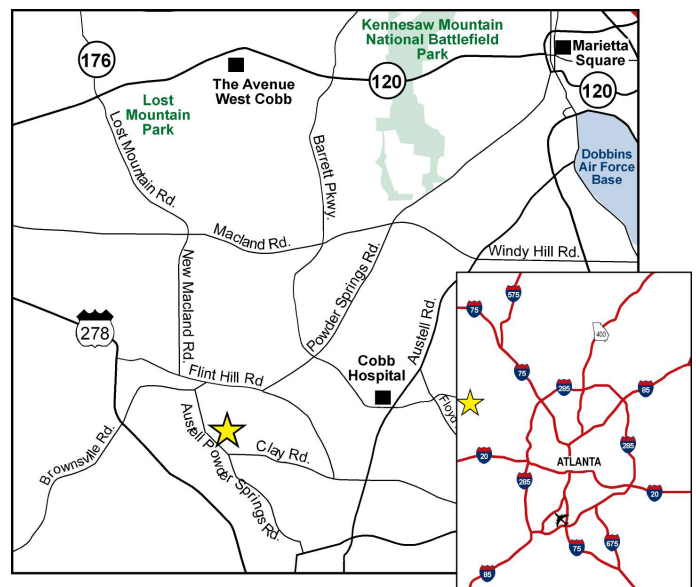
# 18.26± ACRES - FORMER ELEMENTARY SCHOOL

4455 Wesley Drive, Austell, GA 30106



## Property Details

- 18.26± ac for sale - former Clarkdale Elementary School
- Zoned R-20
- The majority of this property is located in the floodplain
- Property is owned by the Cobb County School District and is being marketed without an asking price



**Dan Buyers**  
770.596.2629  
tdb@mcwrealty.com

No warranty or representation, express or implied, is made as to the accuracy of the information contained herein, and same is subject to errors, omissions, change of price, rental or other conditions, withdrawal without notice, and to any special listing conditions, imposed by our principals.

**McWhirter Realty Partners, LLC**  
294 Interstate North Circle, SE  
Building 2, Suite 150  
Atlanta, GA 30339  
770.955.2000  
www.mcwrealty.com



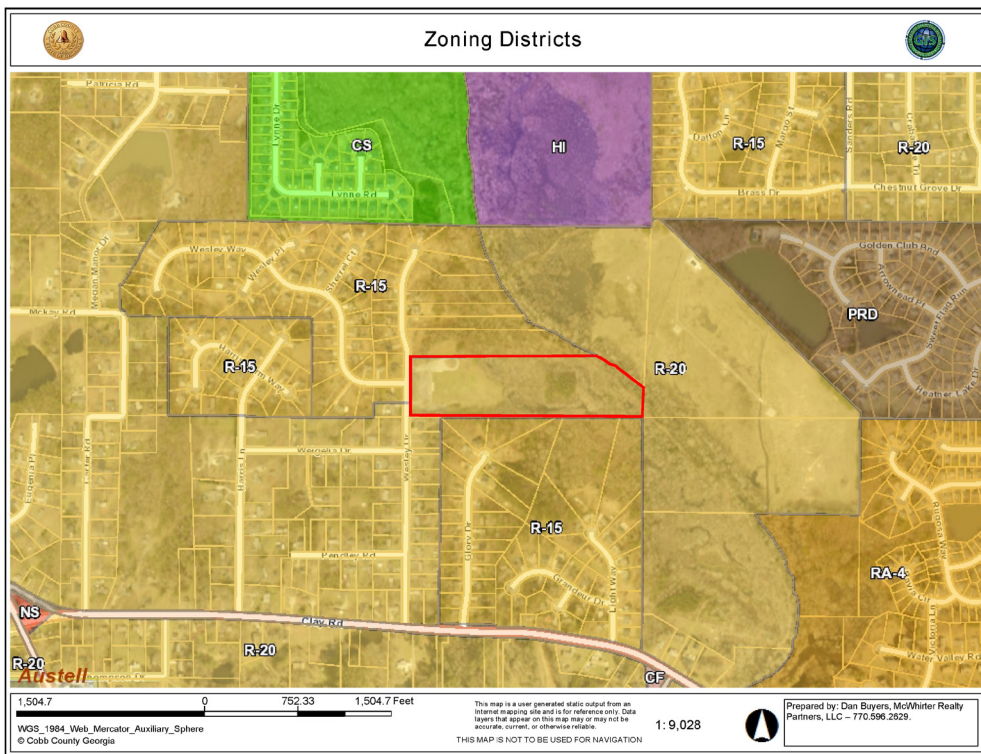
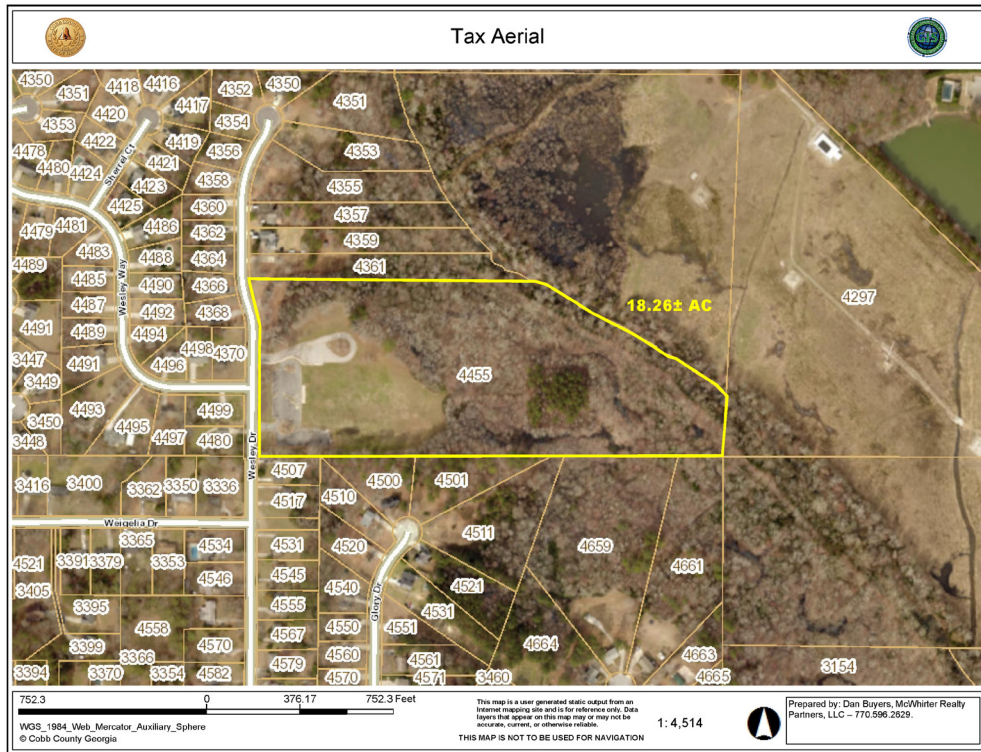
**McWhirter**  
Commercial Real Estate Since 1981



# Land For Sale

# 18.26± ACRES - FORMER ELEMENTARY SCHOOL

4455 Wesley Drive, Austell, GA 30106



**Dan Buyers**  
770.596.2629  
tdb@mcwrealty.com

**McWhirter Realty Partners, LLC**  
294 Interstate North Circle, SE  
Building 2, Suite 150  
Atlanta, GA 30339  
770.955.2000  
www.mcwrealty.com



**McWhirter**  
Commercial Real Estate Since 1981

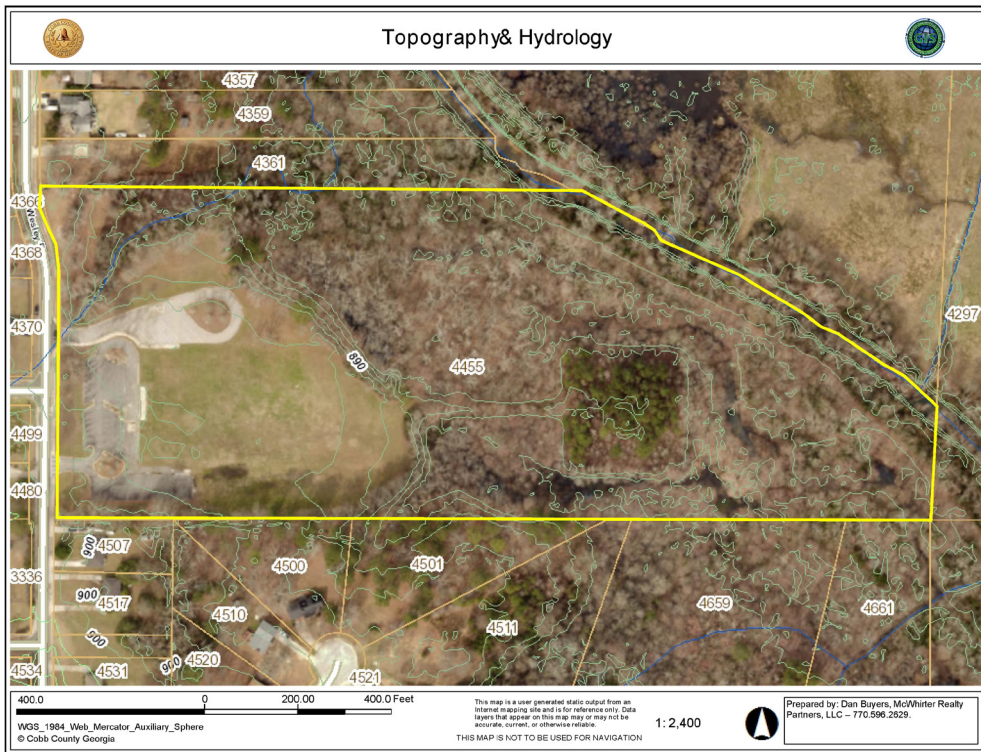
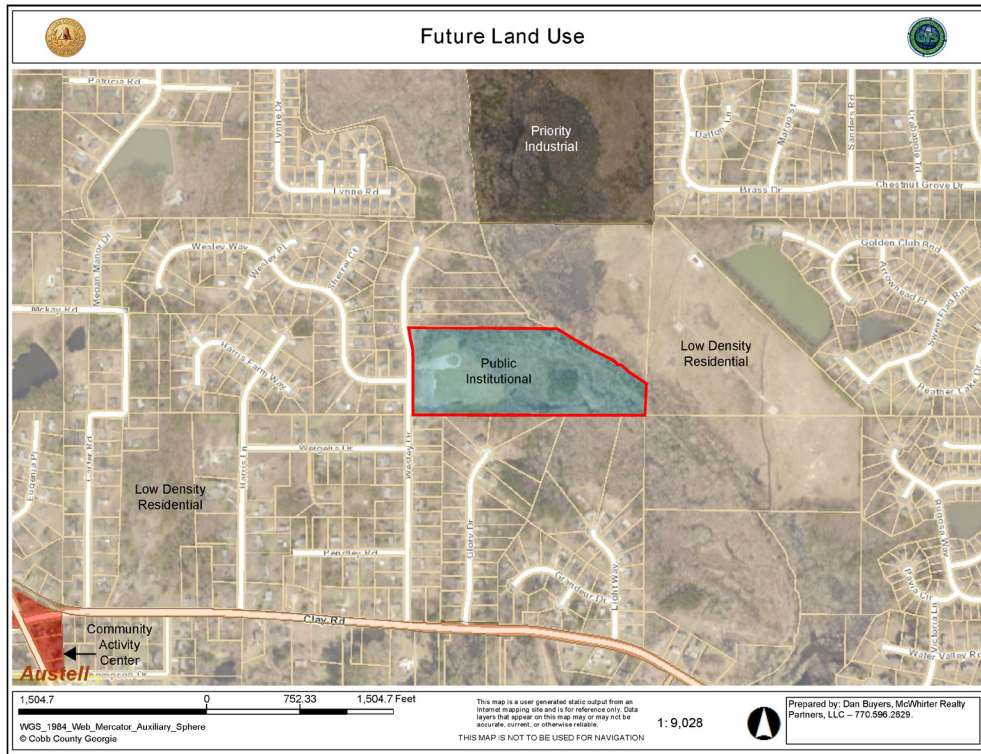
No warranty or representation, express or implied, is made as to the accuracy of the information contained herein, and same is subject to errors, omissions, change of price, rental or other conditions, withdrawal without notice, and to any special listing conditions, imposed by our principals.



# Land For Sale

# 18.26± ACRES - FORMER ELEMENTARY SCHOOL

4455 Wesley Drive, Austell, GA 30106



**Dan Buyers**  
770.596.2629  
tdb@mcwrealty.com

**McWhirter Realty Partners, LLC**  
294 Interstate North Circle, SE  
Building 2, Suite 150  
Atlanta, GA 30339  
770.955.2000  
www.mcwrealty.com



**McWhirter**  
Commercial Real Estate Since 1981

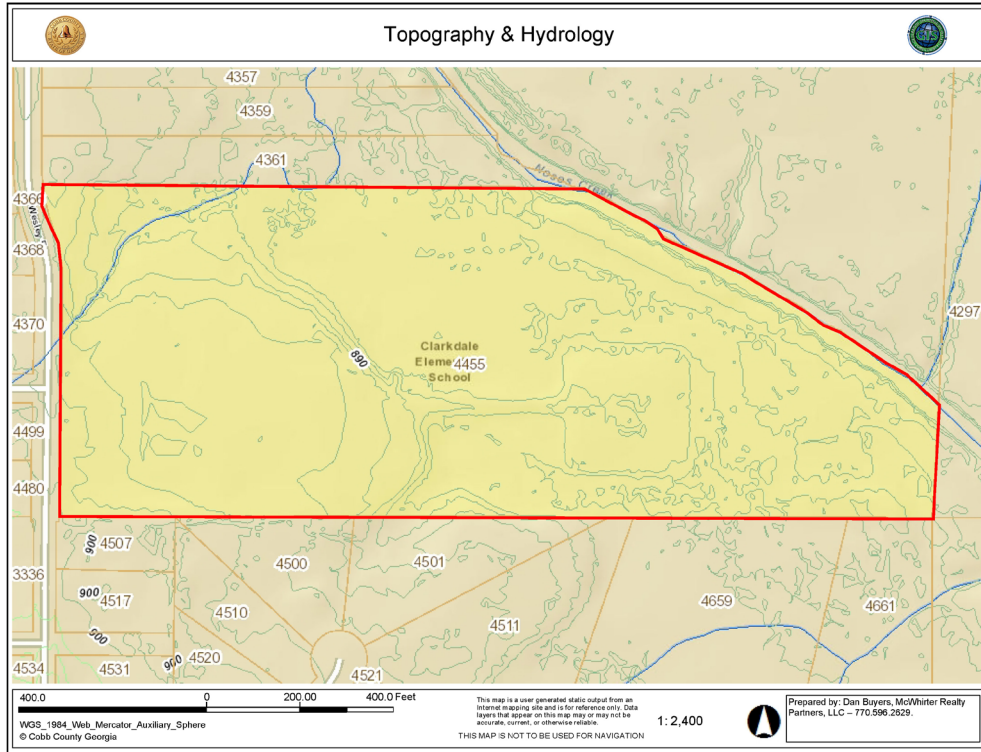
No warranty or representation, express or implied, is made as to the accuracy of the information contained herein, and same is subject to errors, omissions, change of price, rental or other conditions, withdrawal without notice, and to any special listing conditions, imposed by our principals.



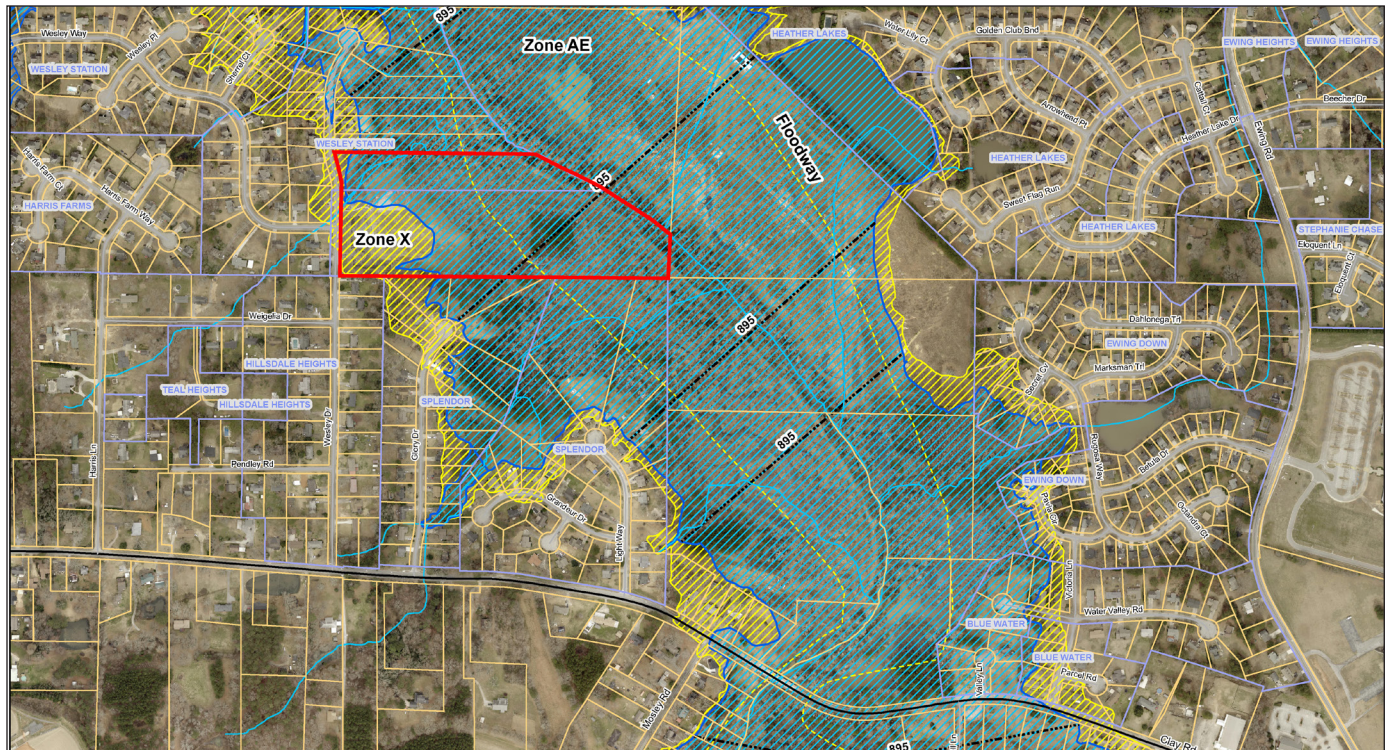
# Land For Sale

# 18.26± ACRES - FORMER ELEMENTARY SCHOOL

4455 Wesley Drive, Austell, GA 30106



## Floodplain



**Dan Buyers**  
770.596.2629  
tdb@mcwrealty.com

No warranty or representation, express or implied, is made as to the accuracy of the information contained herein, and same is subject to errors, omissions, change of price, rental or other conditions, withdrawal without notice, and to any special listing conditions, imposed by our principals.

**McWhirter Realty Partners, LLC**  
300 Galleria Parkway, Suite 300  
Atlanta, GA 30339  
770.955.2000  
www.mcwrealty.com



**McWhirter**  
Commercial Real Estate Since 1981