

FOR LEASE

# MANUFACTURING/DOCK HIGH WAREHOUSE

2901 South Madison | Wichita, Kansas 67216



**Lease Rate: \$3.60/SF, Industrial Gross**

**Building Size:** 99,110 SF

**Available Space:** 66,000 SF

**Year Built:** 1953, 1974, 2004

**Zoning:** Limited Industrial

**Construction:** Brick and Block

**Parking:** 76+/- spaces

**Ceiling Height:** 14' - 18'

**Column Spacing:** 24' x 24'

**Total Dock Doors:** 14

**Total Overhead Doors:** 1 with ramp

**2018 Taxes:**

Generals: \$43,779.41

Specials: \$7.87

**Highlights:**

- Dock high office/warehouse space available for lease located in close proximity to I-135 and I-235 access.
- Lots of Power.

For Information, Please Contact:

**Grant Tidemann, SIOR**  
Direct: 316-292-3908  
[tidemann@weigand.com](mailto:tidemann@weigand.com)

**Bradley Tidemann, SIOR**  
Direct: 316-292-3947  
[btidemann@weigand.com](mailto:btidemann@weigand.com)



# INTERIOR PHOTOS

FOR LEASE

# MANUFACTURING/DOCK HIGH WAREHOUSE

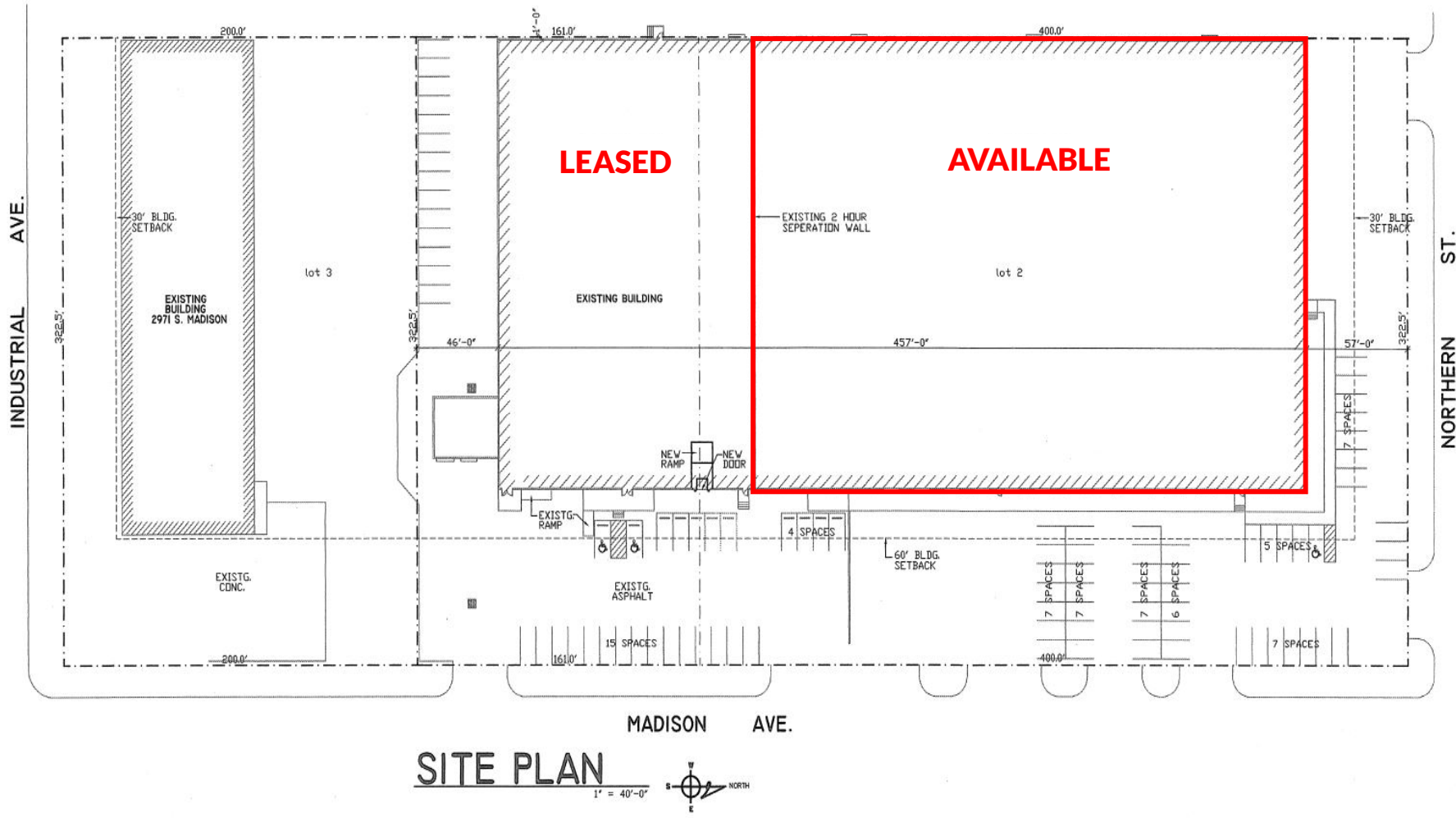
2901 South Madison | Wichita, Kansas 67216



All information furnished regarding property for sales, rent, exchange or financing is from sources deemed reliable but no guarantee is made or responsibility assumed as to its accuracy or completeness and you are advised to make your own analysis and verification. Broker hereby notifies prospective buyer/lessee that (a) Broker will be acting as an agent of seller/lessor with the duty to represent seller/lessor's interest; (b) Broker will not be the agent of buyer/lessee; and (c) Information given to Broker will be disclosed to seller/lessor.

# SITE PLAN

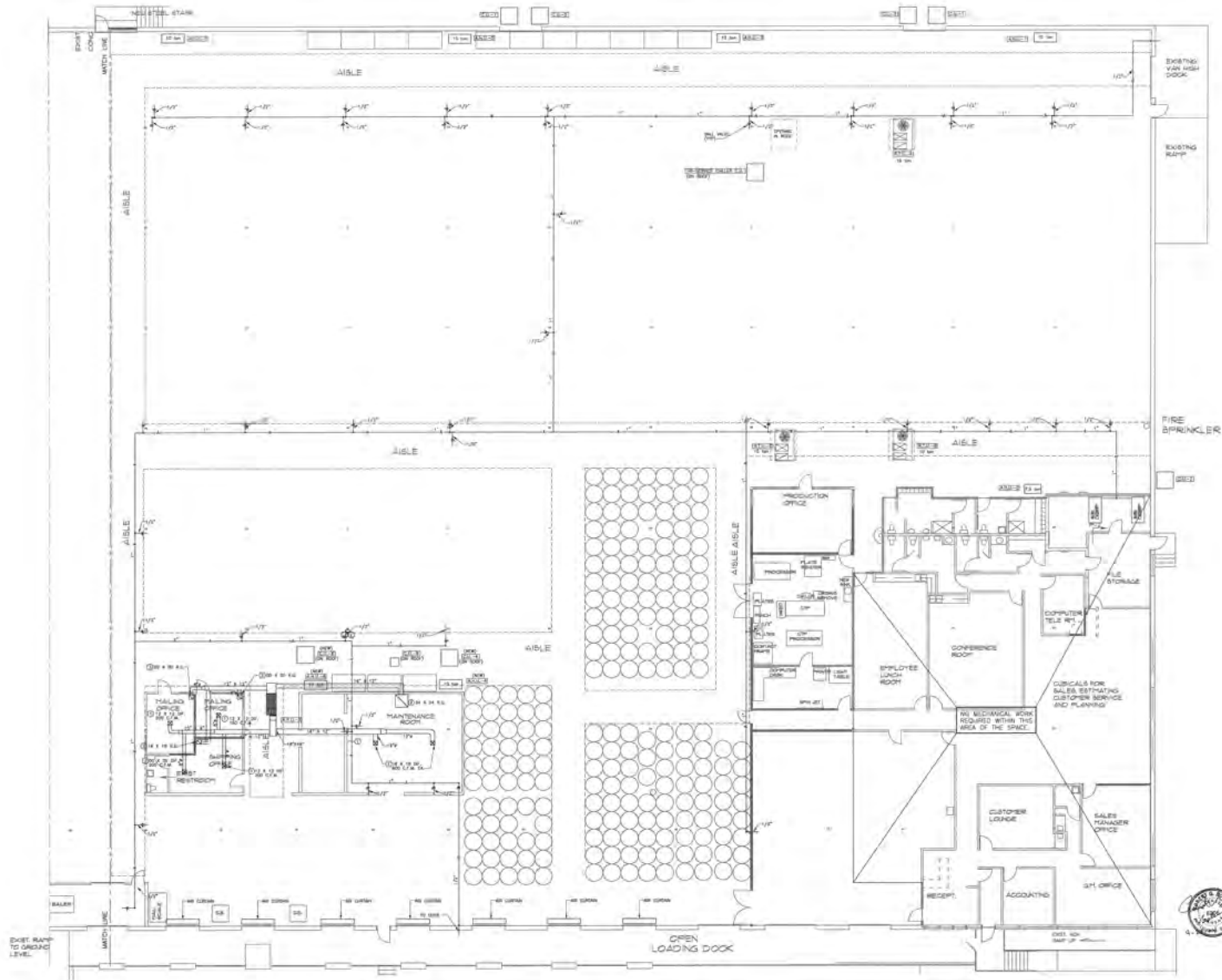
FOR LEASE  
MANUFACTURING/DOCK HIGH WAREHOUSE  
2901 South Madison | Wichita, Kansas 67216



All information furnished regarding property for sales, rent, exchange or financing is from sources deemed reliable but no guarantee is made or responsibility assumed as to its accuracy or completeness and you are advised to make your own analysis and verification. Broker hereby notifies prospective buyer/lessee that (a) Broker will be acting as an agent of seller/lessor with the duty to represent seller/lessor's interest; (b) Broker will not be the agent of buyer/lessee; and (c) Information given to Broker will be disclosed to seller/lessor.

# BUILDING PLAN

FOR LEASE  
MANUFACTURING/DOCK HIGH WAREHOUSE  
2901 South Madison | Wichita, Kansas 67216



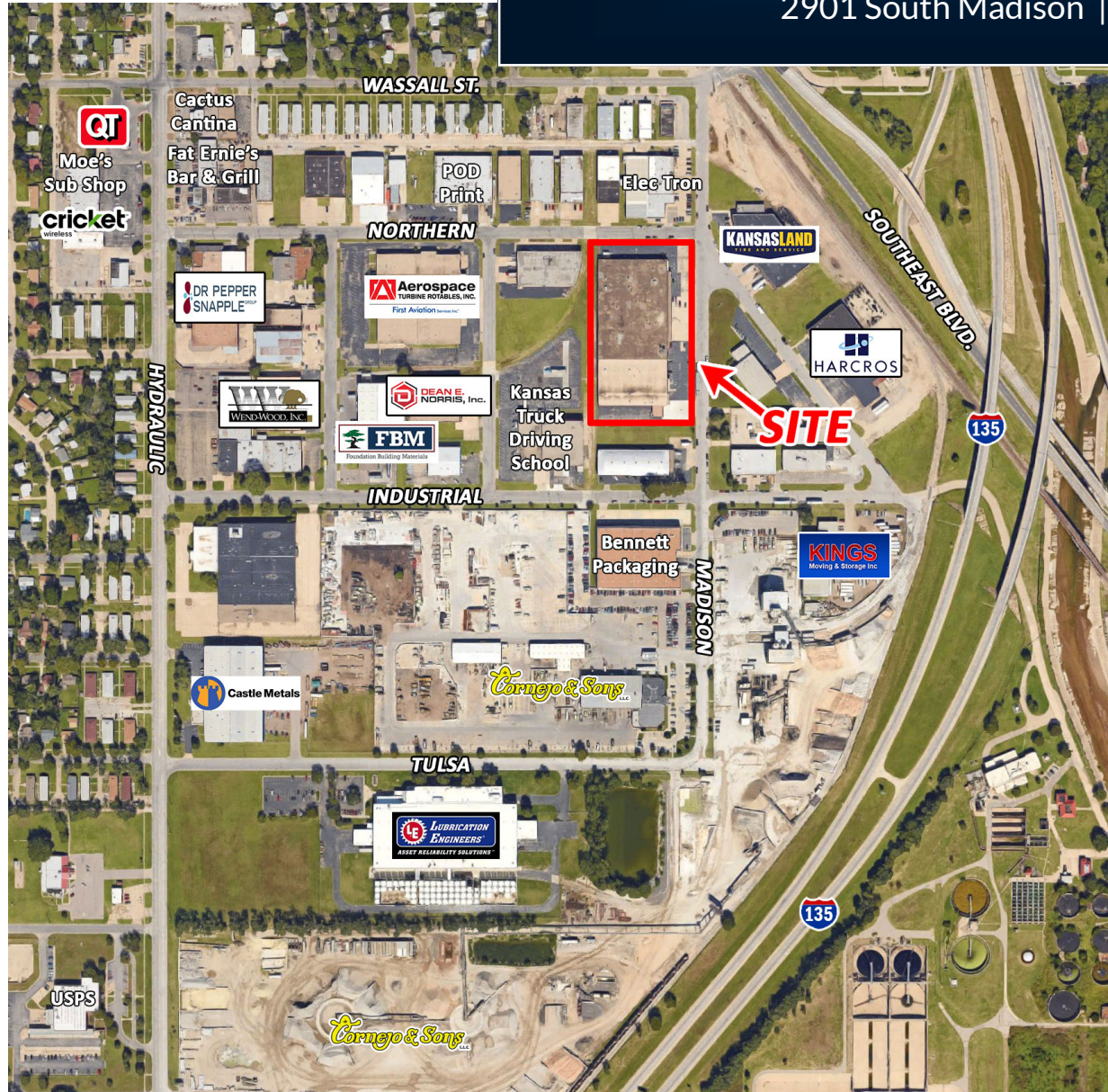
All information furnished regarding property for sales, rent, exchange or financing is from sources deemed reliable but no guarantee is made or responsibility assumed as to its accuracy or completeness and you are advised to make your own analysis and verification. Broker hereby notifies prospective buyer/lessee that (a) Broker will be acting as an agent of seller/lessor with the duty to represent seller/lessor's interest; (b) Broker will not be the agent of buyer/lessee; and (c) Information given to Broker will be disclosed to seller/lessor.

# AERIAL VIEW

FOR LEASE

## MANUFACTURING/DOCK HIGH WAREHOUSE

2901 South Madison | Wichita, Kansas 67216



All information furnished regarding property for sales, rent, exchange or financing is from sources deemed reliable but no guarantee is made or responsibility assumed as to its accuracy or completeness and you are advised to make your own analysis and verification. Broker hereby notifies prospective buyer/lessee that (a) Broker will be acting as an agent of seller/lessor with the duty to represent seller/lessor's interest; (b) Broker will not be the agent of buyer/lessee; and (c) Information given to Broker will be disclosed to seller/lessor.