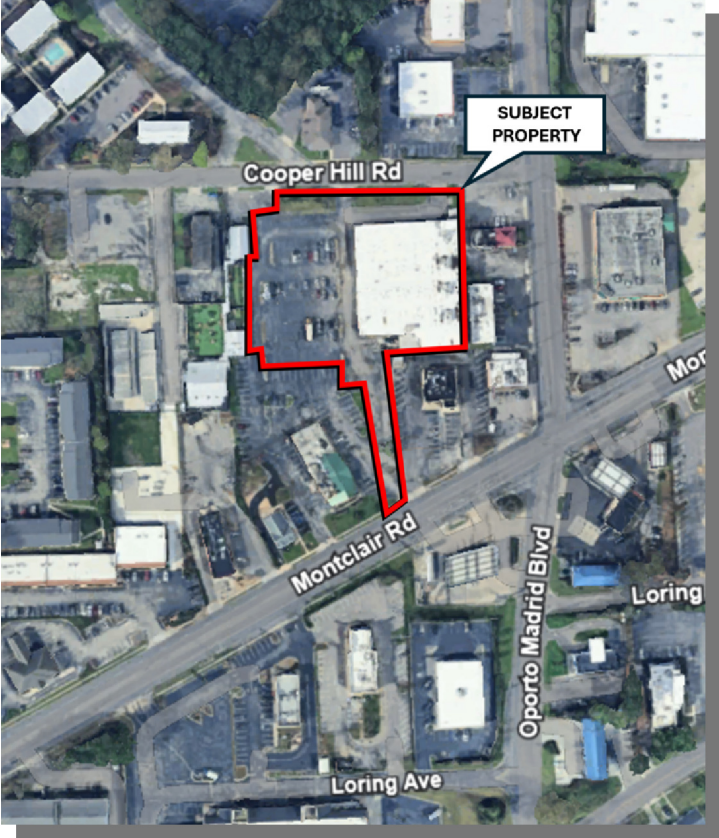




**1569 COOPER HILL RD**  
IRONDALE, AL 35210

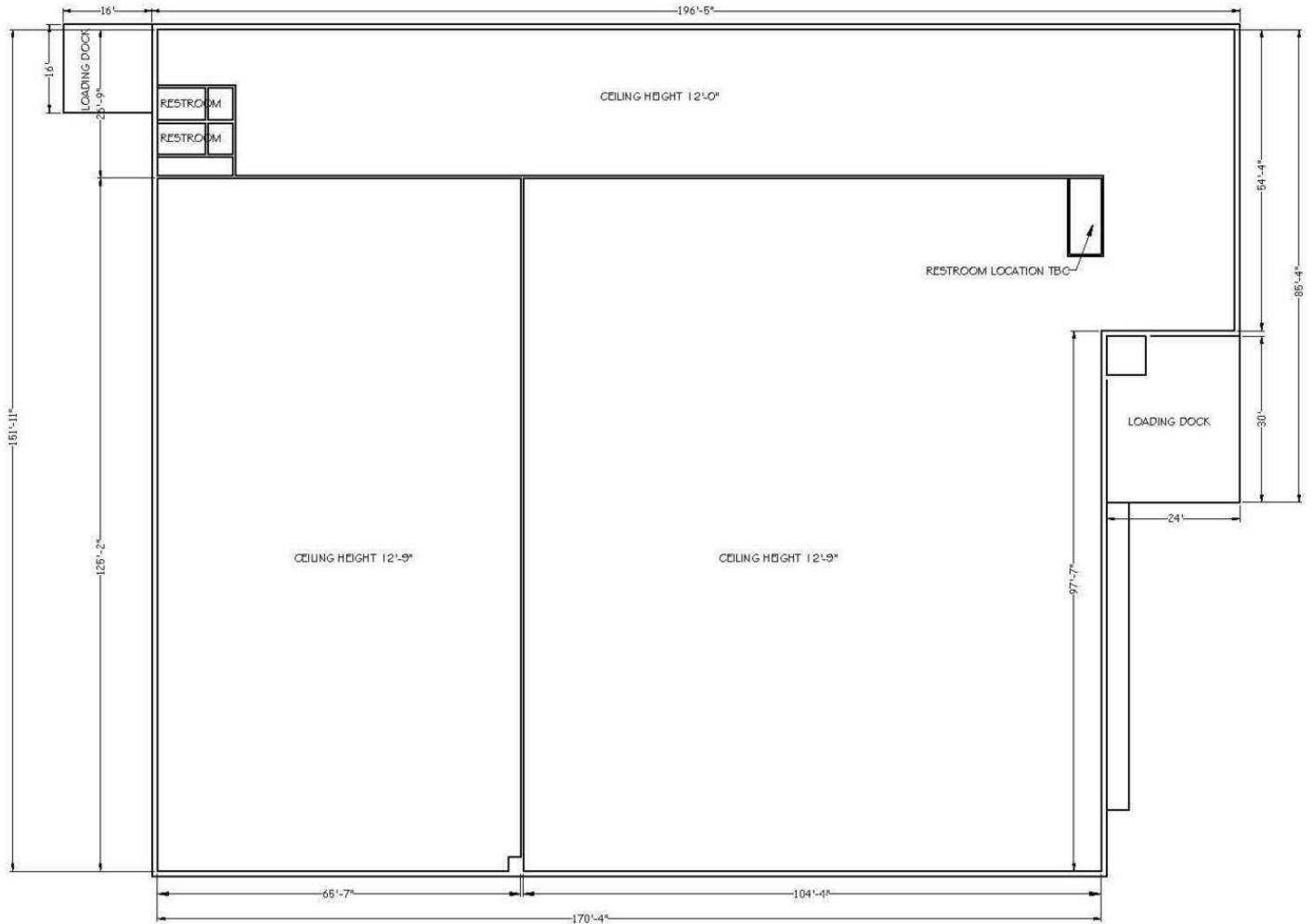
**PROPERTY FEATURES**

- Available: 31,864 SF on 2.16 AC
- One van height loading dock with one (1) a 5' x 8' roll up door
- Two dock high loading docks with one (1) to a 8' x 8' roll up door
- Ceiling height: 9' up to 13'
- Full conditioned space
- Conveniently located off of Montclair road in Eastwood
- 101 on-site parking spaces
- Building signage available



**SALES PRICE:**  
**\$2,300,000**

**Christopher Thames, SIOR, CCIM, CPM®**  
cthames@jhberry.com  
205.313.4378



Available: 31,864 SF

**Christopher Thames, SIOR, CCIM, CPM®**

cthames@jhberr.com

205.313.4378