

EmeryTech

1400 65th St Emeryville, CA

EMERYVILLE'S PREMIER OFFICE CONVERSION

CONOR RANAHA

Managing Director
conor.ranahan@nrmk.com
t 925-899-6699
RE Lic #01850797

BILL BENTON

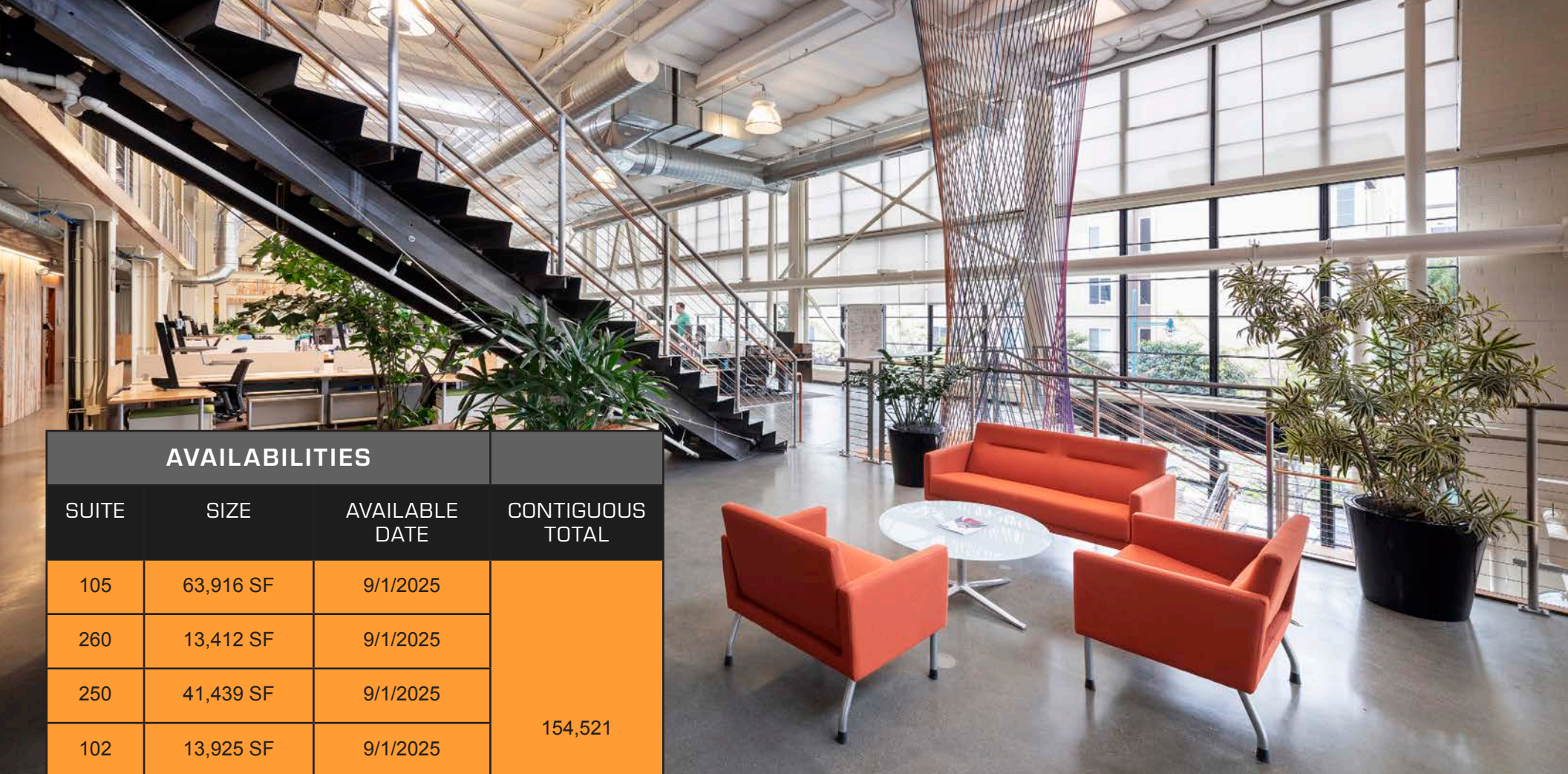
Vice Chairman
bill.benton@nrmk.com
t 415-806-2455
RE Lic #01247617



NEWMARK



EQ Office



AVAILABILITIES			
SUITE	SIZE	AVAILABLE DATE	CONTIGUOUS TOTAL
105	63,916 SF	9/1/2025	154,521
260	13,412 SF	9/1/2025	
250	41,439 SF	9/1/2025	
102	13,925 SF	9/1/2025	
225	15,800 SF	9/1/2025	
350	6,029 SF	9/1/2025	
200	16,441 SF	Now	21,625
300	5,184 SF	9/1/2025	
130	10,894 SF	9/1/2025	

PROPERTY HIGHLIGHTS

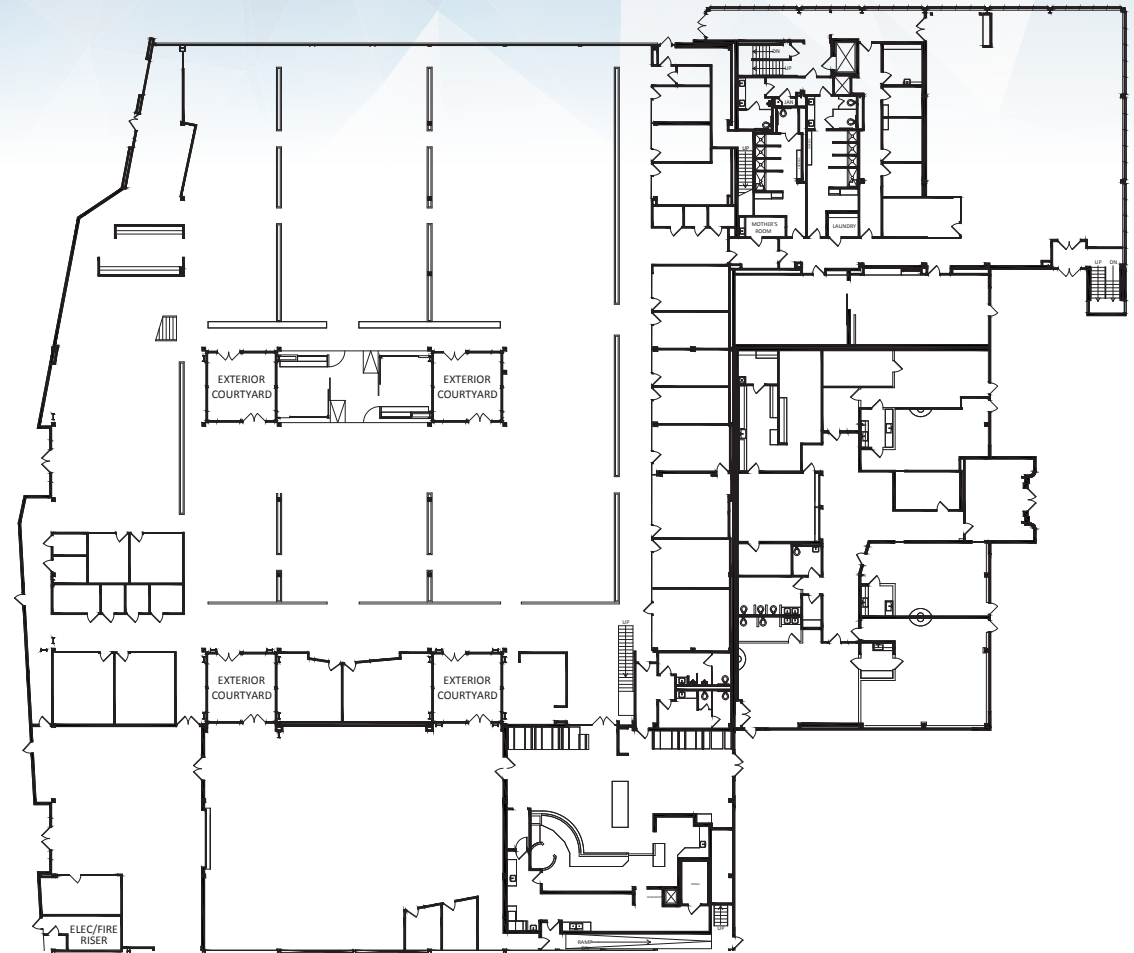
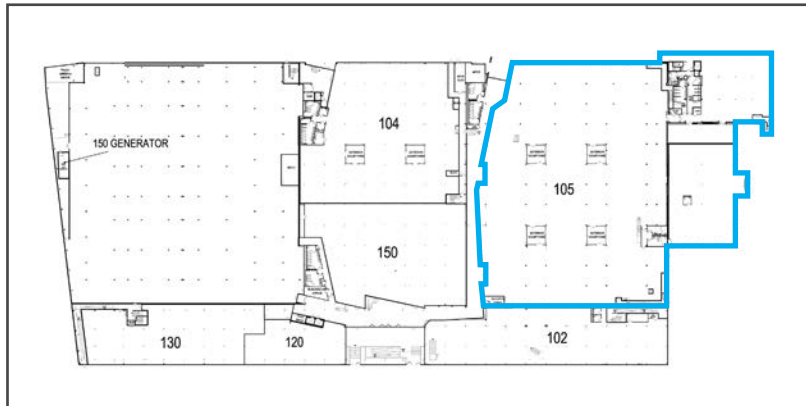
- ◆ Emeryville's Premier Creative Office Building
- ◆ LEED Gold
- ◆ Abundant natural light
- ◆ Ample structured parking (3/1,000)
- ◆ 24/7 Security

FLOORPLAN

SUITE 105 | 63,916 RSF



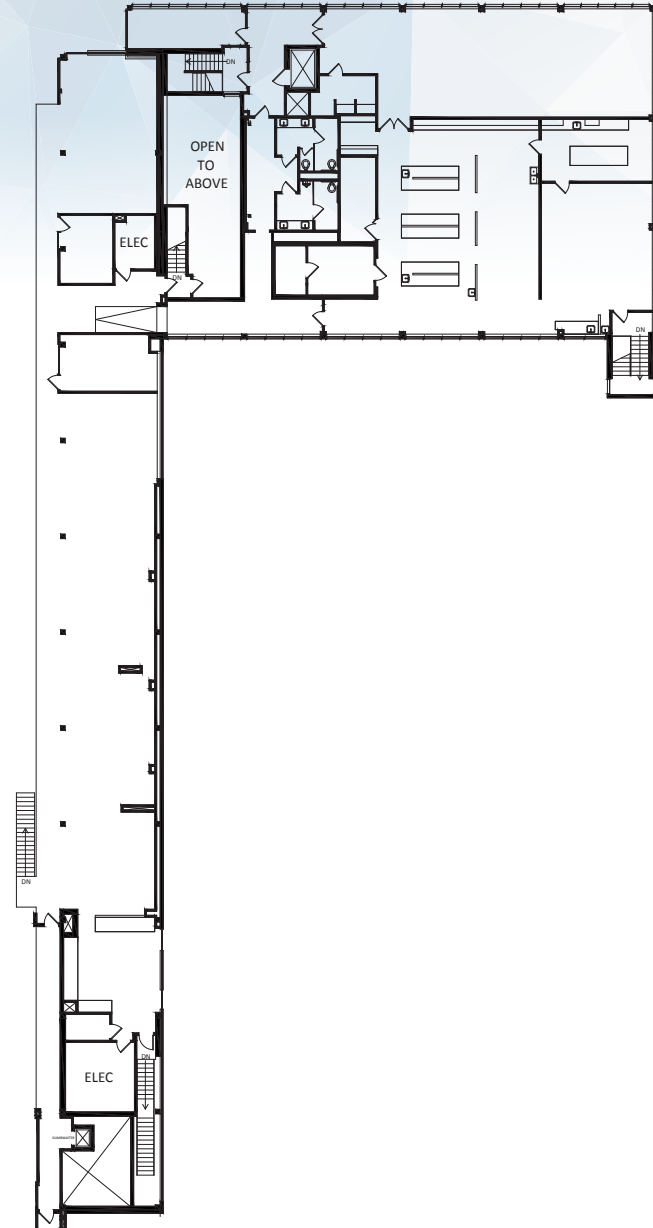
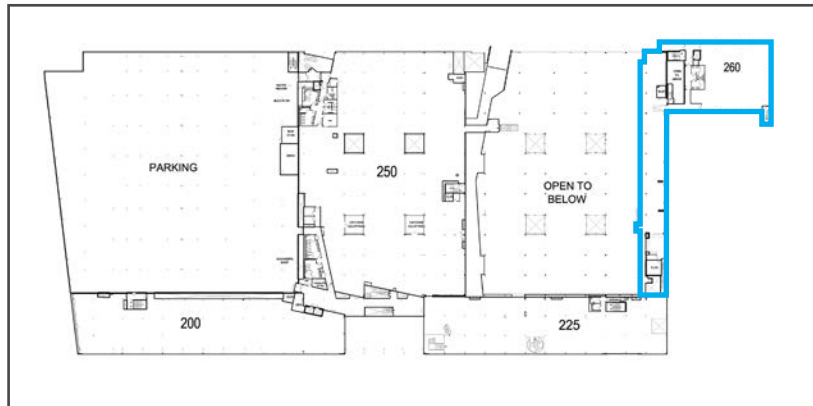
- ◆ Ample natural light
- ◆ Creative feel
- ◆ In suite restrooms
- ◆ Kitchenette
- ◆ Interconnecting stairwells



FLOORPLAN

SUITE 260 | 13,412 RSF

- ◆ Ample natural light
- ◆ In suite restrooms
- ◆ Kitchenette
- ◆ Interconnecting stairwells



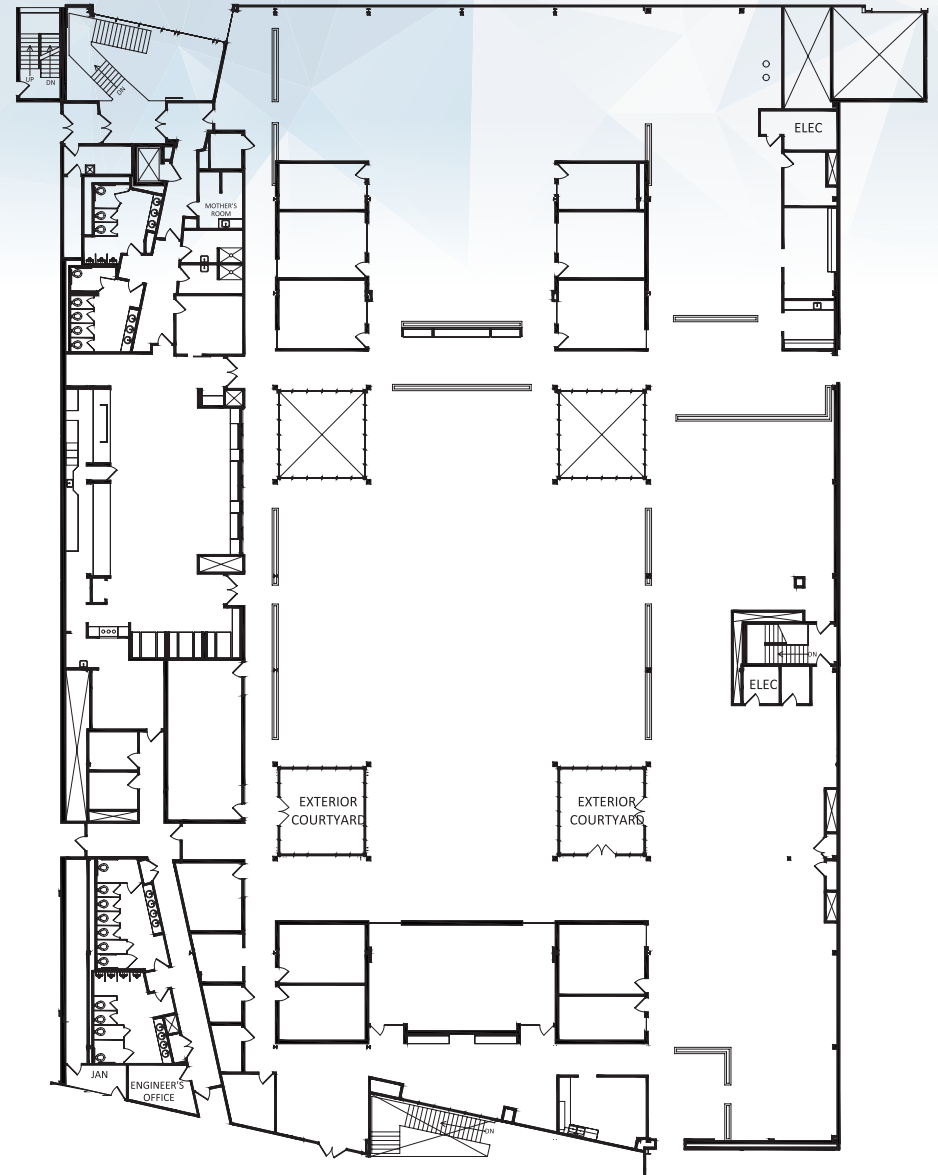
1400 65th St | Emeryville | CA



FLOORPLAN

SUITE 250 | 41,439 RSF

- ◆ Board room
- ◆ 11 private offices
- ◆ Large kitchen/cafeteria
- ◆ Excellent natural light

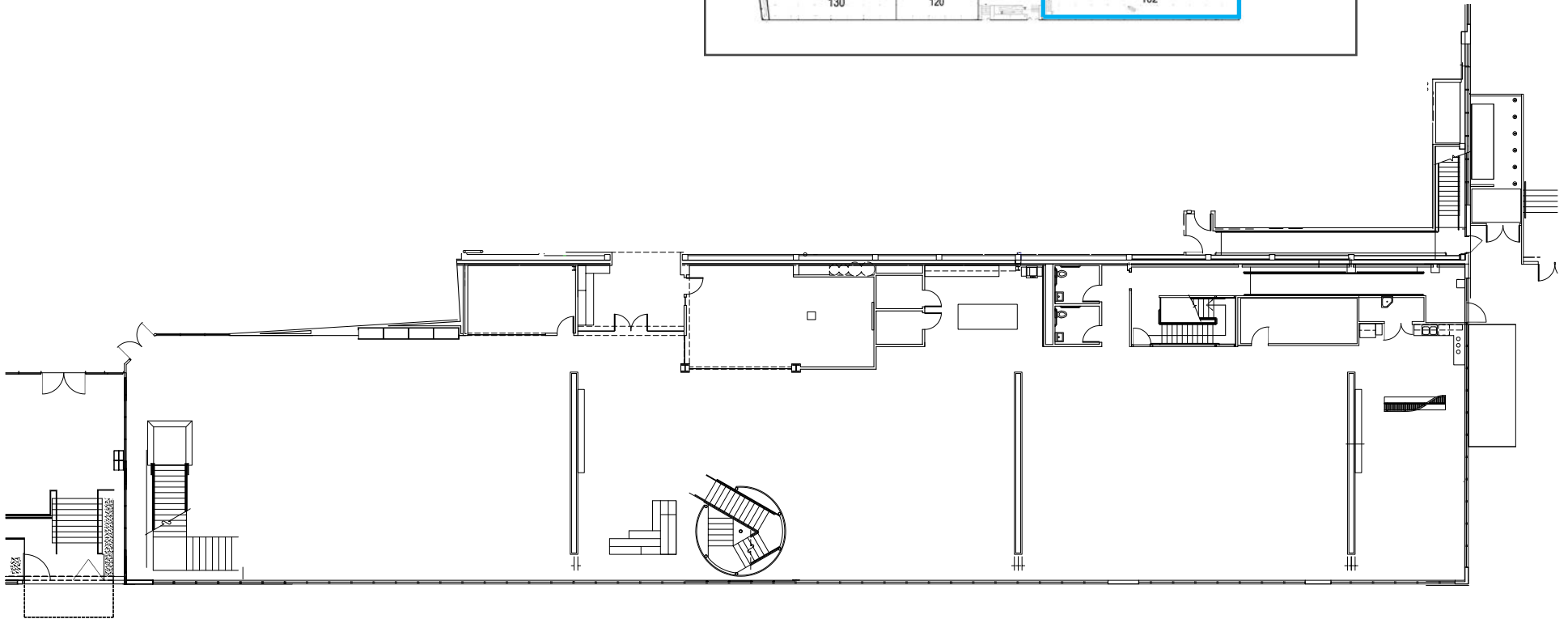
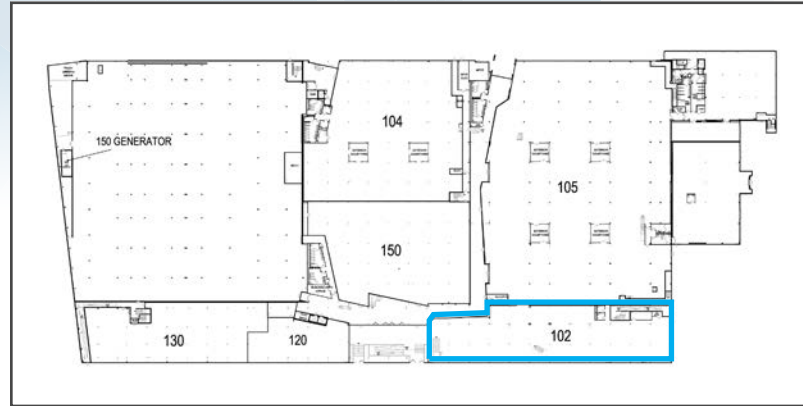


FLOORPLAN

SUITE 102 | 13,925 RSF



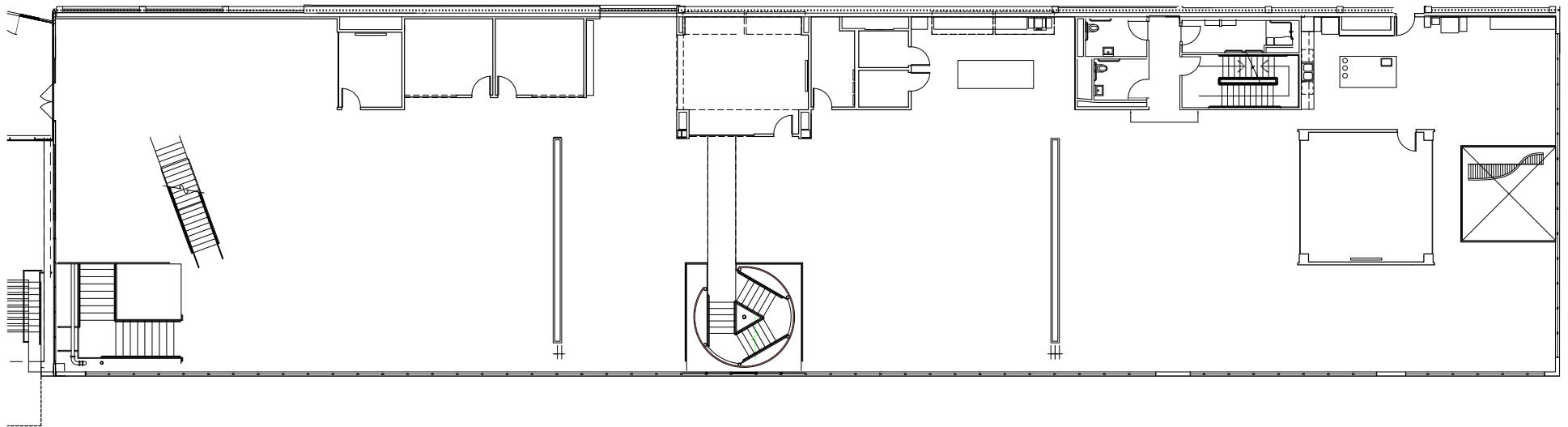
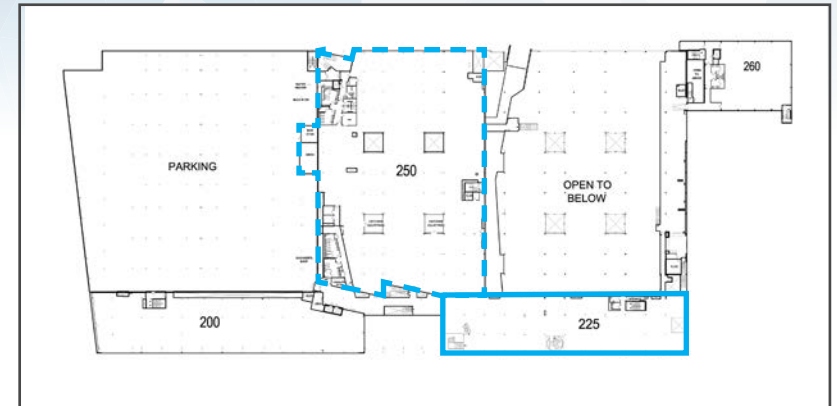
- ◆ Ample natural light
- ◆ Creative feel
- ◆ In suite restrooms
- ◆ Kitchenette
- ◆ Interconnecting stairwells



FLOORPLAN

SUITE 225 | 15,800 RSF

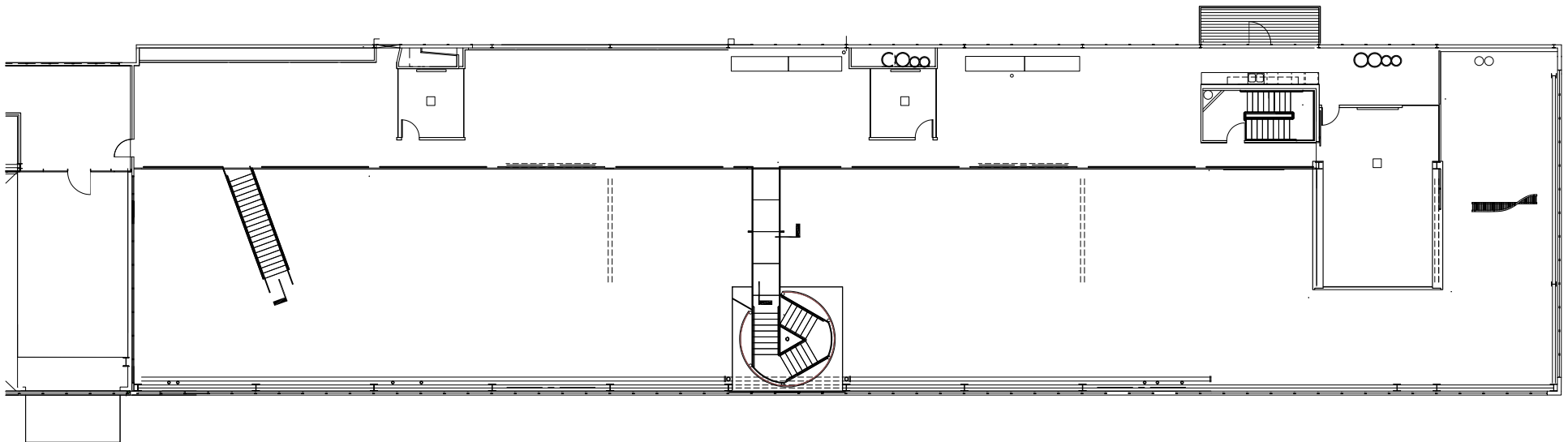
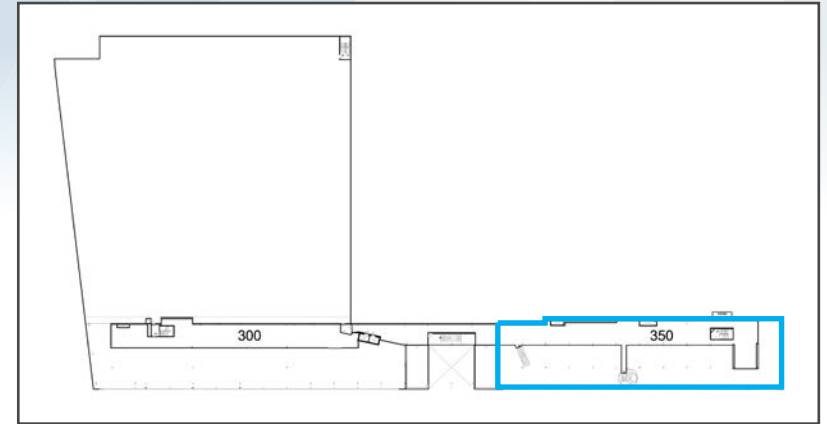
- ◆ Interconnecting stairwell to 1st and 3rd floors
- ◆ 2 large conference rooms
- ◆ Ample natural light
- ◆ Creative feel
- ◆ In suite restrooms
- ◆ Kitchenette



FLOORPLAN

SUITE 350 | 6,029 RSF

- ◆ Interconnecting stairwell to 2nd floor
- ◆ Large conference rooms
- ◆ Ample natural light
- ◆ Creative feel
- ◆ Private deck
- ◆ Open to 2nd floor

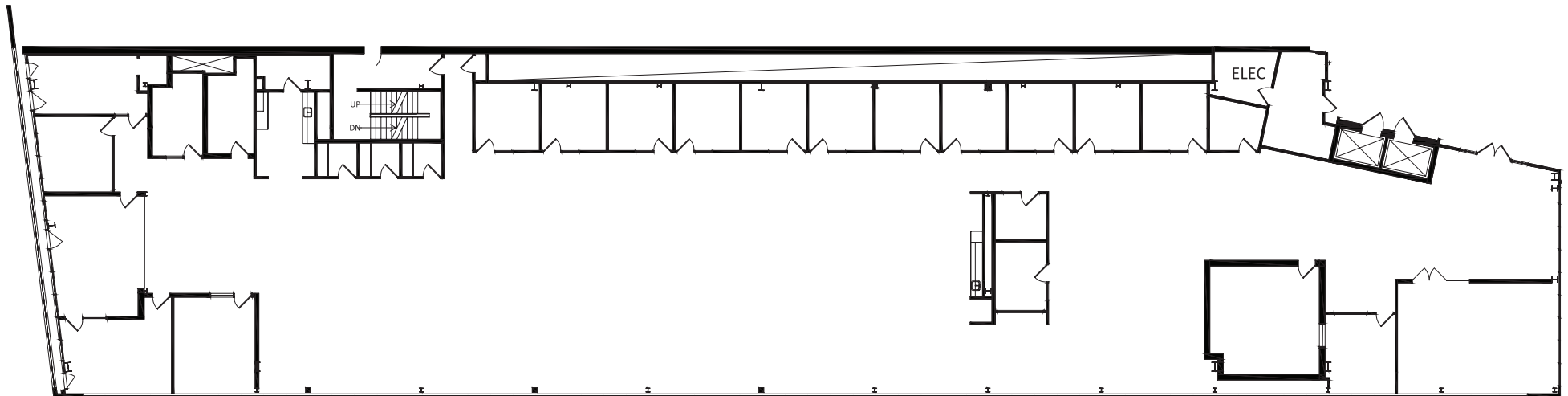
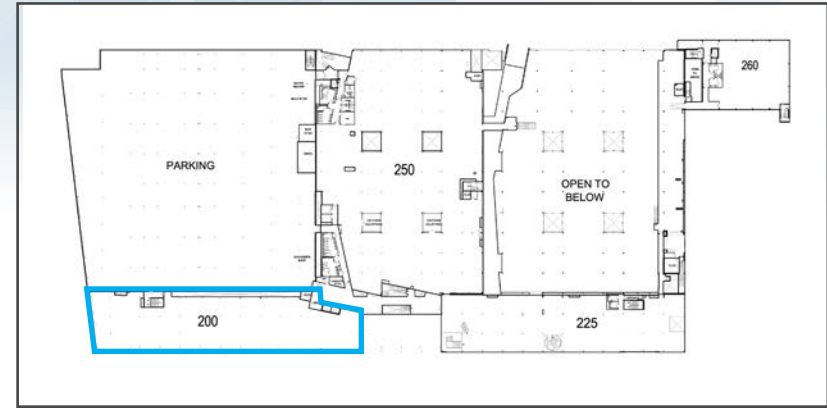


FLOORPLAN

SUITE 200 | 16,441 RSF



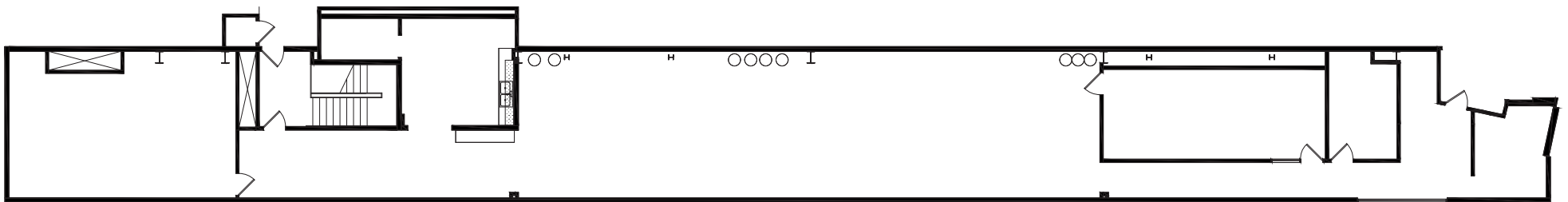
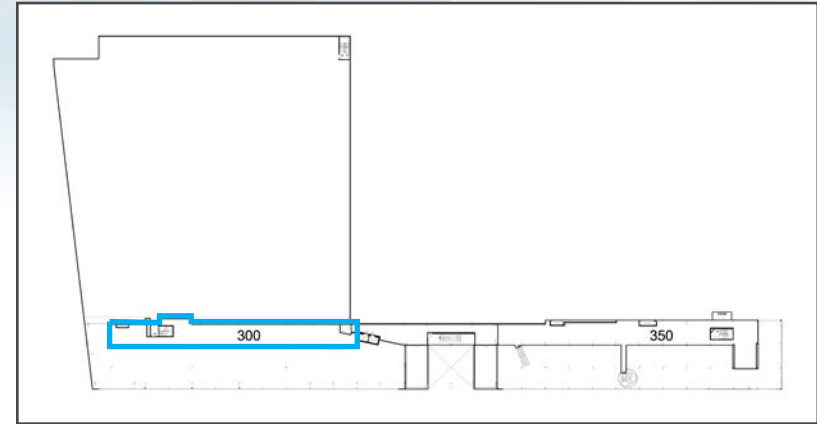
- ◆ 19 Private offices
- ◆ 3 Conference rooms
- ◆ 3 Phone booths
- ◆ Kitchenette
- ◆ Can add an additional 5,184 sf via open mezzanine



FLOORPLAN

SUITE 300 | 5,184 RSF

- ◆ 2 large conference rooms
- ◆ 1 private office
- ◆ Kitchenette

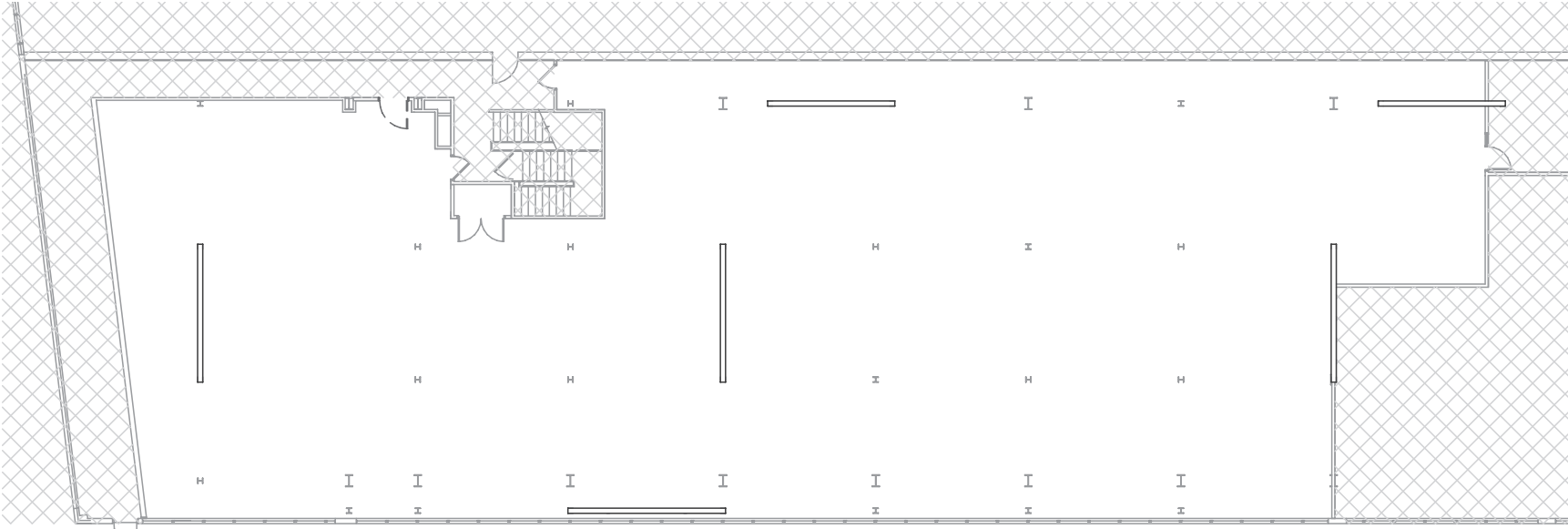
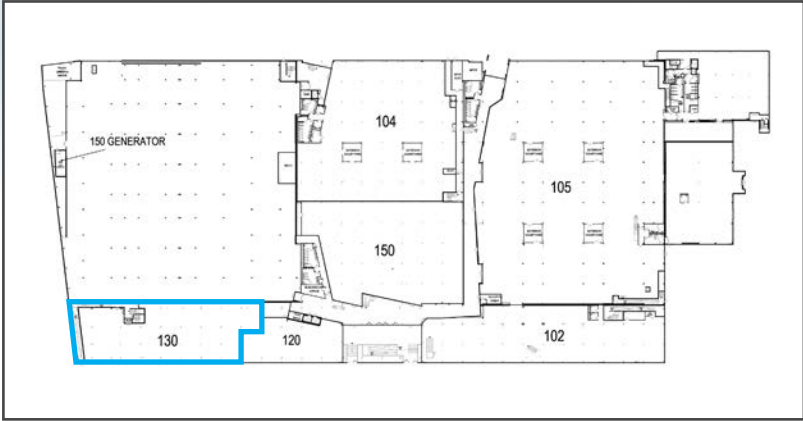


FLOORPLAN

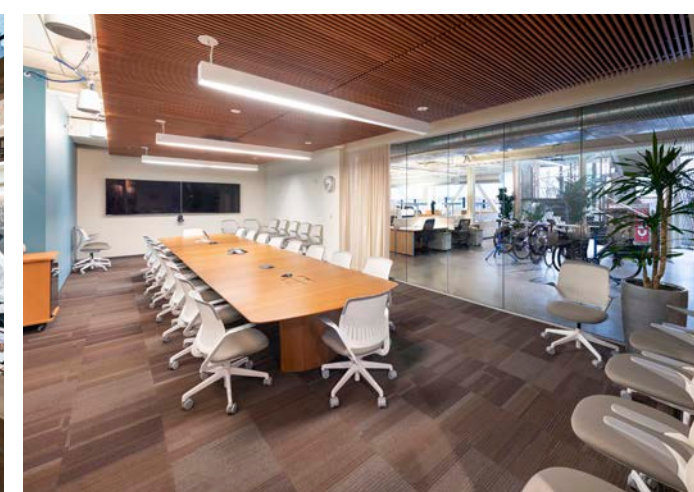
SUITE 130 | 10,894 RSF



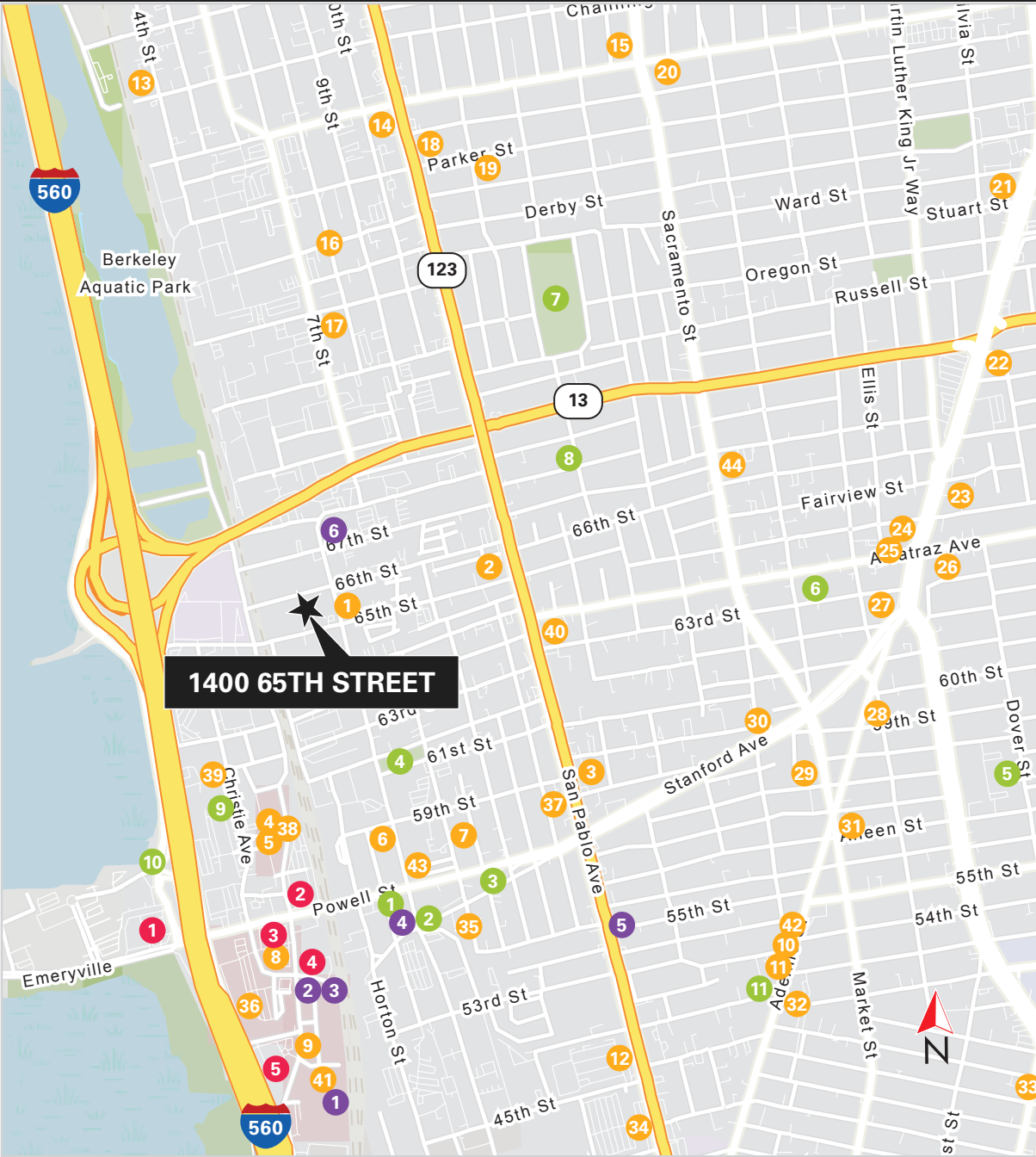
- ◆ Shell condition
- ◆ Ample natural light
- ◆ Open ceilings



GALLERY



AMENITIES MAP



RESTAURANTS

1. Los Moles
2. Mujiri
3. Namaste Pizza
4. Pizzeria Mercato
5. Super Duper Burgers
6. Summer Summer Thai Eatery
7. Townhouse
8. Black Bear Diner Emeryville
9. Fogo de Chão Brazilian Steakhouse
10. Taqueando Street Kitchen
11. Amici's East Coast Pizzeria
12. KFC
13. Viks Chaat
14. Caffè Chiave
15. Homemade Cafe
16. Third Culture Bakery Berkeley
17. 900 Grayson
18. Anthony's Cookies- Berkeley
19. d.o.g. Food Truck
20. Helacio's Deli & Cafe
21. Crixia Cakes
22. Flacos
23. EL TINY CAFE
24. Vault Cafe
25. Easy Creole
26. Chen's Garden
27. Sweet Adeline Bakeshop
28. Lois The Pie Queen
29. Tameria Azteca
30. Sideshow Kitchen
31. Al-Maida Hot Food and Market
32. Pizza Amigos
33. Mellana Cafe
34. Arizmendi Bakery & Pizzeria
35. Doyle Street Cafe
36. Nothing Bundt Cakes
37. Café Colucci
38. Public Market Emeryville
39. Black Diamond Café
40. Paradise Park Cafe
41. Shake Shack Bay Street
42. Screamin Hot Chicken N Waffles
43. The Bureau 510
44. Creekwood Restaurant

HOTELS

1. Hilton Garden Inn San Francisco
2. Hyatt House Emeryville
3. Four Points by Sheraton
4. Hyatt Place Emeryville
5. Sonesta Emeryville

PARKS

1. Emeryville Greenway Park
2. Dog park
3. Stanford Avenue Park
4. Doyle Hollis Park
5. Dover Park
6. Sixty-Third Street Mini-Park
7. San Pablo Park
8. Haskell-Mabel Mini-Park
9. Christie Knoll Park
10. Shorebird Park Emeryville
11. Temescal Creek Park Playground

ENTERTAINMENT







1. Sandbox VR
2. Habitat Children's Museum
3. Trophy Club
4. Cafe Rack
5. Wolfhound Bar
6. Prizefighter

TRANSPORTATION MAP



1400 65TH ST



- EMERY GO-ROUND 
- HOLLIS (H) 
- SHELLMOUND/POWELL (SP) 
- ZIP CAR LOCATIONS 
- AC TRANSIT CONNECTIONS 
- SUBWAY LINES 

★ 1400 65TH ST	
LOCATION	DISTANCE / TIME
I-580	3.4 MILES - 11 MIN
I-80	4.4 MILES - 10 MIN
EMERYVILLE AMTRAK STATION	0.6 MILES - 3 MIN
ASHBY BART STATION	1.5 MILES - 7 MIN
MacARTHUR BART STATION	2.9 MILES - 13 MIN

EmeryTech

1400 65th St Emeryville, CA

CONOR RANAHAN

Managing Director
conor.ranahan@nrmk.com
t 925-899-6699
RE Lic #01850797

BILL BENTON

Vice Chairman
bill.benton@nrmk.com
t 415-806-2455
RE Lic #01247617

NEWMARK



The information contained herein has been obtained from sources deemed reliable but has not been verified and no guarantee, warranty or representation, either express or implied, is made with respect to such information. Terms of sale or lease and availability are subject to change or withdrawal without notice. MP-845