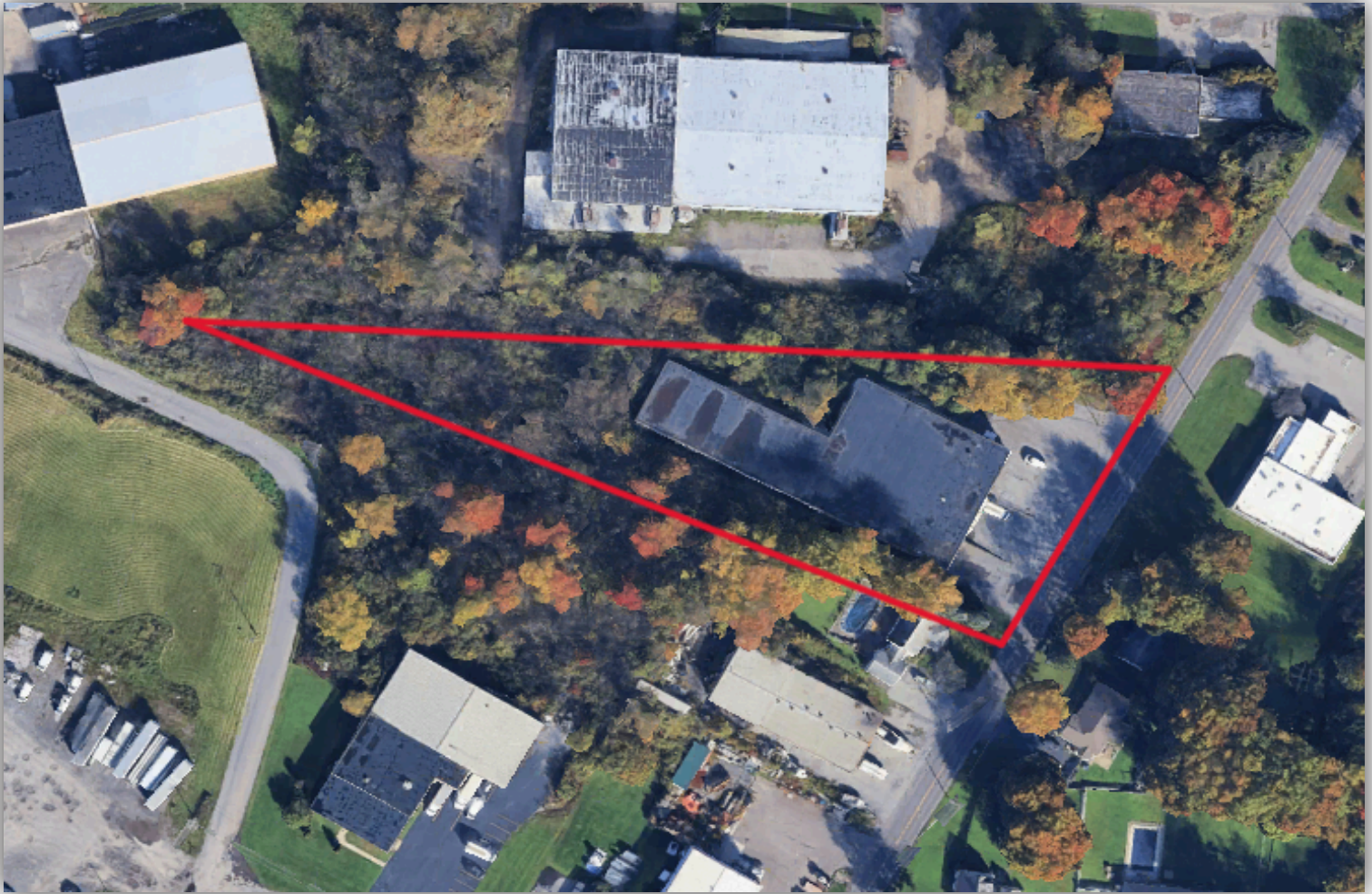


INDUSTRIAL SPACE FOR LEASE

6741 Old Collamer Rd, East Syracuse, NY 13057



PROPERTY DETAILS

Building SF:	22,000
Lot Size:	1.57
Grade Levels:	ability to add
Dock Doors:	3
Ceiling Height:	18'0

PROPERTY SUMMARY

Approximately 22,000 SF at 6741 Old Collamer Road in East Syracuse. This flexible industrial / distribution facility offers 18' clear height, three loading docks, and the ability to add a drive-in. Positioned on a 1-acre parcel immediately off Carrier Circle — with instant access to I-90, I-481 and I-690 — the site delivers elite logistical connectivity and fast reach to the entire Syracuse metro and the emerging Micron corridor. Ideal for light industrial, storage, distribution, wholesale, contractor or service uses.



Visit
Our
Website

Matt DePerro

315-720-9731

Matt@ironhornenterprises.com



INDUSTRIAL SPACE FOR LEASE

6741 Old Collamer Rd, East Syracuse, NY 13057

