

KEEGO HARBOR

Proposed Redevelopment



3335 Orchard Lake Rd.
Keego Harbor, MI 48320



Retail Opportunity
2,735 ± SF

FOR LEASE

PROPERTY HIGHLIGHTS



Description

This proposed redevelopment is ideal for coffee shops, retail stores, or service-oriented businesses, offering the perfect blend of accessibility and appeal. Situated in the heart of Keego Harbor, this location boasts high visibility, ensuring maximum exposure to passing traffic. Landlord would consider different facade options to meet tenants needs.

Address

3335 Orchard Lake Rd.
Keego Harbor, MI 48320

Features

- Freestanding Building
- Excellent Road Visibility
- Monument Sign Available
- Multiple curb cuts
- Built in 1985

Starting Rent

\$19/SF plus NNN

Traffic Counts

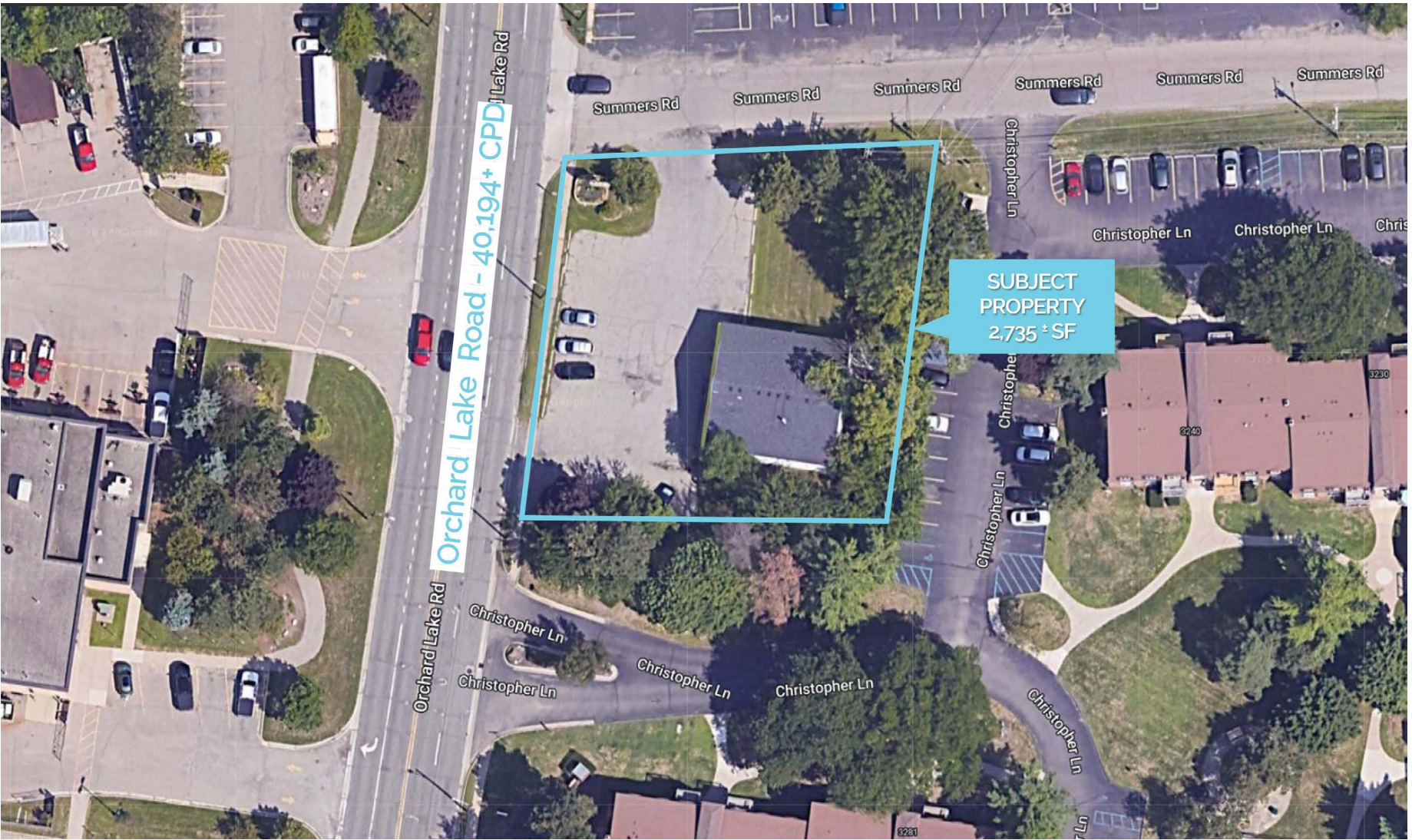
Orchard Lake Rd. - 40,194+ cpd
Commerce Rd. - 14,949+ cpd

Demographics

	1 MILE	3 MILES	5 MILES
POPULATION:	5,041	50,295	163,854
HOUSEHOLDS:	2,387	21,309	67,479
AVG. HOUSEHOLD INCOME:	\$150,771	\$171,475	\$147,851
DAYTIME POPULATION:	3,760	29,825	113,893

The information contained herein has been obtained through sources deemed reliable by On Q Commercial Real Estate but cannot be guaranteed for its accuracy. We recommend to the buyer or lessee that any information, which is of special interest, should be obtained through independent verification. ALL MEASUREMENTS ARE APPROXIMATE.

MICRO AERIAL



The information contained herein has been obtained through sources deemed reliable by On Q Commercial Real Estate but cannot be guaranteed for its accuracy. We recommend to the buyer or lessee that any information, which is of special interest, should be obtained through independent verification. ALL MEASUREMENTS ARE APPROXIMATE.

PHOTOS

PROPOSED REDEVELOPMENT



The information contained herein has been obtained through sources deemed reliable by On Q Commercial Real Estate but cannot be guaranteed for its accuracy. We recommend to the buyer or lessee that any information, which is of special interest, should be obtained through independent verification. ALL MEASUREMENTS ARE APPROXIMATE.

EXISTING PROPERTY



The information contained herein has been obtained through sources deemed reliable by On Q Commercial Real Estate but cannot be guaranteed for its accuracy. We recommend to the buyer or lessee that any information, which is of special interest, should be obtained through independent verification. ALL MEASUREMENTS ARE APPROXIMATE.

Leasing Brokerage



Owned & Managed by:



JOE QONJA

Principal

C: (248) 977-7799

O: (248) 712-3300

E: joe@onqcre.com

LEO ALLUS

Associate

C: (248) 321-3325

O: (248) 712-3300

E: leo@onqcre.com

100 W. Long Lake Rd. Suite 122 Bloomfield Hills, MI 48304

www.onqcre.com

The information contained herein has been obtained through sources deemed reliable by On Q Commercial Real Estate but cannot be guaranteed for its accuracy. We recommend to the buyer or lessee that any information, which is of special interest, should be obtained through independent verification. ALL MEASUREMENTS ARE APPROXIMATE.