

Industrial Building - 2626 24th Street

2626 24th St, Port Huron, MI 48060



Listing ID: 30724553
 Status: Active
 Property Type: Industrial For Sale
 Industrial Type: Free-Standing, Industrial-Business Park
 Size: 18,528 SF
 Sale Price: \$1,160,000
 Unit Price: \$62.61 PSF
 Sale Terms: Cash to Seller
 Loading: 2 Docks, 2 Doors
 Ceiling: 24 ft. / 20 ft. Clear
 Drive-In Bays: 2 Bays



Overview/Comments

Located in the City of Port Huron, County of St. Clair, this industrial building is comprised of 18,120 square feet more or less, built in 1996. An additional storage building was built in 2016 comprised of 408 square feet more or less, fully ventilated with removable roof. Situated on 6.83 acres more or less, allowing addition room to expand or to construct additional industrial buildings for ownership or future tenants.

More Information Online

<https://kramerrealty.catalist.com//listing/30724553>

QR Code

Scan this image with your mobile device:



General Information

Tax ID/APN:	74-06-182-0014-000	Property Use Type:	Vacant/Owner-User
Industrial Type:	Free-Standing, Industrial-Business Park, Manufacturing, Light Industrial, Research & Development, Warehouse/Distribution	Gross Building Area:	18,528 SF
		Building/Unit Size (RSF):	18,528 SF
Zoning:	M-1	Land Area:	6.83 Acres
		Sale Terms:	Cash to Seller

Building Related

Tenancy:	Single Tenant	Loading Docks:	2
Total Number of Buildings:	2	Drive-In Bays:	2
Number of Stories:	1	Passenger Elevators:	0
Year Built:	1996	Freight Elevators:	0
Roof Type:	Flat	Overhead Cranes:	1
Construction/Siding:	Brick	Volts:	480
Parking Type:	Surface	X-Phase:	3
Ceiling Height:	24	Heat Type:	Suspended Radiant Heaters
Clear Height:	20	Heat Source:	Radiant
Loading Doors:	2	Air Conditioning:	Engineered System

Land Related

Zoning Description:	M-1	Easements:	Ingress/Egress
Water Service:	Municipal	Easements Description:	Share driveway with adjacent parcel
Sewer Type:	Municipal		

Location

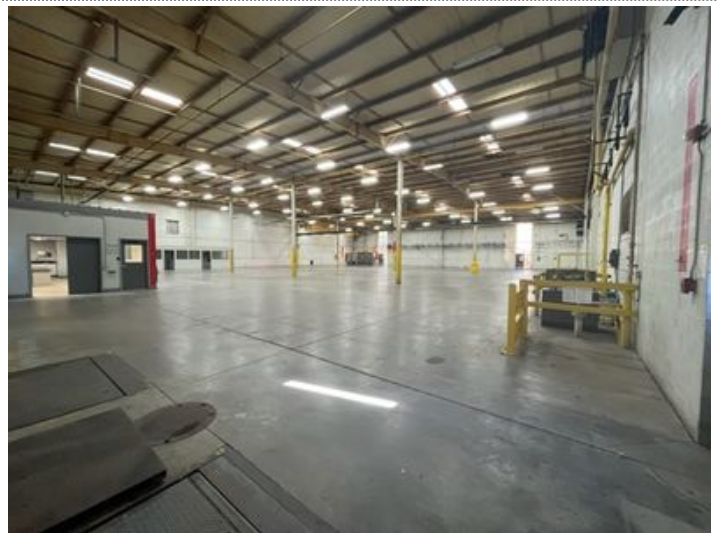
Address: 2626 24th St, Port Huron, MI 48060
 County: Saint Clair
 MSA: Detroit-Warren-Dearborn



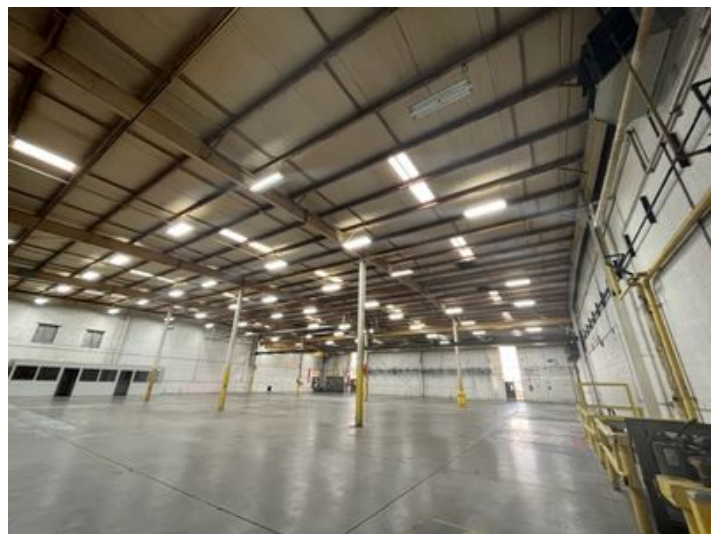
Property Images



IMG_8424



IMG_1196



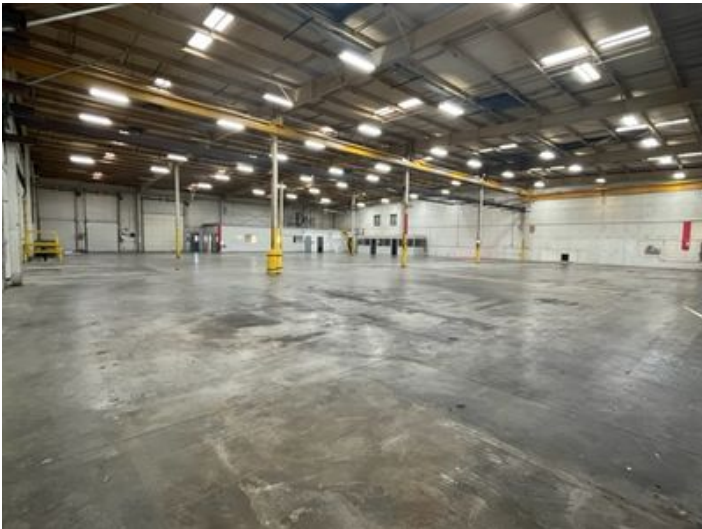
IMG_1197



IMG_1198



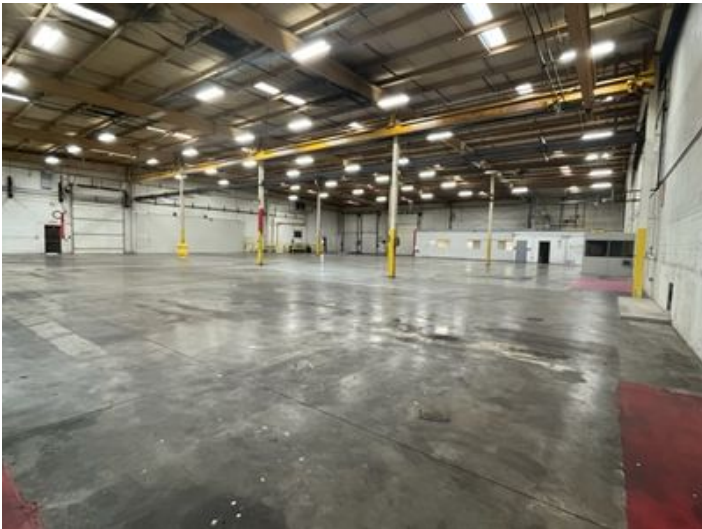
IMG_9040



IMG_1199



IMG_9041



IMG_1200



IMG_8415



IMG_8407



IMG_8410



Parcel Map

Property Contacts



Korissa Kramer, CCIM

Kramer Commercial Realty
810-531-4090 [M]
810-987-4622 [O]
kkramer@kramercommercial.com



Gerry J. Kramer, S.I.O.R., F.A.B.

Kramer Commercial Realty
810-434-8560 [M]
810-987-4622 [O]
gkramer@kramercommercial.com