

# KINGWOOD MEDICAL CENTER

1330 Kingwood Drive | Kingwood, TX 77339



## Building Features

- 12,000 RSF single-story medical office building
- Covered patient dropoff
- Building signage available
- Parking ratio 5.4/1,000 SF
- Conveniently located close to I-69
- Minutes from HCA Houston Healthcare Kingwood & IAH Airport







# KINGWOOD MEDICAL CENTER

1330 Kingwood Drive | Kingwood, TX 77339



<b>Owner</b>	PrimeHealth Properties Trust LLC
<b>Total NRA</b>	12,000 SF
<b>Floors</b>	1
<b>Year Built/Year Reno</b>	1996/2022
<b>Smallest Contiguous</b>	1,864 SF
<b>Largest Contiguous</b>	7,000 SF
<b>Rental Rate</b>	\$22.00 - \$24.00/SF NNN
<b>Operating Expenses</b>	\$14.64/SF
<b>Parking Ratio</b>	5.4/1,000 SF
<b>Building Hours</b>	Mon-Fri 8AM-5PM; Sat & Sun CLOSED

Suite	Available SF	Links and Notes
100	1,864	
300	7,000	

## Leasing Information:

**Evelyn Ward, CCIM, SIOR**

713.270.3352

Evelyn.Ward@transwestern.com

**Sarah Carter**

713.231.1629

Sarah.Carter@transwestern.com

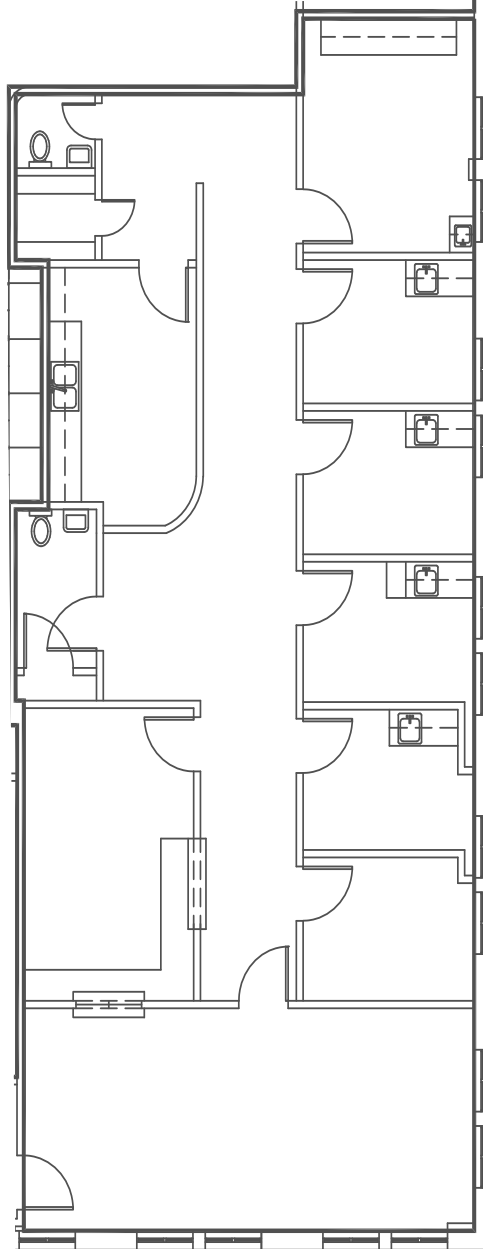


The information provided herein was obtained from sources believed reliable; however, Transwestern makes no guarantees, warranties or representations as to the completeness of accuracy thereof. The presentation of this property is submitted subject to errors, omissions, change of price or conditions, prior to sale or lease, or withdrawal without notice. Copyright © 2025 Transwestern.

# KINGWOOD MEDICAL CENTER

1330 Kingwood Drive | Kingwood, TX 77339

**Suite 100**  
**1,864 SF**



## Leasing Information:

**Evelyn Ward, CCIM, SIOR**  
713.270.3352  
Evelyn.Ward@transwestern.com

**Sarah Carter**  
713.231.1629  
Sarah.Carter@transwestern.com

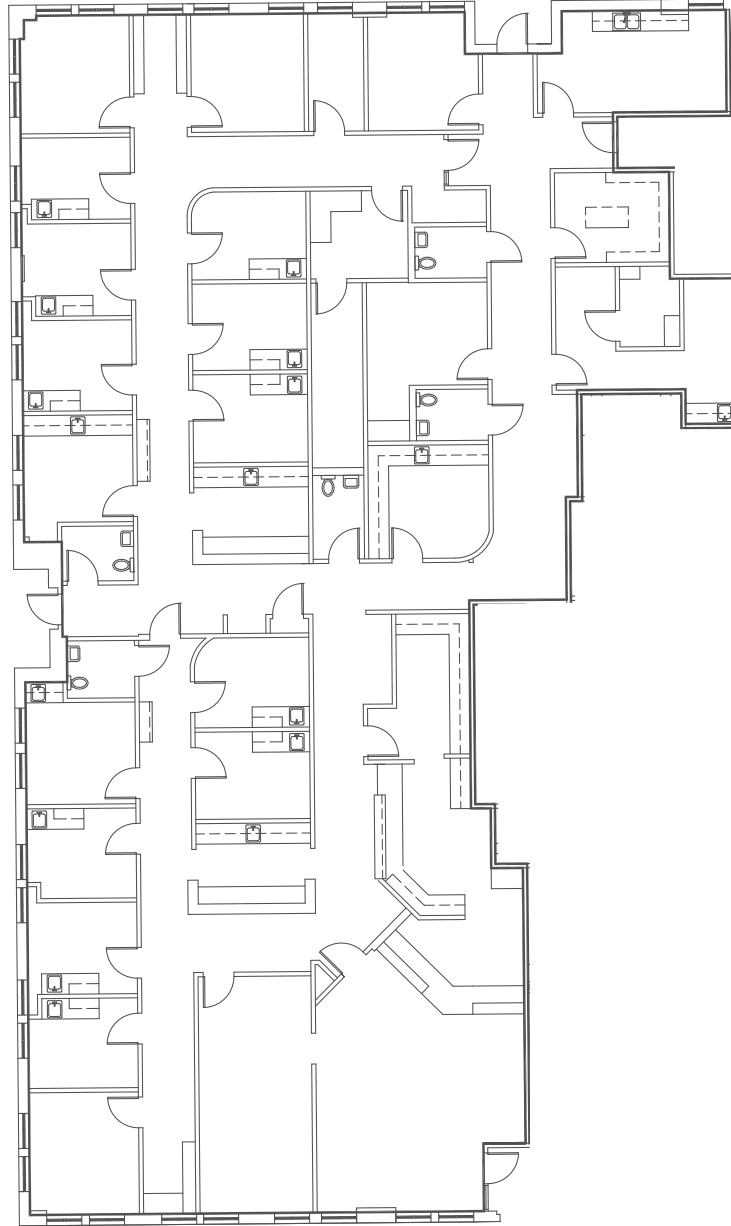


The information provided herein was obtained from sources believed reliable; however, Transwestern makes no guarantees, warranties or representations as to the completeness of accuracy thereof. The presentation of this property is submitted subject to errors, omissions, change of price or conditions, prior to sale or lease, or withdrawal without notice. Copyright © 2025 Transwestern.

# KINGWOOD MEDICAL CENTER

1330 Kingwood Drive | Kingwood, TX 77339

**Suite 300**  
**7,000 SF**



## Leasing Information:

**Evelyn Ward, CCIM, SIOR**

713.270.3352

[Evelyn.Ward@transwestern.com](mailto:Evelyn.Ward@transwestern.com)

**Sarah Carter**

713.231.1629

[Sarah.Carter@transwestern.com](mailto:Sarah.Carter@transwestern.com)

