

FOR LEASE

PREMIER LOCATION, DOWNTOWN WATERFRONT DISTRICT

907 Harney Street | Vancouver, WA 98660

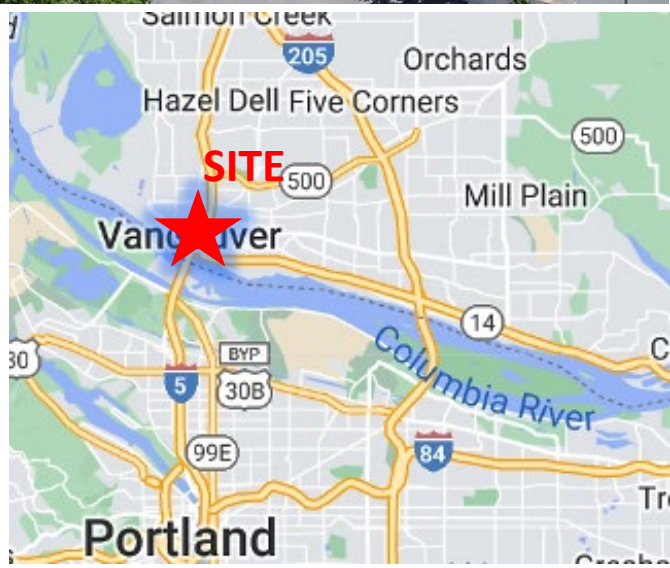


900 Washington St, Suite 850, Vancouver, WA
360.750.5595 | www.fg-cre.com



PROPERTY HIGHLIGHTS

- 13,885 SF office space
- Office space with easy access to Esther Short Park and Waterfront District
- 30 on-site parking spaces
- Rate: \$18.00/SF NNN (NNN \$6.00/SF)



FOR MORE INFORMATION:

KC Fuller | 360.597.0569 | kfuller@fg-cre.com
Eric Fuller, CCIM | 360.597.0564 | efuller@fg-cre.com

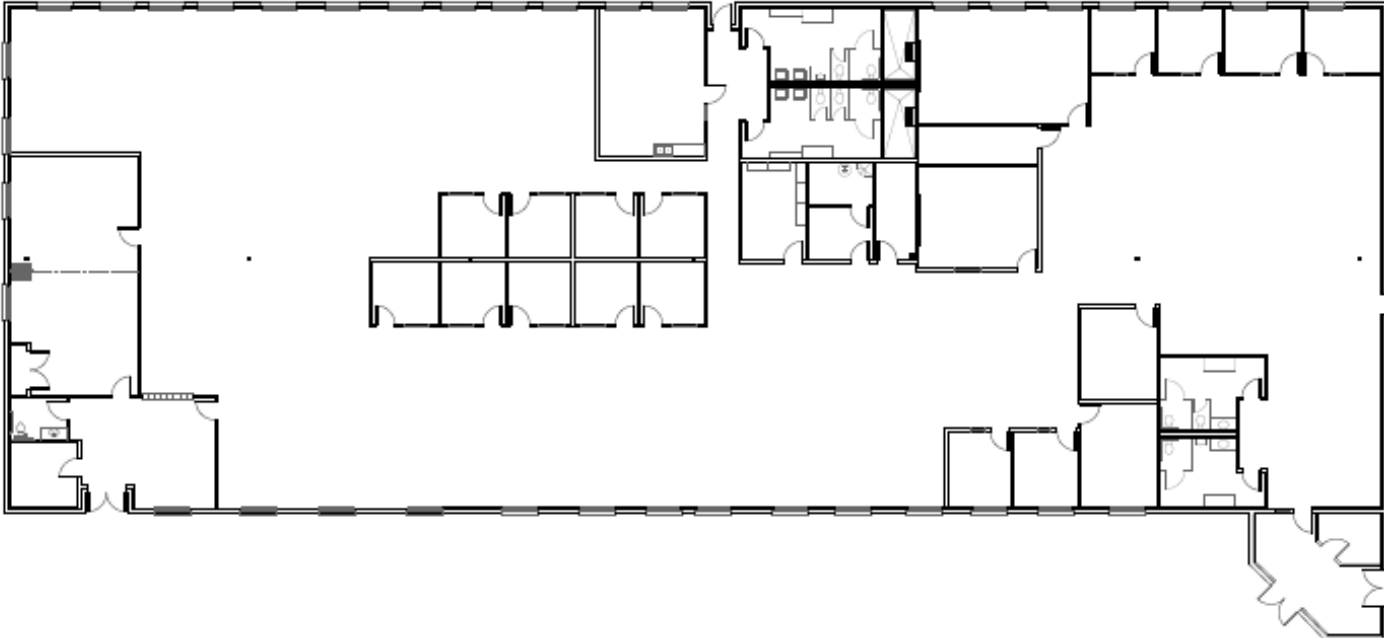
FOR LEASE

PREMIER LOCATION, DOWNTOWN WATERFRONT DISTRICT

907 Harney Street | Vancouver, WA 98660



900 Washington St, Suite 850, Vancouver, WA
360.750.5595 | www.fg-cre.com



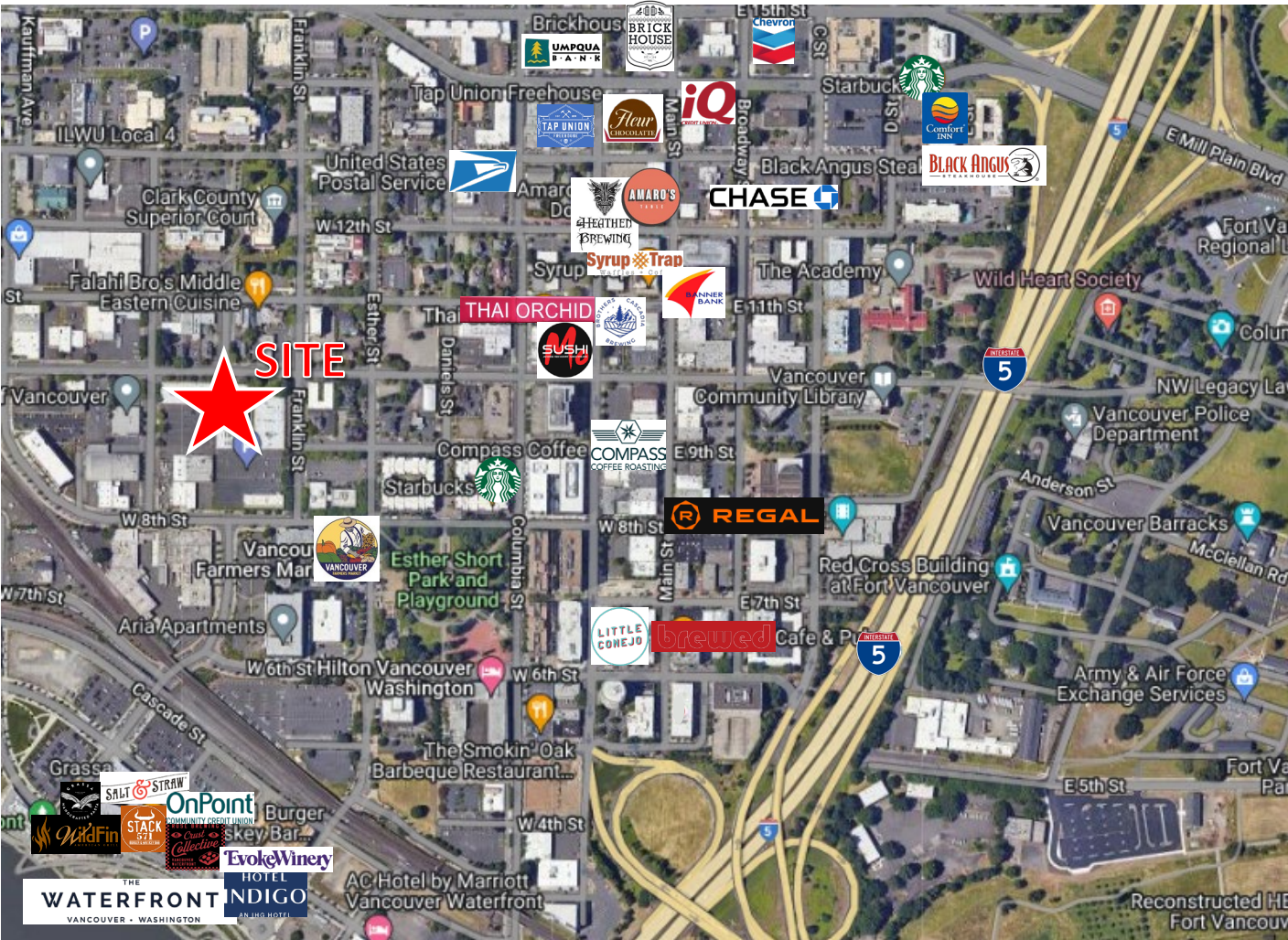
FOR LEASE

PREMIER LOCATION, DOWNTOWN WATERFRONT DISTRICT

907 Harney Street | Vancouver, WA 98660



900 Washington St, Suite 850, Vancouver, WA
360.750.5595 | www.fg-cre.com



2024 DEMOGRAPHICS

	1 Mile	3 Mile	5 Mile
Est. Population	11,038	62,821	225,837
2029 Projected Population	12,326	67,325	234,788
Est. Average Household Income	\$81,917	\$84,394	\$94,837
Est. Total Businesses	2,086	4,946	13,208
Est. Total Employees	15,510	42,158	113,721

Average Daily Traffic

W 14th St @ Esther St E – 5,956

W Evergreen Blvd @ Washington St W – 4,544

W 15th St @ West Mill Plain Blvd E – 13,224



This statement with the information it contains is given with the understanding that all the negotiations relating to the purchase, rental or leasing of the property described above shall be conducted through this office. The above information, while not guaranteed, has been secured from sources we believe to be reliable.