



# SmartEquity

Commercial Real Estate and Property Management

**FOR LEASE**  
Bank of America Bldg

4625 Lindell Blvd, St. Louis, MO 63108

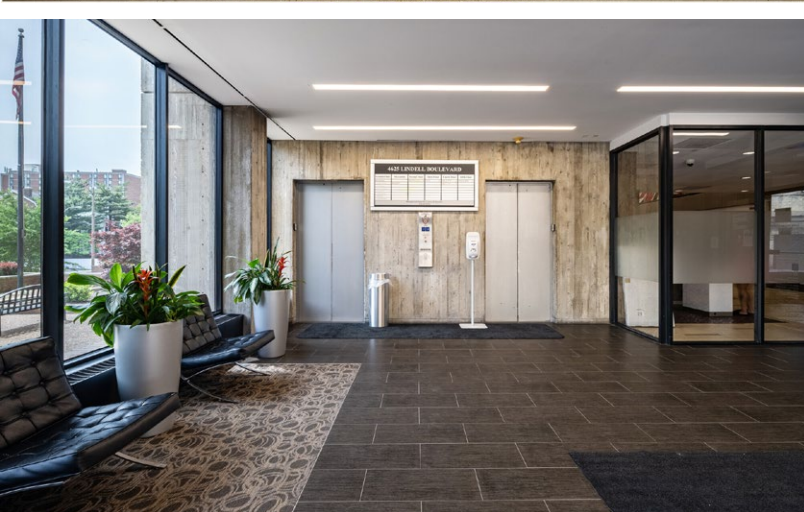
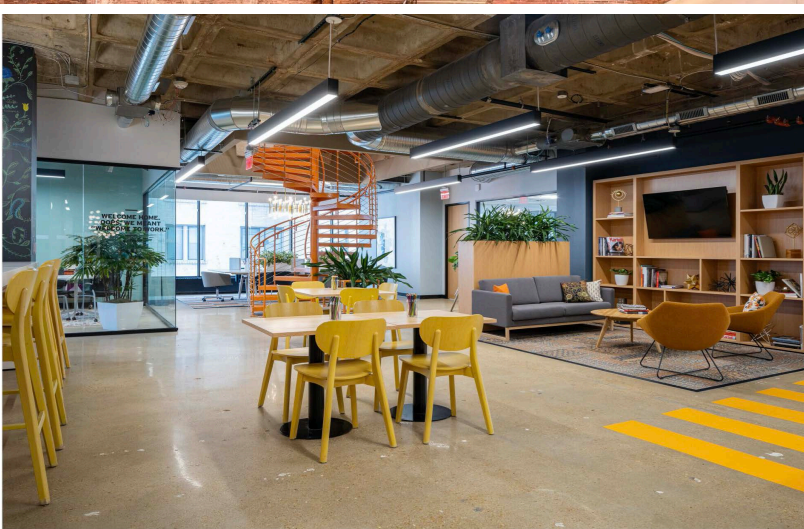
**BRANDON K. SMART, CCIM | 314.254.0088 | Brandon@bsmartequity.com**

**MALIK R. SIMMONS | 314.254.0088 (O) 618.434.0243 (M) | Malik@bsmartequity.com**

No expressed or implied warranty or representation is made as to the accuracy of the information contained herein. This property is submitted subject to errors, omissions, change of price, withdrawal without notice, prior lease or sale and any other listing conditions imposed by the principals.



# PROPERTY DETAILS



**CLASS B OFFICE**  
Type

**URBAN**  
Location

**71,652 SF**  
Property Size

**1.03**  
AC Lot

**5**  
Stories

**14,057 SF**  
Typical Floor

**1,600 - 20,000 SF**  
Available SF

**11,000 SF**  
Max Contiguous

**14,057 SF**  
Typical Floor

**200: 2.50/1,000 SF**  
Parking Ratio

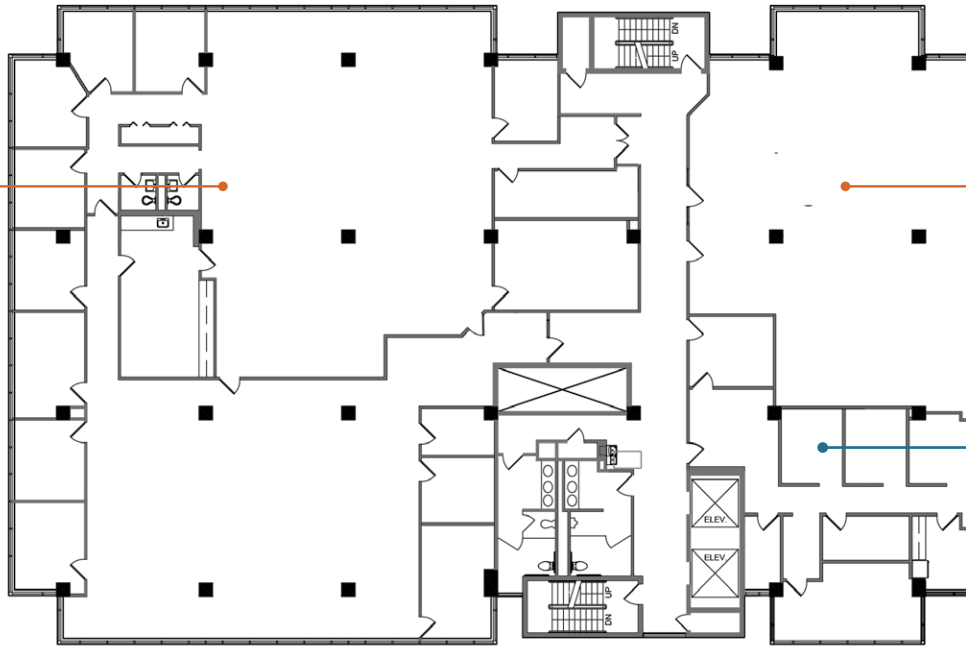
**COVERED/200**  
Parking Type/Spaces

**\$21.00 - 25.00/psf Modified Gross**  
Office Rent



# FOURTH FLOOR PLAN

12,492 TOTAL RSF



**AVAILABLE**

Suite 420  
8,393 RSF

**AVAILABLE**

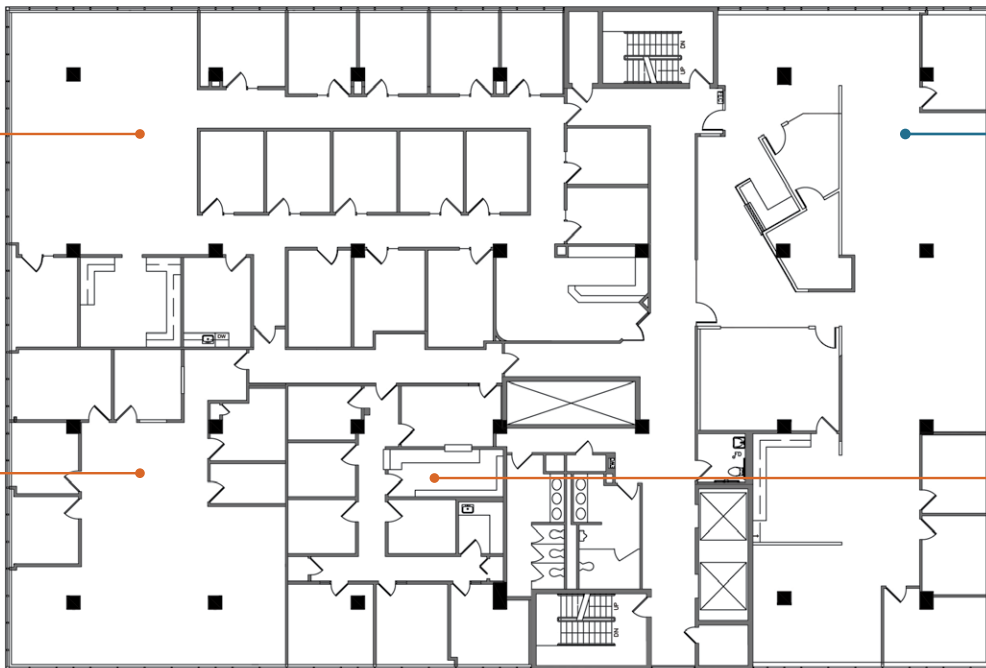
Suite 401  
2,530 RSF

**FRANCIS J. KUBIK, III,  
DDS PC**

Suite 400  
1,569 RSF

# FIFTH FLOOR PLAN

14,220 TOTAL RSF



**AVAILABLE**

Suite 501  
5,383 RSF

**BARD, RAO &  
ATHANAS CONSULTING  
ENGINEERS**

SUITE 500  
4,826 RSF

**AVAILABLE**

Suite 510  
2,364 RSF

**AVAILABLE**

Suite 507  
1,647 RSF



# MAP



DRESSEL'S



WARBY PARKER  
Main Squeeze  
CLEMENTINE'S  
DURANGO  
BRENNAN'S



SUBJECT PROPERTY  
BANK OF AMERICA  
BRA+  
SPACES.



EUCLID AVE



LINDELL BLVD







# SmartEquity

Commercial Real Estate and Property Management

[www.bsmarthequity.com](http://www.bsmarthequity.com)