

NorthPointe West

6195, 6211, 6219 EL CAMINO REAL
CARLSBAD, CA

6195

Available for Lease or Sale

THREE-BUILDING LIFE SCIENCE AND R&D
CAMPUSBUILDINGS CAN BE LEASED OR PURCHASED
INDIVIDUALLY OR AS A CAMPUS

±21,258 SF - ±78,952 SF

 CUSHMAN &
WAKEFIELD

PHASE3
REAL ESTATE PARTNERS

Discover NorthPointe West

Position your company for success at NorthPointe West, where cutting-edge, freestanding life science and R&D facilities meet exceptional flexibility and high-end design. Ideal for a wide range of scientific and research applications, these state-of-the-art buildings are supported by robust manufacturing infrastructure, walkable retail village featuring restaurants, shops, and essential services.

Located just minutes from additional shopping centers, Palomar Airport, and I-5 via the prominent El Camino Real, NorthPointe West offers unmatched visibility and accessibility. Situated in Carlsbad—the gateway to North County’s thriving coastal lifestyle—this location provides proximity to top talent, scenic beaches, and vibrant communities.

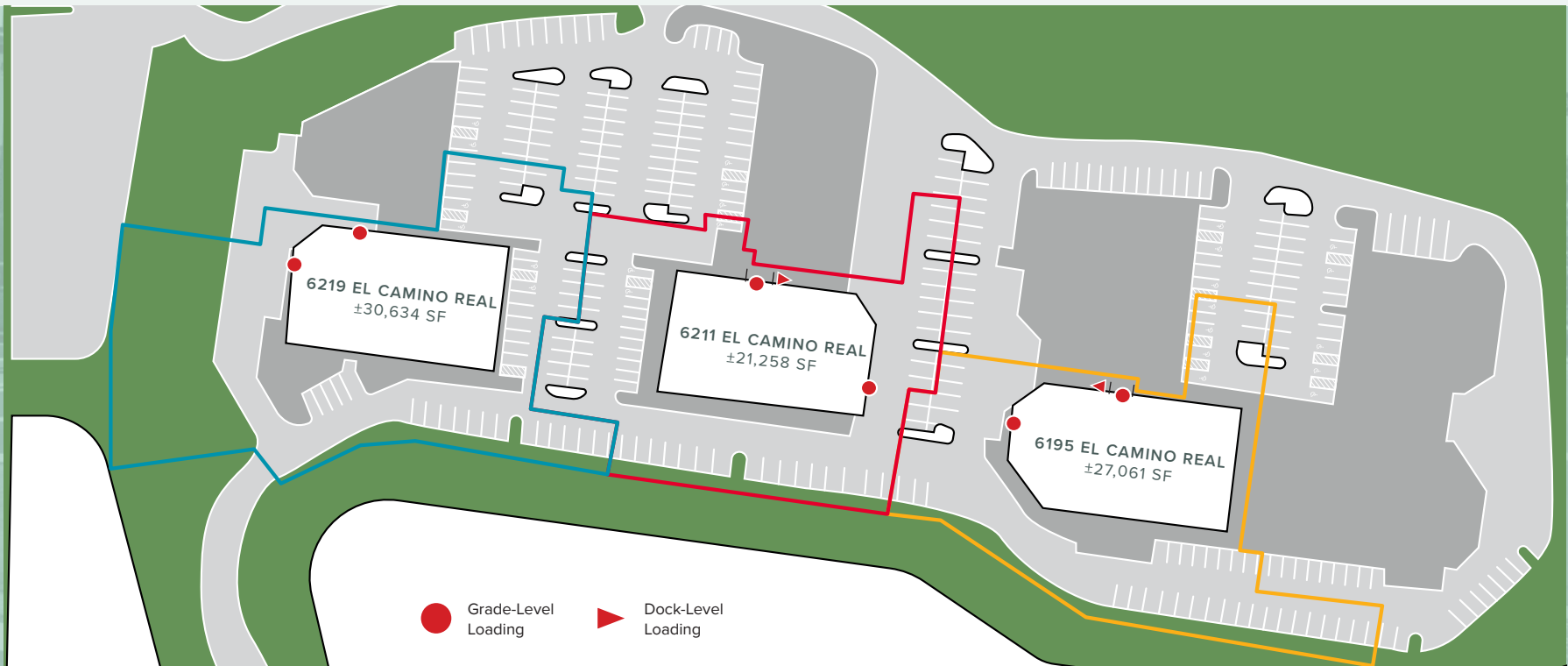


**PREMIER LIFE SCIENCE & R&D
FACILITIES IN CARLSBAD, CA**

NorthPointe West Campus Features

3 BUILDINGS AVAILABLE

ADDRESS	6219 EL CAMINO REAL	6211 EL CAMINO REAL	6195 EL CAMINO REAL
SQUARE FOOTAGE	±30,634 SF	±21,258 SF	±27,061 SF
SQUARE FOOTAGE OFFICE	±3,557 SF (12%)	±12,467 SF (59%)	±6,653 SF (25%)
CLEAR HEIGHT	±24' (13' Below Plenum)	±24'	±24'
TOTAL POWER	2,000A, 480Y 277V 3PH 4W	1,200A, 480Y 277V 3PH 4W	1,200A, 480Y 277V 3PH 4W
DOCK-HIGH LOADING	0 (Potential to Reinstate)	1 (PLATFORM)	1 (PLATFORM)
GRADE-LEVEL LOADING	2	1	1
PARKING RATIO	±1.80/1,000 (55 Spaces)	±3.39/1,000 (72 Spaces)	±2.40/1,000 (65 Spaces)



6219

EL CAMINO REAL

FLOORS 1 & 2

PROPERTY OVERVIEW [GMP COMPLIANT FACILITY]



SQUARE FEET:

±30,634

OFFICE MEZZANINE SF:

±3,557

TOTAL RENTABLE
MECHANICAL MEZZANINE SF:

±6,196

TOTAL
RENTABLE MEZZANINE SF:

±9,753

TOTAL USABLE
MECHANICAL MEZZANINE SF:

±12,393

TOTAL USABLE MEZZANINE SF:

±15,949



POWER:

2,000A, 480y 277v 3ph 4w

BACKUP GENERATOR:

**750kW [938 kVA], 480/277v
3ph 8-hour fuel tank**



CLEAR HEIGHT/ SLAB-TO-SLAB:

24' [13' Below Plenum]



LAB GRADE:

BSL 2+

CHILLERS:

- 2 chillers
- 50 tons each

CLEAN ROOMS:

- Modular

CLEAN ROOM GRADE:

- Hallways (Grade D)
- Manufacturing (Grade C)
- Fill suites (Grade B)

WATER BOILERS:

- 3 heating hot water boilers
- 1500 MBTUH each

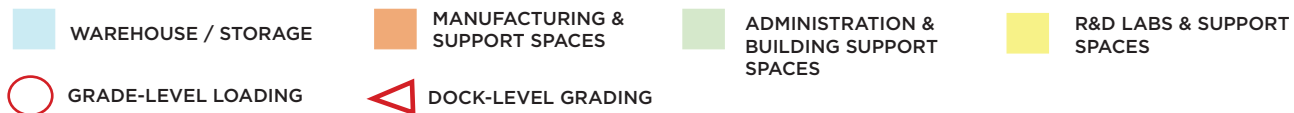
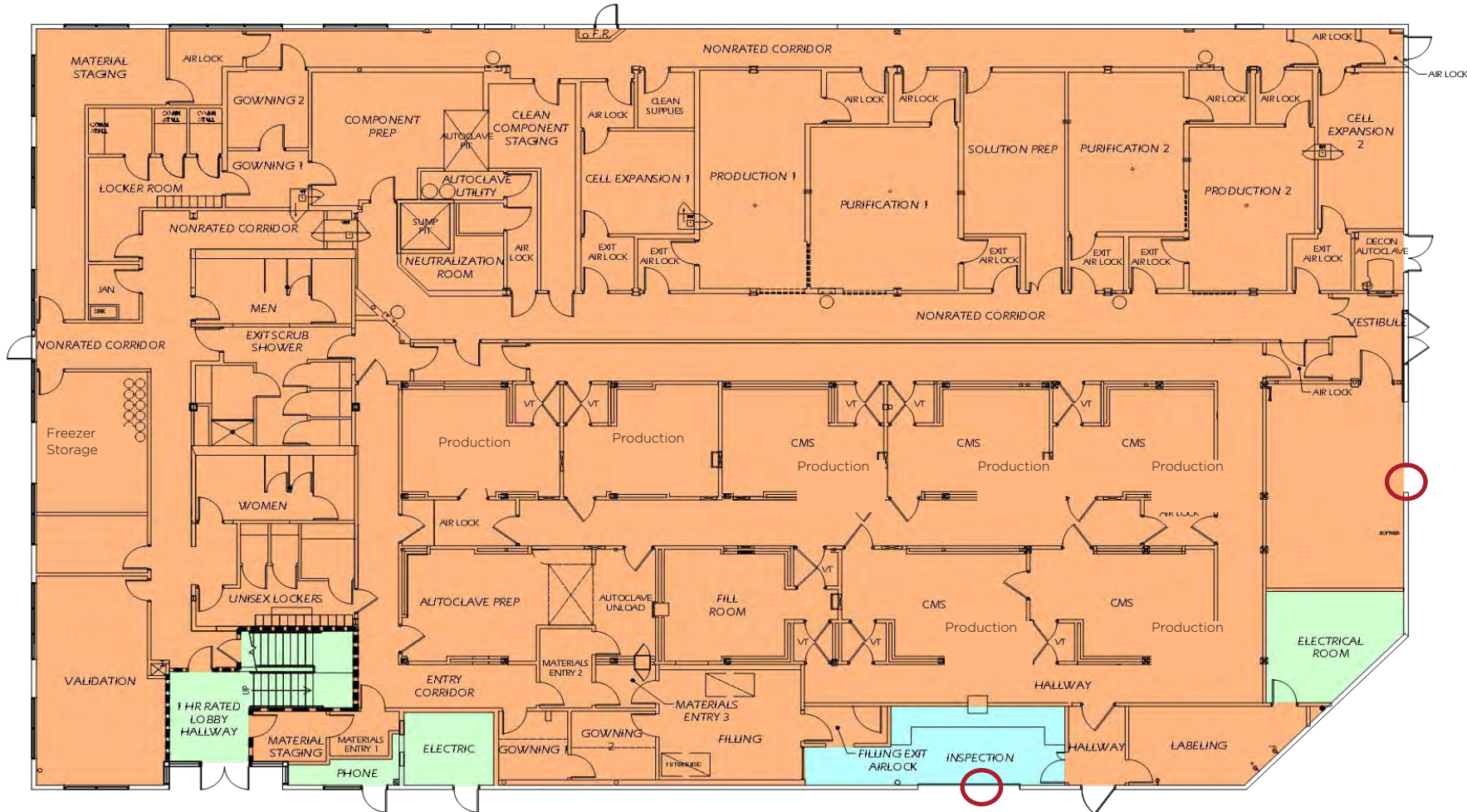
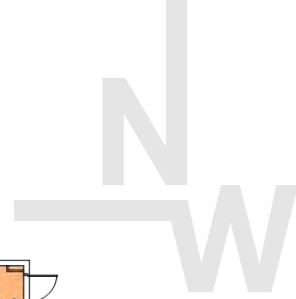
COLD ROOMS:

- (2-8) cold room

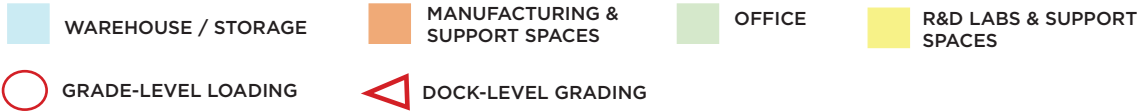
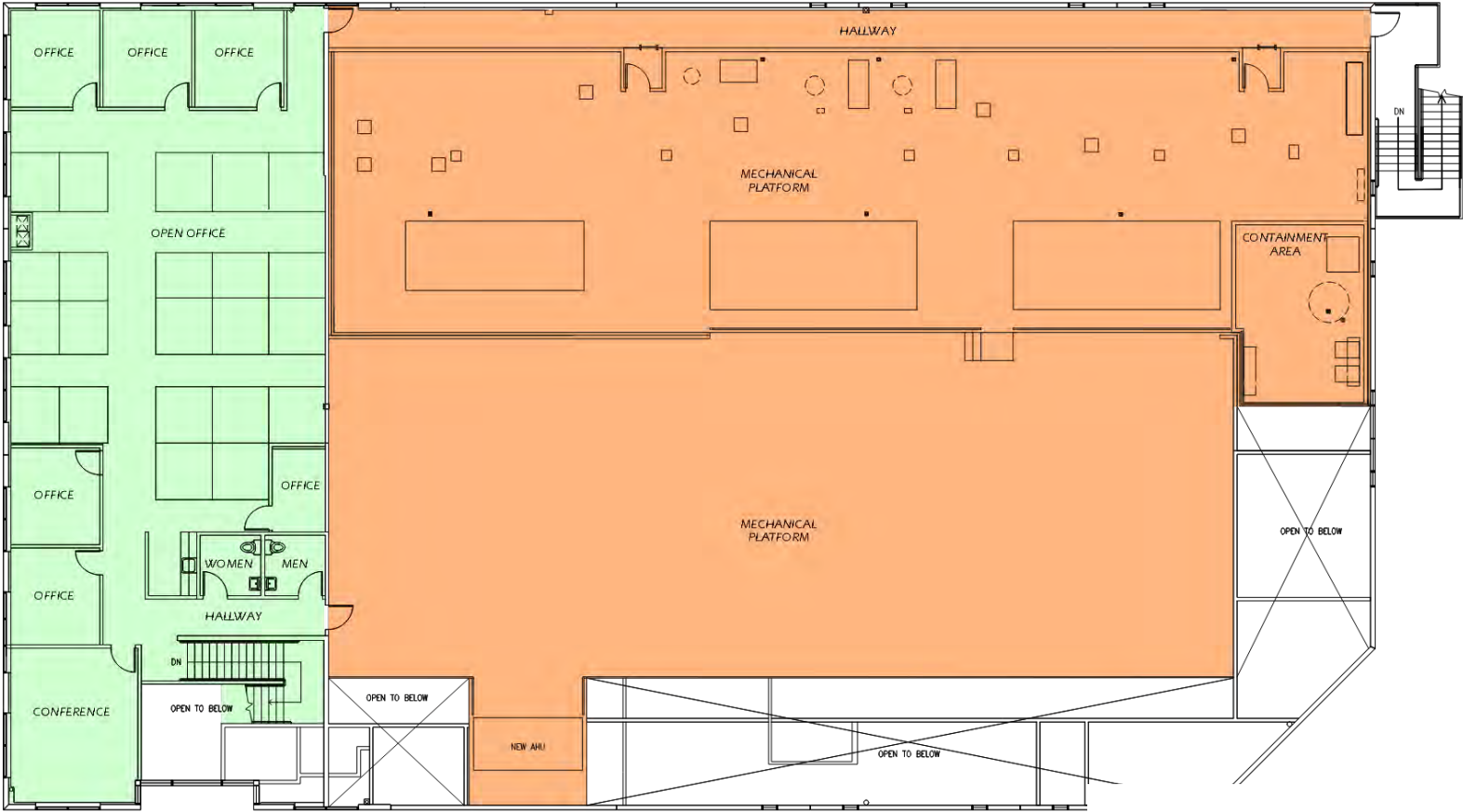
EXHAUST SYSTEMS:

- Single-pass air that goes through Bag-in Bag-out HEPA filters before going to atmosphere

6219 El Camino Real | 1st Floor



6219 El Camino Real | 2nd Floor



6211

EL CAMINO REAL

FLOORS 1 & 2

PROPERTY OVERVIEW [GMP COMPLIANT FACILITY]



SQUARE FEET:
±21,258

OFFICE MEZZANINE SF:
±4,621

MECHANICAL MEZZANINE SF:
0

TOTAL MEZZANINE SF:
±4,621



POWER:
1,200A, 480y 277v 3ph 4w

BACKUP GENERATOR:
**200kW (300 kVA), 480/277v
3ph 8-hour fuel tank**



CLEAR HEIGHT/ SLAB-TO-SLAB:
±24'/±12'



LAB GRADE:
BSL 2+

QC LAB:
**YES;
ddPCR,
qPCR,
HPLC**

CHILLERS:
• None

CLEAN ROOMS:
• None

CLEAN ROOM GRADE:
• None

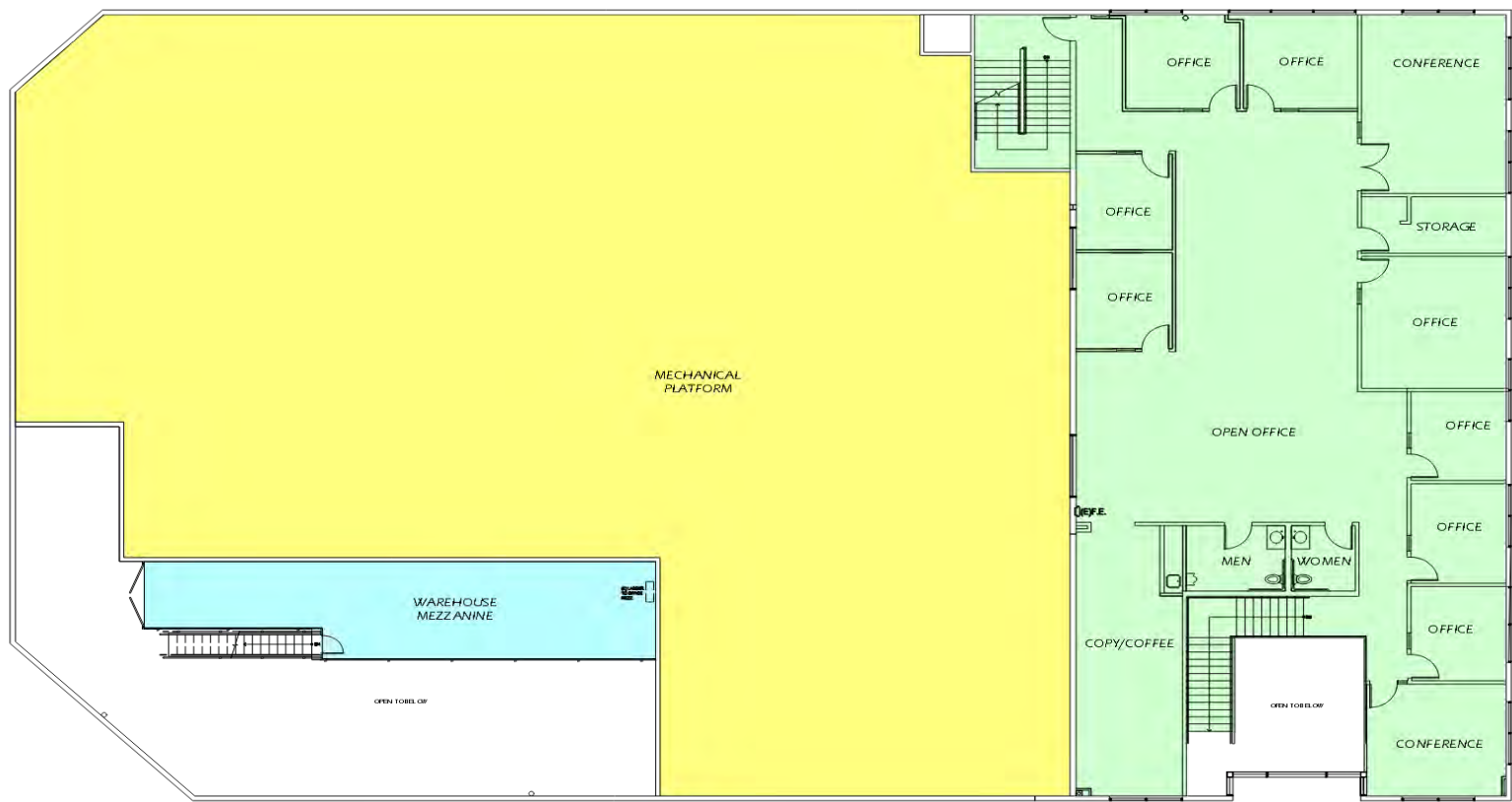
WATER BOILERS:
• 3 heating hot water boilers
• 1500 MBTUH each

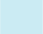



COLD ROOMS:
• (2-8) cold room

EXHAUST SYSTEMS:
• Heat pumps located on the roof



6211 El Camino Real | 2nd Floor



- | | | | |
|---|--|--|---|
|  WAREHOUSE / STORAGE |  MANUFACTURING & SUPPORT SPACES |  OFFICE |  R&D LABS & SUPPORT SPACES |
|  GRADE-LEVEL LOADING |  DOCK-LEVEL GRADING | | |

6195

EL CAMINO REAL

FLOORS 1 & 2

PROPERTY OVERVIEW [GMP COMPLIANT FACILITY]



SQUARE FEET:

±27,061

OFFICE MEZZANINE SF:

±3,855

MECHANICAL MEZZANINE SF:

±5,075

TOTAL MEZZANINE SF:

±8,930



POWER:

1,200A, 480y 277v 3ph 4w

BACKUP GENERATOR:

**500kW [63 kVA], 480/277v
3ph 8-hour fuel tank**



CLEAR HEIGHT/ SLAB-TO-SLAB:

±24'/±12'



LAB GRADE:

BSL 2+

CHILLERS:

- 2 chillers
- 50 tons each

CLEAN ROOMS:

- Modular

CLEAN ROOM GRADE:

- Hallways (Grade D)
- Manufacturing (Grade C)
- Fill suites (Grade B)

WATER BOILERS:

- 3 heating hot water boilers
- 1500 MBTUH each

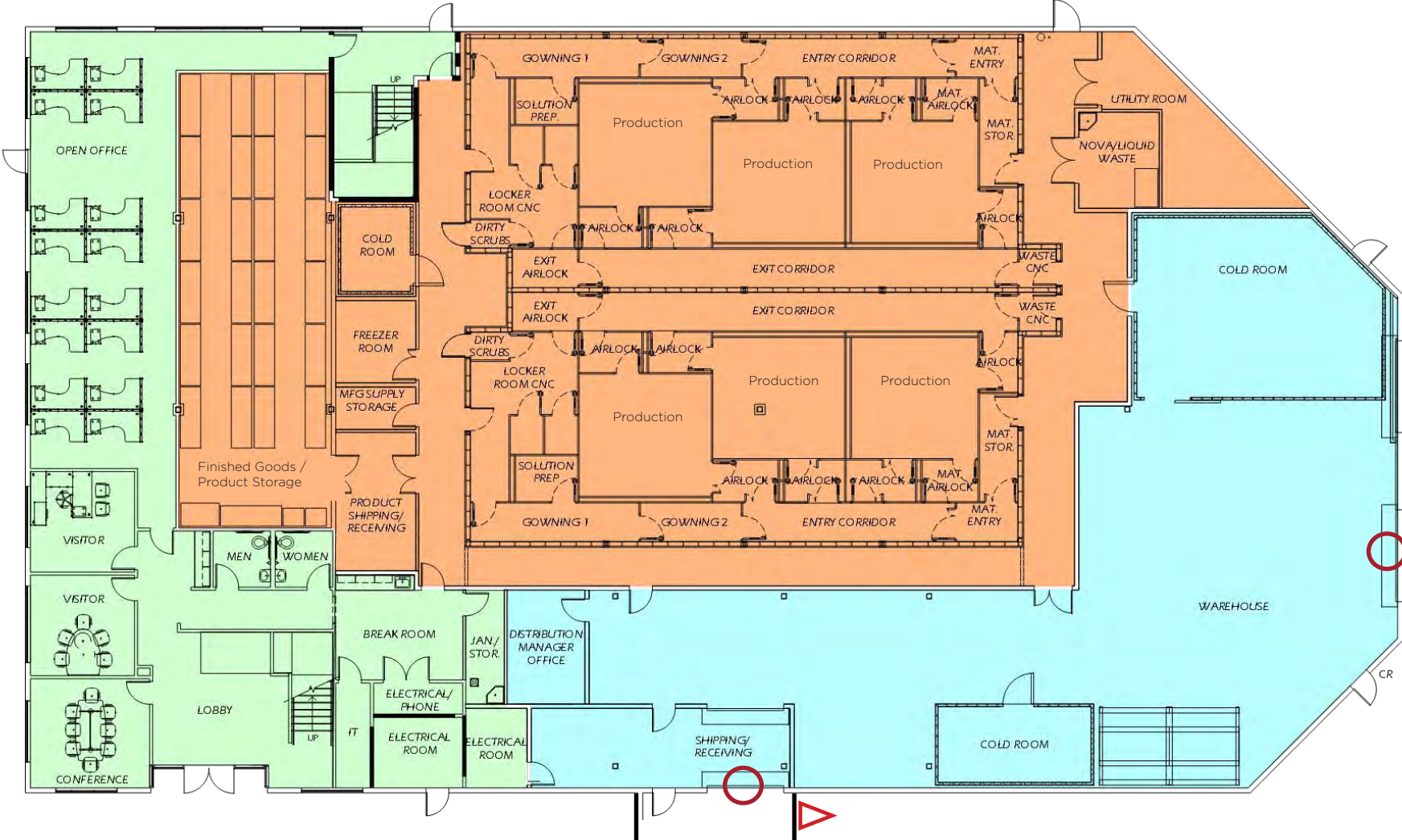
COLD ROOMS:

- (2-8) cold room

EXHAUST SYSTEMS:

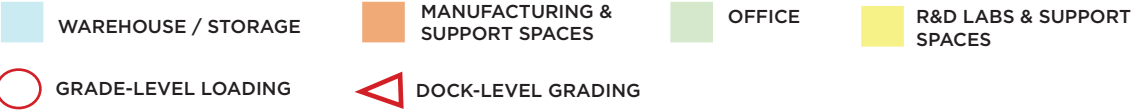
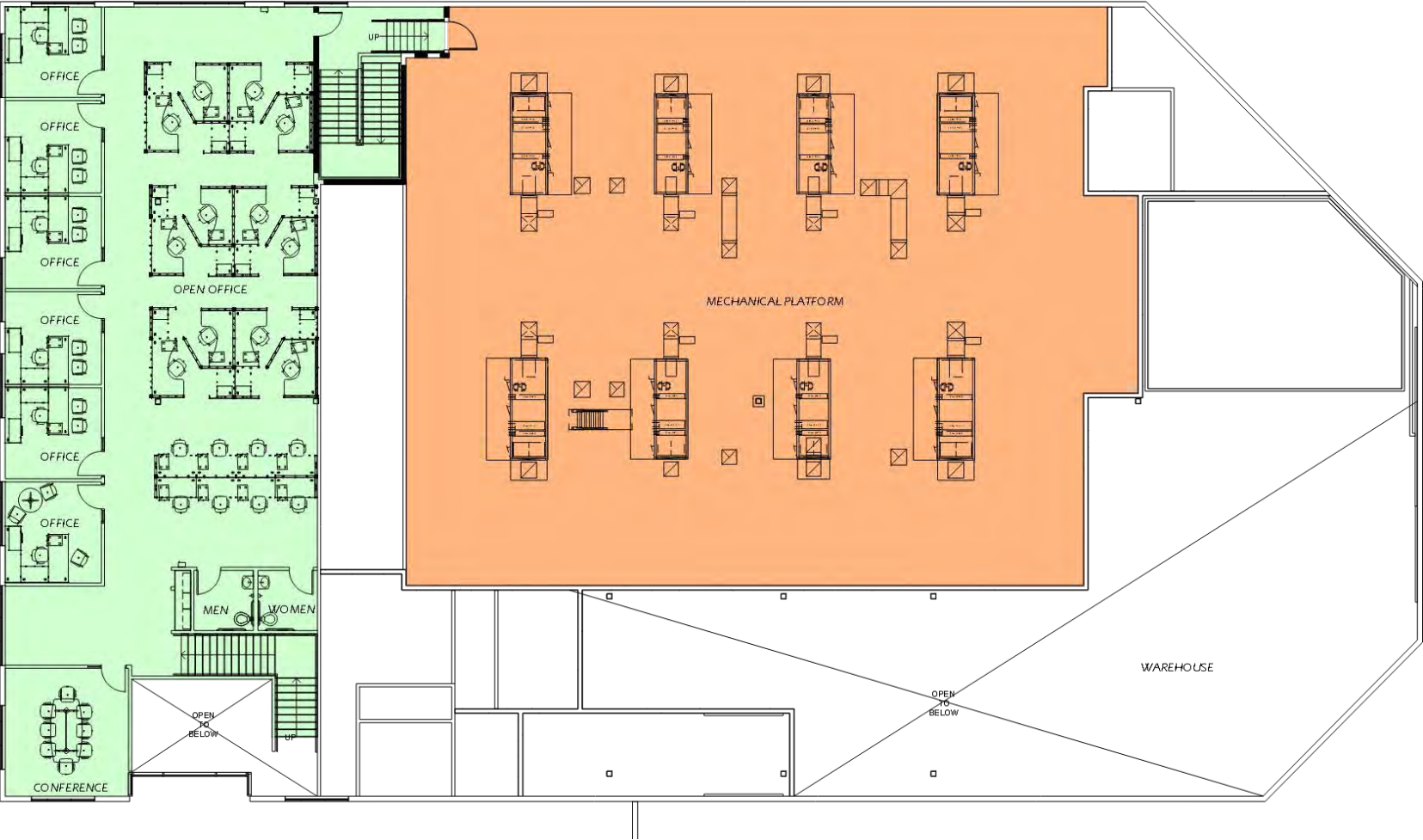
- Single-pass air that goes through Bag-in Bag-out HEPA filters before going to atmosphere

6195 El Camino Real | 1st Floor



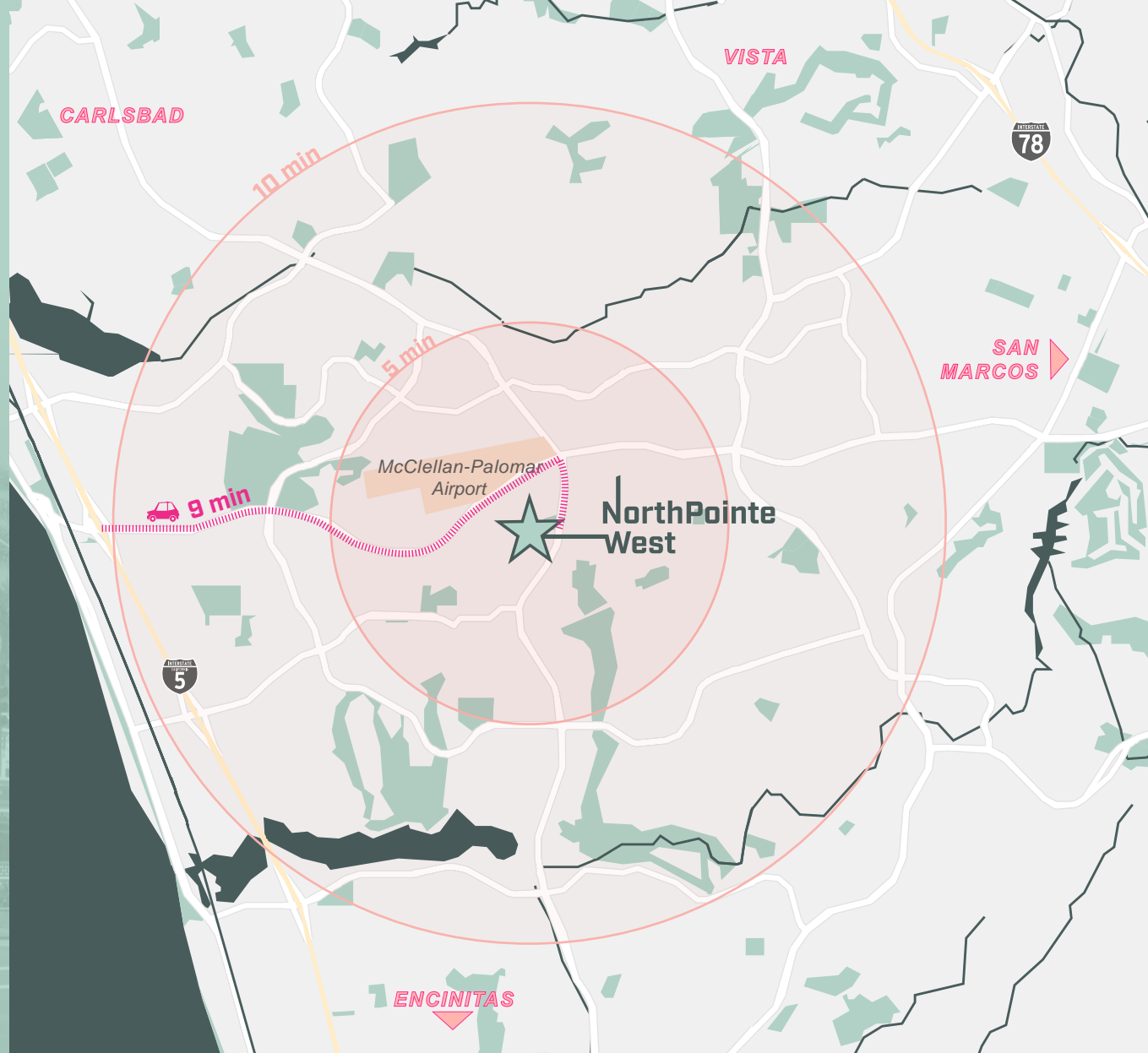
- WAREHOUSE / STORAGE
- MANUFACTURING & SUPPORT SPACES
- OFFICE
- R&D LABS & SUPPORT SPACES
- GRADE-LEVEL LOADING
- DOCK-LEVEL GRADING

6195 El Camino Real | 2nd Floor



Location & Access

NorthPointe West is centrally located in Carlsbad, North County San Diego's largest and most desirable market, and San Diego's fastest growing submarket. Carlsbad blends friendly-beach community character with North County's vibrant and diversified region that includes top companies, startups, and quickly expanding innovators.



DRIVE TIMES:

3 min

Palomar Airport

9 min

Interstate I-5

15 min

Highway 78

60 min

Orange County

120 min

Los Angeles/LAX

ENCINITAS



DOWNTOWN
CARLSBAD

NorthPointe
West



PALOMAR AIRPORT RD

EL CAMINO REAL

PALOMAR COMMONS



LIFT

Eureka! DEL LUSO

THE SQUARE



NEARBY AMENITIES



WALKABLE AMENITIES



NorthPointe West



CORPORATE NEIGHBORS



ARIC STARCK

[760] 431-4211

ARIC.STARCK@CUSHWAKE.COM

LIC #01325461

BRIAN STARCK

[858] 546-5486

BRIAN.STARCK@CUSHWAKE.COM

LIC #01504078

DREW DODDS

[760] 431-3863

DREW.DODDS@CUSHWAKE.COM

LIC #02021095



PHASE3
REAL ESTATE PARTNERS

©2025 Cushman & Wakefield. All rights reserved. The information contained in this communication is strictly confidential. This information has been obtained from sources believed to be reliable but has not been verified. NO WARRANTY OR REPRESENTATION, EXPRESS OR IMPLIED, IS MADE AS TO THE CONDITION OF THE PROPERTY (OR PROPERTIES) REFERENCED HEREIN OR AS TO THE ACCURACY OR COMPLETENESS OF THE INFORMATION CONTAINED HEREIN, AND SAME IS SUBMITTED SUBJECT TO ERRORS, OMISSIONS, CHANGE OF PRICE, RENTAL OR OTHER CONDITIONS, WITHDRAWAL WITHOUT NOTICE, AND TO ANY SPECIAL LISTING CONDITIONS IMPOSED BY THE PROPERTY OWNER(S). ANY PROJECTIONS, OPINIONS OR ESTIMATES ARE SUBJECT TO UNCERTAINTY AND DO NOT SIGNIFY CURRENT OR FUTURE PROPERTY PERFORMANCE. COE-PM-West-07.22.2025