

For Lease

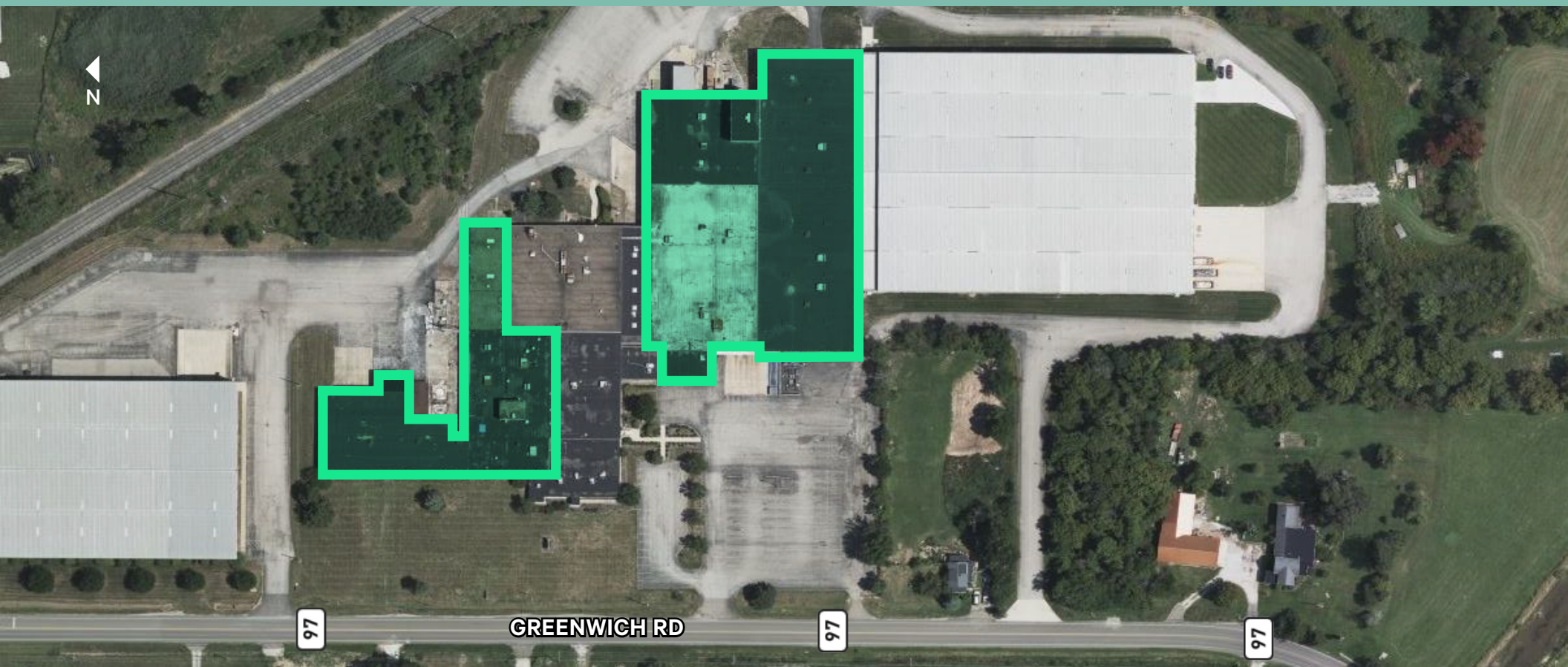
CBRE

Greenwich Industrial Park

Functional Warehouse, Manufacturing, & Shop Spaces
Heavy Power | Great Highway Access

286 W Greenwich Road
Seville, Ohio 44273

±13,000 - 106,000 SF Available



Greenwich Industrial Park

286 W Greenwich Road | Seville, Ohio 44273

For Lease

Property Highlights

- + Great Highway Access (+/- 1.4 Miles to I-76;
+/- 3 Miles to I-76 / I-71 Interchange)
- + 100% Sprinklered (Wet)
- + Heavy Power
- + Ample Parking
- + Flexible Layouts & Footprints Available
- + Professionally Owned & Managed
by Industrial Realty Group (IRG)

\$1.34 / SF

2025 Estimated Operating Expenses



UNIT	TOTAL SF	OFFICE SF	WAREHOUSE	DOCKS	DRIVE-INS	CLEAR HEIGHT	LEASE RATE
B & C	76,308 SF	6,345 SF	69,963 SF	8	2	18'7"	\$5.00 / SF NNN
B	39,100 SF	2,745 SF	36,355 SF	2	1	18'7"	\$5.00 / SF NNN
C	37,208 SF	1,200 SF	36,008 SF	5	1	18'7"	\$5.00 / SF NNN
E1 & E2	29,560 SF	1,500 SF	28,060 SF	4	–	12' – 16'	\$4.75 / SF NNN
E1	13,060 SF	–	13,060 SF	3	–	16'	\$4.75 / SF NNN
E2	16,500 SF	1,500 SF	15,000 SF	1	–	12' – 16'	\$4.75 / SF NNN

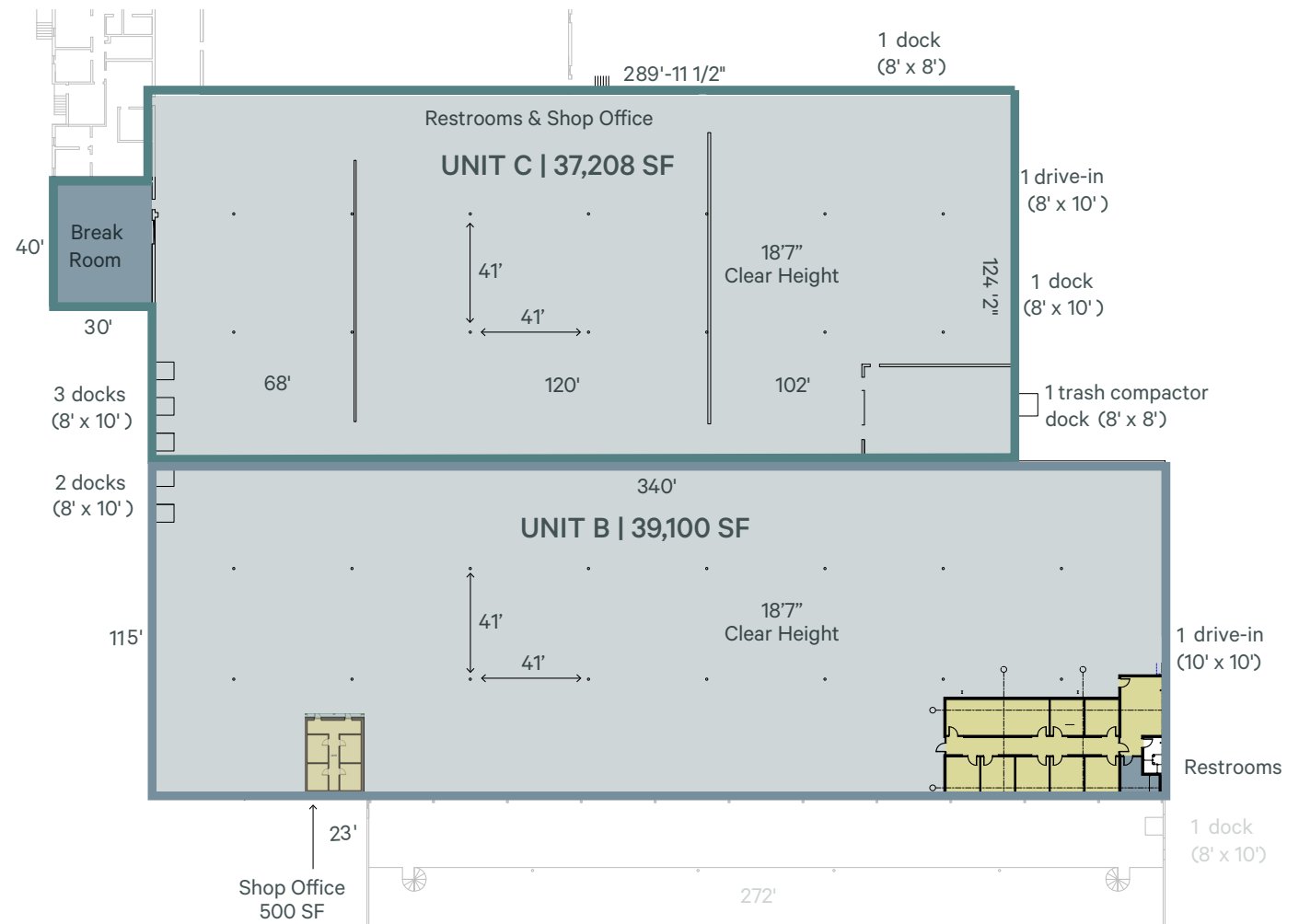
Floor Plan

Units B & C

HIGHLIGHTS

- + Updated shop office (paint, carpet, lighting)
- + Clean shop space with natural light (skylights)
- + Additional modifications can be made to-suit
- + Wet Fire Sprinklers

- Office
- Breakroom
- Warehouse

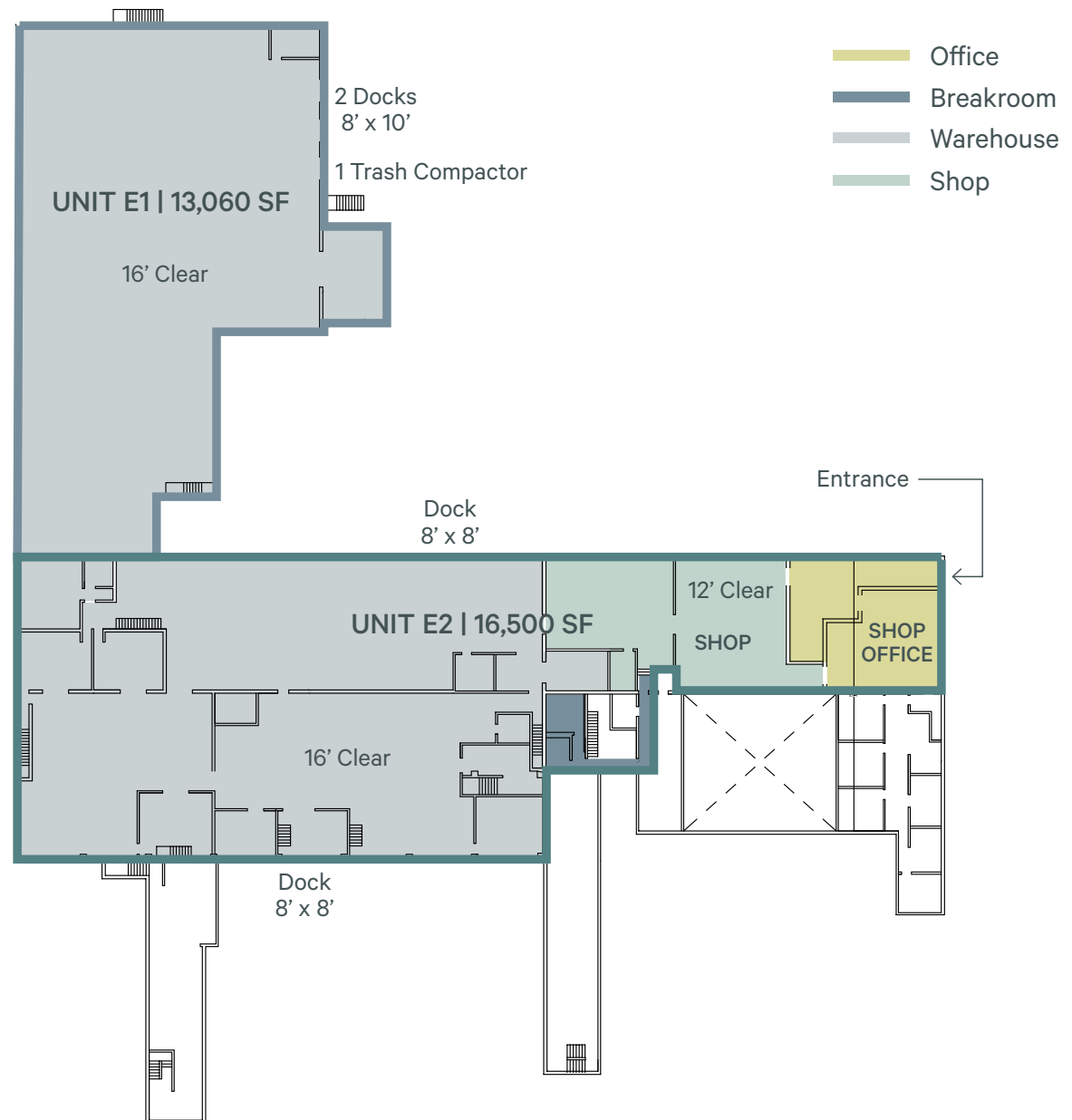


Floor Plan

Units E1 & E2

HIGHLIGHTS

- + Updated shop office (paint, carpet, lighting)
- + Clean shop space with natural light (skylights)
- + Additional modifications can be made to-suit
- + Wet Fire Sprinklers

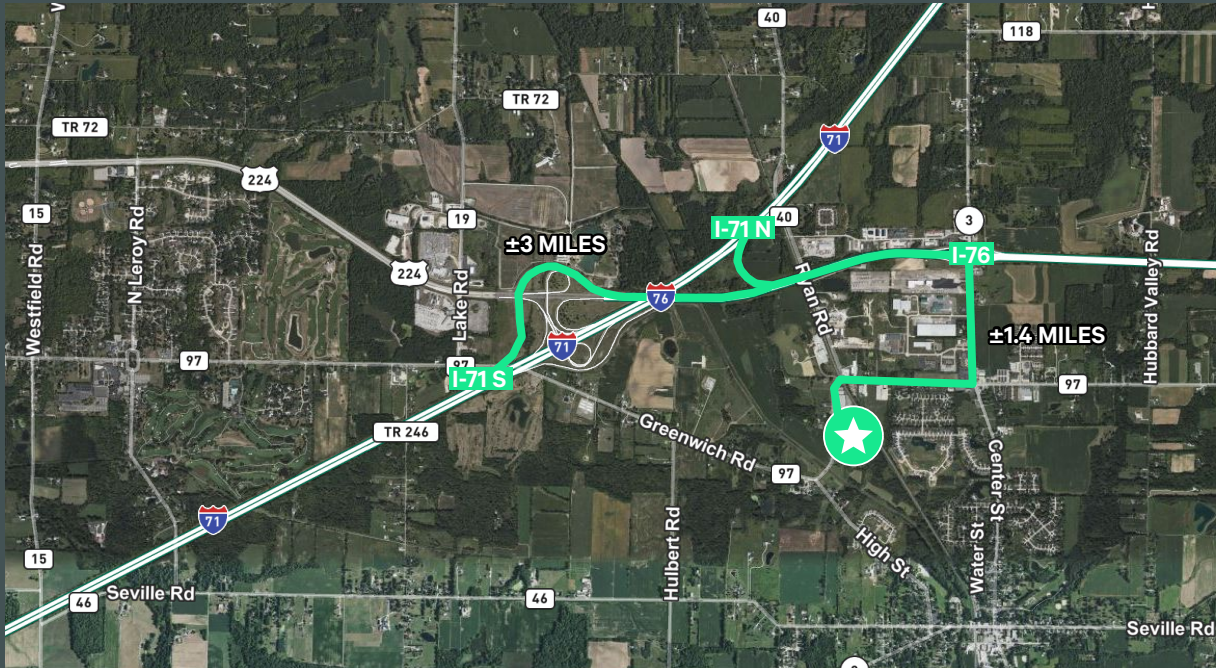


Greenwich Industrial Park

286 W Greenwich Road | Seville, Ohio 44273

For Lease

Proximity to Highways



Contact Us

Jenna Gauntner

Senior Associate
+1 216 704 4469
jenna.gauntner@cbre.com

Melissa Streicher

Senior Associate
+1 440 289 0726
melissa.streicher@cbre.com

CBRE, Inc.

950 Main Avenue
Suite 800
Cleveland, Ohio 44113

Demographics

10 MILE RADIUS



121,187
2025 Population



48,406
Employees



\$114,627
Avg. Household Income



\$329,552
Avg. Housing Value



49,133
Households

© 2025 CBRE, Inc. All rights reserved. This information has been obtained from sources believed reliable, but has not been verified for accuracy or completeness. You should conduct a careful, independent investigation of the property and verify all information. Any reliance on this information is solely at your own risk. CBRE and the CBRE logo are service marks of CBRE, Inc. All other marks displayed on this document are the property of their respective owners, and the use of such logos does not imply any affiliation with or endorsement of CBRE. Photos herein are the property of their respective owners. Use of these images without the express written consent of the owner is prohibited. Licensed Real Estate Broker.