

FOR LEASE

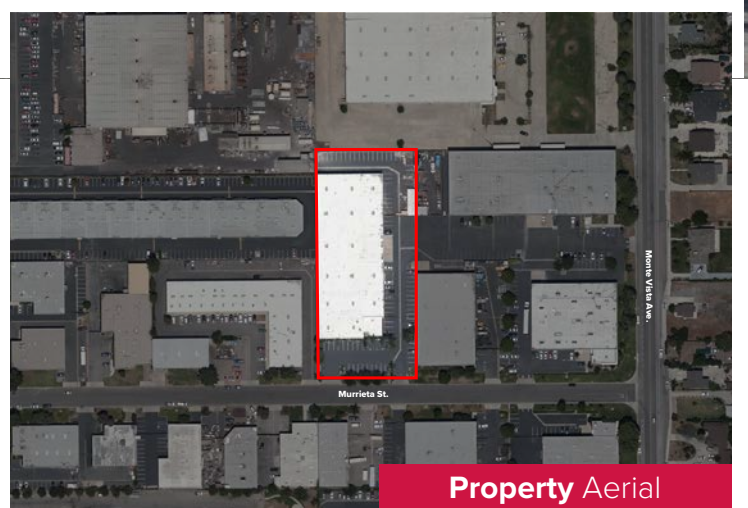
±43,428 Sq. Ft. Free Standing Building
4802 Murrieta St. Chino, CA 91710

LEE & ASSOCIATES
COMMERCIAL REAL ESTATE SERVICES



Property Highlights

- Freestanding Building
- Fenced Yard / T5 Warehouse Lighting
- Four (4) Dock High Doors w/EOD Levelers
- Four (4) Ground Level Doors
- ±4,650 SF Office Space Plus 700 SF Lab



Property Aerial



Location Map

LOCAL EXPERTISE. INTERNATIONAL REACH. WORLD CLASS.

Simon Chen, SIOR, CCIM
Senior Vice President | Lic ID # 019295748
P 562.568.2013
E schen@lee-associates.com

Michael Lee, MBA, CCIM, SIOR
Senior Vice President | Lic ID # 01703179
P 562.568.2018
E mlee@lee-associates.com

LEE & ASSOCIATES
COMMERCIAL REAL ESTATE SERVICES



Lee & Associates - Industry | Corp # 01125429
13181 Crossroads Pkwy, N. Ste 300, Industry, CA 91746
P 562.699.7500

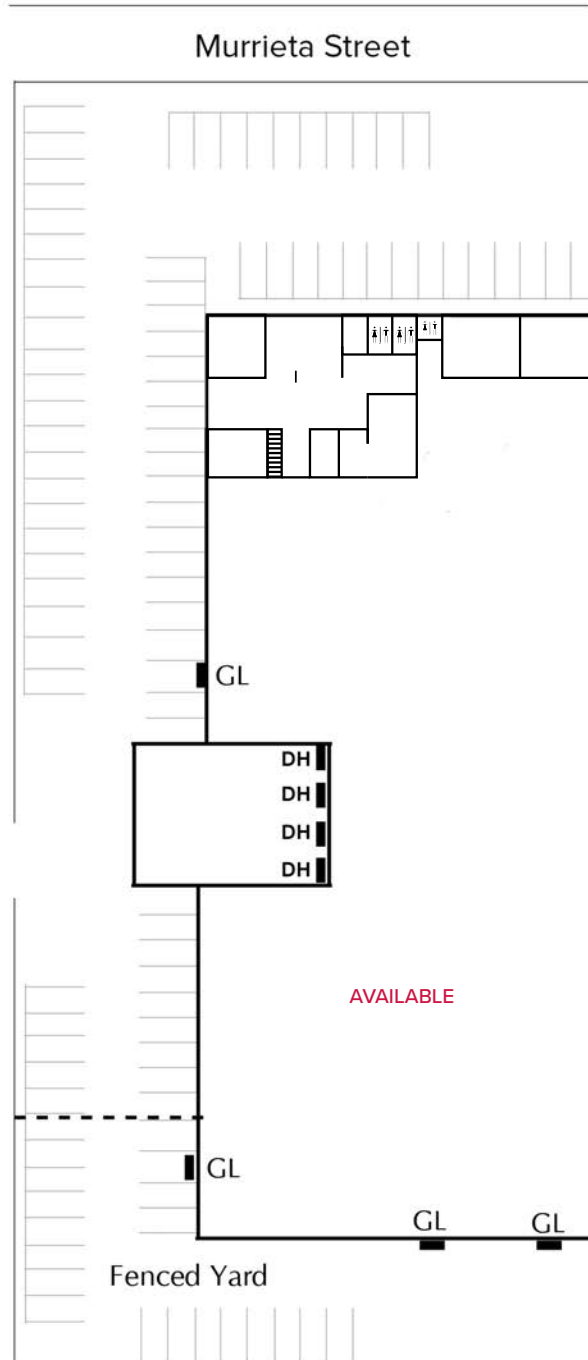
The information contained herein is obtained from sources believed to be reliable. However, we have not verified it and make no guarantees, warranties or representations as to the completeness or accuracy thereof. The presentation of this property is used for example and is submitted subject to errors, omissions, change of price or conditions, and is subject to prior sale, lease or withdrawal without notice.

FOR LEASE

±43,428 Sq. Ft. Free Standing Building
4802 Murrieta St. Chino, CA 91710

Site Plan

- Not to Scale / Not Exact



LOCAL EXPERTISE. INTERNATIONAL REACH. WORLD CLASS.

Simon Chen, SIOR, CCIM
Senior Vice President | Lic ID # 019295748
P 562.568.2013
E schen@lee-associates.com

Michael Lee, MBA, CCIM, SIOR
Senior Vice President | Lic ID # 01703179
P 562.568.2018
E mlee@lee-associates.com

LEE & ASSOCIATES
COMMERCIAL REAL ESTATE SERVICES



FOR LEASE

±43,428 Sq. Ft. Free Standing Building
4802 Murrieta St. Chino, CA 91710

LEE & ASSOCIATES
COMMERCIAL REAL ESTATE SERVICES

Property Photos



LOCAL EXPERTISE. INTERNATIONAL REACH. WORLD CLASS.

Simon Chen, SIOR, CCIM
Senior Vice President | Lic ID # 019295748
P 562.568.2013
E schen@lee-associates.com

Michael Lee, MBA, CCIM, SIOR
Senior Vice President | Lic ID # 01703179
P 562.568.2018
E mlee@lee-associates.com

LEE & ASSOCIATES
COMMERCIAL REAL ESTATE SERVICES



Lee & Associates - Industry | Corp # 01125429
13181 Crossroads Pkwy, N. Ste 300, Industry, CA 91746
P 562.699.7500

The information contained herein is obtained from sources believed to be reliable. However, we have not verified it and make no guarantees, warranties or representations as to the completeness or accuracy thereof. The presentation of this property is used for example and is submitted subject to errors, omissions, change of price or conditions, and is subject to prior sale, lease or withdrawal without notice.