



1950

OXFORD STREET
BERKELEY, CALIFORNIA

**RETAIL OPPORTUNITY
ACROSS FROM
UC BERKELEY CAMPUS**

HELLEN DILLER ANCHOR HOUSE

maven
RETAIL



vintage cafe

HELEN DILLER ANCHOR HOUSE



STATE OF THE ART DEVELOPMENT

Located at the corner of University Avenue and Oxford Street, Hellen Diller Anchor House is a transformative project that will set a new standard for student residential living and help transfer students to thrive academically, socially, and culturally. The net income generated by the property will fund scholarships for undergraduates from underrepresented populations and first-generation college students.

The certified LEED Gold building includes 244 apartments with individual bedrooms for 772 students, a rooftop garden, a culinary classroom, a gym, and well-designed retail spaces. Situated in the perimeter of the UC Berkeley campus and only 3 blocks from the Berkeley BART station, Anchor House adds much needed housing to the UC Berkeley student body, where a significant percentage of students are challenged to live on or near campus. Anchor House is currently in the construction phase, and retail spaces are expected to be delivered midyear 2023.

The design of Anchor House seeks to set a higher standard for student residential living. The project team is composed of award-winning design firms, including lead design architects Morris Adjmi Architects, locally based architects BDE, Brand Bureau/AvroKO for experience and interior design, and Andrea Cochran Landscape Architecture for the landscape design.

1950

OXFORD STREET

• SAN RAFAEL

• MILL VALLEY



• BERKELEY

• SAUSALITO

• DOWNTOWN OAKLAND

• SAN FRANCISCO

• ALAMEDA



OAKLAND



SFO

• SAN JOSE



The Anchor House features some of the best new retail space in Berkeley and sits at the base of a 776-bed student housing project that supports the retail. Anchored by the Cal Bookstore, these well-designed side-by-side spaces can be delivered in a warm shell condition and potentially with restaurant infrastructure.

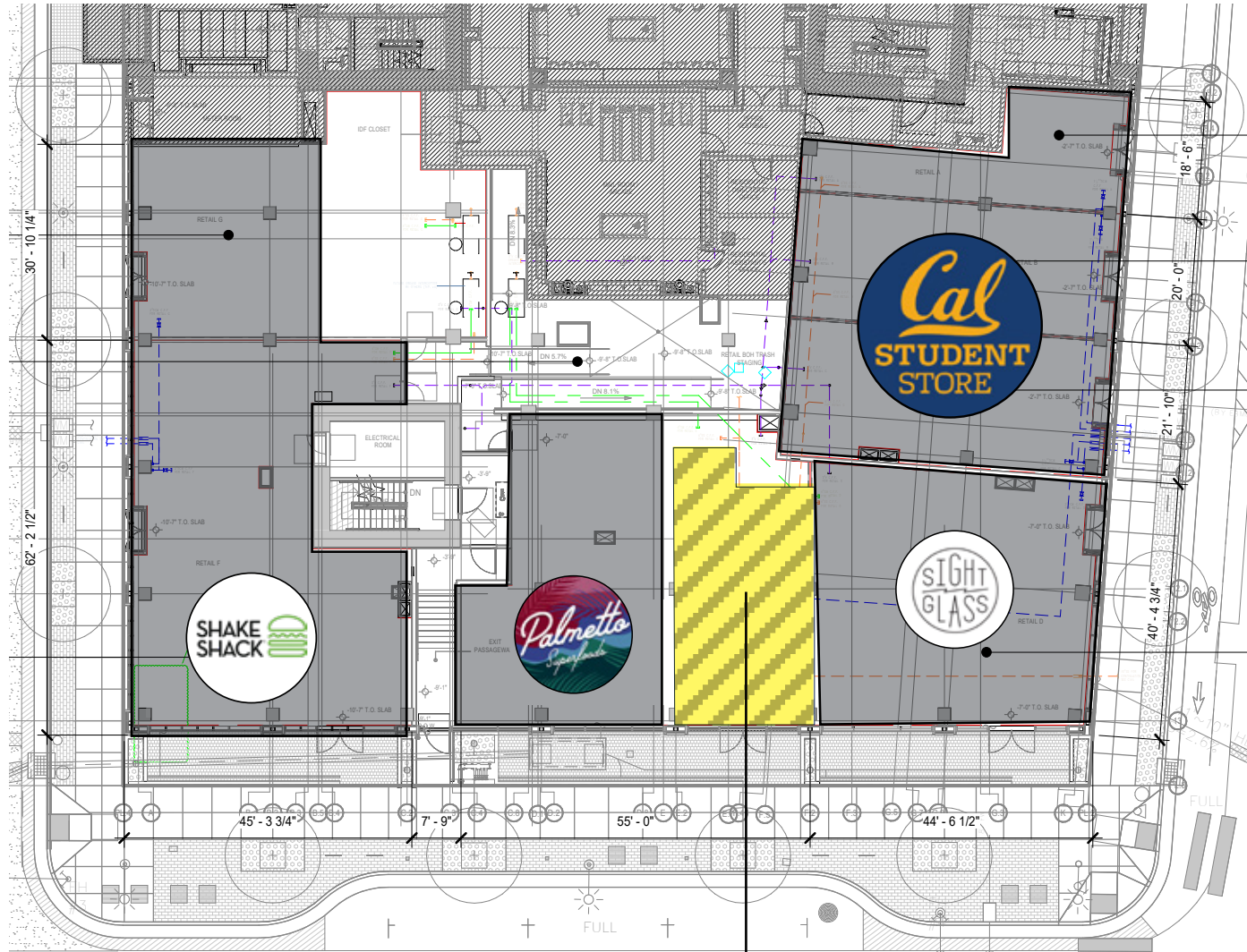


RETAIL OPPORTUNITY

- +/- 955 SF
- 20-25 foot ceilings
- Anchored by the Cal Bookstore
- Signed leases with local favorites Palmetto Super Foods
- Palmetto Superfoods is a restaurant concept designed around authentic and nutritious foods, extensive customization, and top-of-the-line service. They have made their name serving signature Brazilian açai, but also offer a variety of different bases and quality ingredients to personalize customers bowl or smoothie.
- 2,200 SF rooftop vegetable garden can compliment a grocery or restaurant use
- Can be delivered with restaurant infrastructure
- 2 tandem parking spaces per retail space
- The project promotes environmental stewardship and financial sustainability
- Situated at the base of a 776-bed student housing project

WALNUT AVENUE

OXFORD STREET

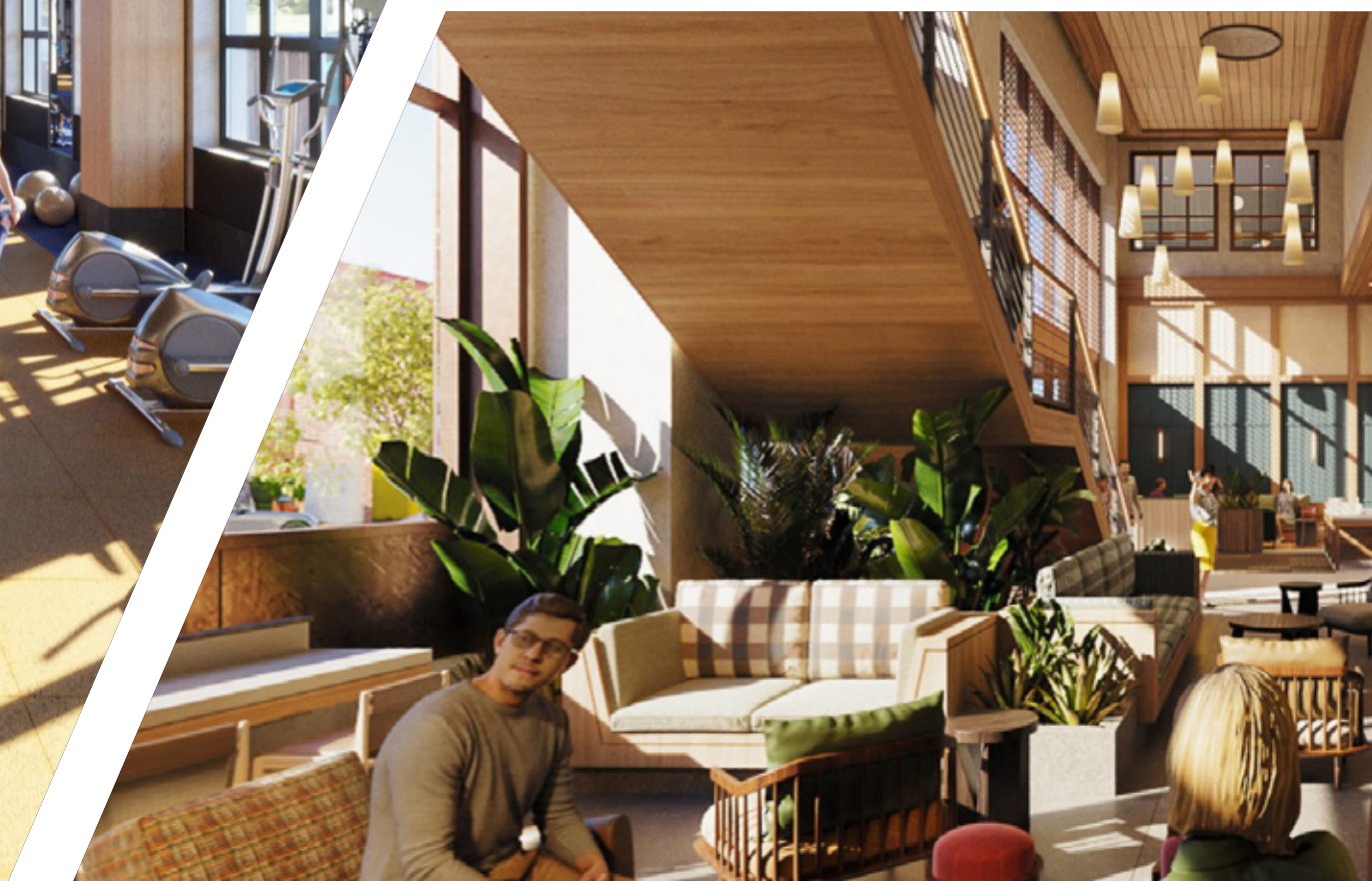


UNIVERSITY AVENUE

+/- 955 SF

NEIGHBORHOOD







PROJECT COMPONENTS

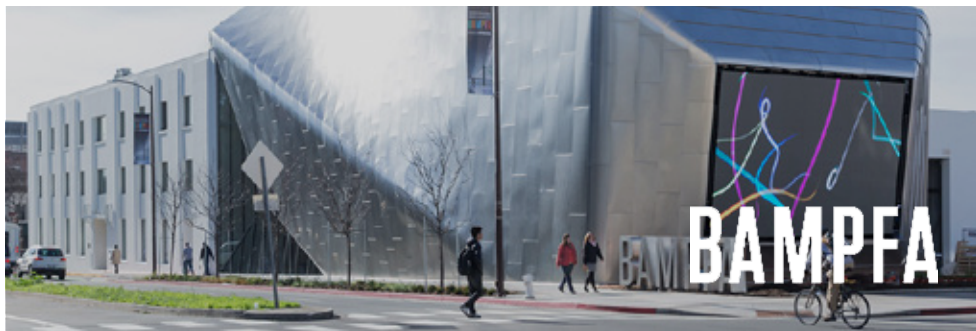
- 776-bed student housing project
- Groundfloor community-serving commercial and retail spaces
- Culinary classroom for the Rausser College of Natural Resources
- Event venues, dining spaces, and public spaces open to the community
- Maker's space run by the Berkeley Art Studio with classes for students and the community
- 7,100 SF student gym
- 2,100 SF rooftop vegetable garden





**COME JOIN US
IN BERKELEY.**





KEY FACTS

BERKELEY | CALIFORNIA



\$71,416
MEDIAN HOUSEHOLD
INCOME



3,115
TOTAL BUSINESSES



66,191
TOTAL EMPLOYEES



85.3%
WHITE COLLAR
POPULATION



80% OF RESIDENTS POSSESS BACHELOR'S/
GRAD/OR POST-GRAD DEGREE



1950 Oxford Street

BERKELEY | CALIFORNIA

maven
RETAIL

Contacts

.....

CATHERINE MEUNIER

office 415.806.5566

catherine@mavenproperties.com

DRE #01843732

PAMELA MENDELSON

office 415.404.6650

pam@mavenproperties.com

DRE #00953050

HALLIE FORMAN

office 415.426.7808

hallie@mavenproperties.com

DRE #02252563

NOTICE: This information has been secured from sources we believe to be reliable but we make no representations, warranties, express or implied, as to the accuracy of the information. Listing broker has been given enough information to provide only a preliminary interest in the property. The materials are not to be considered fact. The information contained herein is not a substitute for thorough due diligence investigation. References to square footage, zoning, use, or age are approximate. Please contact the San Francisco Planning Department to verify zoning at (415) 558-6378, as neither broker or landlord represent that this space is suitable for your use. Tenant or Buyer must verify the information at their own expense and bears all the risk for any inaccuracies. By receiving these materials you are agreeing to the disclaimers set forth herein. DRE#01878802

466 Green Street Suite #203 | San Francisco, CA 94133
415-781-7700 | www.mavenproperties.com