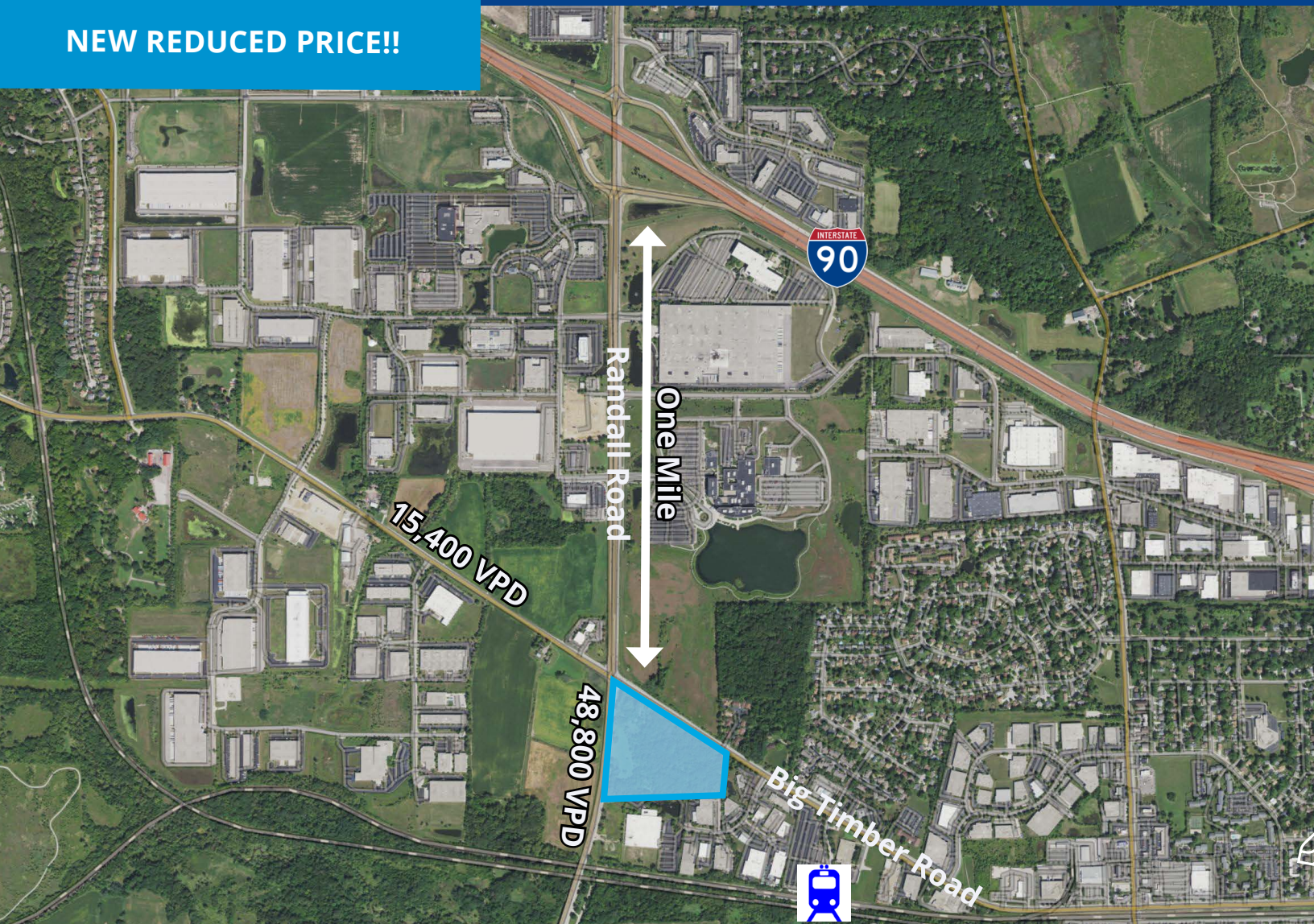


20.25 Acres - For Sale

Randall Road & Big Timber Road, Elgin, IL

NEW REDUCED PRICE!!



Property Overview

- Excellent visibility at corner of Randall Road and Big Timber Road
- 1 mile south of four-way interchange at I-90 and Randall Road
- Unincorporated Kane County
- Zoned Agriculture
- Property is included in Elgin comprehensive plan for various uses
- Metra commuter train station nearby
- Asking Price: \$3,300,000 **\$2,700,000**

20.25 Acres - For Sale

Proposed Facility

