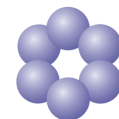


OFFICE SPACE FOR LEASE

6625 DANIEL BURNHAM DR | SUITE C
PORTAGE, IN



HOLLADAY
PROPERTIES



AMERIPLEX
AT THE PORT



ABOUT THE PROPERTY

- Located within a 385-acre Master Planned Business Park
- High-Speed, High Capacity Fiber Optic Telecom Services
- City Provided Utilities
- Numerous Financial Incentives
- On-Site Amenities: Hotels, Restaurants, Shopping, Trails
- Easy Access off I-94
- 30 Miles to Downtown Chicago



CONTACT US

219-764-3104

Michael C. O'Connor, SVP-Leasing & Development
moconnore@holladayproperties.com
6370 AmeriPlex Drive, Suite 110 Portage, IN 46368
holladayproperties.com

OFFICE SPACE FOR LEASE

6625 DANIEL BURNHAM DR | SUITE C
PORTAGE, IN



BUILDING SPECIFICATIONS

- Available Space:
 - Suite C - 4,640 SF of Finished Office Space
 - 2 Private Offices, Conference Room, Break Room
- Ceiling Height: 24' Clear
- Construction: Precast Insulated Core Panel; EPDM Roof
- Floor: 6" Reinforced Concrete Slab
- Car Parking: 105 Auto Spaces, Trailer Spaces Available
- Lighting: 400 Watt Metal Halide
- Fire Protection: Wet Pipe, ESFR Sprinkler System
- Power: 200A, 480/277v, 3 Phase Wire Per Suite



CONTACT US

219-764-3104

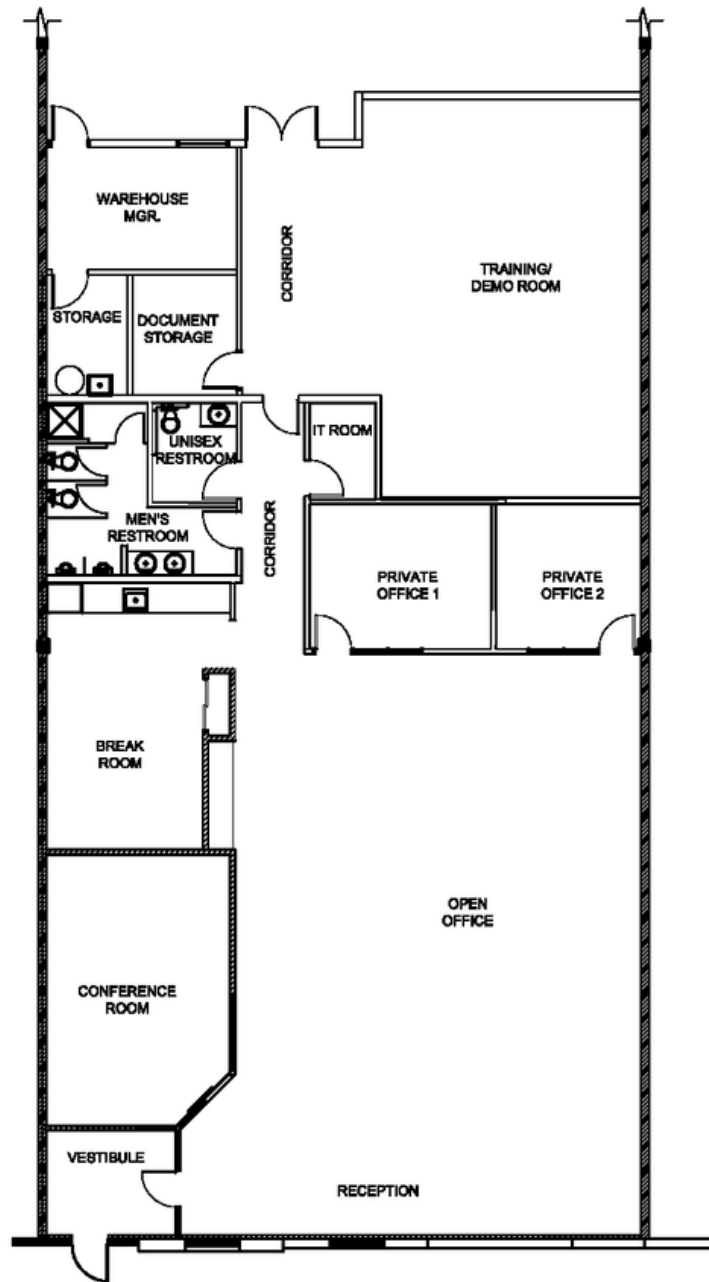
Michael C. O'Connor, SVP-Leasing & Development
moconnore@holladayproperties.com
6370 Ameriplex Drive, Suite 110 Portage, IN 46368
holladayproperties.com

OFFICE SPACE FOR LEASE

6625 DANIEL BURNHAM DR | SUITE C
PORTAGE, IN



SPACE PLAN



CONTACT US

219-764-3104

Michael C. O'Connor, SVP-Leasing & Development
moconnore@holladayproperties.com

6370 AmeriPlex Drive, Suite 110 Portage, IN 46368
holladayproperties.com